

80 EXCHANGE STREET
 PORTLAND, MAINE
 OFFICE RENOVATION



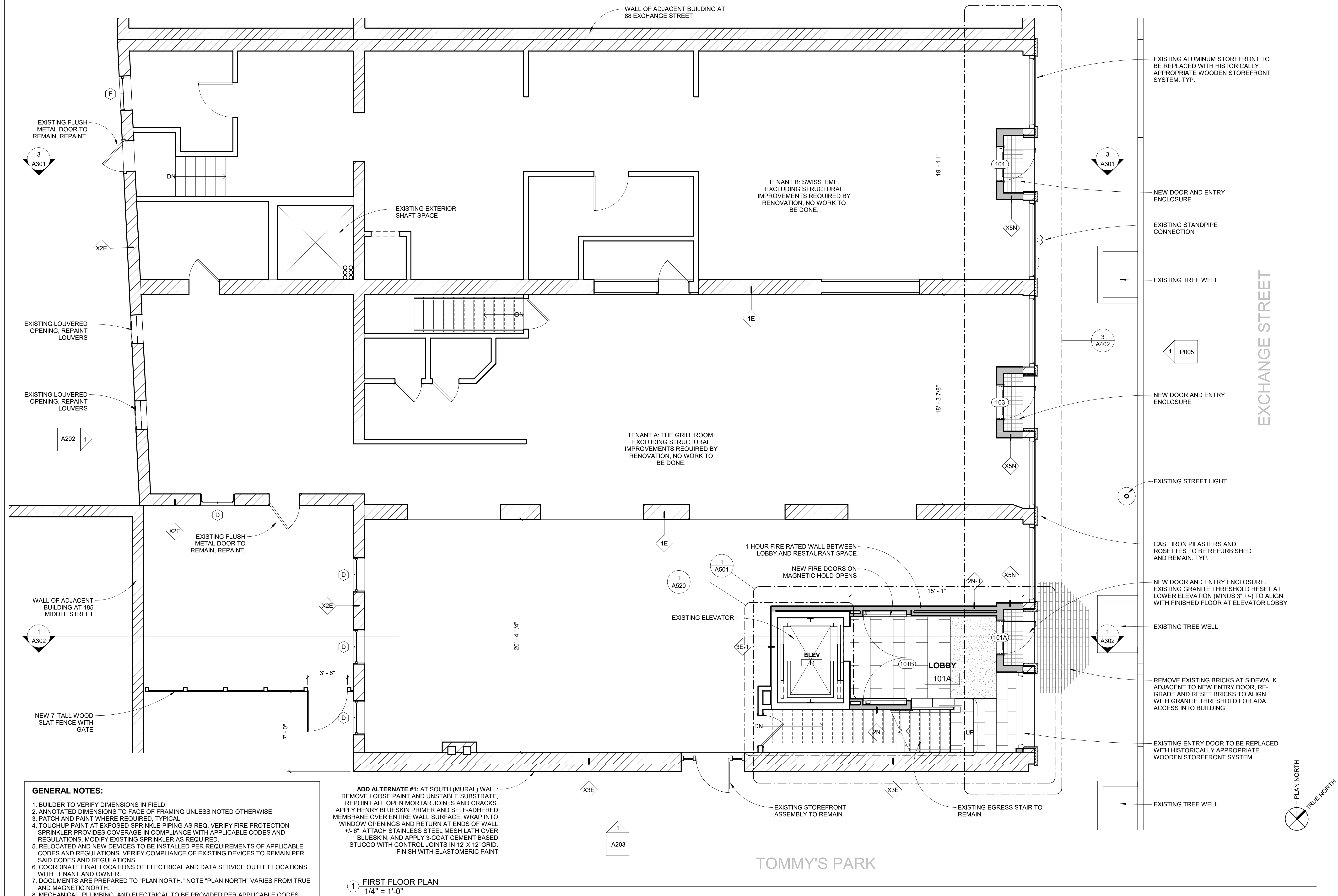
CONSULTANTS:

No.	Name	Date
1	REV 1	1/5/18

ISSUED FOR PERMITTING

ISSUED: 11/01/17
 PROJECT No: 1714
 DRAWN BY: RIP
 CHECKED BY: CMB
 SHEET TITLE:
 FIRST FLOOR PLAN

A101



- GENERAL NOTES:**
- BUILDER TO VERIFY DIMENSIONS IN FIELD.
 - ANNOTATED DIMENSIONS TO FACE OF FRAMING UNLESS NOTED OTHERWISE.
 - PATCH AND PAINT WHERE REQUIRED, TYPICAL.
 - TOUCHUP PAINT AT EXPOSED SPRINKLER PIPING AS REQ. VERIFY FIRE PROTECTION SPRINKLER PROVIDES COVERAGE IN COMPLIANCE WITH APPLICABLE CODES AND REGULATIONS. MODIFY EXISTING SPRINKLER AS REQUIRED.
 - RELOCATED AND NEW DEVICES TO BE INSTALLED PER REQUIREMENTS OF APPLICABLE CODES AND REGULATIONS. VERIFY COMPLIANCE OF EXISTING DEVICES TO REMAIN PER SAID CODES AND REGULATIONS.
 - COORDINATE FINAL LOCATIONS OF ELECTRICAL AND DATA SERVICE OUTLET LOCATIONS WITH TENANT AND OWNER.
 - DOCUMENTS ARE PREPARED TO "PLAN NORTH." NOTE "PLAN NORTH" VARIES FROM TRUE AND MAGNETIC NORTH.
 - MECHANICAL, PLUMBING, AND ELECTRICAL TO BE PROVIDED PER APPLICABLE CODES. CONTRACTOR IS TO SEEK APPLICABLE PLUMBING AND ELECTRICAL PERMITS AS REQUIRED BY AUTHORITIES HAVING JURISDICTION.
 - RELOCATED SPRINKLER HEADS AND DEVICES SHALL BE CENTERED WITHIN ACT PANEL WHEREVER POSSIBLE.
 - PREP, PATCH, AND PAINT EXISTING SURFACES TO REMAIN AND THOSE TO INDICATE TO RECEIVE PAINT.
 - SEAL PENETRATIONS BETWEEN LEVELS AND INTO RATED ENCLOSURES (INCLUDING STAIRS) AS REQ.

ADD ALTERNATE #1: AT SOUTH (MURAL) WALL:
 REMOVE LOOSE PAINT AND UNSTABLE SUBSTRATE. REPOINT ALL OPEN MORTAR JOINTS AND CRACKS. APPLY HENRY BLUESKIN PRIMER AND SELF-ADHERED MEMBRANE OVER ENTIRE WALL SURFACE. WRAP INTO WINDOW OPENINGS AND RETURN AT ENDS OF WALL +/- 6". ATTACH STAINLESS STEEL MESH LATH OVER BLUESKIN, AND APPLY 3-COAT CEMENT BASED STUCCO WITH CONTROL JOINTS IN 12' X 12' GRID. FINISH WITH ELASTOMERIC PAINT

1 FIRST FLOOR PLAN
 1/4" = 1'-0"