

80 EXCHANGE STREET
 PORTLAND, MAINE
 OFFICE RENOVATION



CONSULTANTS:

REVISIONS:

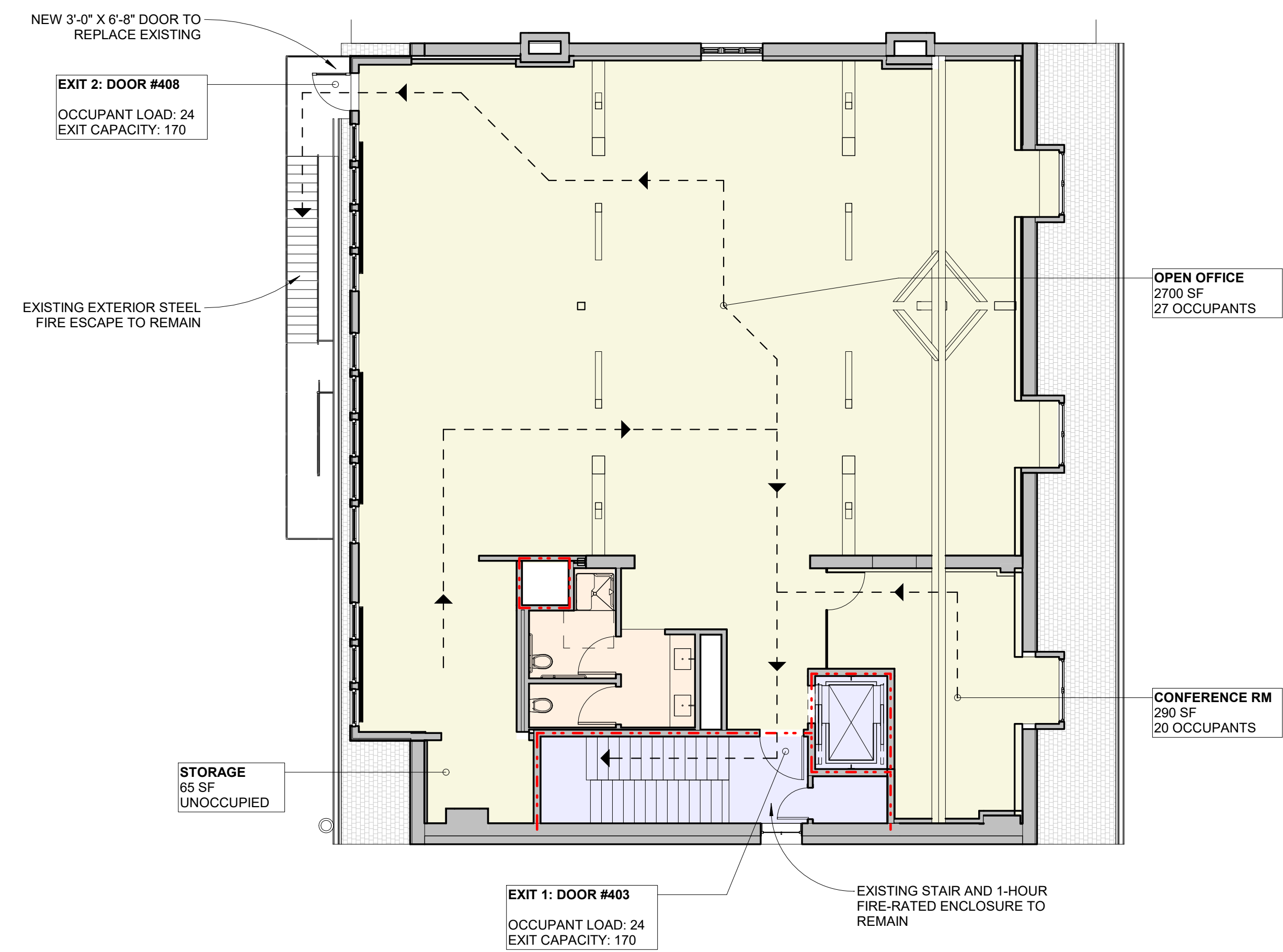
No.	Name	Date
1	REV 1	1/5/18

ISSUED FOR PERMITTING

ISSUED: 11/01/17
 PROJECT No: 1714
 DRAWN BY: RIP
 CHECKED BY:
 SHEET TITLE:
 CODE REVIEW & EGRESS PLANS

A002

FOURTH FLOOR TOTAL OCCUPANTS: 47
 MAX TRAVEL DISTANCE TO EXIT ENCLOSURE: 75'
 COMMON PATH OF TRAVEL: 30'



3 CODE PLAN - FOURTH FLOOR
 1/8" = 1'-0"

IBC 2009 CODE REVIEW SUMMARY

CONSTRUCTION TYPE: III-B
 USE & OCCUPANCY CLASSIFICATION (304.1)
 BUSINESS GROUP B - FLOORS 2,3 AND 4
 MERCANTILE GROUP M - FLOOR 1
 ASSEMBLY GROUP A - FLOOR 1
 STORAGE GROUP S - BASEMENT
 OCCUPANCY LOAD (1004.1)
 BUSINESS 100 SF/PERSON GROSS
 MERCANTILE 30 SF/PERSON GROSS
 ASSEMBLY 15 SF/PERSON NET
 ACCESSORY STORAGE 300 SF/PERSON GROSS
 SEPARATION OF OCCUPANCIES (508.4)
 ASSEMBLY -> BUSINESS: 1-HOUR WITH SPRINKLER
 COMMON PATH OF TRAVEL (1014.3)
 75'
 EXIT TRAVEL DISTANCE (1016.1)
 300' WITH SPRINKLER SYSTEM
 NUMBER OF EXITS (1021.1)
 OCCUPANT LOAD 1-500 PER STORY; 2 INDEPENDENT EXITS

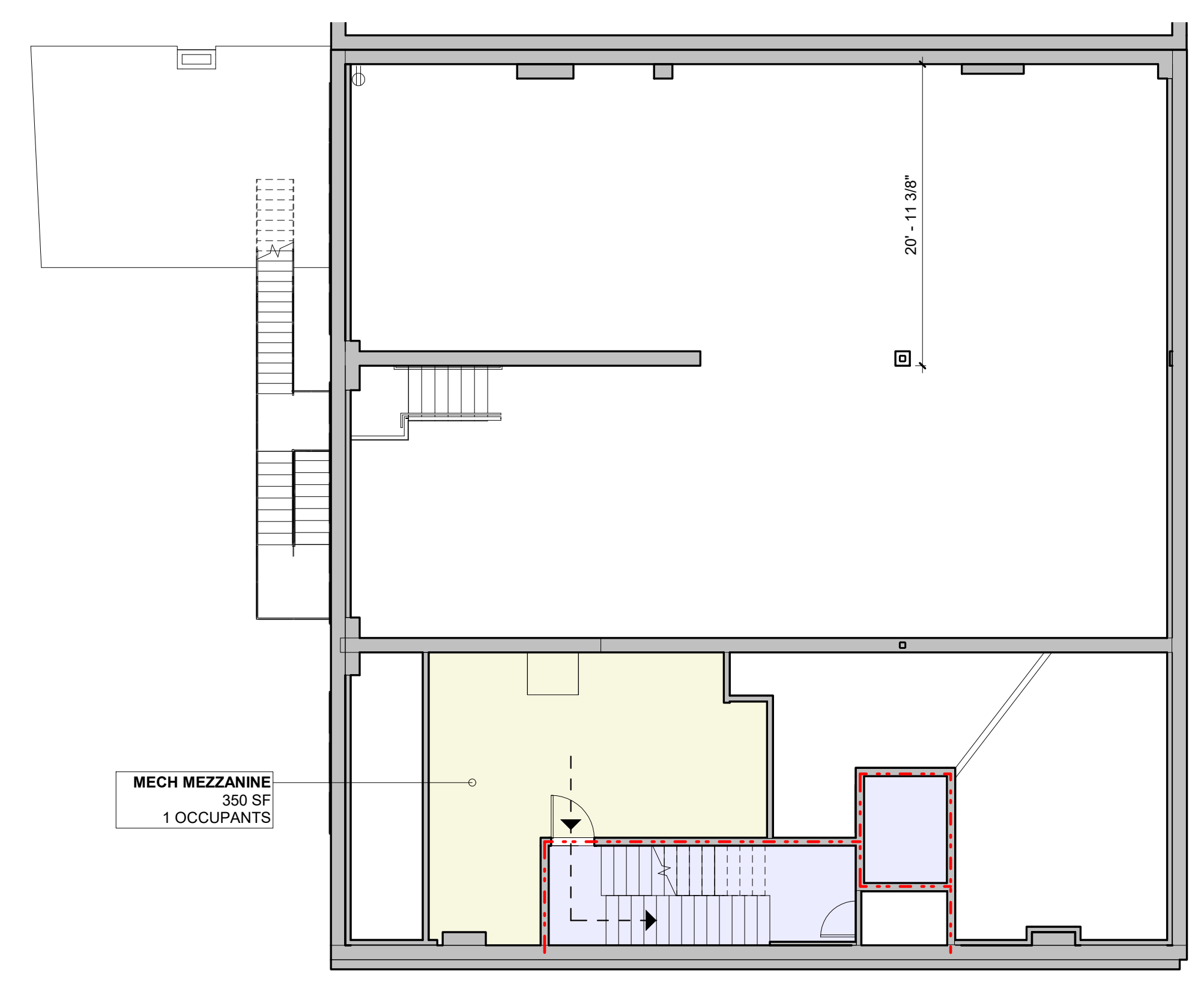
IFPA 201 CODE REVIEW SUMMARY

ALTERATION LEVEL 3: THE WORK AREA EXCEEDS 50 PERCENT OF THE AGGREGATE AREA OF THE BUILDING
 EXISTING VERTICAL OPENINGS (703.2.1)
 EXISTING VERTICAL OPENINGS SHALL BE ENCLOSED WITH A 1-HOUR FIRE RATED ENCLOSURE
 CORRIDOR FIRE RATINGS (704.1.1)
 NO RATING REQUIRED WITH SPRINKLER SYSTEM

NFPA 101 CODE REVIEW SUMMARY

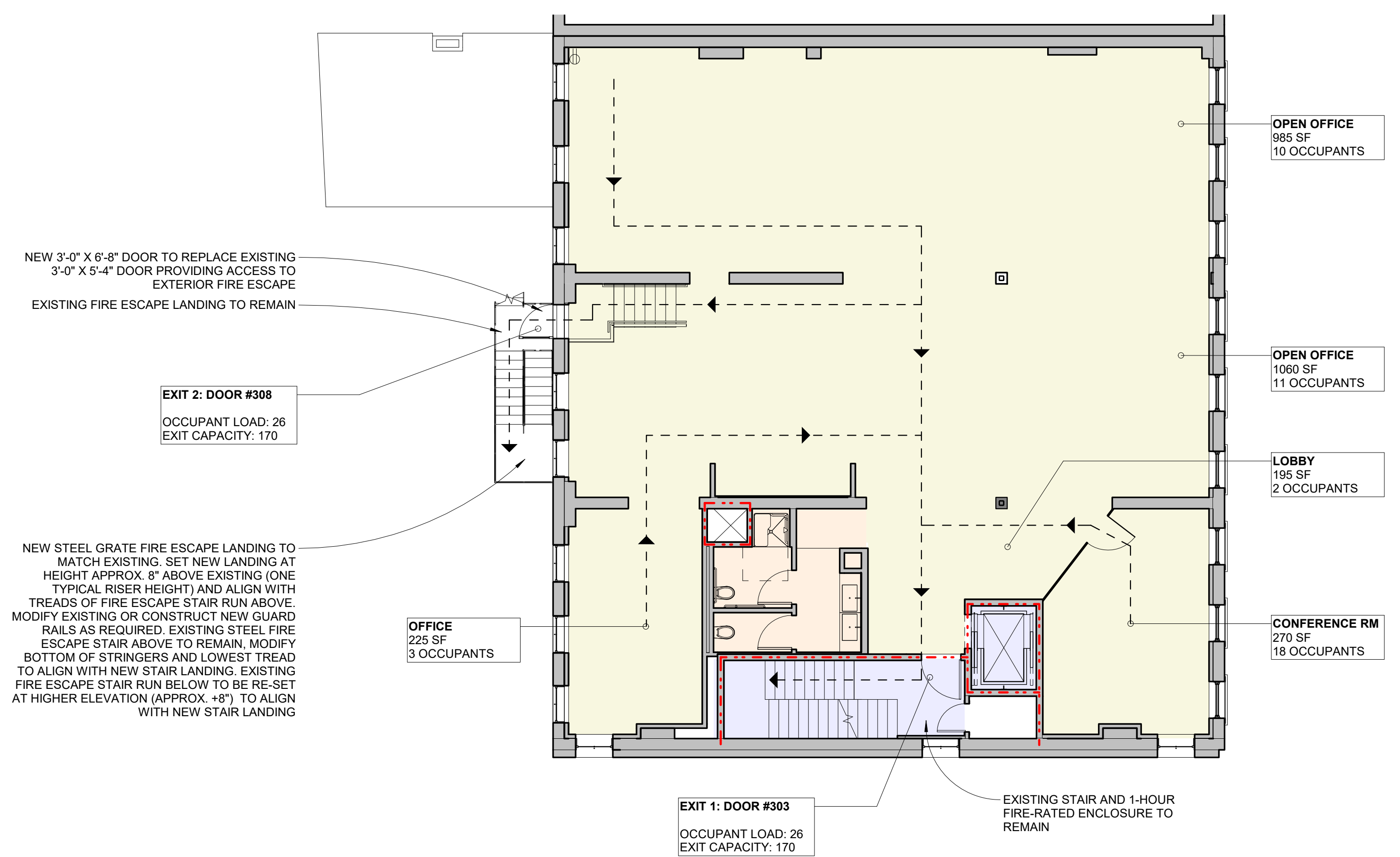
CONSTRUCTION TYPE (NFPA 220)
 TYPE III 200
 OCCUPANCY CLASSIFICATION (NFPA 101 6.1.1.1)
 BUSINESS, ASSEMBLY, MERCANTILE, STORAGE
 SPRINKLER SYSTEM
 FULLY SPRINKLED, SUPERVISED
 OCCUPANT LOAD FACTORS (7.3.1.2)
 BUSINESS 100 SF/PERSON
 ASSEMBLY 15 SF/PERSON
 MERCANTILE 30 SF/PERSON
 STORAGE 300SF/PERSON
 NUMBER OF MEANS OF EGRESS (7.4)
 2
 COMMON PATH OF TRAVEL (39.2.5.3.3)
 75'
 TRAVEL DISTANCE (39.2.6.3)
 300' WITH SPRINKLER SYSTEM
 EGRESS DOOR CAPACITY FACTOR
 0.2

2 CODE PLAN - THIRD FLOOR MEZZANINE
 1/8" = 1'-0"



1 CODE PLAN - THIRD FLOOR
 1/8" = 1'-0"

THIRD FLOOR TOTAL OCCUPANTS: 51
 MAX TRAVEL DISTANCE TO EXIT ENCLOSURE: 75'
 COMMON PATH OF TRAVEL: 45'



A002