

**80 EXCHANGE STREET**  
 PORTLAND, MAINE  
 OFFICE RENOVATION



CONSULTANTS:

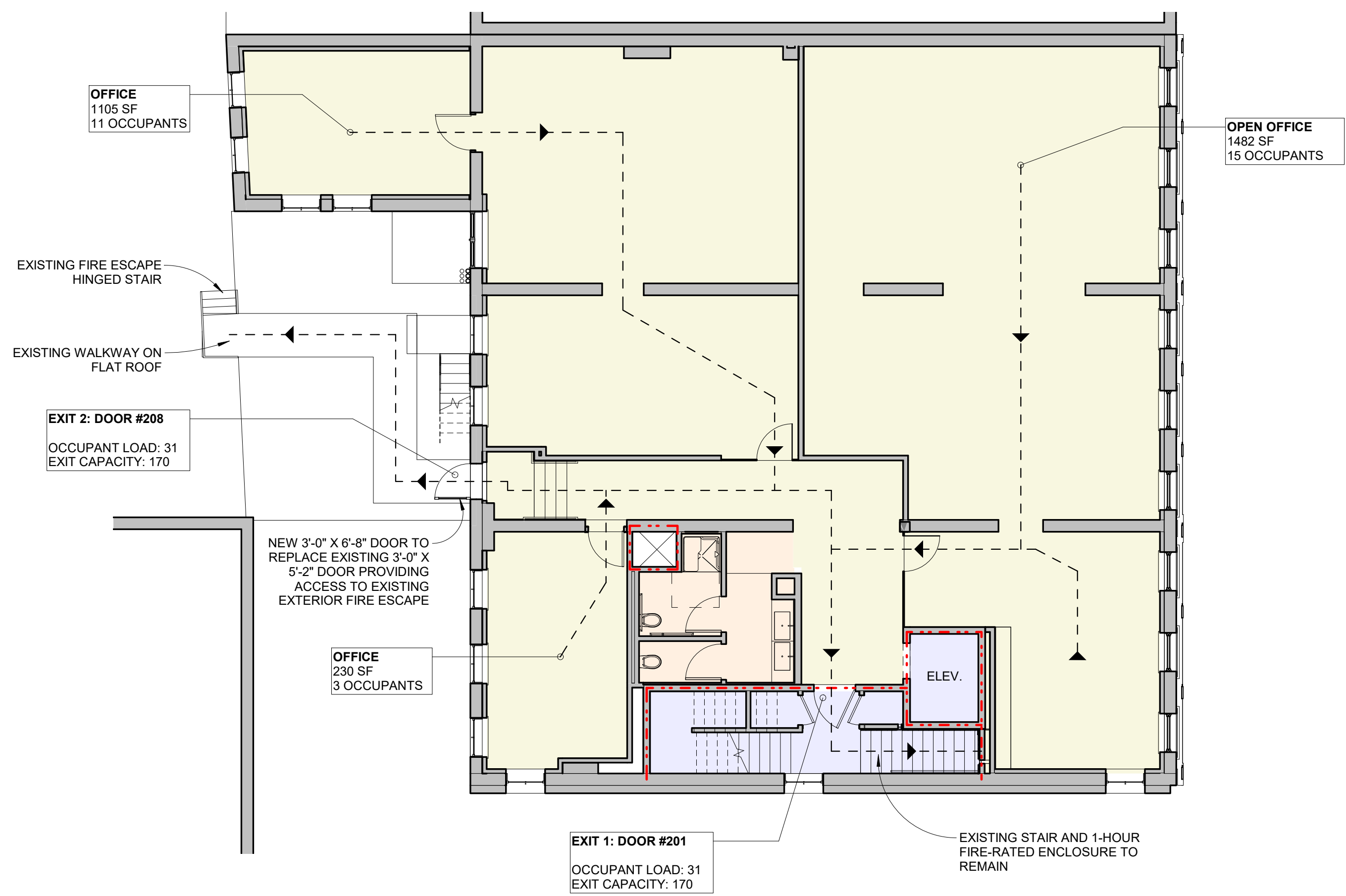
REVISIONS:		
No.	Name	Date
1	REV 1	1/5/18

**ISSUED FOR PERMITTING**

ISSUED: 11/01/17  
 PROJECT No: 1714  
 DRAWN BY: RIP  
 CHECKED BY:  
 SHEET TITLE:  
 CODE REVIEW & EGRESS PLANS

**A001**

SECOND FLOOR TOTAL OCCUPANTS: 29  
 MAX TRAVEL DISTANCE TO EXIT ENCLOSURE: 95'  
 COMMON PATH OF TRAVEL: 65'



③ CODE PLAN - SECOND FLOOR  
 1/8" = 1'-0"

**IBC 2009 CODE REVIEW SUMMARY**

CONSTRUCTION TYPE: III-B

USE & OCCUPANCY CLASSIFICATION (304.1)  
 BUSINESS GROUP B - FLOORS 2,3 AND 4  
 MERCANTILE GROUP M - FLOOR 1  
 ASSEMBLY GROUP A - FLOOR 1  
 STORAGE GROUP S - BASEMENT

OCCUPANCY LOAD (1004.1)  
 BUSINESS 100 SF/PERSON GROSS  
 MERCANTILE 30 SF/PERSON GROSS  
 ASSEMBLY 15 SF/PERSON NET  
 ACCESSORY STORAGE 300 SF/PERSON GROSS

SEPARATION OF OCCUPANCIES (508.4)  
 ASSEMBLY -> BUSINESS: 1-HOUR WITH SPRINKLER

COMMON PATH OF TRAVEL (1014.3)  
 75'

EXIT TRAVEL DISTANCE (1016.1)  
 300' WITH SPRINKLER SYSTEM

NUMBER OF EXITS (1021.1)  
 OCCUPANT LOAD 1-500 PER STORY; 2 INDEPENDENT EXITS

**IFBC 2009 CODE REVIEW SUMMARY**

ALTERATION LEVEL 3: THE WORK AREA EXCEEDS 50 PERCENT OF THE AGGREGATE AREA OF THE BUILDING

EXISTING VERTICAL OPENINGS (703.2.1)  
 EXISTING VERTICAL OPENINGS SHALL BE ENCLOSED WITH A 1-HOUR FIRE RATED ENCLOSURE

CORRIDOR FIRE RATINGS (704.1.1)  
 NO RATING REQUIRED WITH SPRINKLER SYSTEM

**NFPA 101 CODE REVIEW SUMMARY**

CONSTRUCTION TYPE (NFPA 220)  
 TYPE III 200

OCCUPANCY CLASSIFICATION (NFPA 101 6.1.11)  
 BUSINESS, ASSEMBLY, MERCANTILE, STORAGE

SPRINKLER SYSTEM  
 FULLY SPRINKLED, SUPERVISED

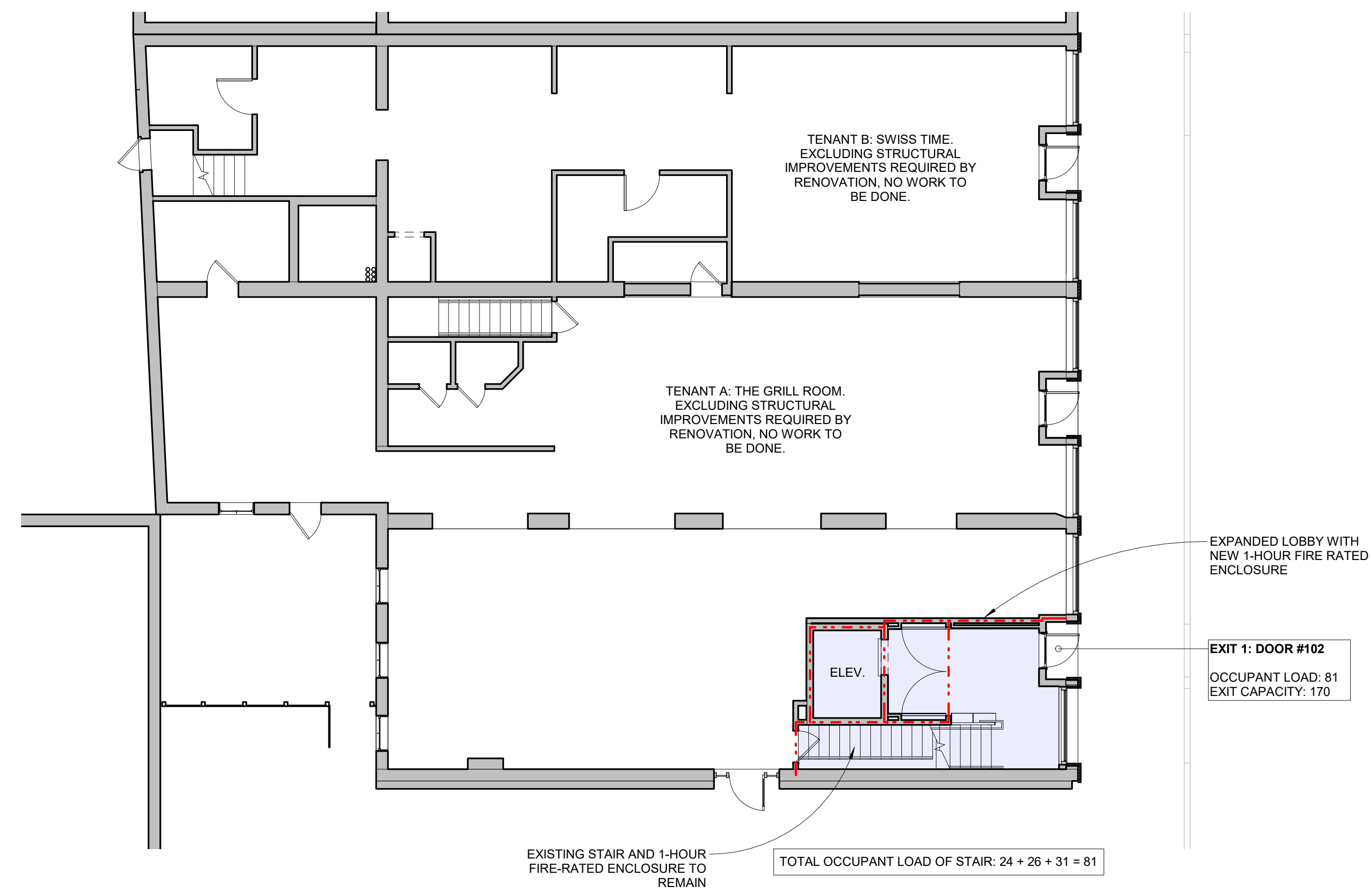
OCCUPANT LOAD FACTORS (7.3.1.2)  
 BUSINESS 100 SF/PERSON  
 ASSEMBLY 15 SF/PERSON  
 MERCANTILE 30 SF/PERSON  
 STORAGE 300SF/PERSON

NUMBER OF MEANS OF EGRESS (7.4)  
 2

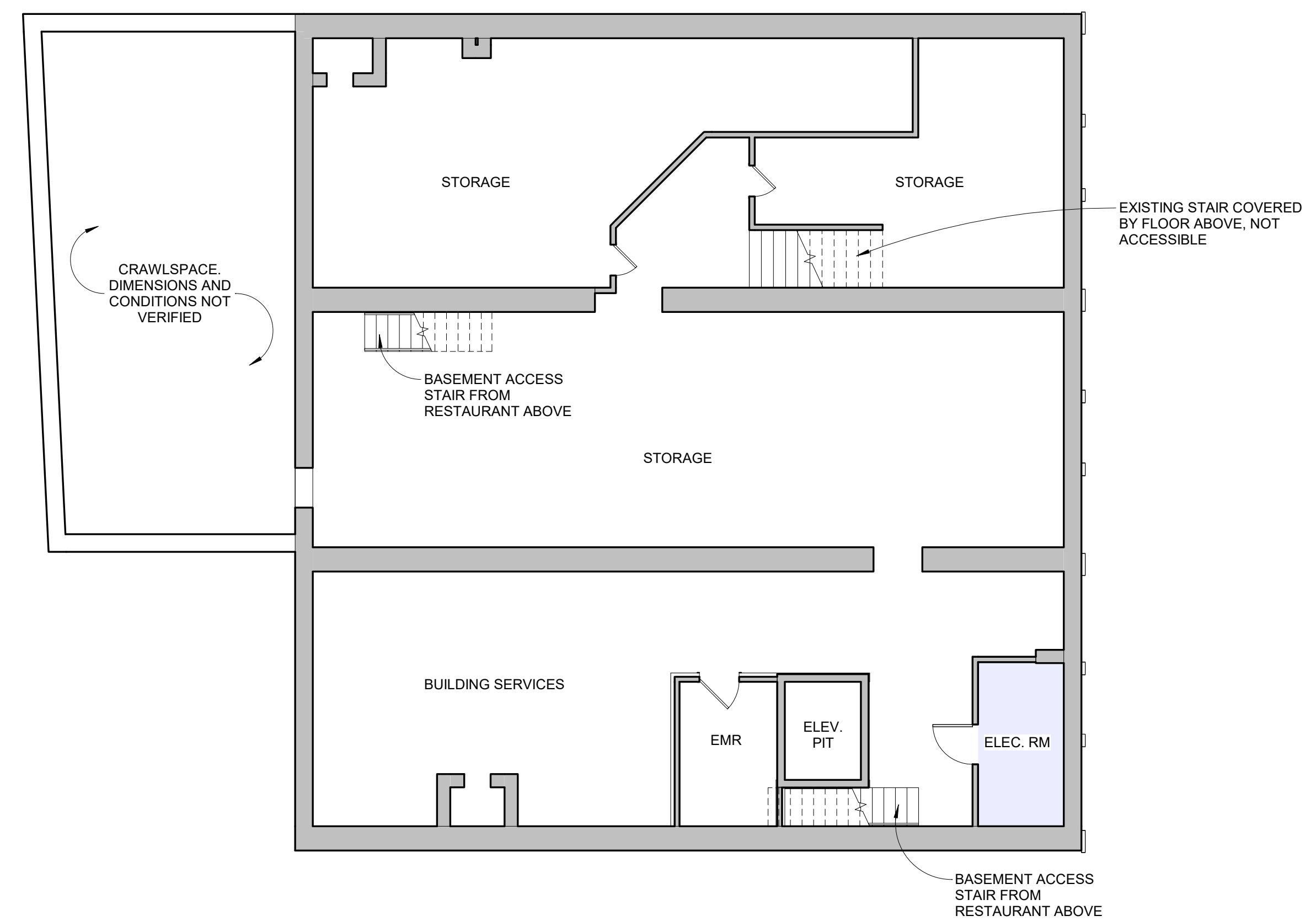
COMMON PATH OF TRAVEL (39.2.5.3.3)  
 75'

TRAVEL DISTANCE (39.2.6.3)  
 300' WITH SPRINKLER SYSTEM

EGRESS DOOR CAPACITY FACTOR  
 0.2



① CODE PLAN - FIRST FLOOR  
 1/8" = 1'-0"



② CODE PLAN - BASEMENT  
 1/8" = 1'-0"