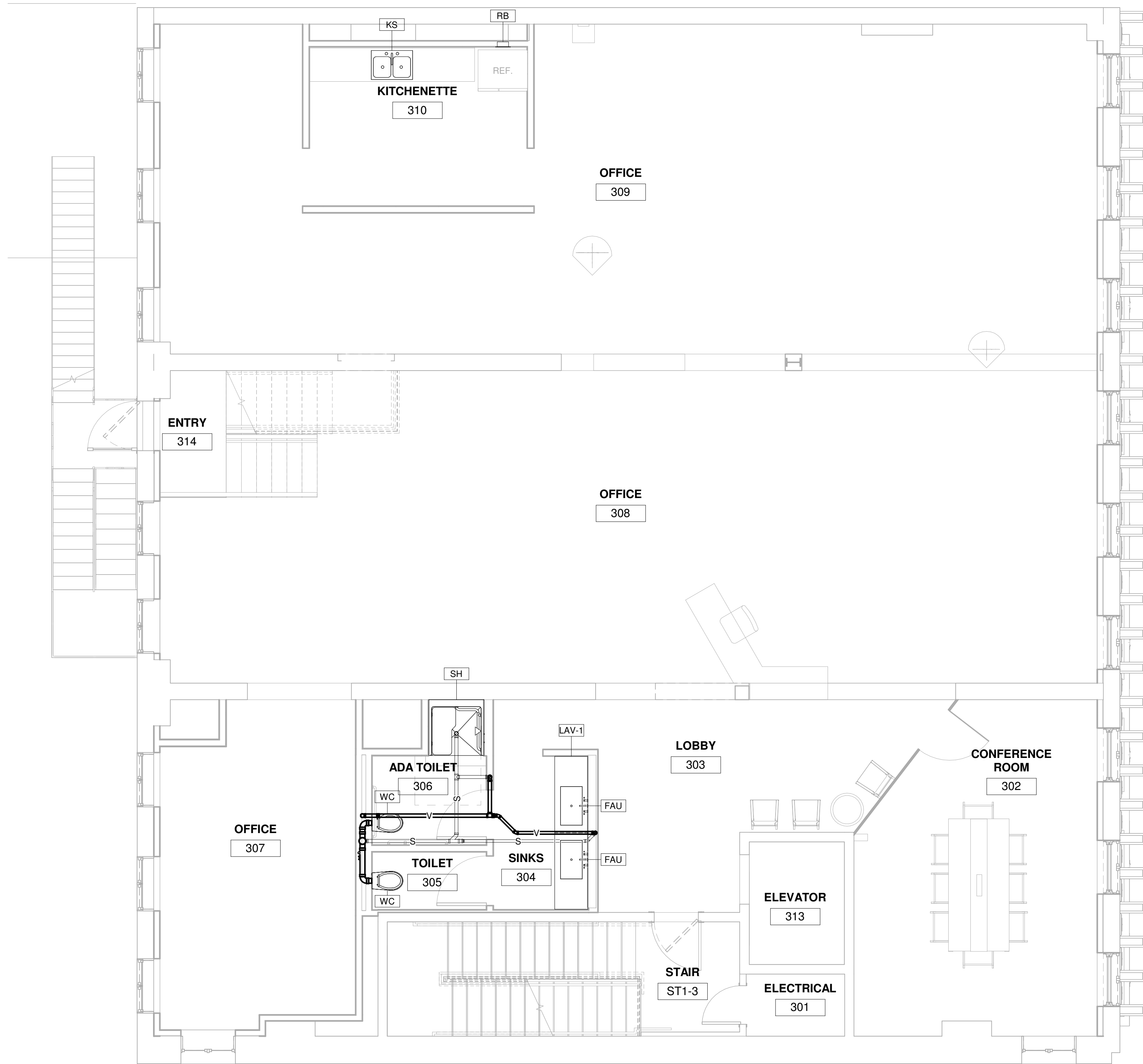


NOT FOR
CONSTRUCTION



80 EXCHANGE STREET
PORTLAND, MAINE
OFFICE RENOVATION

BRIBURN
architecture for life
28 Maple St. Suite 202 Portland, ME 04101 (207) 774-8482

CONSULTANTS:
RIPCORN
engineering
PO BOX 4175
PORTLAND, ME 04101
207-835-4060
www.ripcornengineering.com

REVISIONS:

No.	Name	Date

ISSUED:
PROJECT No: 17-029
DRAWN BY: JPS
CHECKED BY: SMB
SHEET TITLE:
PLUMBING THIRD
FLOOR PLAN

P101.2

1 PLUMBING THIRD FLOOR PLAN
1/4" = 1'-0"