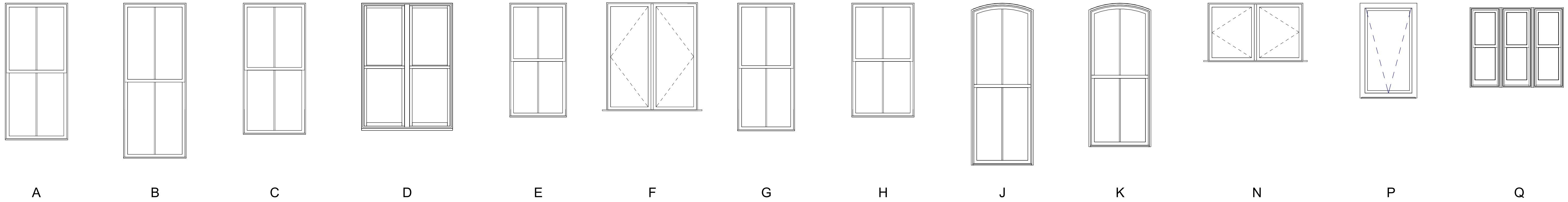


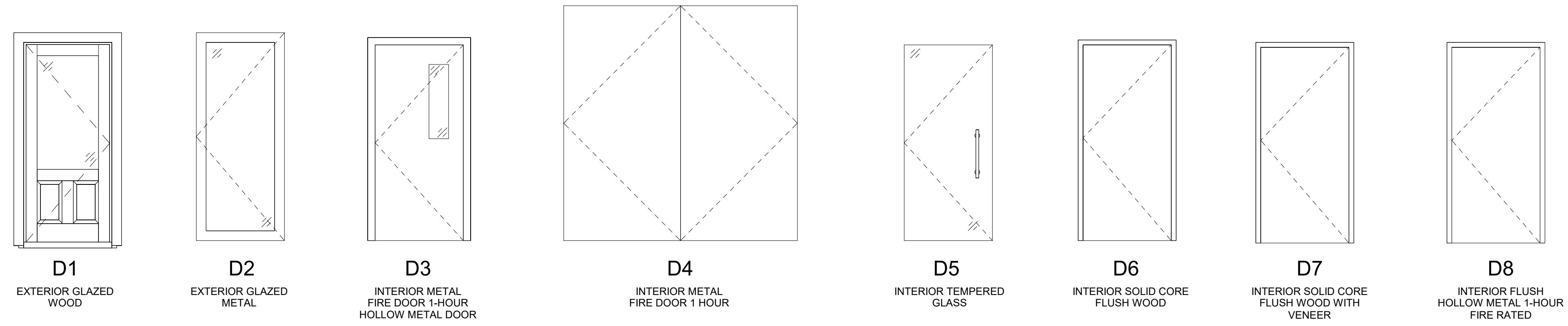
No.	Name	Date



WINDOW LEGEND
3/8" = 1'-0"

WINDOW SCHEDULE							
TYPE	WIDTH	HEIGHT	COUNT	REPLACEMENT OR NEW	OPERATION	NOTES	MATERIAL
A	3'-3 1/2"	7'-2 1/2"	16	REPLACEMENT	DOUBLE HUNG	WINDOW TO FILL ORIGINAL EXISTING OPENING	ALUMINUM-CLAD WOOD
C	3'-3 1/2"	6'-11"	10	REPLACEMENT	DOUBLE HUNG	WINDOW TO FILL ORIGINAL EXISTING OPENING	ALUMINUM-CLAD WOOD
D	4'-9 1/2"	6'-8 1/2"	2	REPLACEMENT	DOUBLE HUNG MULLED	WINDOW TO FILL ORIGINAL EXISTING OPENING	ALUMINUM-CLAD WOOD
E	3'-0"	6'-0"	6	REPLACEMENT	DOUBLE HUNG	WINDOW TO FILL ORIGINAL EXISTING OPENING	ALUMINUM-CLAD WOOD
F	3'-3 1/2"	5'-2 1/2"	5	REPLACEMENT	CASEMENT	WINDOW TO FILL ORIGINAL EXISTING OPENING	ALUMINUM-CLAD WOOD
G	3'-0"	6'-8 3/4"	1	REPLACEMENT	DOUBLE HUNG	WINDOW TO FILL ORIGINAL EXISTING OPENING	ALUMINUM-CLAD WOOD
H	3'-3 1/2"	6'-0"	2	REPLACEMENT	DOUBLE HUNG	WINDOW TO FILL ORIGINAL EXISTING OPENING	ALUMINUM-CLAD WOOD
J	3'-3"	8'-0"	9	REPLACEMENT	DOUBLE HUNG	WINDOW TO FILL ORIGINAL EXISTING OPENING. SEGMENTED ARCH TOP.	ALUMINUM-CLAD WOOD
K	3'-3"	7'-5"	9	REPLACEMENT	DOUBLE HUNG	WINDOW TO FILL ORIGINAL EXISTING OPENING. SEGMENTED ARCH TOP.	ALUMINUM-CLAD WOOD
N	5'-0"	3'-1"	3	REPLACEMENT	CASEMENT	PROFILES TO MATCH DOUBLE HUNG WINDOWS	ALUMINUM-CLAD WOOD
P	3'-0"	5'-0"	12	NEW	TILT/TURN	NEW WINDOW IN NEW DORMER WALL	ALUMINUM-CLAD WOOD
Q	4'-11"	4'-2 1/2"	1	REPLACEMENT	DOUBLE HUNG MULLED	WINDOW TO FILL ORIGINAL EXISTING OPENING	ALUMINUM-CLAD WOOD

WINDOW BASIS OF DESIGN: JELD-WEN SITELINE ALUMINUM-CLAD WOOD



DOOR LEGEND
3/8" = 1'-0"

DOOR SCHEDULE										
LEVEL	MAR K	TYPE	WIDTH	HEIGHT	NEW / EXIST	FIRE RATING	CLOSER	POSITIVE LATCH	PANIC HARDWARE	Comments
BASEMENT										
BASEMENT	001	D8	3'-0"	6'-8"	NEW	1-HOUR	X	X		
LEVEL 1										
LEVEL 1	101	D4	7'-6"	8'-0"	NEW	1-HOUR	X	X		MAGNETIC HOLD-OPENS
LEVEL 1	102	D1	3'-0"	7'-0"	NEW		X	X	X	
LEVEL 1	103	D1	3'-0"	7'-0"	NEW		X	X	X	
LEVEL 1	104	D1	3'-0"	7'-0"	NEW		X	X	X	
LEVEL 2										
LEVEL 2	201	D3	3'-0"	8'-0"	NEW	1-HOUR	X	X		
LEVEL 2	202	D5	3'-0"	6'-8"	NEW		X	X		
LEVEL 2	205	D7	3'-0"	6'-8"	NEW		X	X		
LEVEL 2	206	D6	3'-0"	6'-8"	NEW		X	X		
LEVEL 2	206	D7	3'-0"	6'-8"	NEW		X	X		
LEVEL 2	208	D2	3'-0"	6'-8"	NEW		X	X		
LEVEL 2	210	D6	3'-0"	6'-8"	NEW		X	X		
LEVEL 2	E200	D8	2'-4"	7'-0"	EXISTING	1-HOUR	X	X		
LEVEL 2	E201	D8	2'-4"	7'-0"	EXISTING	1-HOUR	X	X		

DOOR SCHEDULE										
LEVEL	MAR K	TYPE	WIDTH	HEIGHT	NEW / EXIST	FIRE RATING	CLOSER	POSITIVE LATCH	PANIC HARDWARE	Comments
LEVEL 3										
LEVEL 3	302	D5	3'-0"	6'-8"	NEW		X	X		
LEVEL 3	303	D3	3'-0"	8'-0"	NEW	1-HOUR	X	X		
LEVEL 3	305	D7	3'-0"	6'-8"	NEW		X	X		
LEVEL 3	306	D7	3'-0"	6'-8"	NEW		X	X		
LEVEL 3	308	D2	3'-0"	6'-8"	NEW		X	X		
LEVEL 3	E301	D8	2'-4"	7'-0"	EXISTING	1-HOUR	X	X		
LEVEL 4										
LEVEL 4	402	D5	3'-0"	8'-0"	NEW		X	X		
LEVEL 4	403	D3	3'-0"	8'-0"	NEW	1-HOUR	X	X		
LEVEL 4	405	D7	3'-0"	6'-8"	NEW		X	X		
LEVEL 4	406	D7	3'-0"	6'-8"	NEW		X	X		
LEVEL 4	407	D6	3'-0"	6'-8"	NEW		X	X		
LEVEL 4	408	D2	3'-0"	6'-8"	NEW		X	X		
LEVEL 4	E401	D8	2'-4"	7'-0"	EXISTING	1-HOUR	X	X		