

80 EXCHANGE STREET
 PORTLAND, MAINE
 OFFICE RENOVATION



CONSULTANTS:

REVISIONS:

No.	Name	Date

ISSUED FOR PERMITTING

ISSUED: 11/01/17

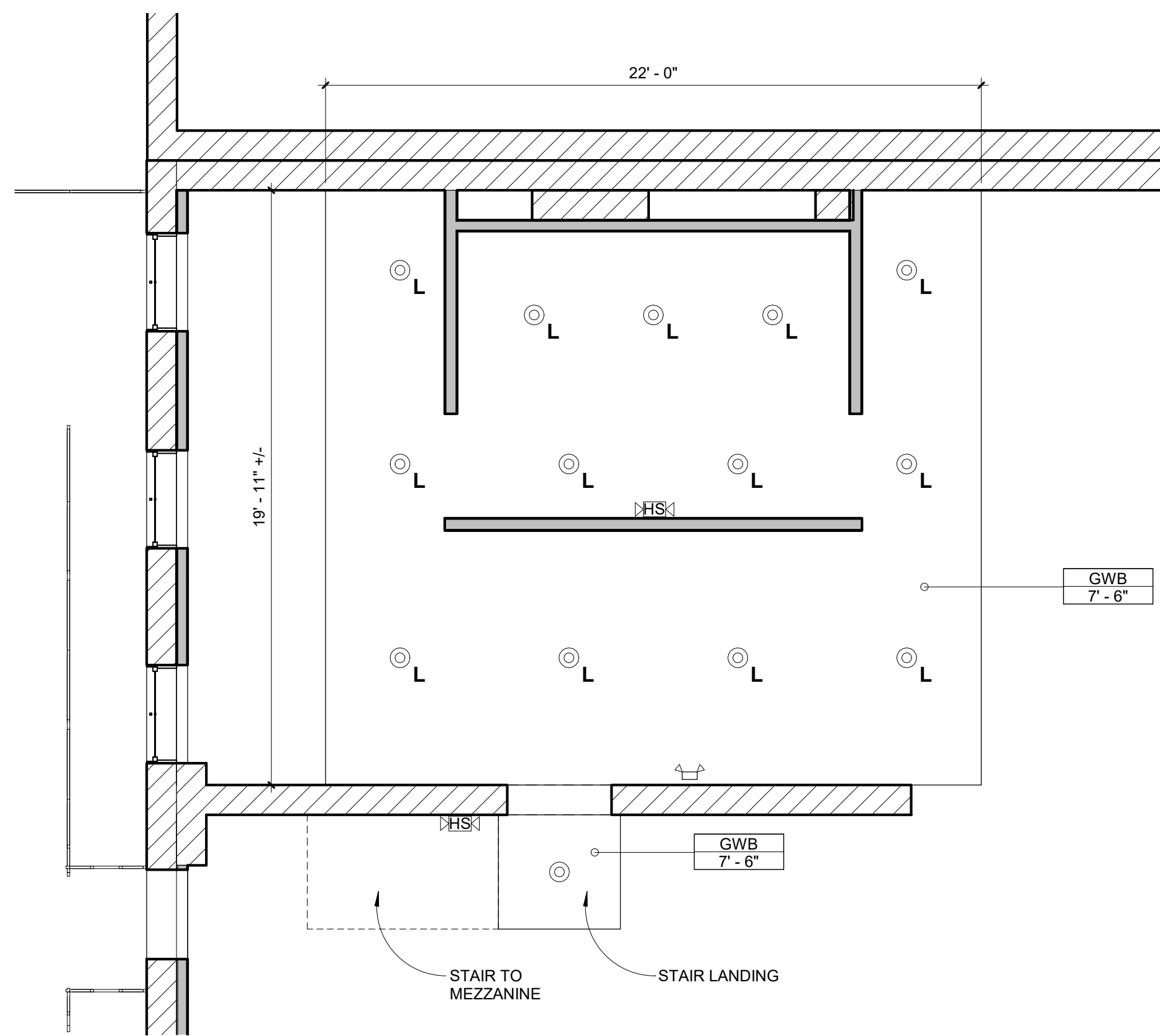
PROJECT No: 1714

DRAWN BY: RIP

CHECKED BY:

SHEET TITLE:
 THIRD FLOOR REFLECTED CEILING PLAN

A113



② THIRD FLOOR REFLECTED CEILING PLAN BELOW MEZZANINE
 1/4" = 1'-0"

ELECTRICAL/LIGHTING SYMBOL LEGEND

	SURFACE MOUNTED LIGHT FIXTURE		STROBE ONLY NOTIFICATION DEVICE
	RECESSED LIGHT FIXTURE		HORN/STROBE NOTIFICATION DEVICE
	WALL MOUNTED LIGHT FIXTURE		SMOKE DETECTOR
	EXHAUST FAN/LIGHT		EXIT SIGN
	4' SURFACE MOUNTED LIGHT FIXTURE		FIRE ALARM PULL STATION
	UNDER-CABINET LIGHT FIXTURE		EMERGENCY LIGHT
	PENDANT LIGHT FIXTURE		FIRE ALARM CONTROL PANEL
	WALL MOUNTED STRIP LIGHT		
	2X2 LED TROFFER		CHILLED BEAM DIFFUSER
	LED PENDANT STRIP LIGHT		

GENERAL CEILING NOTES:

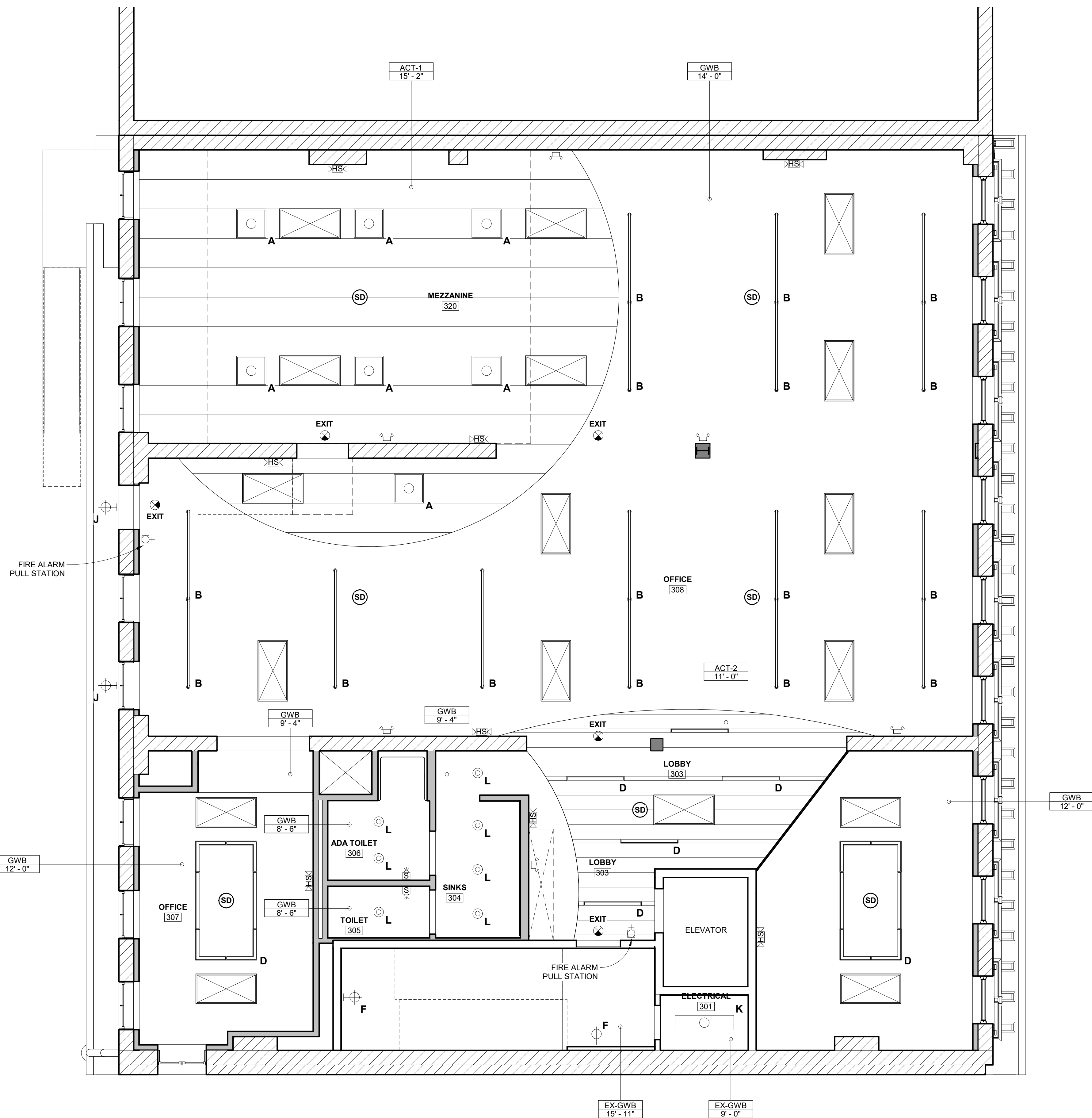
- EXISTING SPRINKLER PIPES TO BE RELOCATED AS REQUIRED TO FIT ABOVE CEILING HEIGHTS SHOWN ON DRAWINGS. PROVIDE NEW DROPS TO CONCEALED HEADS IN NEW OPEN OFFICE AREAS, TYP. PROVIDE NEW DROPS TO HANGERS IN TOILET ROOMS AND STORAGE ROOMS. MODIFICATIONS TO SPRINKLER SYSTEM TO BE DESIGN-BUILD BY SPRINKLER SUB-CONTRACTOR TO MEET REQUIREMENTS OF NFPA 13.
- COORDINATE ALL CEILING HEIGHTS IN THE FIELD WITH STRUCTURAL CONDITIONS, MECHANICAL, ELECTRICAL AND PLUMBING TRADES.
- SEAL ALL PENETRATIONS IN RATED WALLS AND IN FLOOR AND CEILING ASSEMBLIES WITH FIRE-STOPPING TO REDUCE THE RISK OF THE SPREAD OF FIRE AND SMOKE.
- PROVIDE FIRE ALARM SYSTEM WITH SMOKE DETECTORS, PULL STATIONS AND NOTIFICATION DEVICES IN COMPLIANCE WITH NFPA 101 AND NFPA 72.
- CONTRACTOR OR ELECTRICAL ENGINEER SHALL EVALUATE POWER SUPPLY TO BUILDING TO DETERMINE IF UPGRADES OR MODIFICATIONS ARE REQUIRED TO ACCOMMODATE NEW ELECTRICAL EQUIPMENT LOADS.
- RELOCATED AND NEW DEVICES TO BE INSTALLED PER REQUIREMENTS OF APPLICABLE CODES AND REGULATIONS. VERIFY COMPLIANCE OF EXISTING DEVICES TO REMAIN PER SAID CODES AND REGULATIONS.
- MECHANICAL, PLUMBING, AND ELECTRICAL INSTALLATIONS TO BE PROVIDED PER APPLICABLE CODES. CONTRACTOR IS TO SEEK APPLICABLE PLUMBING AND ELECTRICAL PERMITS AS REQUIRED BY AUTHORITIES HAVING JURISDICTION. OWNER TO PROVIDE, GC TO COORDINATE.
- LIGHT FIXTURES TO BE LED LUMINAIRES AT 3500 KELVIN.

CEILING TYPES:

- GWB GYPSUM WALL BOARD
- GWB 1-HR TYPE-X GYPSUM WALL BOARD, 1-HOUR FIRE-RATED ASSEMBLY
- EX-GWB EXISTING GYPSUM WALL BOARD
- ACT-1 ARMSTRONG ULTIMA SHIPLAP ACOUSTICAL CEILING TILE
- ACT-2 ARMSTRONG METALWORKS LINEAR SUSPENDED CEILING

LIGHT FIXTURE TYPES:

- A FLUXWERX, INBOX, 2X2 TROFFER
- B FLUXWERX, VIEW, LINEAR PENDANT
- C FLUXWERX, PROFILE, LINEAR PENDANT
- D FLUXWERX, NOTCH 2, LINEAR RECESSED
- E WALL SCONCE, TBD
- F WALL SCONCE, TBD
- G SURFACE MOUNTED, TBD
- H PENDANT, TBD
- J EXTERIOR LED WALL PACK
- K 4" LINEAR SURFACE MOUNT
- L 4" LED RECESSED DOWNLIGHT
- M LUCE & LIGHT, SMOOTHY 2, LED RECESSED DOWNLIGHT
- N LUCE & LIGHT, SPOT 1, EXTERIOR LED SIGN LIGHT



① THIRD FLOOR REFLECTED CEILING PLAN
 1/4" = 1'-0"