

80 EXCHANGE STREET
PORTLAND, MAINE
OFFICE RENOVATION



CONSULTANTS:

REVISIONS:

No.	Name	Date

ISSUED FOR PERMITTING

ISSUED: 11/01/17

PROJECT No: 1714

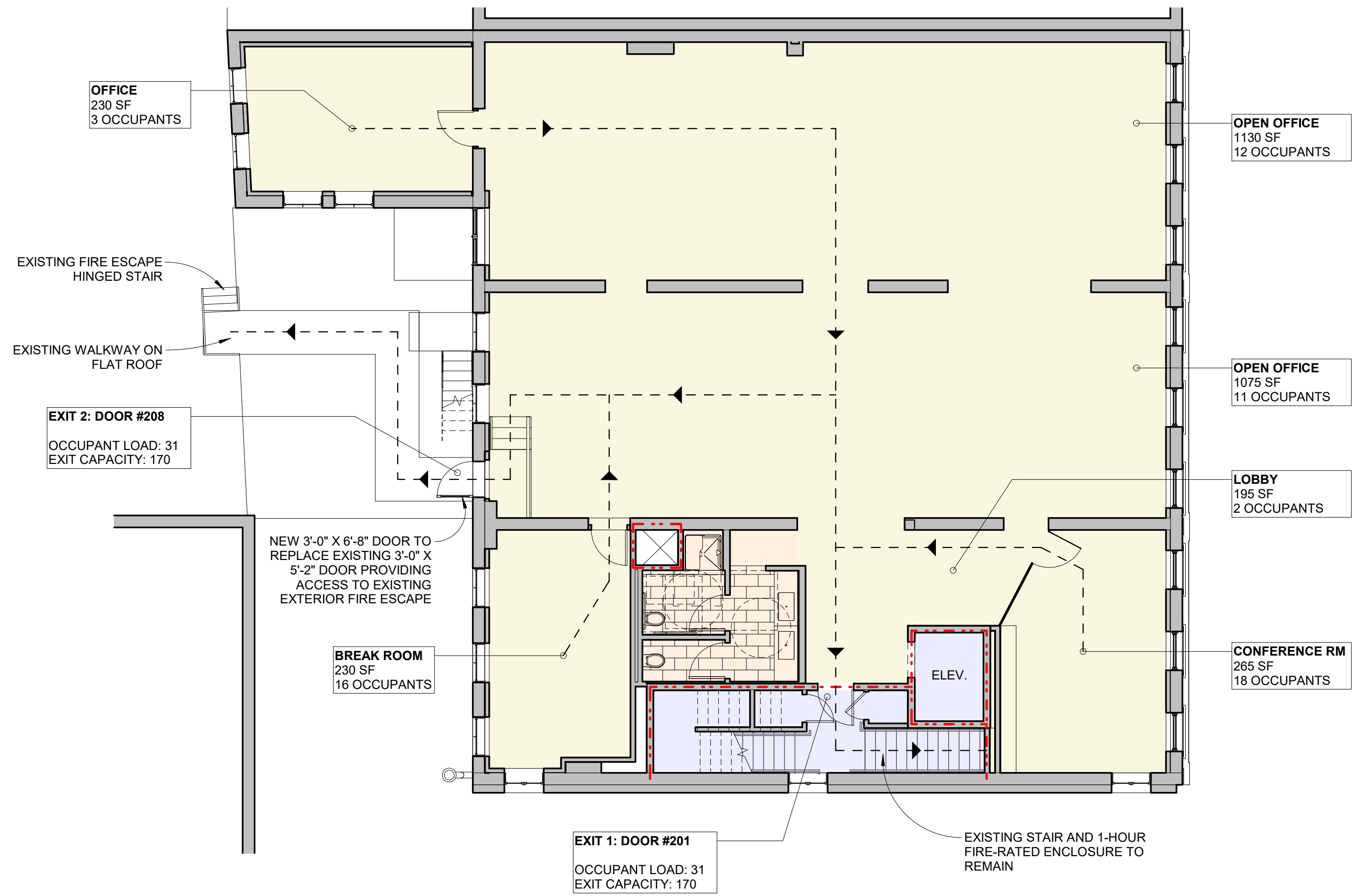
DRAWN BY: RIP

CHECKED BY:

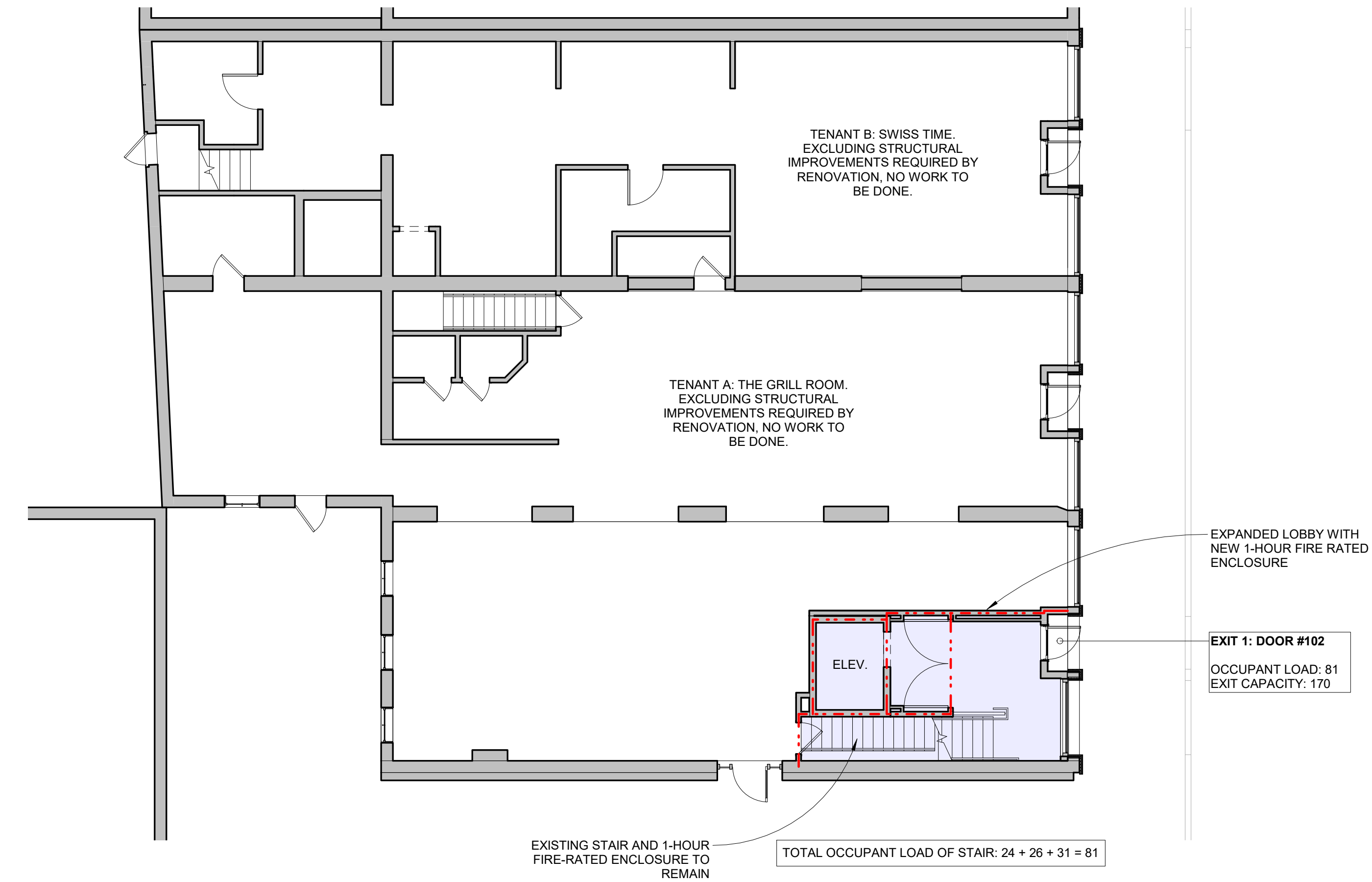
SHEET TITLE:
CODE REVIEW &
EGRESS PLANS

A001

SECOND FLOOR TOTAL OCCUPANTS: 62
MAX TRAVEL DISTANCE TO EXIT ENCLOSURE: 95'
COMMON PATH OF TRAVEL: 65'



3 CODE PLAN - SECOND FLOOR
1/8" = 1'-0"



1 CODE PLAN - FIRST FLOOR
1/8" = 1'-0"

IBC 2009 CODE REVIEW SUMMARY

CONSTRUCTION TYPE: III-B
USE & OCCUPANCY CLASSIFICATION (304.1)
BUSINESS GROUP B - FLOORS 2,3 AND 4
MERCANTILE GROUP M - FLOOR 1
ASSEMBLY GROUP A - FLOOR 1
STORAGE GROUP S - BASEMENT
OCCUPANCY LOAD (1004.1)
BUSINESS 100 SF/PERSON GROSS
MERCANTILE 30 SF/PERSON GROSS
ASSEMBLY 15 SF/PERSON NET
ACCESSORY STORAGE 300 SF/PERSON GROSS

SEPARATION OF OCCUPANCIES (508.4)
ASSEMBLY -> BUSINESS: 1-HOUR WITH SPRINKLER

COMMON PATH OF TRAVEL (1014.3)
75'

EXIT TRAVEL DISTANCE (1016.1)
300' WITH SPRINKLER SYSTEM

NUMBER OF EXITS (1021.1)
OCCUPANT LOAD 1-500 PER STORY; 2 INDEPENDENT EXITS

IFBC 2009 CODE REVIEW SUMMARY

ALTERATION LEVEL 3: THE WORK AREA EXCEEDS 50 PERCENT OF THE AGGREGATE AREA OF THE BUILDING

EXISTING VERTICAL OPENINGS (703.2.1)
EXISTING VERTICAL OPENINGS SHALL BE ENCLOSED WITH A 1-HOUR FIRE RATED ENCLOSURE

CORRIDOR FIRE RATINGS (704.1.1)
NO RATING REQUIRED WITH SPRINKLER SYSTEM

NFPA 101 CODE REVIEW SUMMARY

CONSTRUCTION TYPE (NFPA 220)
TYPE III 200

OCCUPANCY CLASSIFICATION (NFPA 101 6.1.11)
BUSINESS, ASSEMBLY, MERCANTILE, STORAGE

SPRINKLER SYSTEM
FULLY SPRINKLED, SUPERVISED

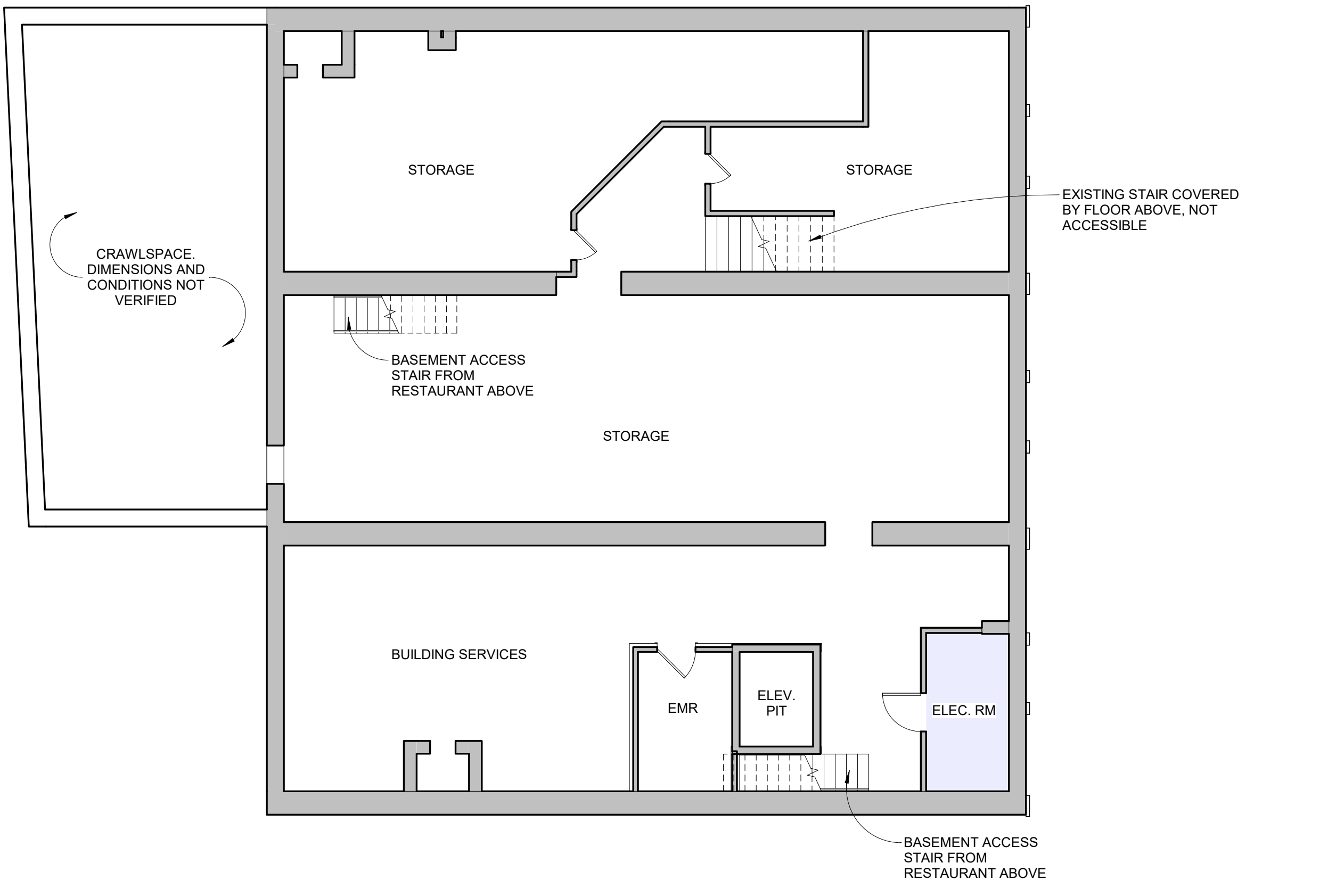
OCCUPANT LOAD FACTORS (7.3.1.2)
BUSINESS 100 SF/PERSON
ASSEMBLY 15 SF/PERSON
MERCANTILE 30 SF/PERSON
STORAGE 300SF/PERSON

NUMBER OF MEANS OF EGRESS (7.4)
2

COMMON PATH OF TRAVEL (39.2.5.3.3)
75'

TRAVEL DISTANCE (39.2.6.3)
300' WITH SPRINKLER SYSTEM

EGRESS DOOR CAPACITY FACTOR
0.2



2 CODE PLAN - BASEMENT
1/8" = 1'-0"