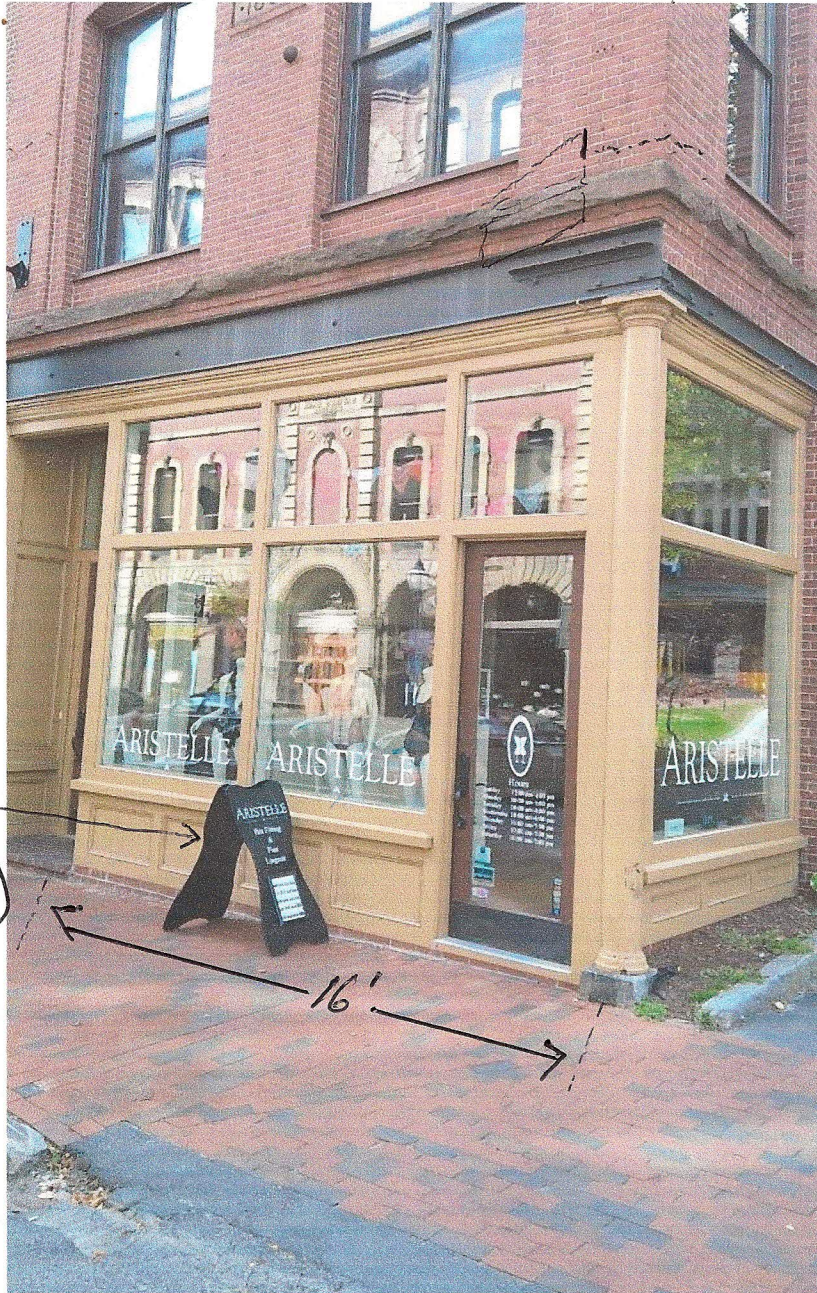


Aristelle – Storefront and Building



Notes:

1. The landlord (Peter Thompson / Landscape Properties) occupies and resides in the entire upstairs of the building. He has provided permission and is aware of the exact proposed location of the sign.
2. The sign will be fastened 18" in from the corner of the building (see marking).
3. Next page provides a side-view of the building. (Also see 'Mock-up of Location of Sign' doc.)
4. The store is adjacent to a driveway which leads to a parking area in the rear of the building and a parking garage.
5. The store frontage is 16' wide; 14' 4" height.
6. Sidewalk is approx 7.5' width (from storefront to curb).