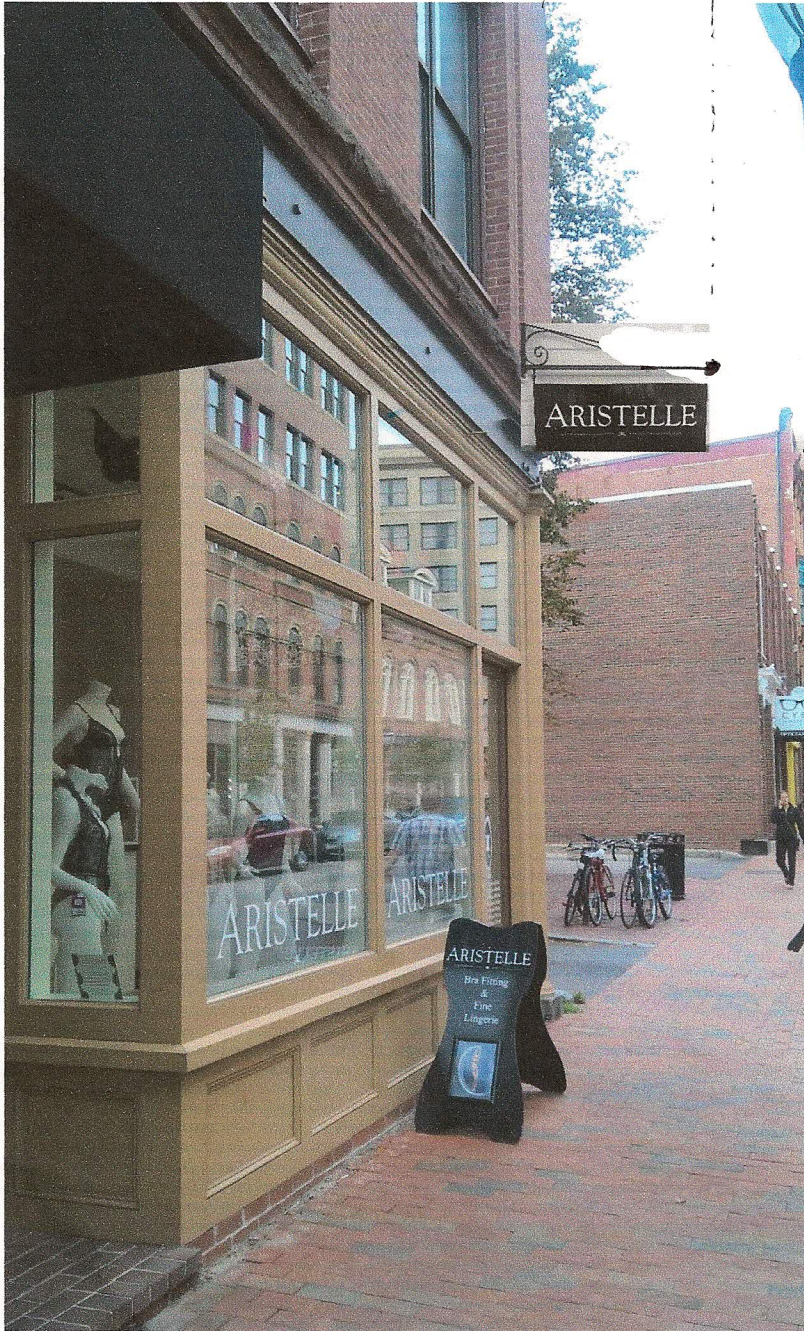


Mock-up (photoshop) of Location of Sign

47" → Farthest most point of sign fastener will be 47" out from brick wall.

- Sign will be fastened very close to where previous signs were hung (evident from former screw holes in brick). We will not use the former screw holes.



→ TOP OF SIGN WILL BE 14' 7" FROM SIDEWALK

→ BOTTOM OF SIGN WILL BE 12' 7" FROM SIDEWALK