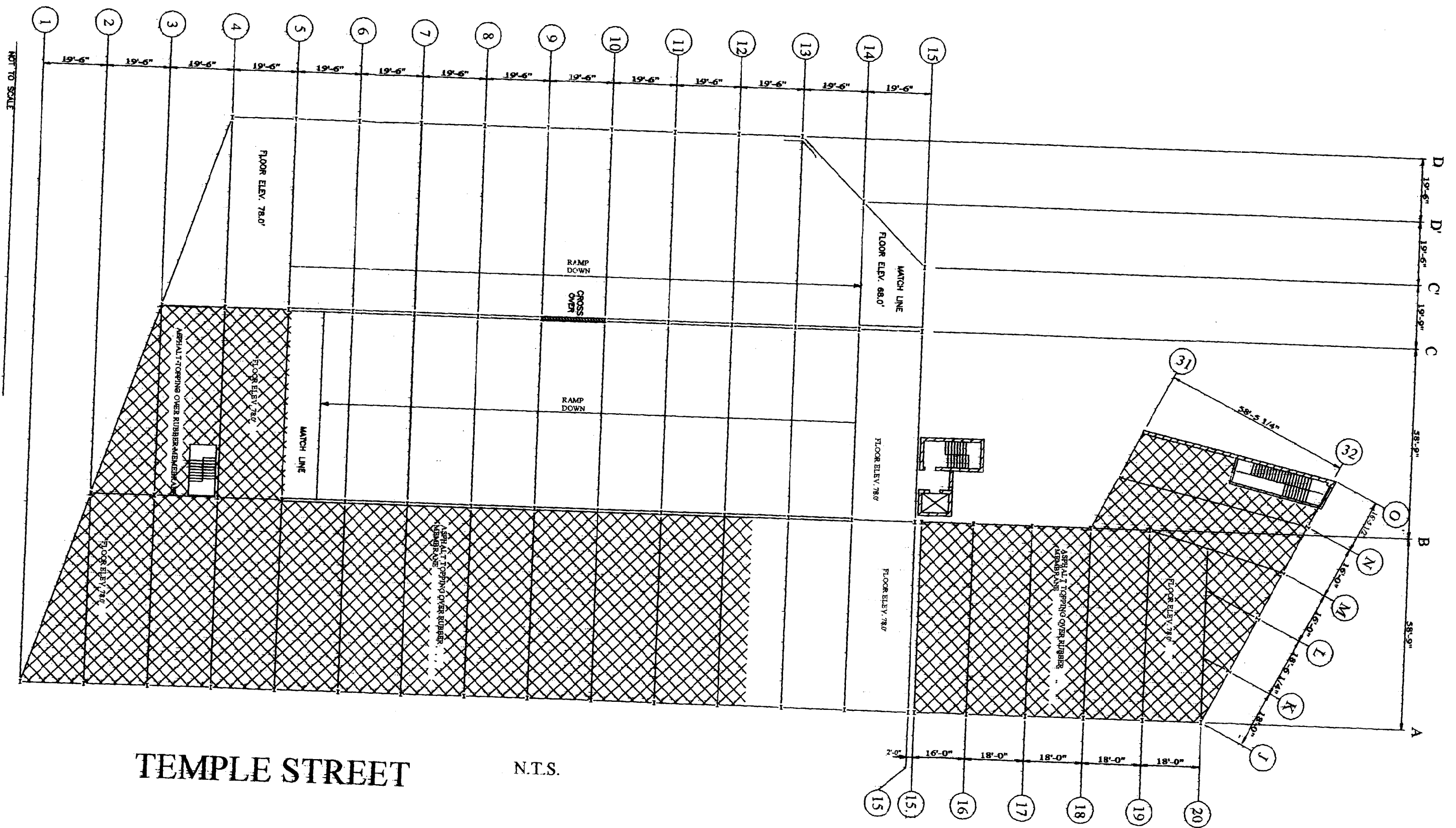


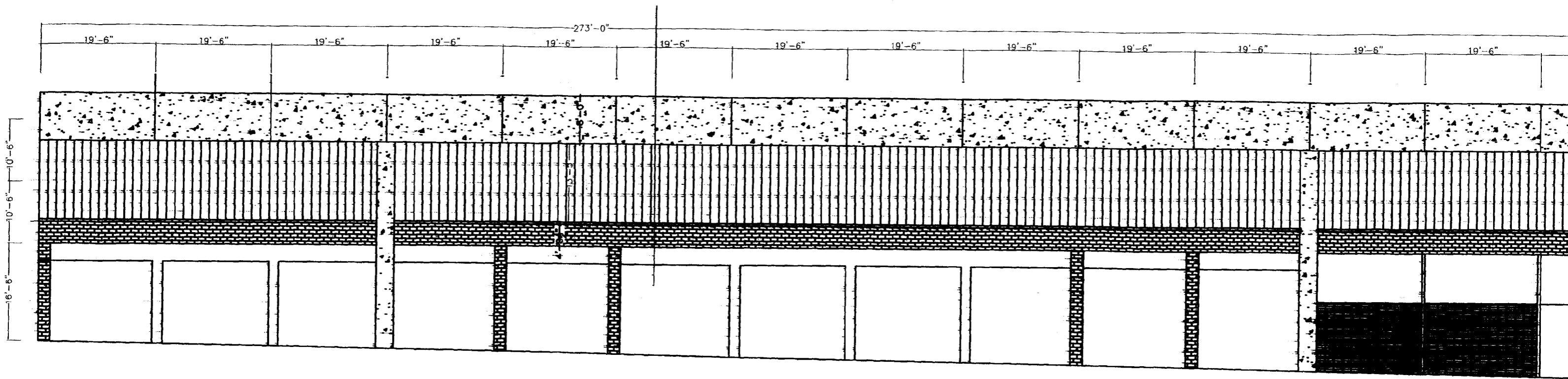
NOT TO SCALE

N.T.S.



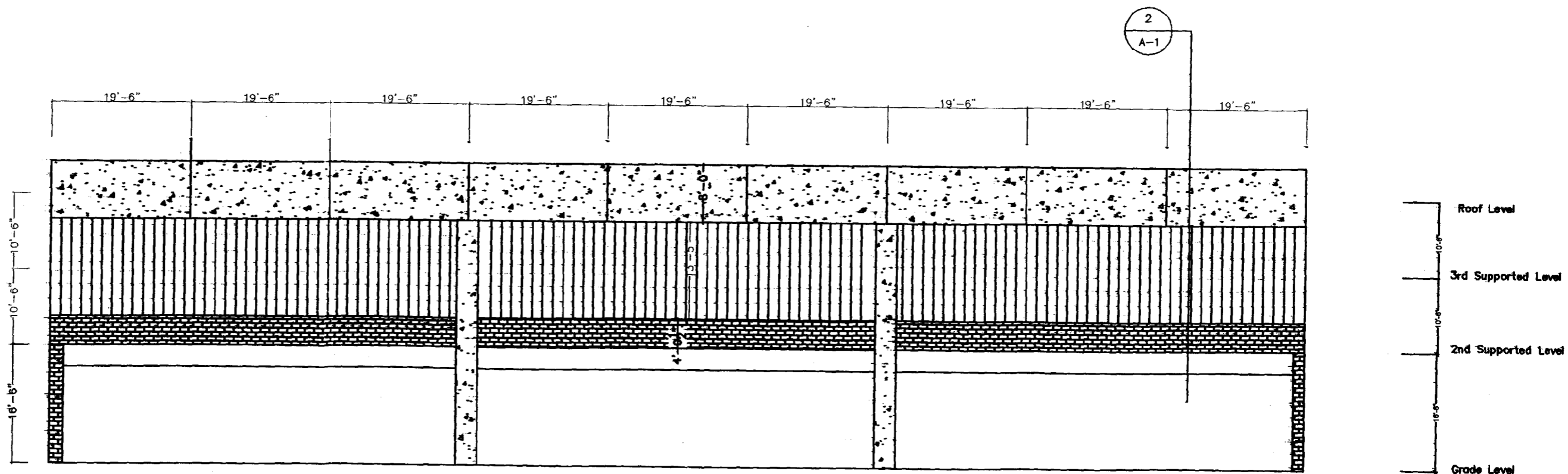
TEMPLE STREET

N.T.S.



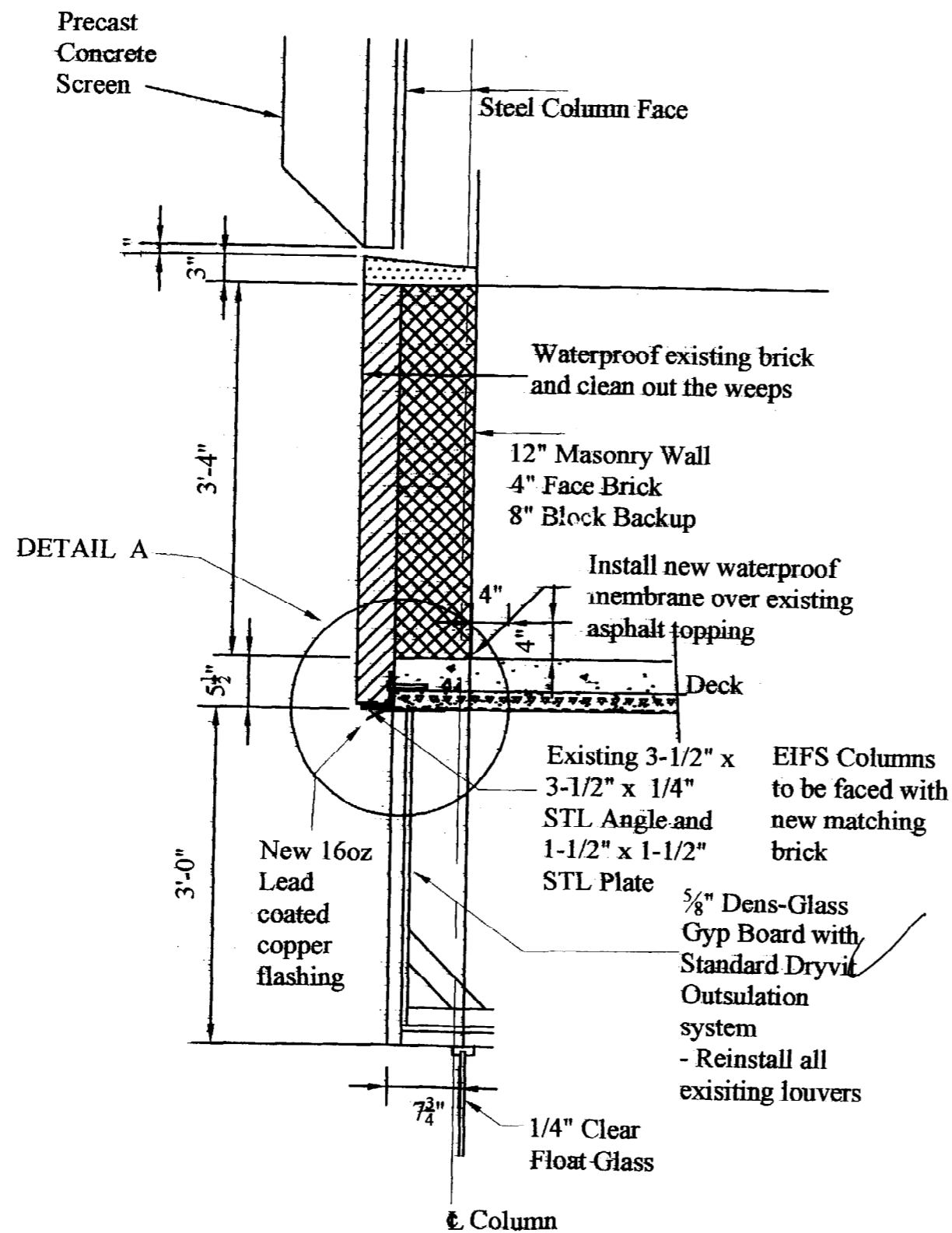
# TEMPLE STREET ELEVATION

Scale 1/8" = 1'-0"



# FEDERAL STREET ELEVATION

Scale 1/8" = 1'-0"



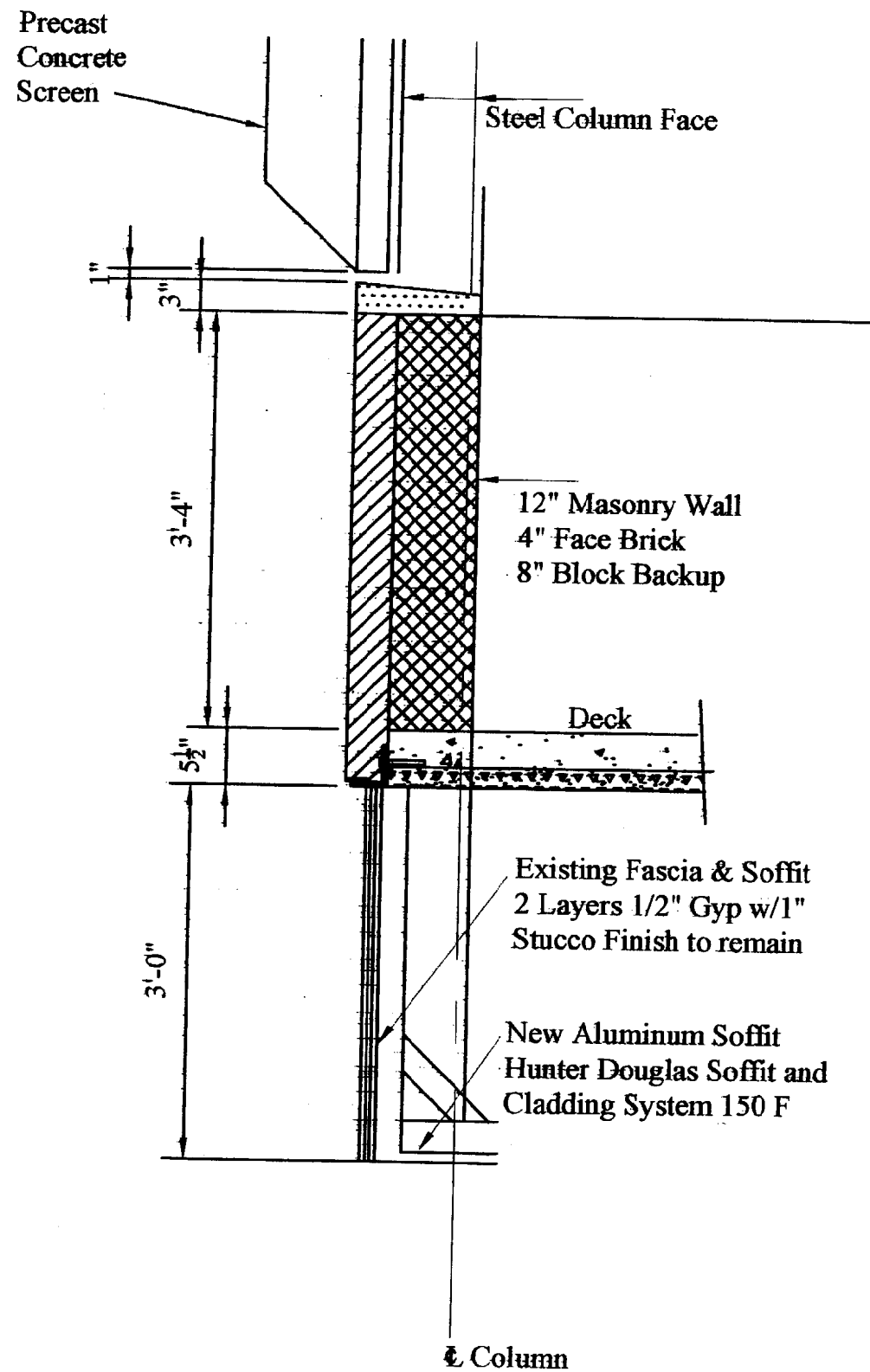
# City of Portland

389 Congress Street  
Portland, ME 04101

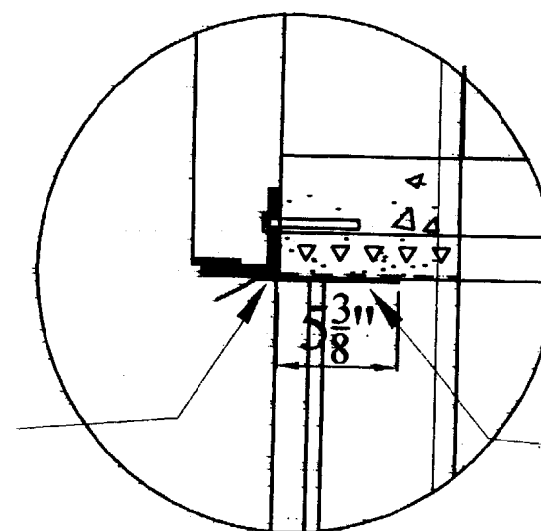


Renovation and Improvements to:

## Temple Street Garage



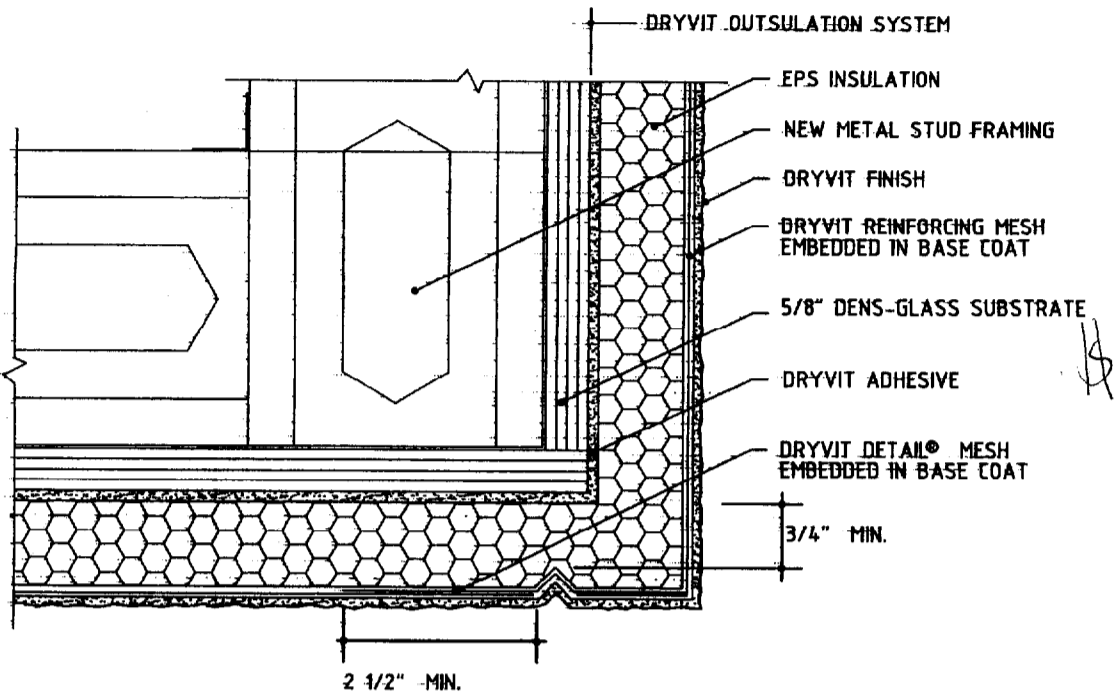
Apply mastic to top surface of flashing before installation prime & paint angle w/Tnemec paint



Saw cut 1/2" deep slot to create reglet for flashing, fold, and hammer in lead coated copper

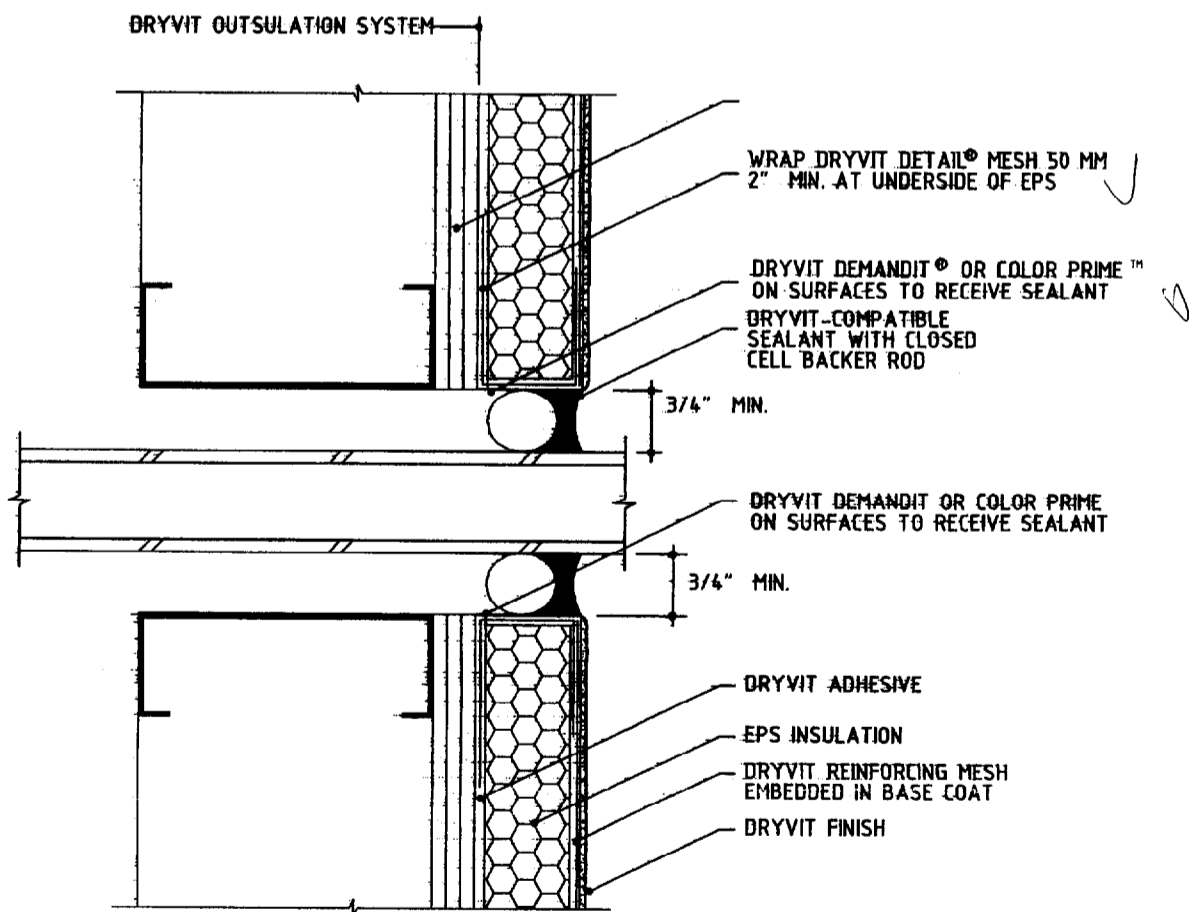
## DETAIL A

N.T.S.



# TEMPLE STREET

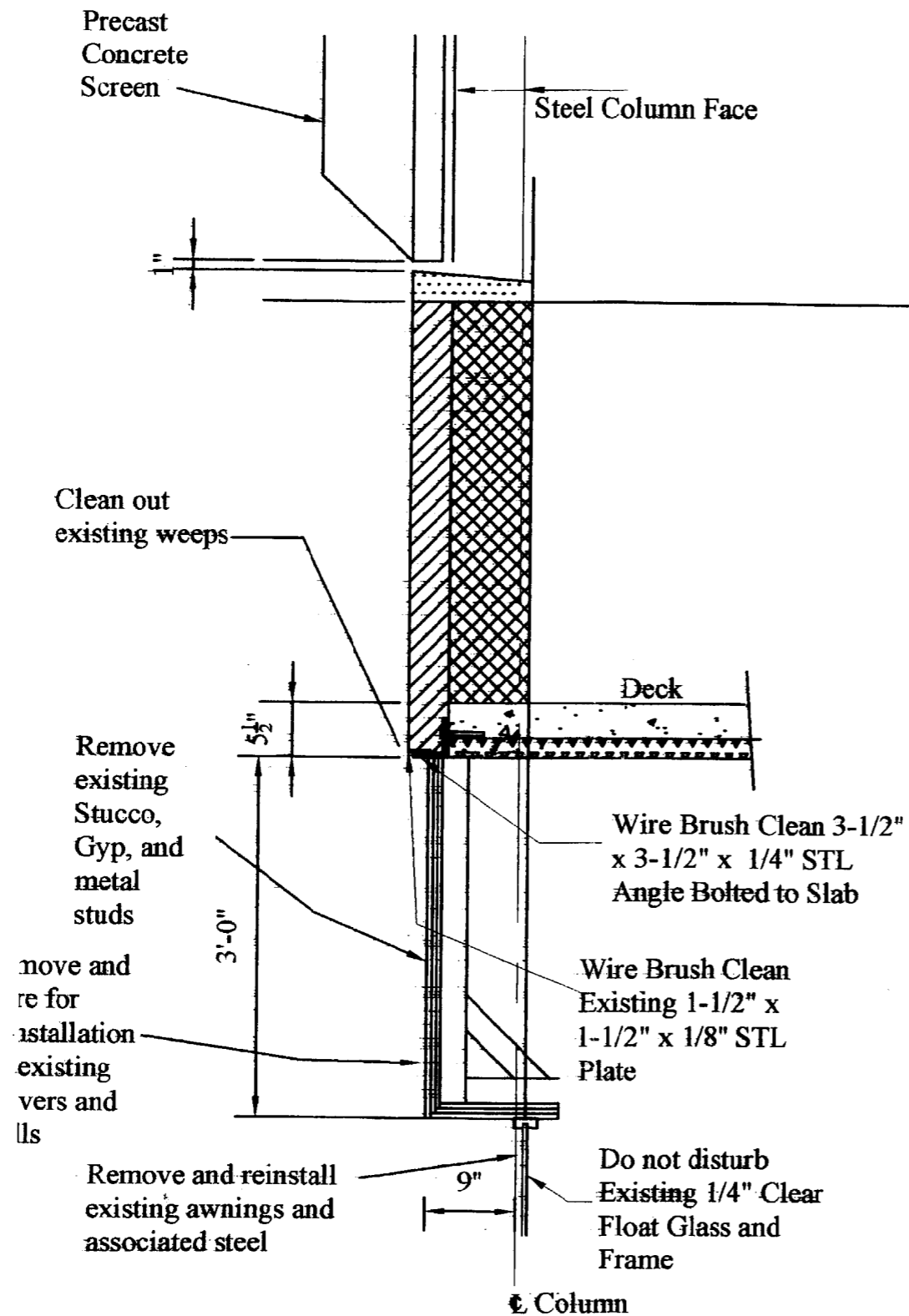
N.T.S.



# TEMPLE STREET

N.T.S.

FI



TEMPLE STREET SECTION 1/A-1  
DEMOLITION

Scale 3/4" = 1'-0"

Sheet Title:

DETAILS

Scale:

As Noted

Date:

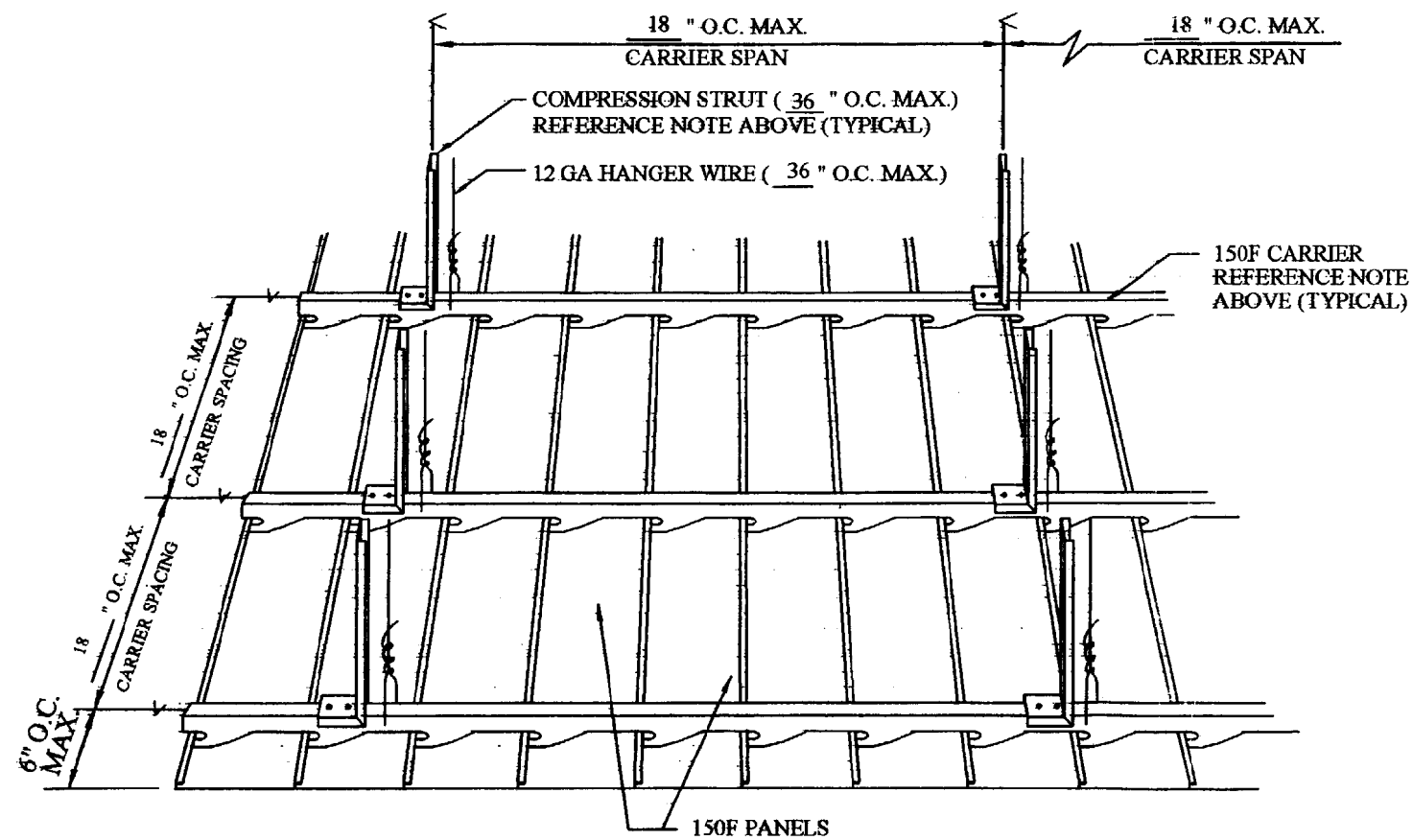
3/1/01

Drawing No.:

A2

THE WIND LOAD CHART BELOW IS BASED ON USING 3 OR MORE ROWS OF CARRIER, AND IS NOT VALID IF 150F PANEL IS ATTACHED TO LESS THAN 3 CARRIERS. MAXIMUM PANEL OVERHANG = 6". MAXIMUM CARRIER OVERHANG = 6".

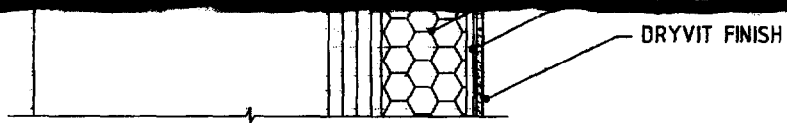
HANGER WIRE (MIN. 12 GA.) MUST BE LOCATED AT EACH COMPRESSION STRUT. COMPRESSION STRUT (1" 16 GA. CRS "C" CHANNEL SHOWN) MUST NOT EXCEED SPACING SHOWN BELOW. MAXIMUM STRUT LENGTH FOR 1" 16 GA. CRS "C" CHANNEL IS 28". HANGER WIRE AND COMPRESSION STRUT MUST BE ATTACHED TO STRUCTURE ABOVE TO SAFELY SUPPORT ALL LOADS IMPOSED BY SOFFIT SYSTEM.



## FEDERAL STREET CEILING

N.T.S.





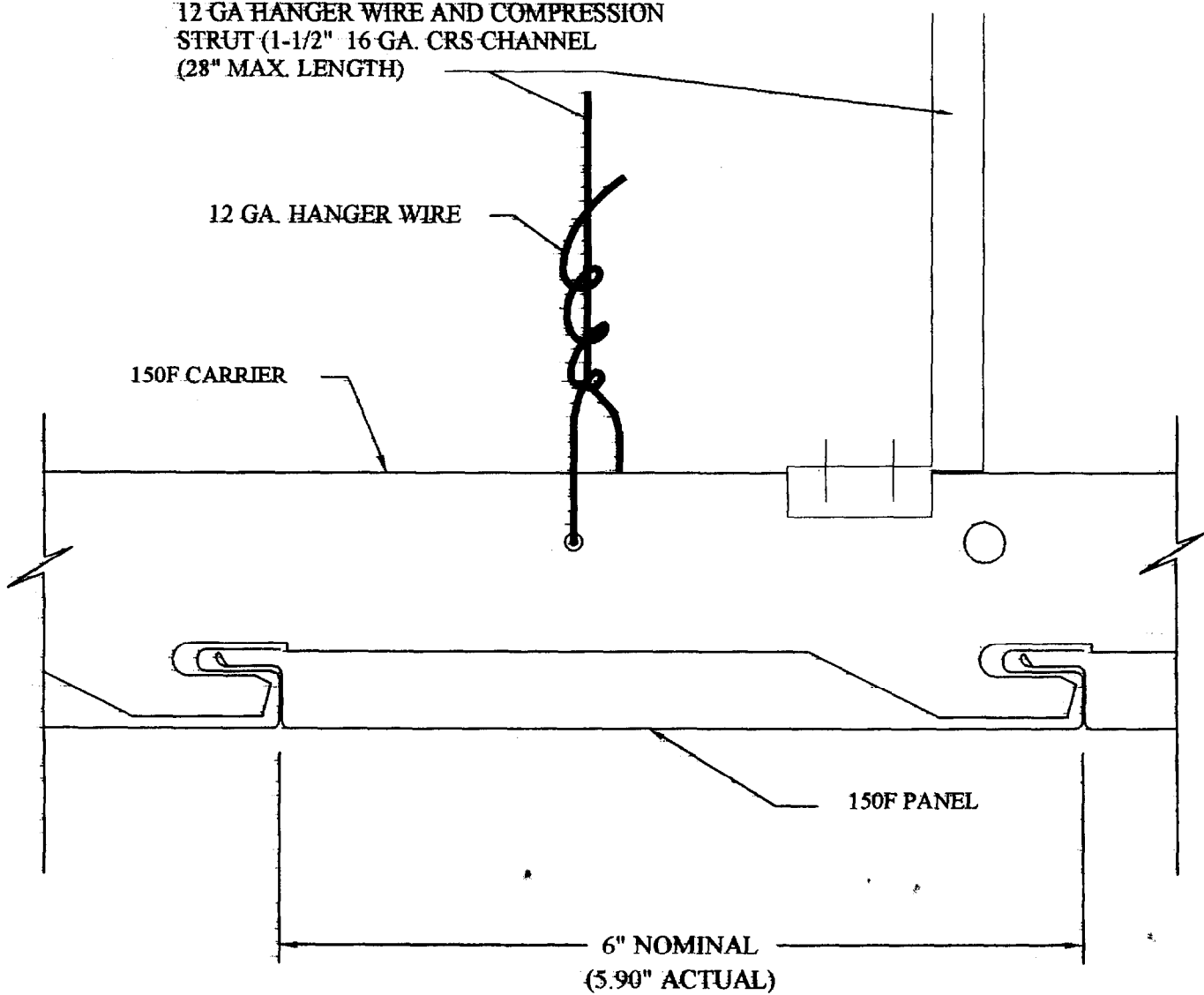
# TEMPLE STREET

N.T.S.

12 GA HANGER WIRE AND COMPRESSION  
STRUT (1-1/2" 16 GA. CRS CHANNEL  
(28" MAX. LENGTH)

12 GA. HANGER WIRE

150F CARRIER



150F PANEL

6" NOMINAL  
(5.90" ACTUAL)

# FEDERAL STREET CEILING

N.T.S.

um)

ck

re E  
-1/2  
gle

Bru:  
ng 1  
x 1

lot c  
ting  
t Gl  
e

HC

0"