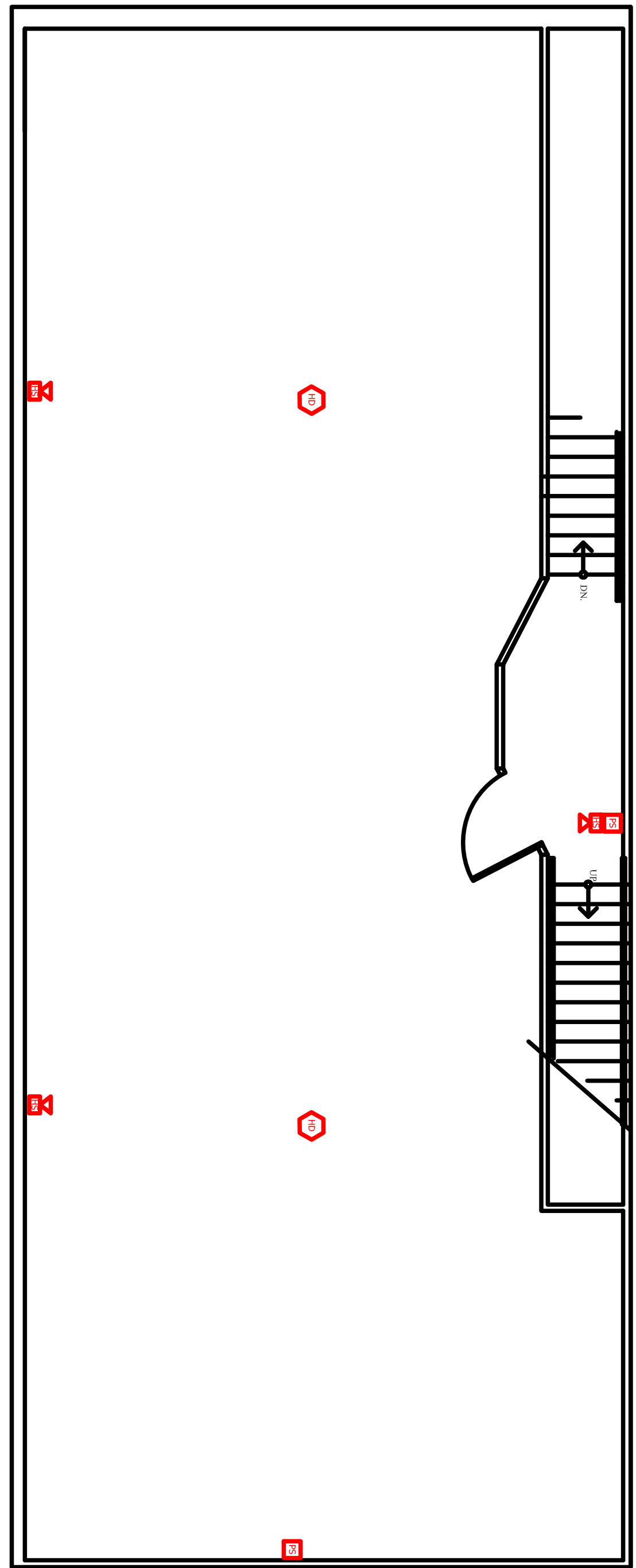
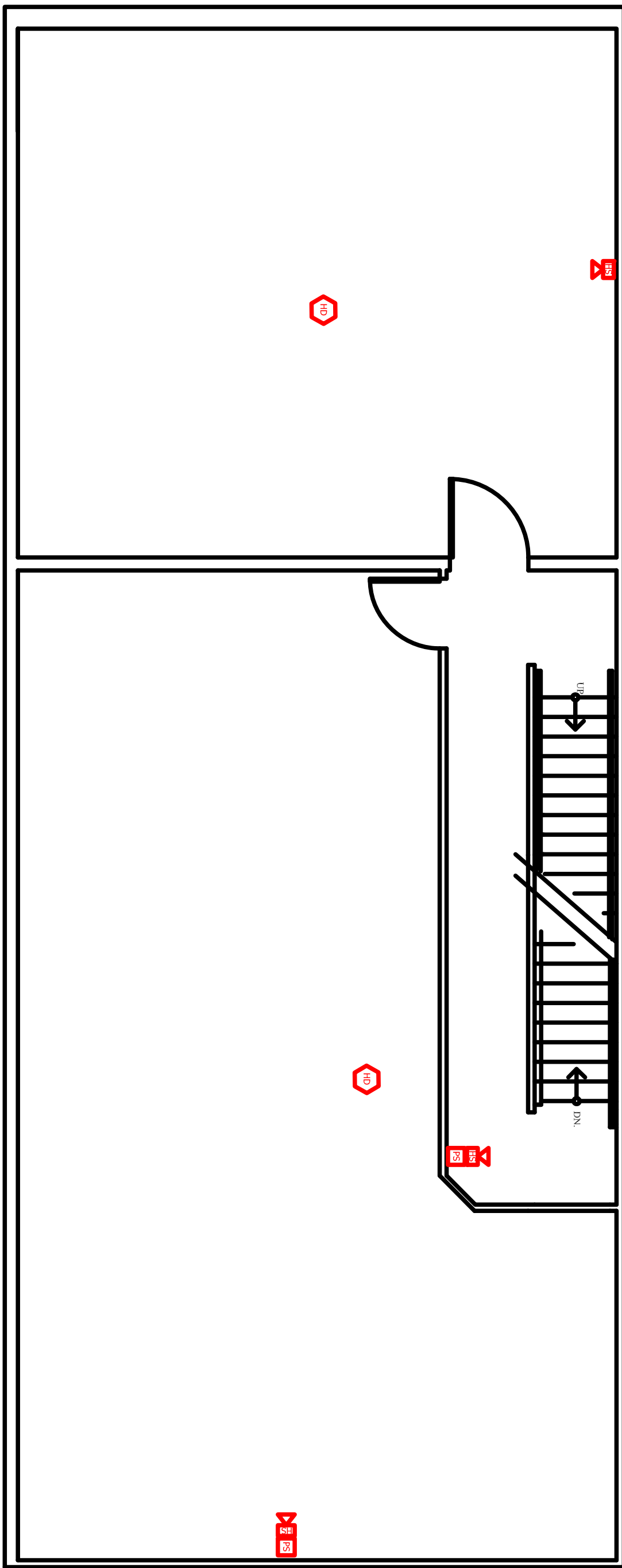


10 9 8 7 6 5 4 3 2 1

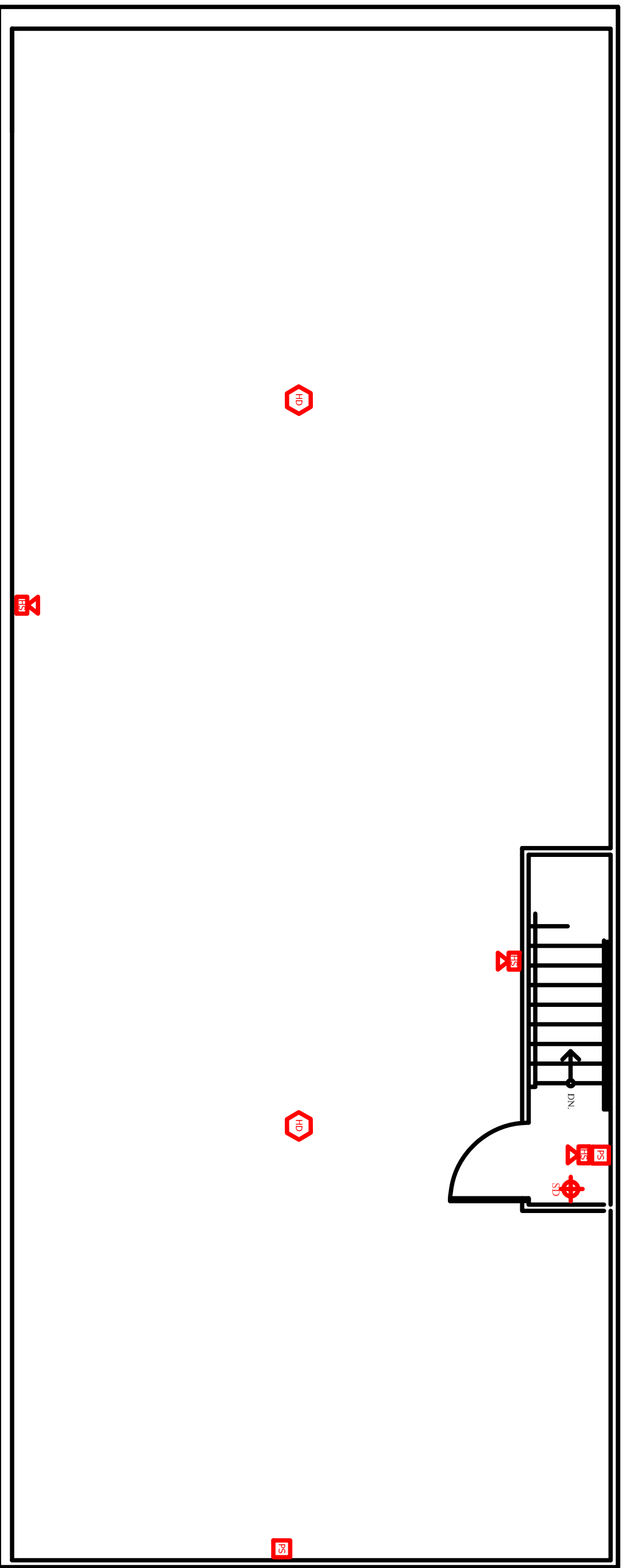
**SECOND FLOOR**









**THIRD FLOOR**



**FOURTH FLOOR**



**General Notes**  
 The document and all drawings, specifications, data, design concepts, workflow processes, information strategies, configurations and other information provided herein are the property of Securadyme Systems, Inc. and all rights are reserved. The recipient may not use, reproduce or disseminate the document or its contents except as necessary for the specific purposes contained within Securadyme Systems, Inc. The recipient may not create derivative works or use the information contained herein for any other purpose without the prior written permission of Securadyme Systems, Inc. Securadyme Systems, Inc. is not responsible for any errors or omissions in this document or drawings. Securadyme Systems, Inc. is not responsible for any errors or omissions in this document or drawings.

- FIRE ALARM LEGEND**
-  FIRE ALARM CONTROL PANEL
  -  PULL STATION
  -  HEAT DETECTOR
  -  SMOKE DETECTOR
  -  STROBE
  -  HORN STROBE

NO.	DATE	DESCRIPTION
REV. (5)	DATE (5)	REV. DESCRIPTION (5)
REV. (4)	DATE (4)	REV. DESCRIPTION (4)
REV. (3)	DATE (3)	REV. DESCRIPTION (3)
REV. (2)	DATE (2)	REV. DESCRIPTION (2)
REV. (1)	DATE (1)	REV. DESCRIPTION (1)



**NE-Region, Wilmington, MA Office**  
 100 Washington St., 3rd Floor  
 Wilmington, MA 01897  
 Phone: 978-688-4444  
 Fax: 978-688-9119

**NE-Region, Portland, ME Office**  
 100 Exchange St., 3rd Floor  
 Portland, ME 04101  
 Phone: 207-435-0277  
 Fax: 207-825-0244

**Client**  
 106 Exchange St.  
 Portland, ME.  
 04101

**Title**  
 Fire Alarm Layout  
 Basement and  
 1st floors

**Date** 5/12/2014 **Drawing Scale** 1/4"=1'  
**Drawn By** ZND **SSI Rep** KEVIN INMAN  
**Email Address** ZACHARY.DAVIS@SECURADYME.COM  
**Securadyme File Name** 5.12.2014\_TIMBER\_FOR\_CONSTRUCTION  
**Securadyme Quote/Proj No.** Sheet 2 OF 3  
 942408