

EQUIPMENT SCHEDULE:

EXHAUST HOOD - STAINLESS STEEL REAR DISCHARGE EXHAUST HOOD, 14', X 48" X 24" HIGH, WITH FULL LENGTH FILTER RACK, ALL WELDED GREASE SHELL, REMOVABLE GREASE CUP, AND UL LISTED BAFFLE FILTERS AND LIGHT FIXTURES.

EF-1 - 24" UPBLAST EXHAUST FAN WITH 1 HP, 120V, 2 SPEED MOTOR, 5600 CFM @ 2175 FPM IN A 20" X 20" WELDED 16 GA GALVANIZED DUCT. DUCT TO RUN UP THREE STORIES THROUGH A FIREPROOF SHAFT.

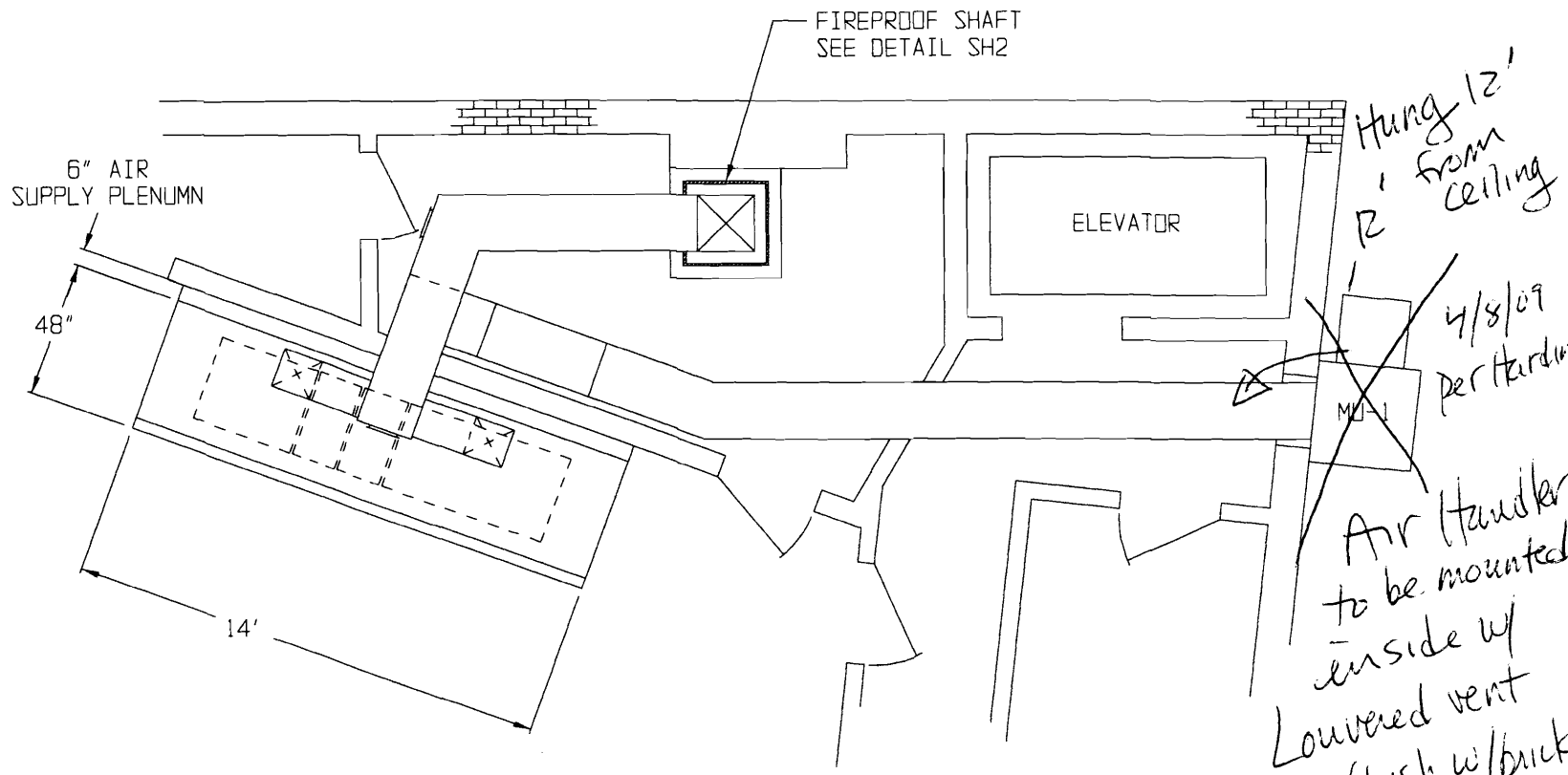
MU-1 - WALL MOUNTED MAKE-UP AIR SYSTEM WITH 15", 1 HP, 120 V, 2 SPEED BLOWER FAN IN A FILTERED HOUSING, WALL CURB, AND DUCTWORK TO OUTSIDE WALL. 4500 CFM = 85%

FIRE SUPPRESSION - A UL-300 FIRE SUPPRESSION SYSTEM WILL BE INSTALLED TO COVER THE HOOD, DUCT, AND APPLIANCES UNDER THE HOOD.

NOTE: UPON ACTIVATION OF THE FIRE SUPPRESSION SYSTEM, THE EXHAUST FANS SHALL REMAIN ON, AND THE SUPPLY SYSTEM, GAS FEED AND ELECTRICAL FEED TO ITEMS UNDER THE HOOD (INCLUDING LIGHTS) SHALL SHUT DOWN.

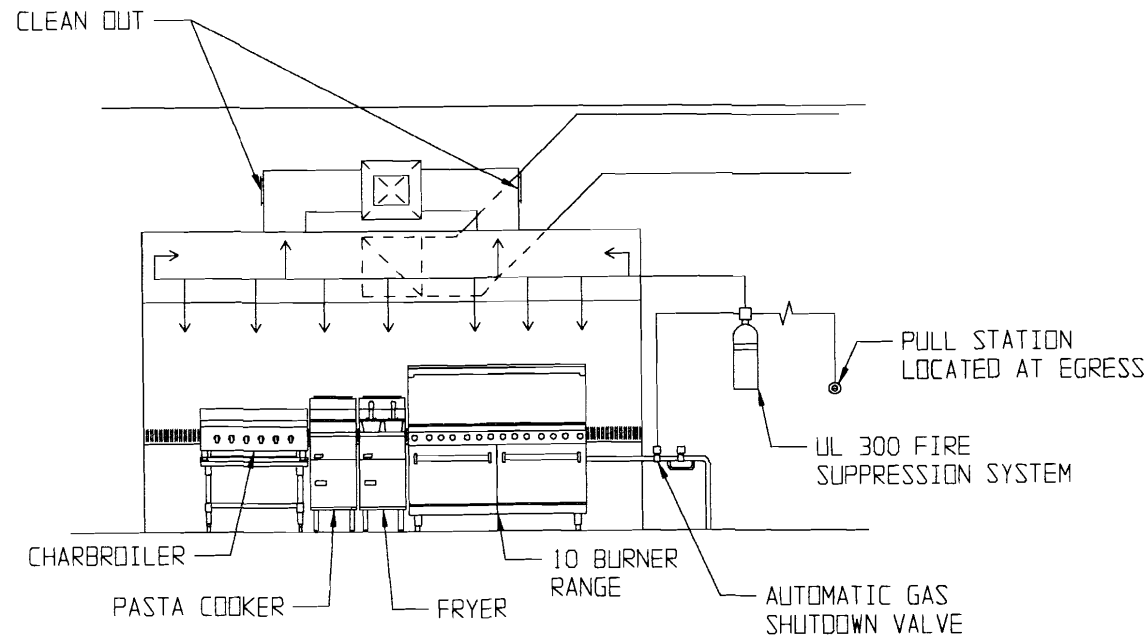
SYSTEM IS BUILT TO MEET NFPA 96 AND ALL LOCAL BUILDING CODES.

KG

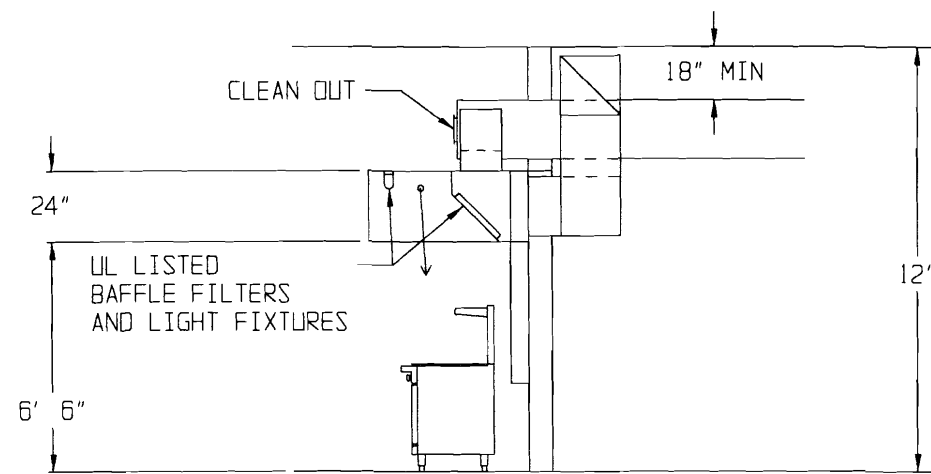


PLAN VIEW

Hung 12' from ceiling
4/8/09 per Harding
Air Handler to be mounted inside w/ lowered vent hole flush w/brick wall
No exterior visual projection
JMB

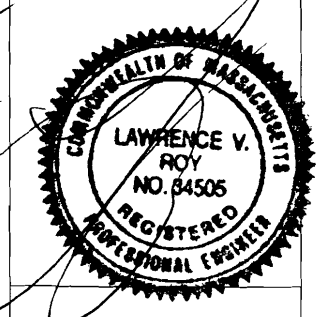


FRONT ELEVATION



SIDE ELEVATION

SCALE	3/16" = 1' 00"
DRN BY	T. SURETTE
DATE	MAR 05, 2009



JOB LOCATION
THE CORNER ROOM
 110 Exchange Street
 Portland, ME 04101

SEIDMAN BROS. INC.
 25 SIXTH STREET
 CHELSEA, MA 02150