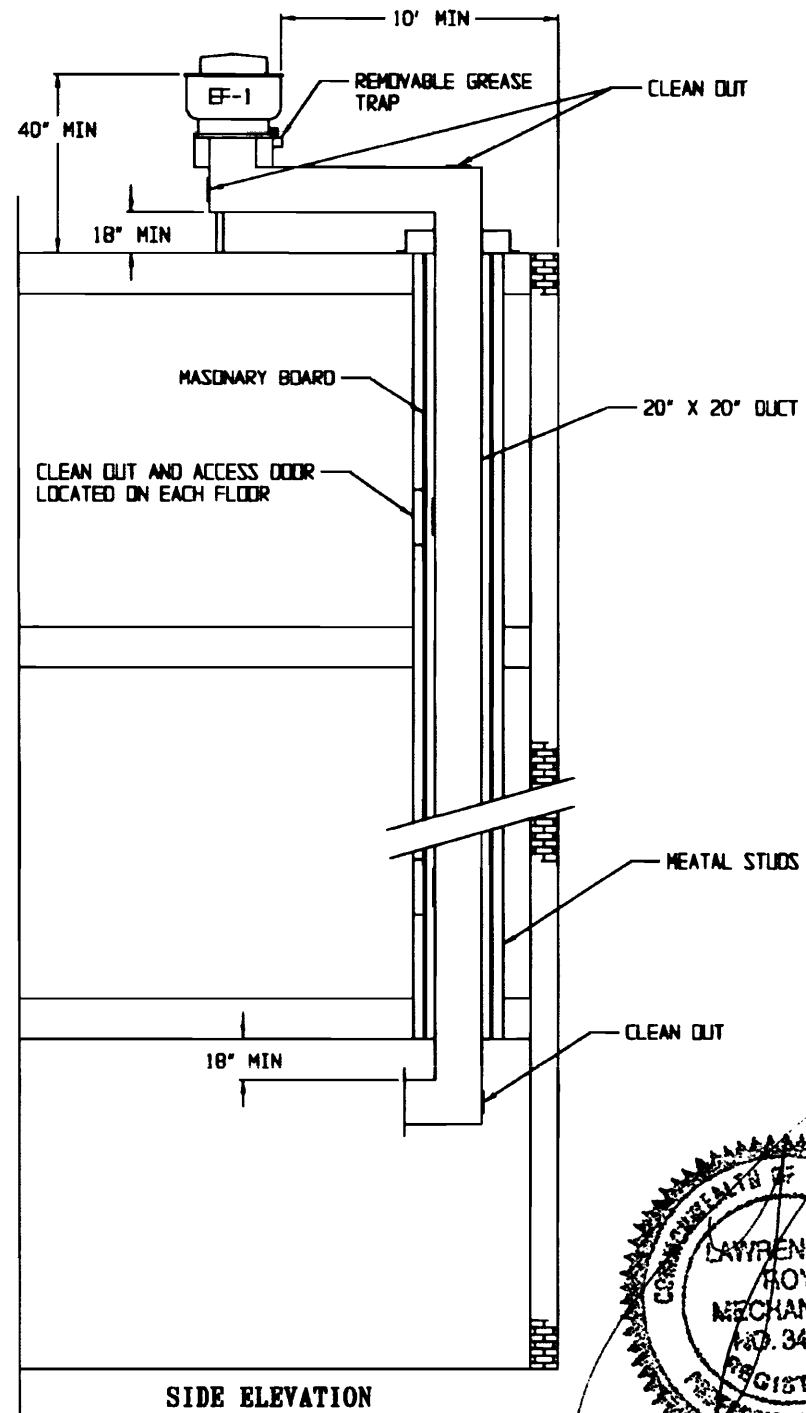


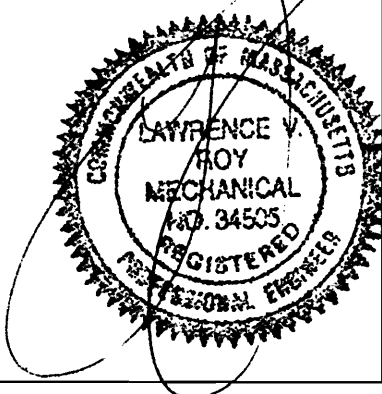
**FIREPROOF SHAFT  
DETAIL**

NON BEARING  
2 HR FIRE RATED PARTITION  
PER UL DESIGN U411

APR 22 2009



**SIDE ELEVATION**



**SEIDMAN BROS. INC.**  
25 SIXTH STREET  
CHELSEA, MA 02150

SCALE 3/16" = 1' 00"  
DRN BY T. SURETTE  
DATE MAR 05, 2009

JOB LOCATION  
**THE CORNER ROOM**  
110 Exchange Street  
Portland, ME 04101

1st Revision

**EQUIPMENT SCHEDULE:**

**EXHAUST HOOD** - STAINLESS STEEL REAR DISCHARGE EXHAUST HOOD, 14' X 48" X 24" HIGH, WITH FULL LENGTH FILTER RACK, ALL WELDED GREASE SHELL, REMOVABLE GREASE CLIP, AND UL LISTED BAFFLE FILTERS AND LIGHT FIXTURES.

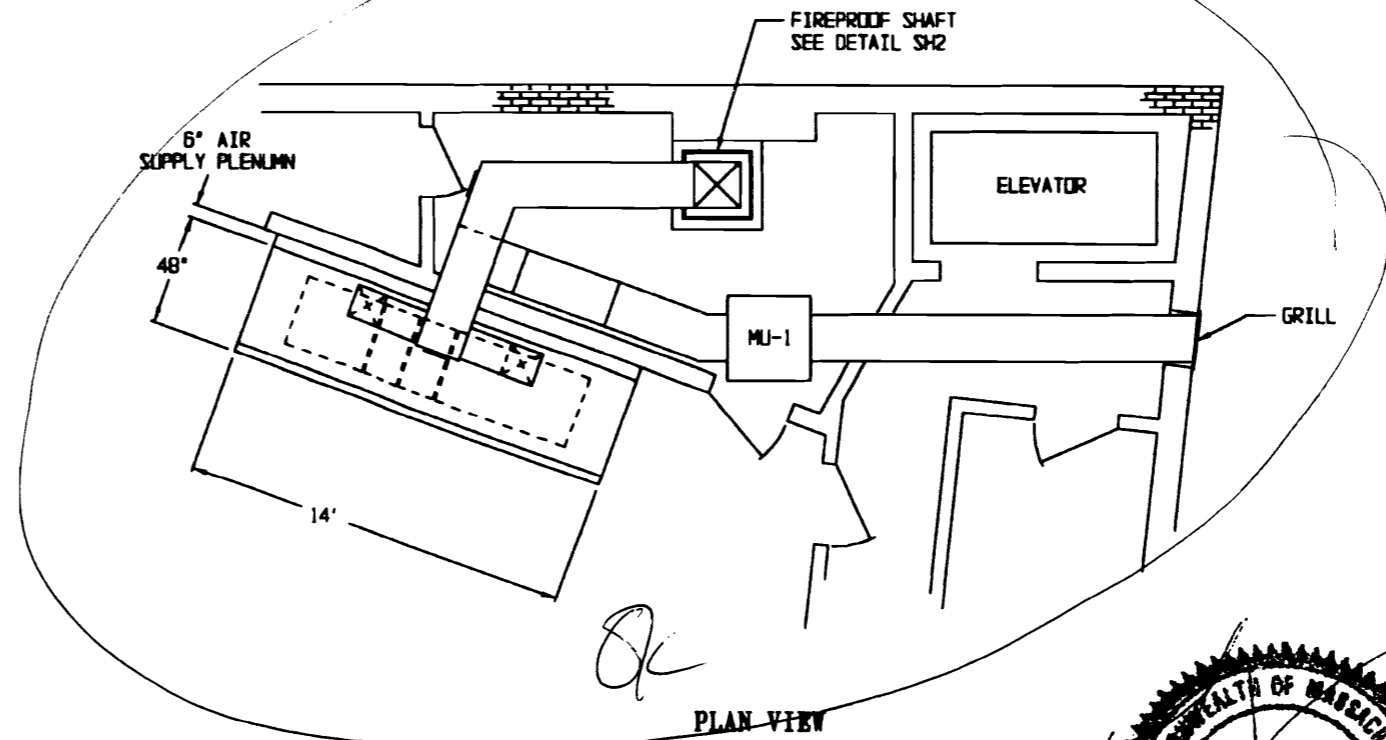
**EF-1** - 24" UPBLAST EXHAUST FAN WITH 1 HP, 120V, 2 SPEED MOTOR, 5600 CFM @ 2175 FPM IN A 20" X 20" WELDED 18 GA GALVANIZED DUCT, DUCT TO RUN UP THREE STORIES THROUGH A FIREPROOF SHAFT.

**MU-1** - WALL MOUNTED MAKE-UP AIR SYSTEM WITH 15", 1 HP, 120 V, 2 SPEED BLOWER FAN IN A FILTERED HOUSING, WALL CURB, AND DUCTWORK TO OUTSIDE WALL. 4500 CFM @ 85Z.

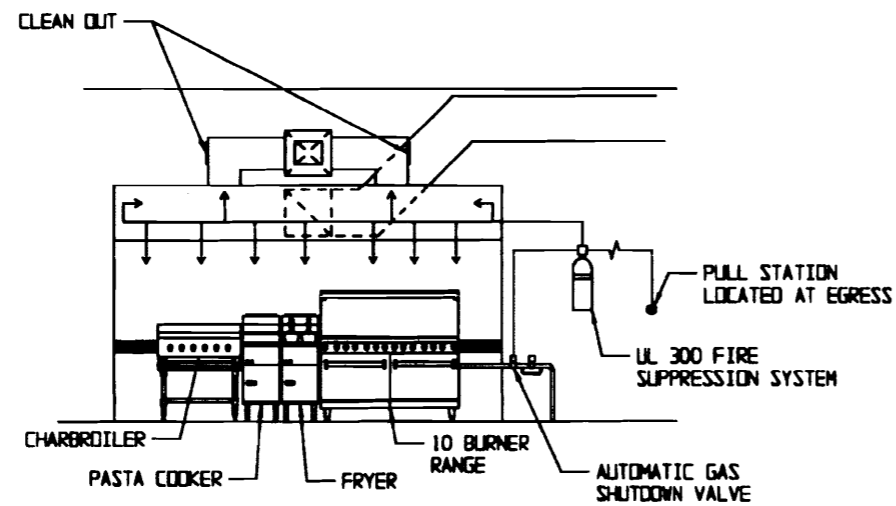
**FIRE SUPPRESSION** - A UL-300 FIRE SUPPRESSION SYSTEM WILL BE INSTALLED TO COVER THE HOOD, DUCT, AND APPLIANCES UNDER THE HOOD.

**NOTE:** UPON ACTIVATION OF THE FIRE SUPPRESSION SYSTEM, THE EXHAUST FANS SHALL REMAIN ON, AND THE SUPPLY SYSTEM, GAS FEED AND ELECTRICAL FEED TO ITEMS UNDER THE HOOD (INCLUDING LIGHTS) SHALL SHUT DOWN.

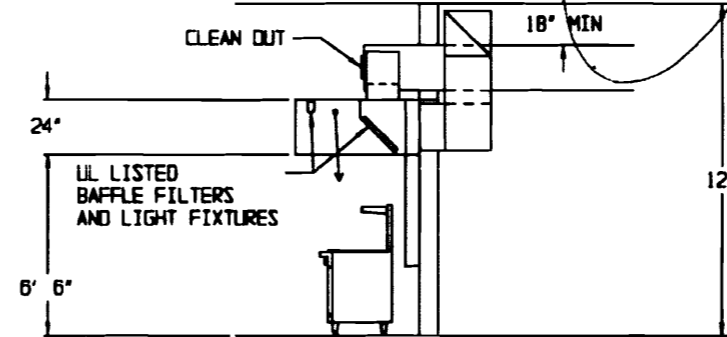
SYSTEM IS BUILT TO MEET NFPA 96 AND ALL LOCAL BUILDING CODES.



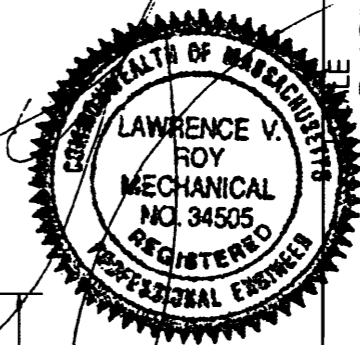
PLAN VIEW



FRONT ELEVATION



SIDE ELEVATION



**SEIDMAN BROS. INC.**  
25 SIXTH STREET  
CHELSEA, MA 02150

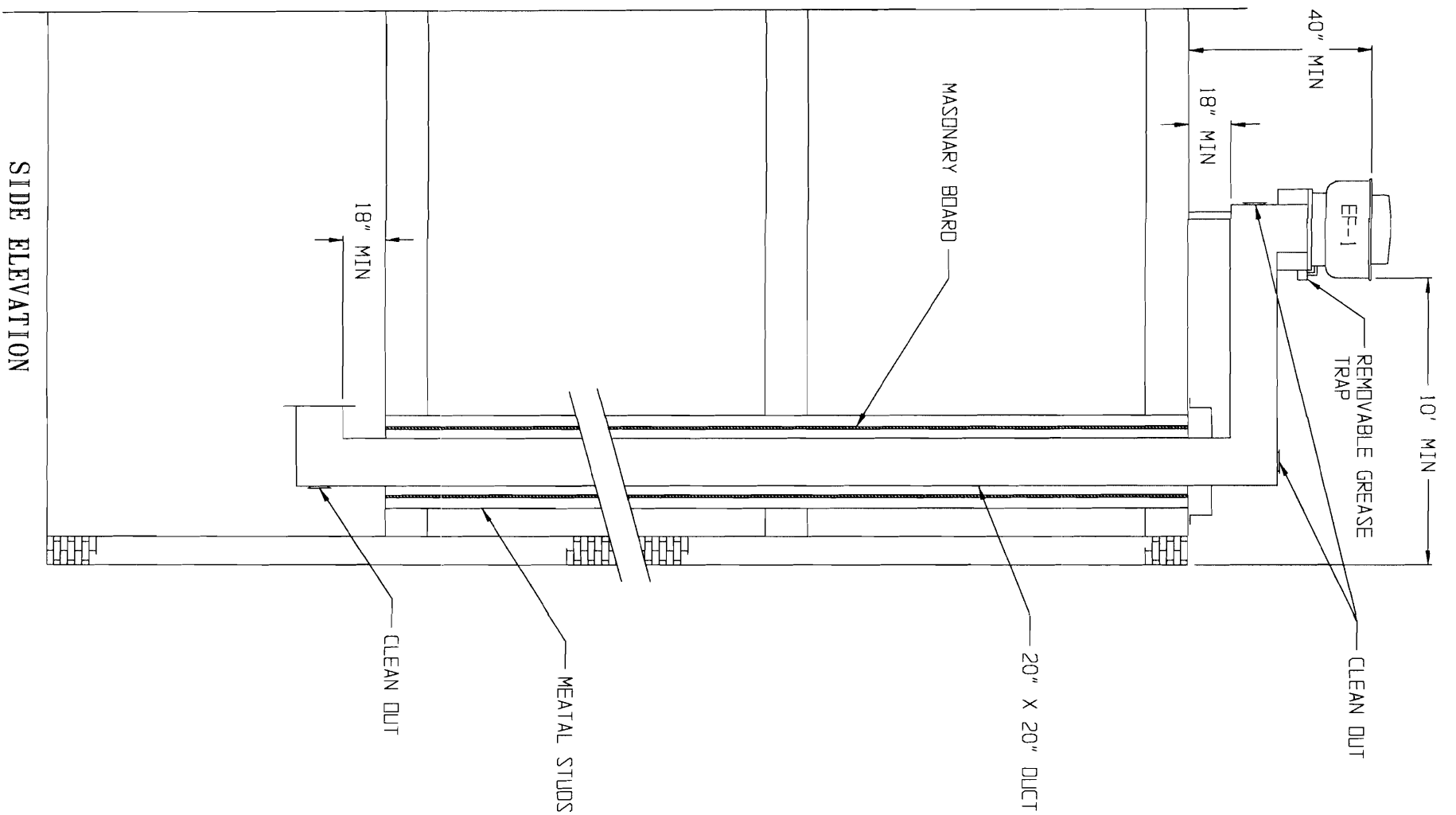
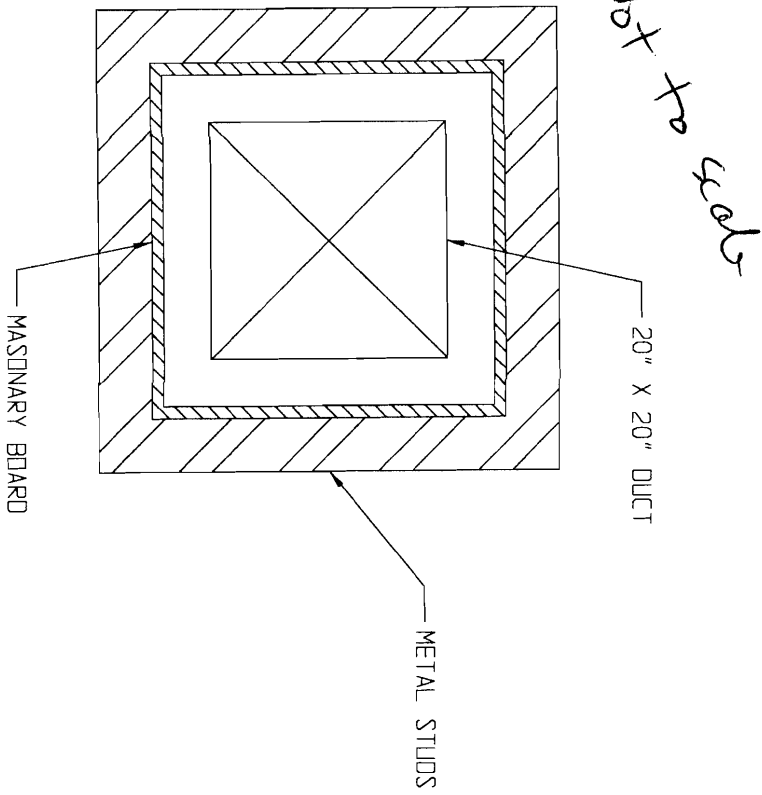
SCALE 3/16" = 1' 00"  
DRN BY T. SURETTE  
DATE MAR 05, 2009

JOB LOCATION  
**THE CORNER ROOM**  
110 Exchange Street  
Portland, ME 04101

APR 22 2009

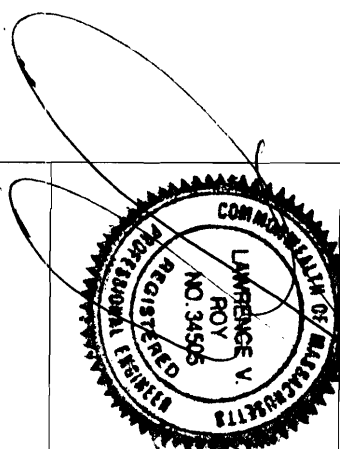
1st Revision

FIREPROOF SHAFT  
DETAIL



JOB LOCATION

THE CORNER ROOM  
110 Exchange Street  
Portland, ME 04101



SCALE

3/16" = 1' 00"

DRAWN BY

T. SURETTE

DATE

MAR 05, 2009

**SEIDMAN** BROS. INC.

25 SIXTH STREET  
CHELSEA, MA 02150

EQUIPMENT SCHEDULE:

EXHAUST HOOD - STAINLESS STEEL REAR DISCHARGE EXHAUST HOOD, 14' X 48" X 24" HIGH, WITH FULL LENGTH FILTER RACK, ALL WELDED GREASE SHELL, REMOVABLE GREASE CUP, AND UL LISTED BAFFLE FILTERS AND LIGHT FIXTURES.

EF-1 - 24" UPBLAST EXHAUST FAN WITH 1 HP, 120V, 2 SPEED MOTOR, 5600 CFM @ 2175 FPM IN A 20" X 20" WELDED 16 GA GALVANIZED DUCT, DUCT TO RUN UP THREE STORIES THROUGH A FIREPROOF SHAFT.

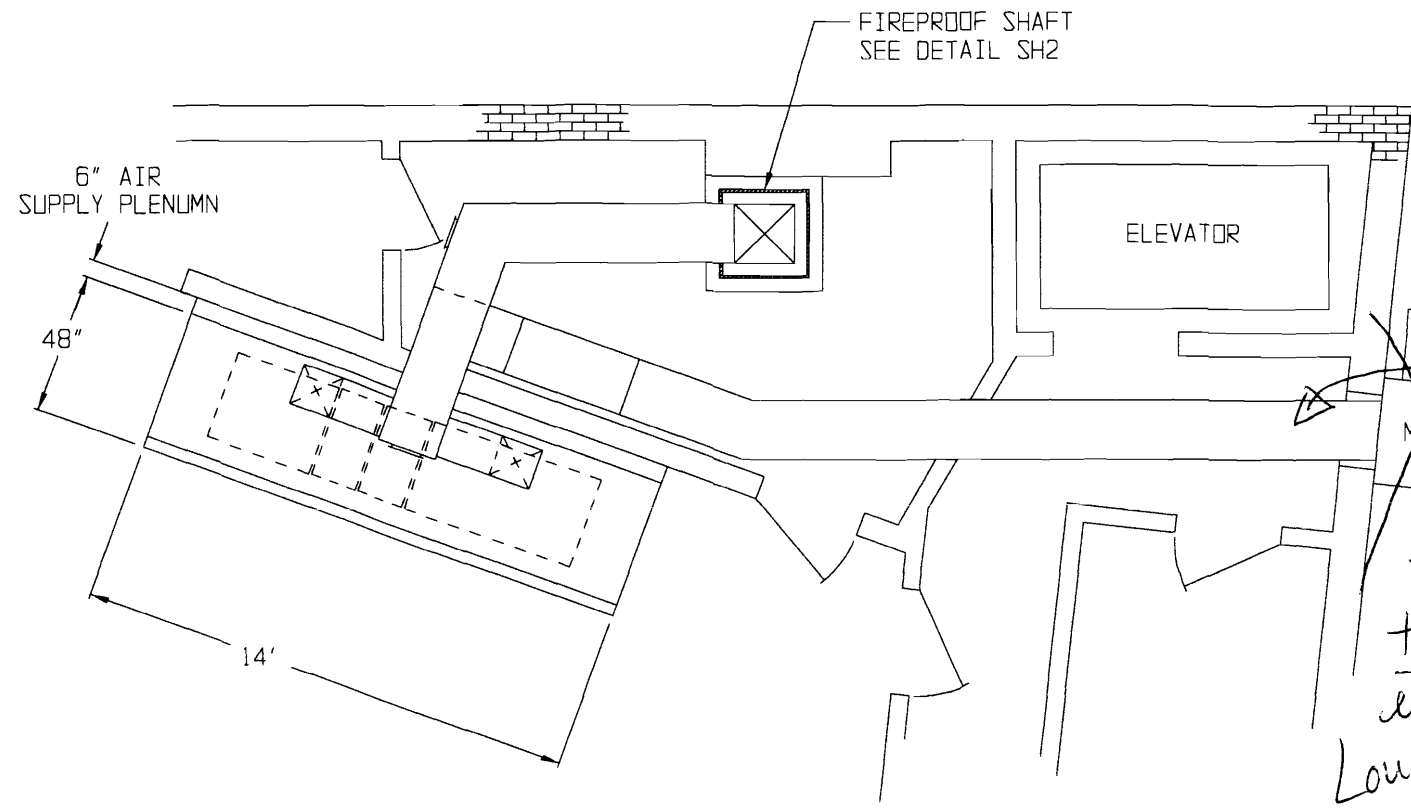
MU-1 - WALL MOUNTED MAKE-UP AIR SYSTEM WITH 15", 1 HP, 120 V. 2 SPEED BLOWER FAN IN A FILTERED HOUSING, WALL CURB, AND DUCTWORK TO OUTSIDE WALL. 4500 CFM = 85%

FIRE SUPPRESSION - A UL-300 FIRE SUPPRESSION SYSTEM WILL BE INSTALLED TO COVER THE HOOD, DUCT, AND APPLIANCES UNDER THE HOOD.

NOTE: UPON ACTIVATION OF THE FIRE SUPPRESSION SYSTEM, THE EXHAUST FANS SHALL REMAIN ON, AND THE SUPPLY SYSTEM, GAS FEED AND ELECTRICAL FEED TO ITEMS UNDER THE HOOD (INCLUDING LIGHTS) SHALL SHUT DOWN.

SYSTEM IS BUILT TO MEET NFPA 96 AND ALL LOCAL BUILDING CODES.

KG

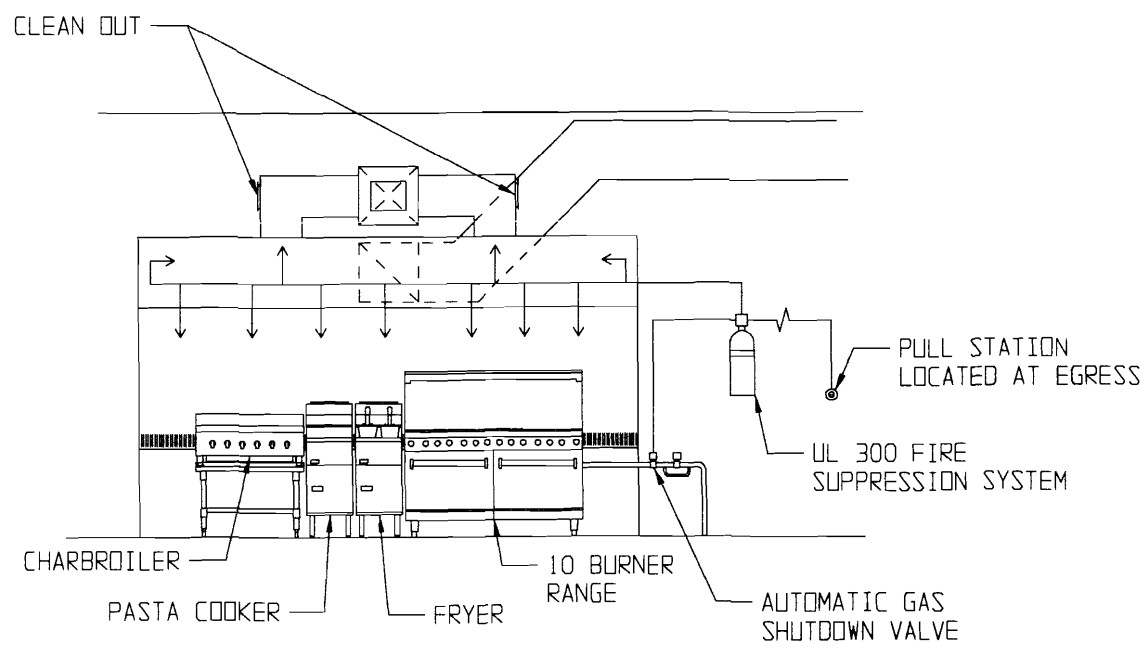
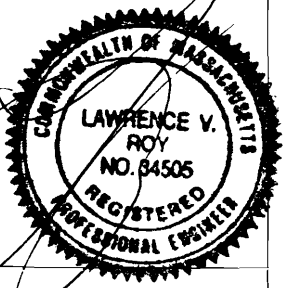


PLAN VIEW

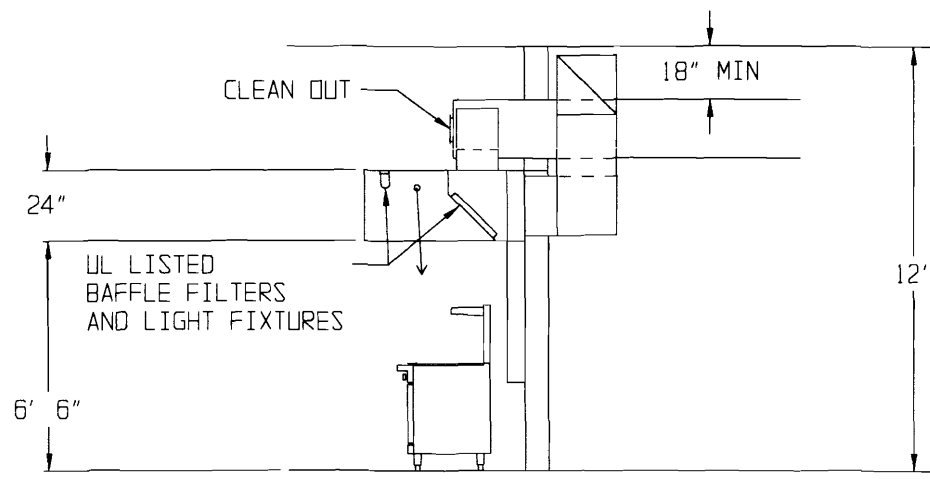
*Handwritten notes:*  
 Hung 12' from ceiling  
 4/8/09 per Harding  
 Air Handler to be mounted inside w/ lowered vent hole flush w/ brick wall  
 No exterior visual projection  
 JMB

SEIDMAN BROS. INC.  
 25 SIXTH STREET  
 CHELSEA, MA 02150

SCALE 3/16" = 1' 00"  
 DRN BY T. SURETTE  
 DATE MAR 05, 2009



FRONT ELEVATION



SIDE ELEVATION

JOB LOCATION  
 THE CORNER ROOM  
 110 Exchange Street  
 Portland, ME 04101