

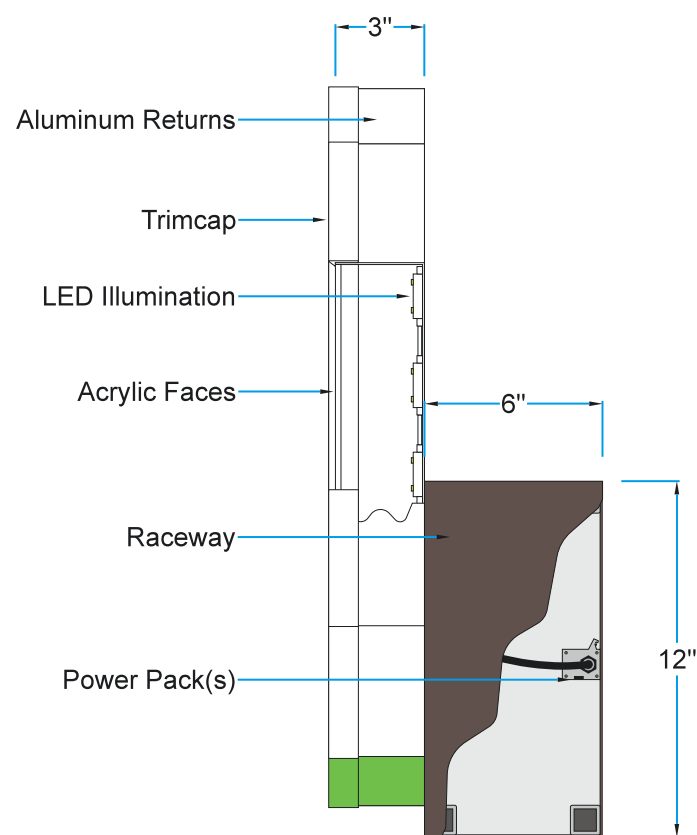
E1 Elevation: (Qty: 1) #8692 Face Illuminating Channel Letters & Icon
 24" x 61-11/16" = 10.2 Sq. Ft.

Description:
 (Qty: 1) Face illuminating channel letters & logo icon on raceway/wire housing.
Raceway/Wire Housing:
 * Welded 1" square aluminum tube frame
 * Painted aluminum returns & finished back
 * Note: Service from top
Channels:
 * Aluminum returns
 * White Acrylic faces, Icon has translucent vinyl on face, digitally printed on Oracal trans vinyl with laminate
 * LED illumination
 * Mounted flush to raceway

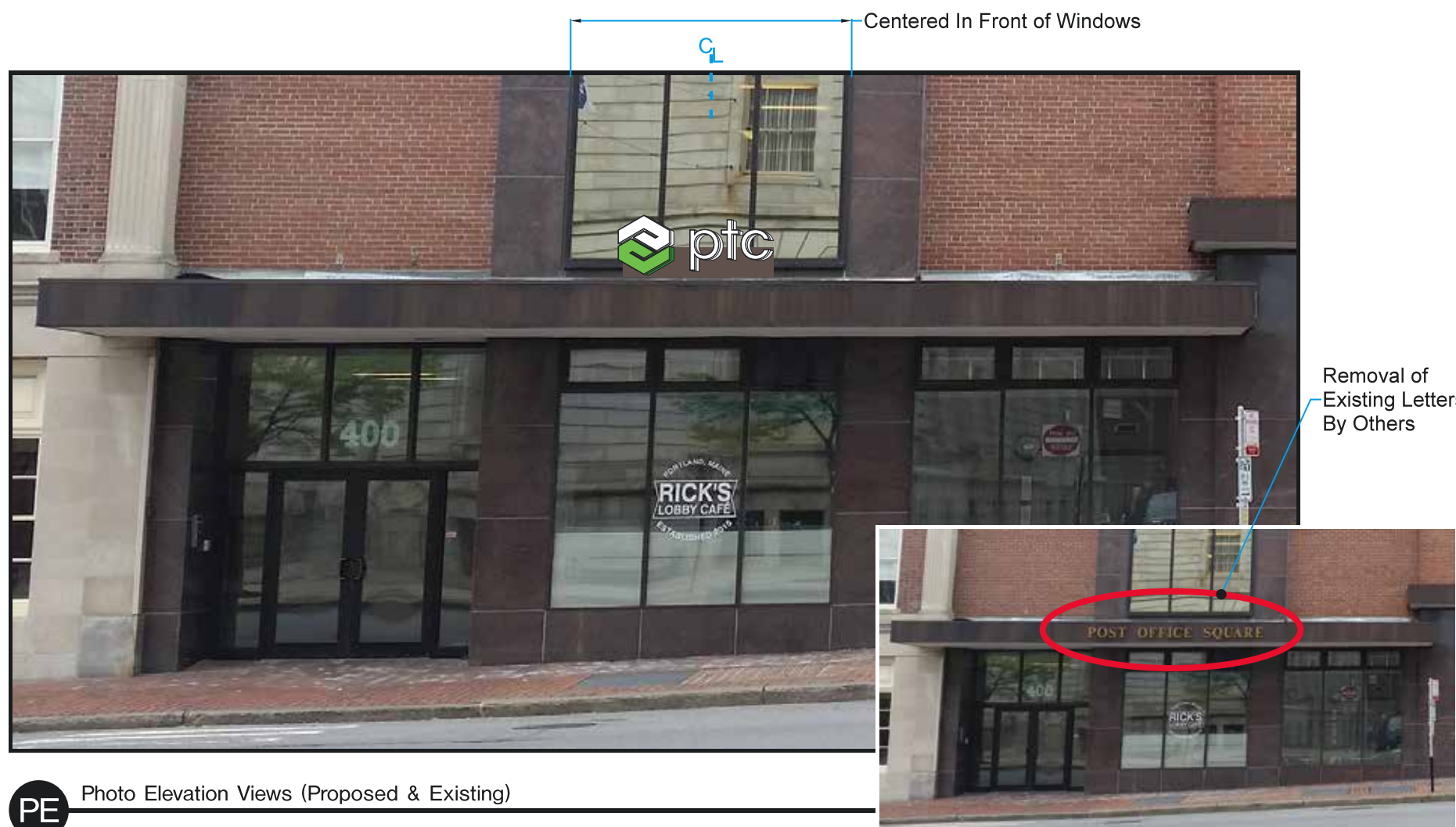
Typeface/Logo:
 * Art on File

Colors:
 * Raceway - Painted Duranodic #313-E (face, back & returns) (Match Provided Sample)
 * Channel Returns - Stock White Aluminum (letters)
 * Faces - Painted Green PMS #360c (icon)
 * Vinyl Graphics - White Acrylic
 * Trimcap - Printed Green PMS #360c
 * LEDs - Stock White (letters)
 * LEDs - Painted Green PMS #360c (icon)
 * LEDs - White

Installation:
 * By ViewPoint
 * Note: Power by Others
 * This sign is intended to be installed in accordance with the requirements of Article 600 of the National Electrical Code (NEC) and/or other applicable Local Electrical Codes (LEC). This includes proper grounding and bonding of the sign.



S1 Side Detail View



PE Photo Elevation Views (Proposed & Existing)

Job: PTC
 Location: 400 Congress St., Portland, ME
 Account Manager: Keith Dubois
 File: PTC PortlandME congress halo 3a.plt
 Date: 02.01.18 DI.5
 Designer: Pete Rivera
 Revisions: | Revisions:

ViewPoint
 SIGN AND AWNING
 1.508.393.8200
 FAX 1.508.393.4244

Customer Approval | Acct. Manager Approval | Production Approval