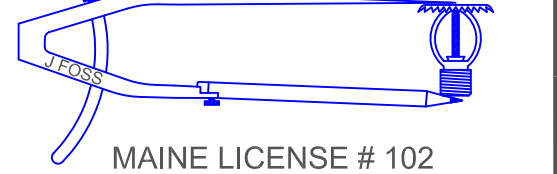


**HIGH TECH  
FIRE PROTECTION**

P.O. BOX 156  
MINOT, ME. 04258-0258  
TEL: (207) 998-2551 FAX: (207) 998-4187



MAINE LICENSE # 102

ARCHITECT:

CONTRACTOR:

- LEGEND:**
- RN PIPE RISER UP
  - DN PIPE RISER DOWN
  - STEEL PIPE
  - △ WET SYSTEM RISER
  - HYDRAULIC CALC. POINT
  - [x-x] PIPE ELEVATION A.F.F.

**DESIGN NOTES:**

\*ALL PIPING 1 1/2" AND LARGER TO BE SCHEDULE 10 STEEL W/ GROOVED FITTING.  
\*ALL PIPING 1 1/4" AND SMALLER TO BE SCHEDULE 40 STEEL WITH THREADED FITTING.

\*POSITION, LOCATION, SPACING, AND USE OF SPRINKLERS AND HANGERS SHALL BE IN ACCORDANCE WITH NFPA 13 2010 ed.

\*ALL ELECTRICAL WORK TO BE DONE BY OTHERS.

\*DIMENSIONS AND LOCATIONS GIVEN FOR SPRINKLER HEADS AND PIPE MAY VARY TO ACCOMMODATE ACTUAL FIELD CONDITIONS.

\*OWNER TO PROVIDE SUFFICIENT HEAT TO PREVENT FREEZING IN WATER FILLED SPRINKLER PIPE AND EQUIPMENT.

\*OTHER TRADES TO COORDINATE THEIR WORK WITH SPRINKLER CONTRACTOR.

\*ALL NEWLY INSTALLED SPRINKLER HEADS ARE TO BE QUICK RESPONSE U.N.O.

\*OWNER IS RESPONSIBLE FOR MAINTAINING THE SPRINKLER SYSTEMS IN ACCORDANCE WITH THE CURRENT EDITION OF NFPA 25.

\*INSPECTIONS TESTING AND MAINTENANCE OF WATER BASED FIRE PROTECTION SYSTEMS AND/OR ALL APPLICABLE FEDERAL, STATE, AND LOCAL LAWS, CODES AND ORDINANCES.

GLOBE®  
MODEL GL5601  
79 / 155°  
K=5.6

1/2" SEMI RECESSED WHITE PENDENT  
(225 SQ. FT. SPACING - LIGHT)  
(130 SQ. FT. SPACING - ORD.)

\* OR APPROVED EQUAL

TOTAL HEADS ON SHEET: 83

SCALE: 1/8" = 1'-0"

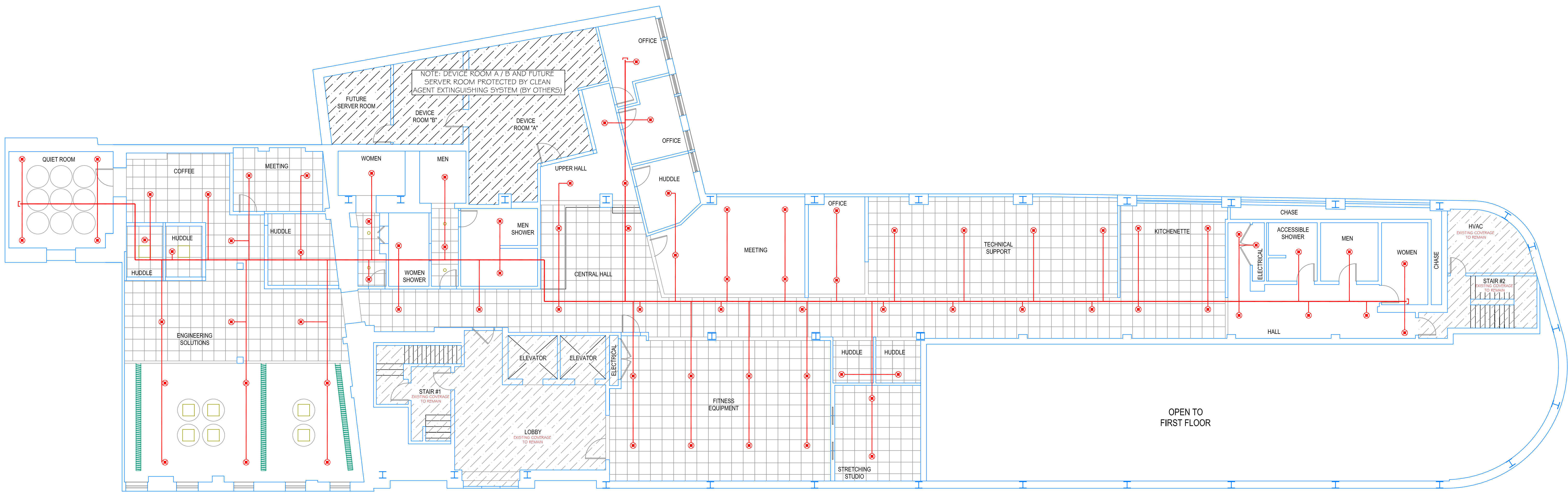
DATE: OCTOBER 13, 2014

DESIGNER: JEREMY A. FOSS  
MAINE RMS #808  
NICET LEVEL III CERT. #126801  
CHECKED BY: E. POLULIN (RMS# 515)  
NICET LEVEL IV CERT. # 108534

LOCATION:  
400 CONGRESS ST.  
PORTLAND, ME

DRAWING TITLE:  
**KEPWARE  
FIT - UP  
(2ND FLOOR)**  
FIRE PROTECTION PLAN  
(NFPA 13 2010 ed.)

DRAWING NO.:  
**FP-1.1**



**SECOND FLOOR PLAN**  
SCALE: 1/8" = 1'-0"  
PROTECTED AREA: 111,320 SQ. FT.