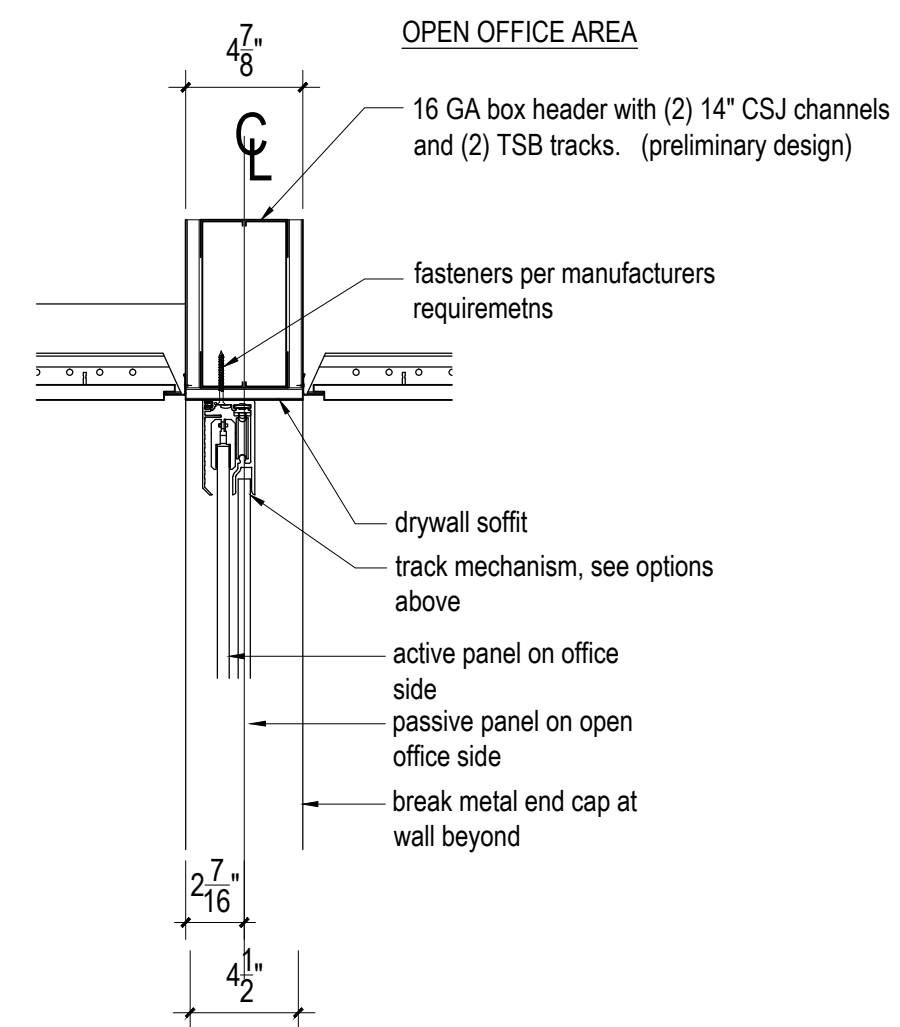
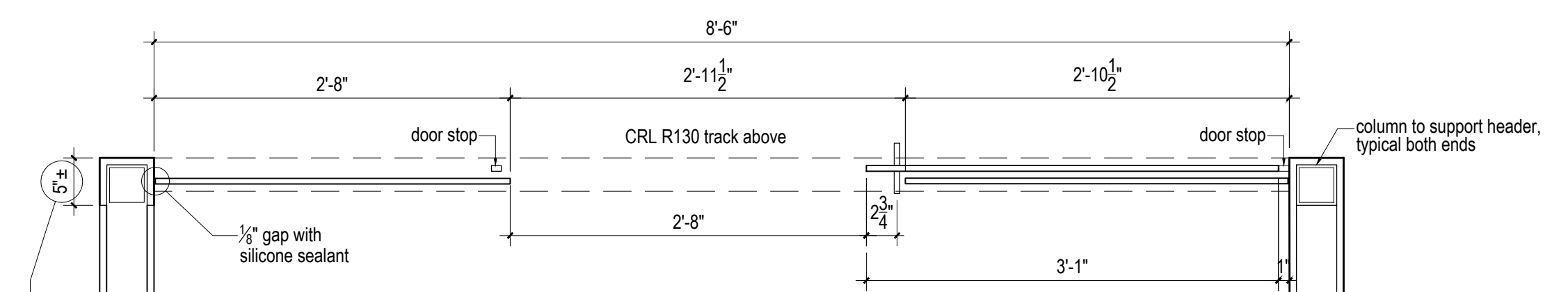


**C** Plan Detail at end wall cap  
3" = 1'-0"

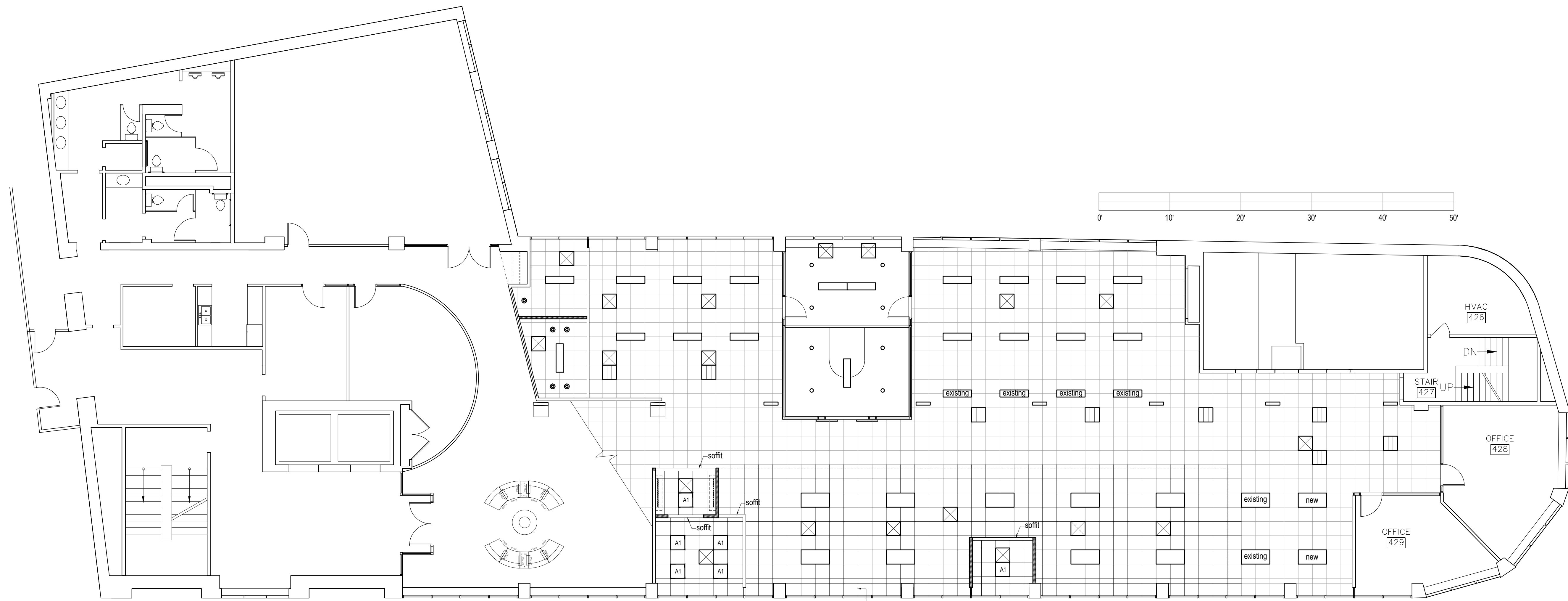


**B** Head Detail at Sliding Glass Doors  
1 1/2" = 1'-0"



NOTE: Provide minimum 32" CLEAR opening. Adjust exact width of side panels as required. 32" opening shall be centered on 8'-6" width as closely as possible.

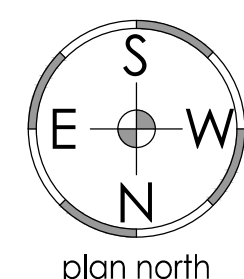
**A** Plan Detail at Sliding Glass Doors  
1" = 1'-0"



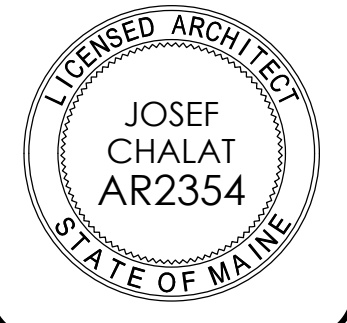
**LEGEND**  
 D-01 remove existing gypsum board partition wall  
 D-02 remove existing storefront frame and gypsum board soffit above  
 W-01 New gypsum board partition wall, 6" above ceiling line

**1** 4th Floor Ceiling Plan: existing ceiling with new plan  
1/8" = 1'-0"

existing fixture to remain  
 existing existing fixture relocated from elsewhere  
 new new fixture, to match existing  
 HVAC supply register: HVAC Services to determine new and additional locations for supply and return registers and coordinate with architect



**AZIMUTH LLC**  
 josef chalat  
 architect  
 327 ocean house road  
 Cape Elizabeth, Maine  
 office 207 799 0404  
 cell 207 318 3234  
 e: azimuth@maine.rr.com



© josef chalat, architect  
 2015 ∞ all rights reserved



MAY 28, 2015, CLIENT REVIEW									
June 1, 2015, for permit and construction									

**Kepware Technologies**  
 3rd floor Tenant Improvements  
 400 Congress Street, Portland, Maine 04101  
 Contractor/Owner: A&M Partners,  
 120 Exchange Street Portland ME  
 CBL: 032 G001001, B3 Zoning District

4th floor ceiling plan  
 details