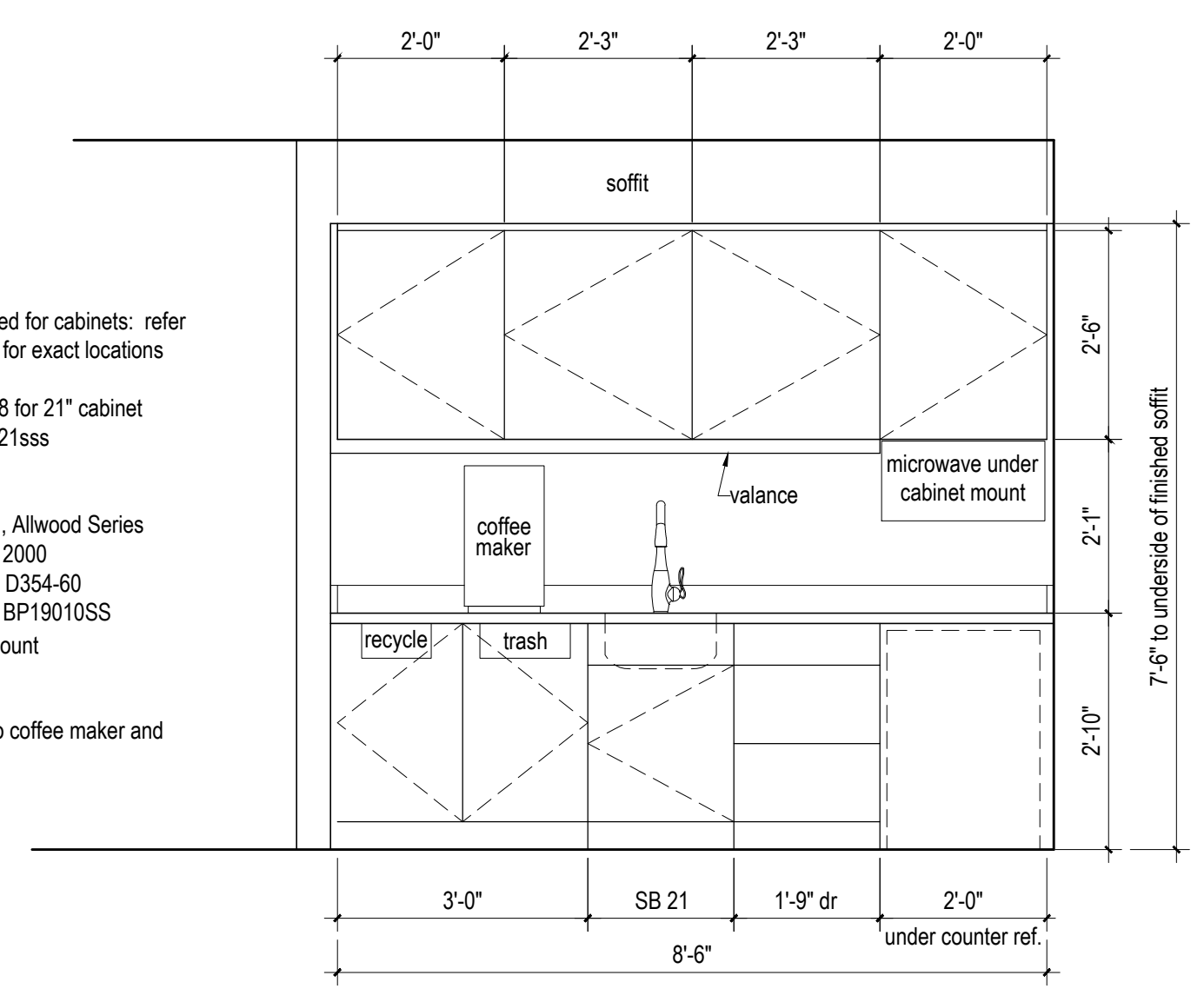
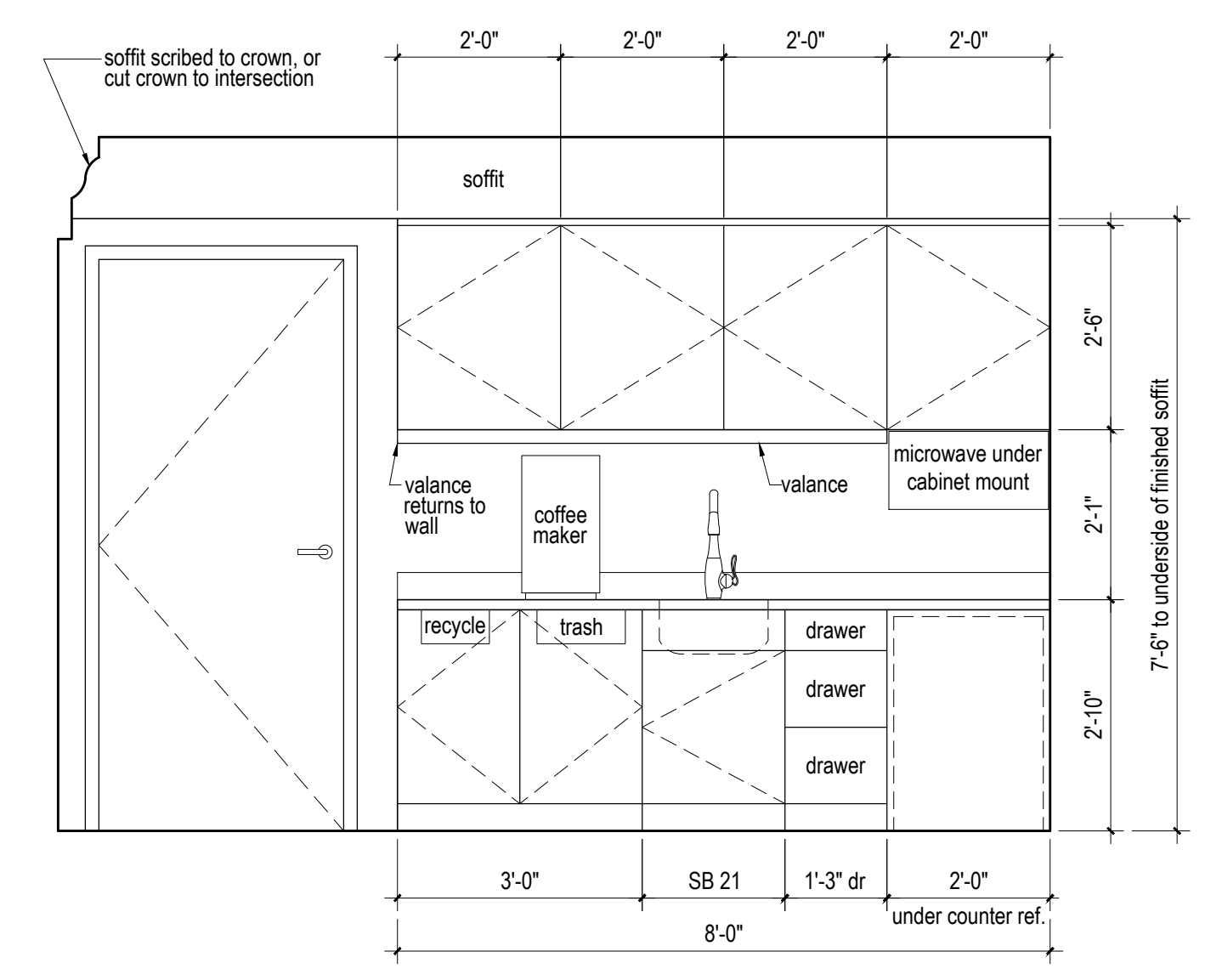


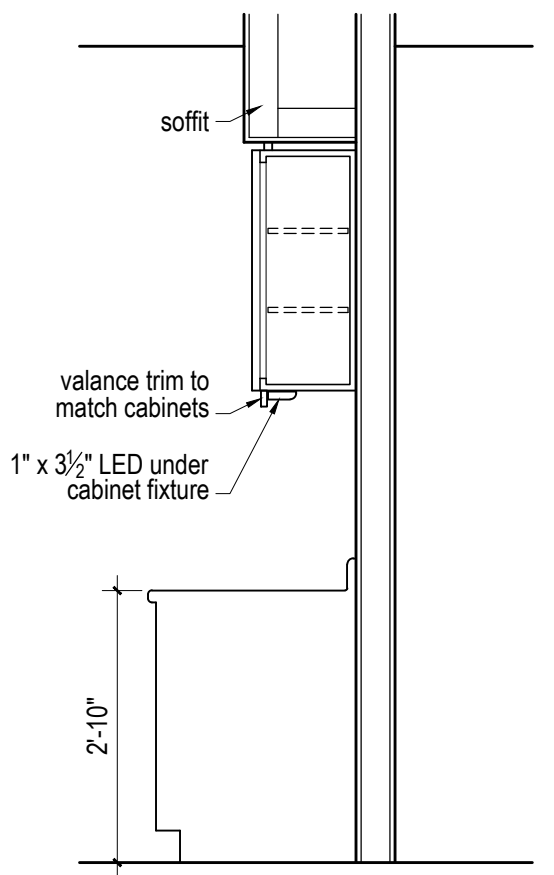
Notes:
 Provide blocking as required for cabinets: refer to millwork shop drawings for exact locations
 Sink: Elkay ELUHAD 1418 for 21" cabinet
 Faucet: Elkay Allure LK7921sss
 Cabinets:
 Calibra 2 Maple, Natural, Allwood Series
 Plastic Laminate: E-Top 2000
 wisonart designer white D354-60
 Cabinet pulls: Amerock 3" BP19010SS
 5 1/8" x 1 1/2" x 1/2" with 3" mount
 Provide dedicated water to coffee maker and refrigerator.



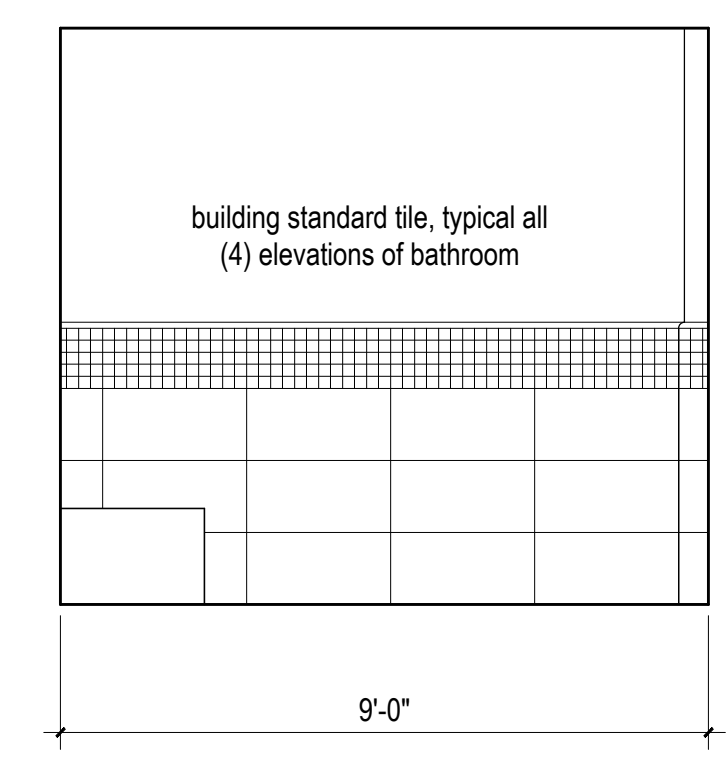
7 Kitchenette Cabinet Elevation (moss pit area)
 1/2" = 1'-0"



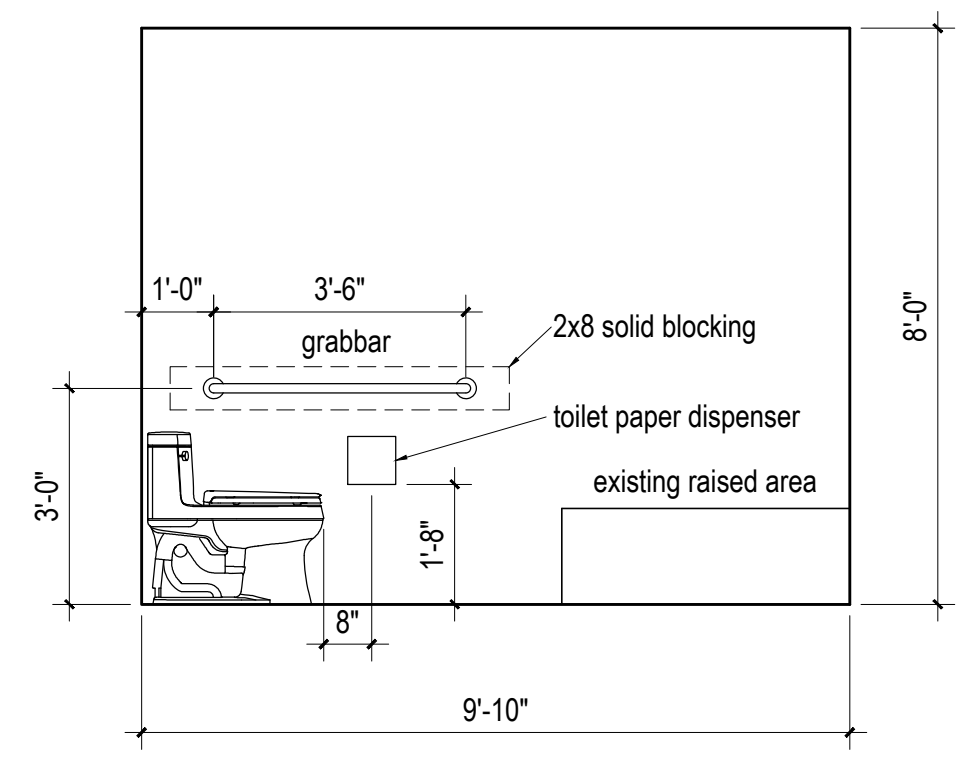
6 Kitchenette Cabinet Elevation (Annex)
 1/2" = 1'-0"



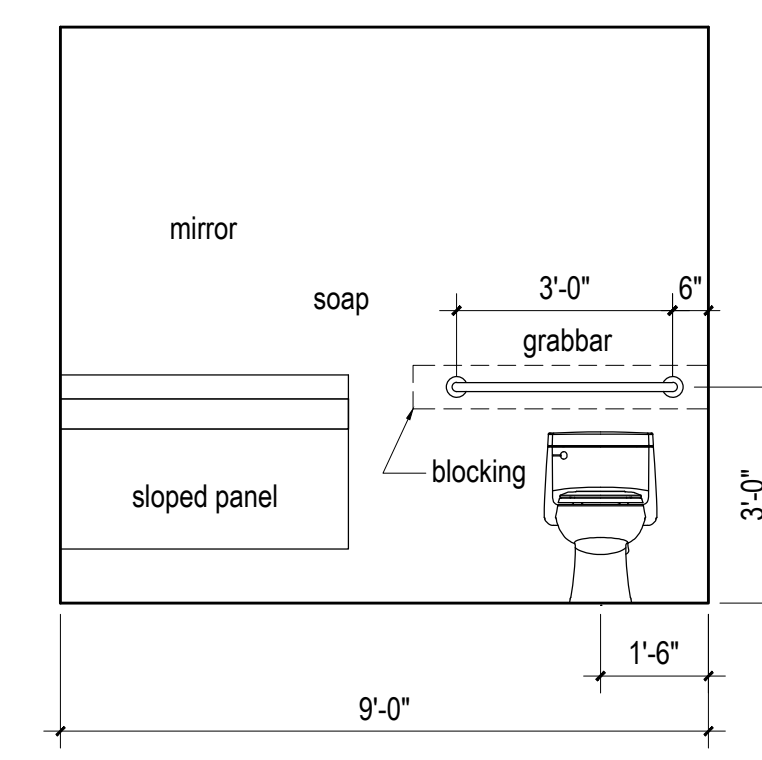
5 Kitchenette Cabinet Cross Section
 1/2" = 1'-0"



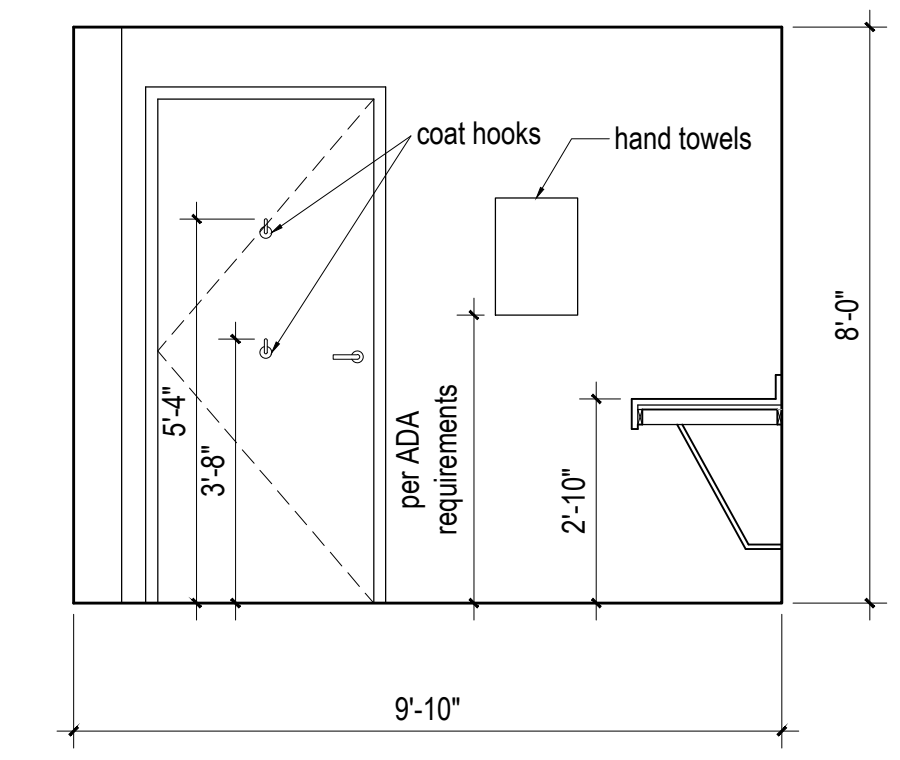
4 Elevation
 3/8" = 1'-0"



3 Elevation
 3/8" = 1'-0"



2 Elevation
 3/8" = 1'-0"



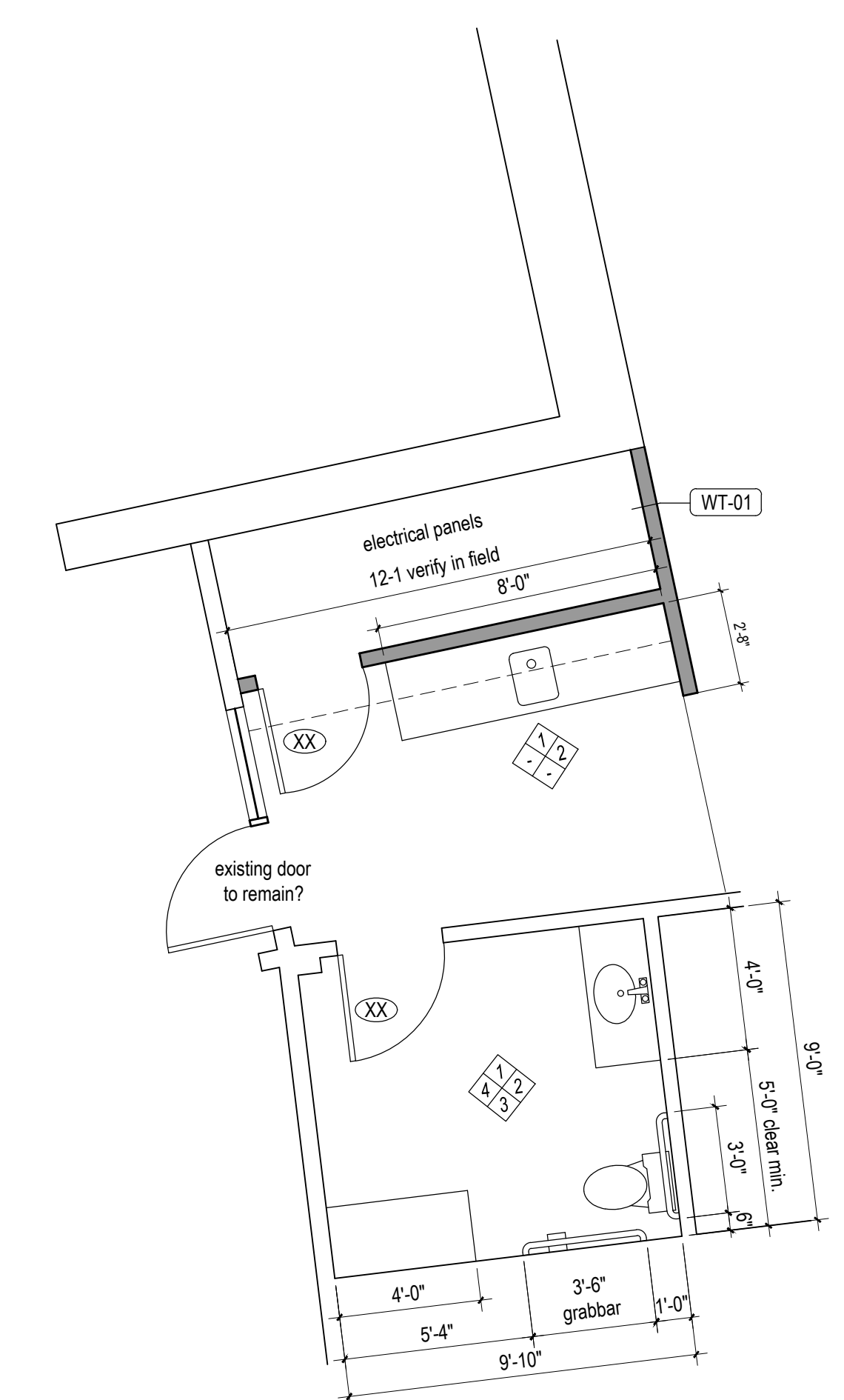
1 Elevation
 3/8" = 1'-0"

SPECIFICATIONS

Toilet
 lavatory
 faucet
 vanity top

Accessories:
 Grabbars
 Toilet Paper Holder
 soap dispenser
 towel dispenser
 sanitary napkin dispenser
 sanitary napkin holder

knee and toe clearance required



Reference floor plan
 1/2" = 1'-0"



April 6, 2015: Permit

Kepware Technologies
 Tenant Improvements
 3rd floor
 400 Congress Street, Portland, Maine 04101
 Contractor/Owner: A&M Partners,
 120 Exchange Street Portland ME
 CBL: 032 G001001, B3 Zoning District

Toilet Room and Kitchenette