

Prepared For:

Consulting Engineer:

**ARCHETYPE**  
architects  
48 Union Wharf Portland, Maine 04101  
(207) 772-6022 Fax (207) 772-4056

**U.S. PROBATION OFFICE**  
400 CONGRESS STREET  
PORTLAND, MAINE 04101

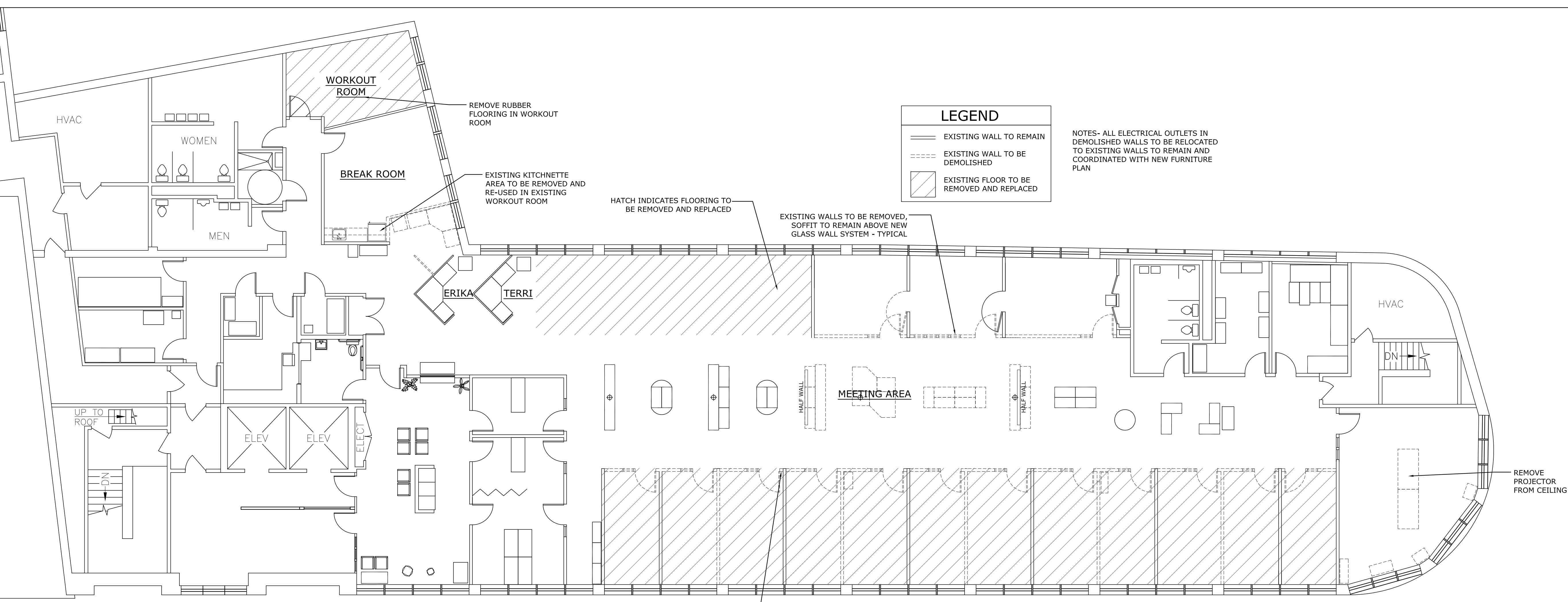
Revisions:

Scale: 1/8" = 1'-0"

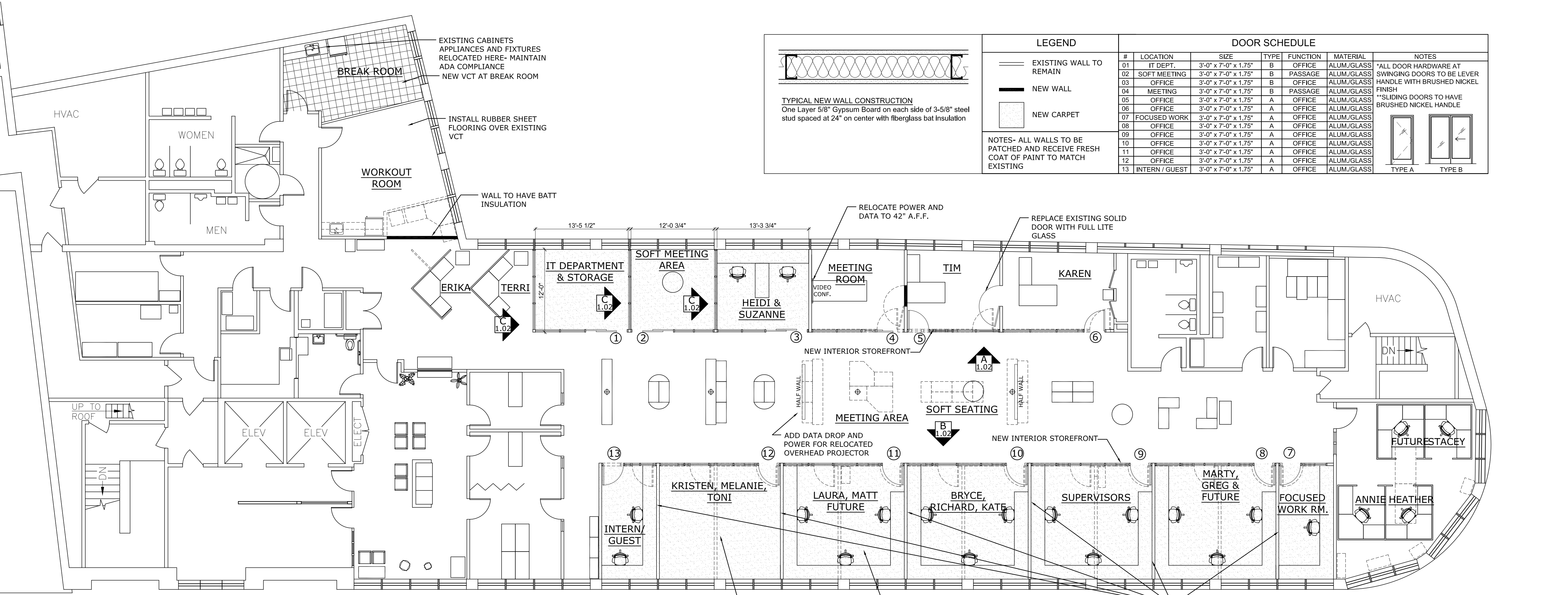
Date: February 4th, 2015

**DEMO AND PROPOSED PLAN**

**A1.01**



1 DEMO PLAN  
1/8"=1'-0"



2 PROPOSED PLAN  
1/8"=1'-0"

**LEGEND**

- EXISTING WALL TO REMAIN
- EXISTING WALL TO BE DEMOLISHED
- EXISTING FLOOR TO BE REMOVED AND REPLACED

NOTES- ALL ELECTRICAL OUTLETS IN DEMOLISHED WALLS TO BE RELOCATED TO EXISTING WALLS TO REMAIN AND COORDINATED WITH NEW FURNITURE PLAN

**TYPICAL NEW WALL CONSTRUCTION**  
One Layer 5/8" Gypsum Board on each side of 3-5/8" steel stud spaced at 24" on center with fiberglass bat insulation

LEGEND		DOOR SCHEDULE						
#	LOCATION	SIZE	TYPE	FUNCTION	MATERIAL	NOTES		
01	IT DEPT.	3'-0" x 7'-0" x 1.75"	B	OFFICE	ALUM./GLASS	*ALL DOOR HARDWARE AT SWINGING DOORS TO BE LEVER HANDLE WITH BRUSHED NICKEL FINISH	TYPE A TYPE B	
02	SOFT MEETING	3'-0" x 7'-0" x 1.75"	B	PASSAGE	ALUM./GLASS	**SLIDING DOORS TO HAVE BRUSHED NICKEL HANDLE		
03	OFFICE	3'-0" x 7'-0" x 1.75"	B	OFFICE	ALUM./GLASS			
04	MEETING	3'-0" x 7'-0" x 1.75"	B	PASSAGE	ALUM./GLASS			
05	OFFICE	3'-0" x 7'-0" x 1.75"	A	OFFICE	ALUM./GLASS			
06	OFFICE	3'-0" x 7'-0" x 1.75"	A	OFFICE	ALUM./GLASS			
07	FOCUSED WORK	3'-0" x 7'-0" x 1.75"	A	OFFICE	ALUM./GLASS			
08	OFFICE	3'-0" x 7'-0" x 1.75"	A	OFFICE	ALUM./GLASS			
09	OFFICE	3'-0" x 7'-0" x 1.75"	A	OFFICE	ALUM./GLASS			
10	OFFICE	3'-0" x 7'-0" x 1.75"	A	OFFICE	ALUM./GLASS			
11	OFFICE	3'-0" x 7'-0" x 1.75"	A	OFFICE	ALUM./GLASS			
12	OFFICE	3'-0" x 7'-0" x 1.75"	A	OFFICE	ALUM./GLASS			
13	INTERN / GUEST	3'-0" x 7'-0" x 1.75"	A	OFFICE	ALUM./GLASS			

NOTES- ALL WALLS TO BE PATCHED AND RECEIVE FRESH COAT OF PAINT TO MATCH EXISTING

