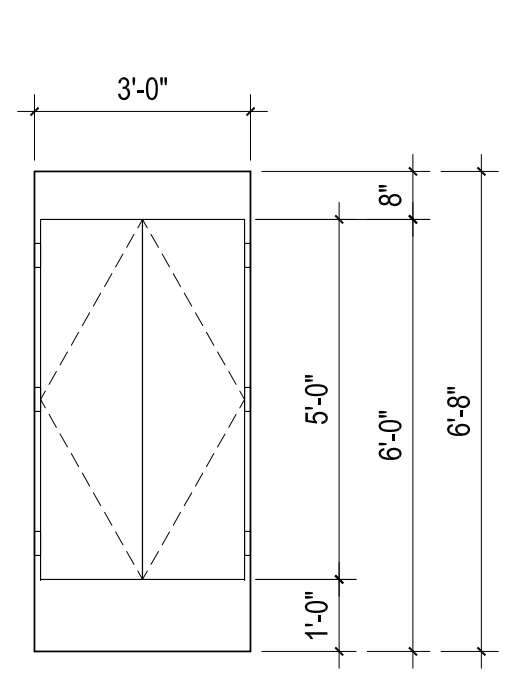


May 16, 2014 submission for permit

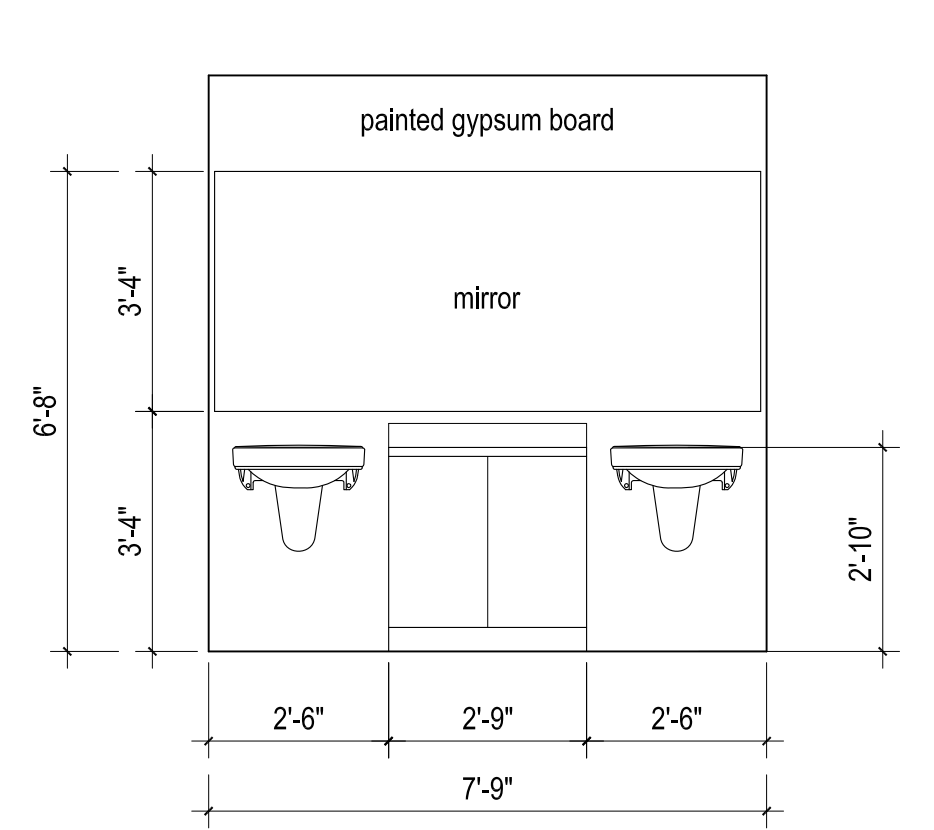
Kepware Technologies
 2nd and 4th floor Tentant Improvements
 400 Congress Street, Portland, Maine 04101
 Contractor/Owner: A&W Partners,
 120 Exchange Street Portland ME
 CBL: 032 G001001, B3 Zoning District

Shower Rooms Enlargement

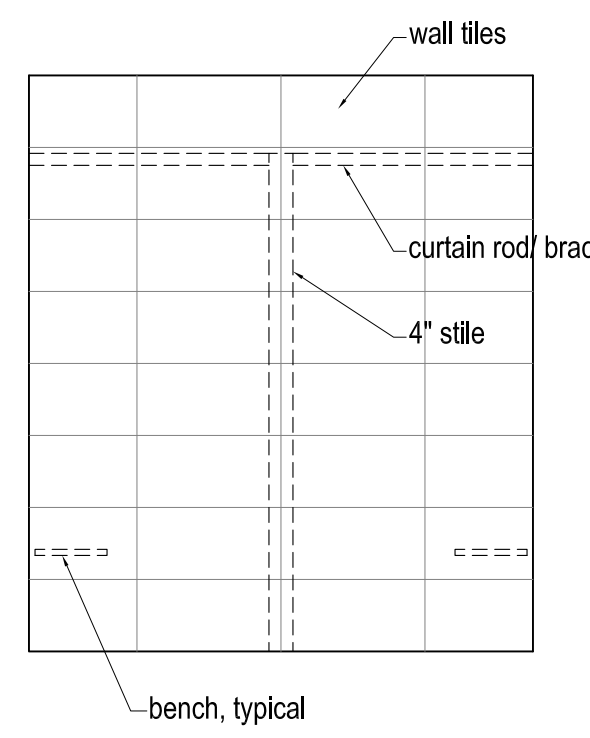
a5



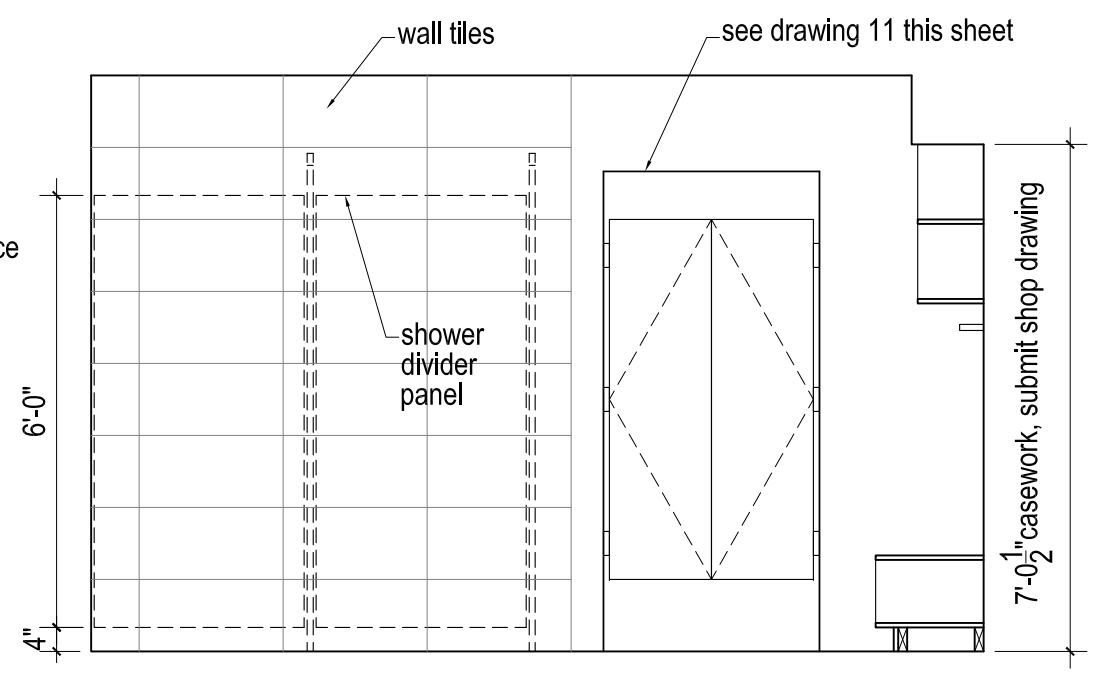
11 bar door dimensions
 3/8"= 1'-0"



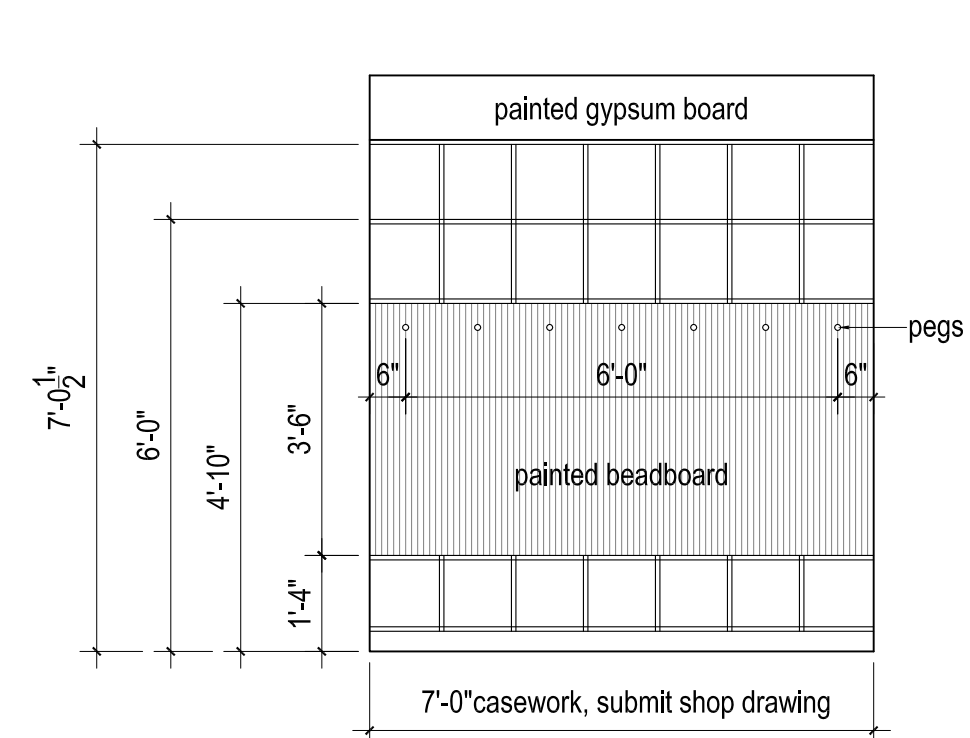
10 Interior Elevation
 3/8"= 1'-0"



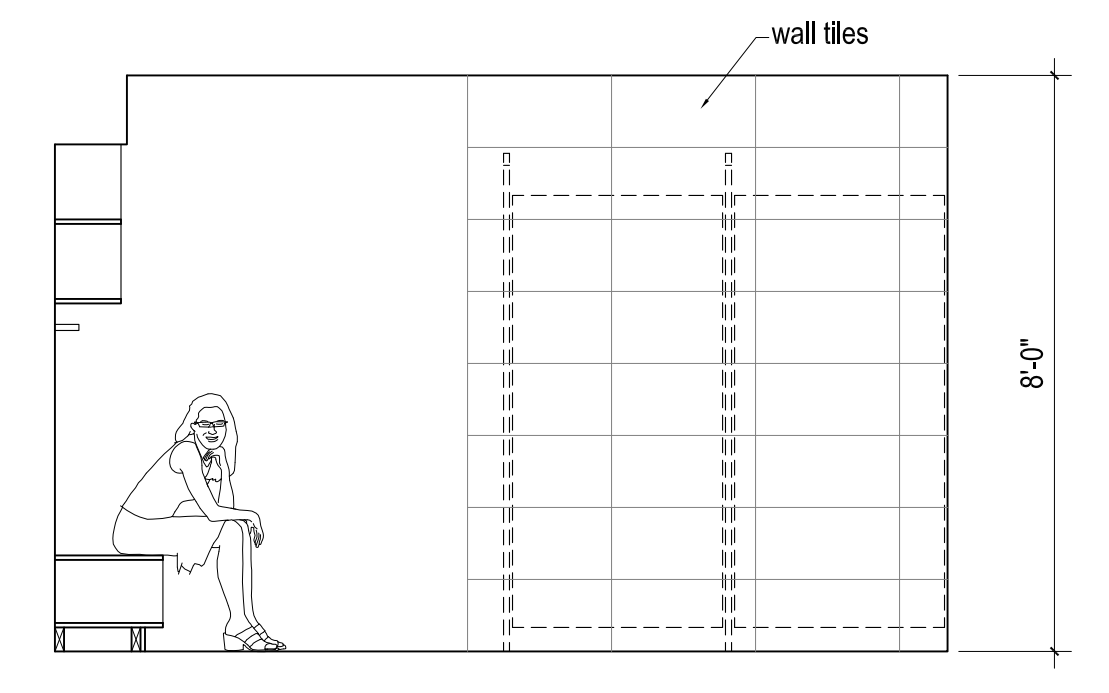
9 Interior Elevation
 3/8"= 1'-0"



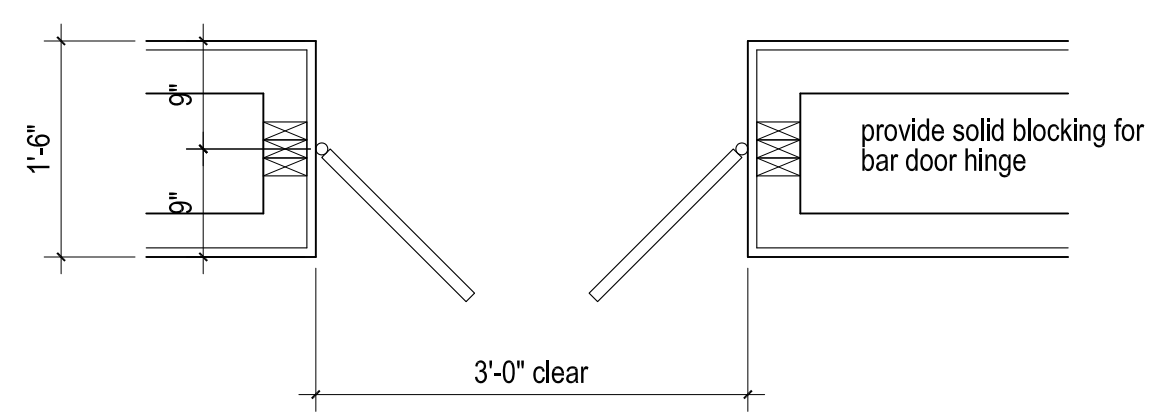
8 Interior Elevation
 3/8"= 1'-0"



7 Interior Elevation
 3/8"= 1'-0"

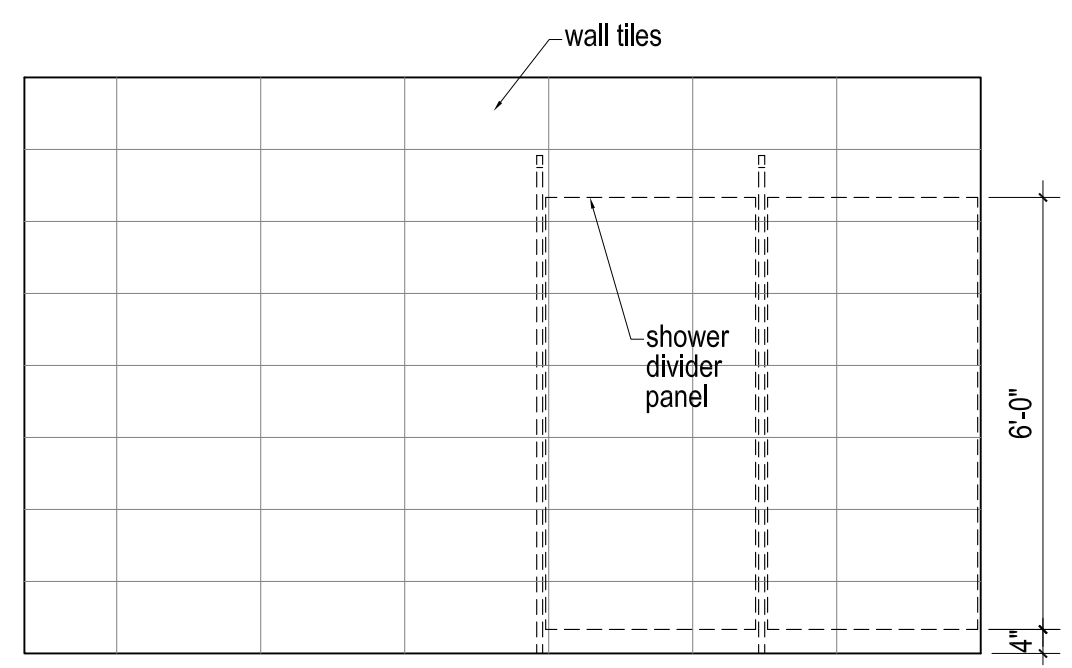


6 Interior Elevation
 3/8"= 1'-0"

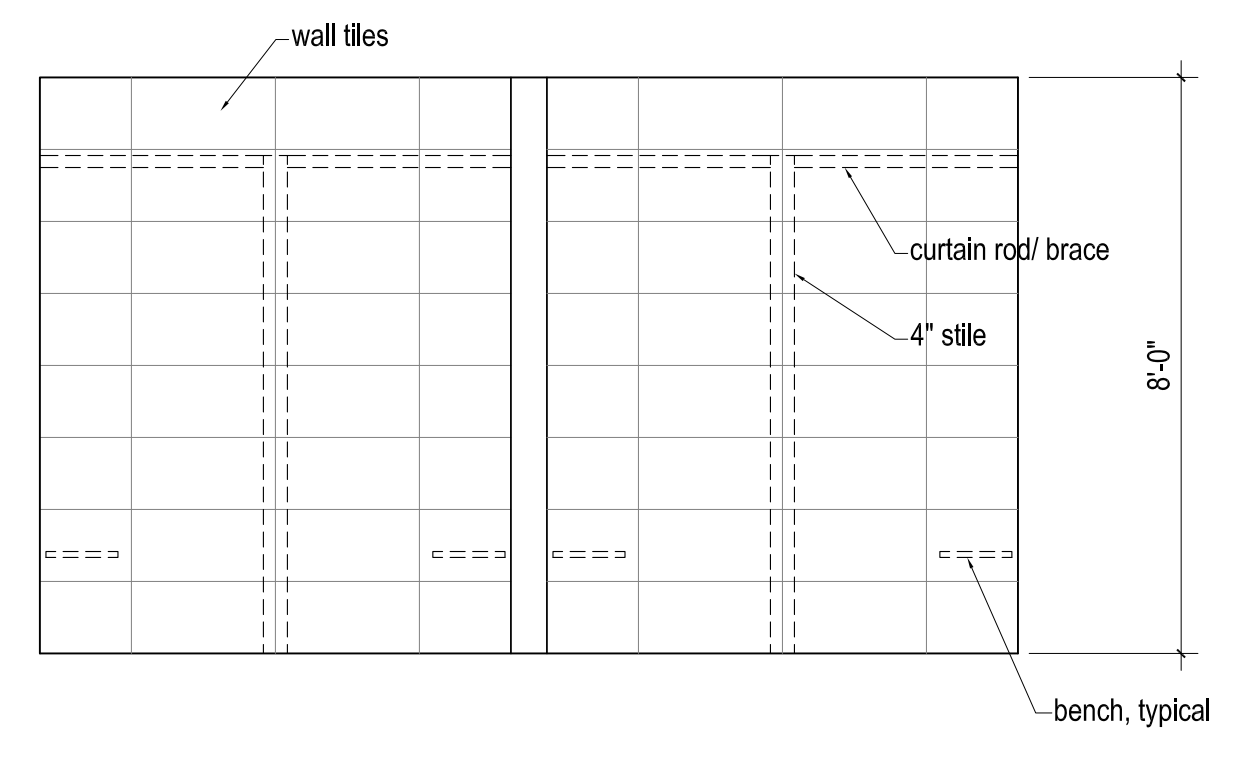


11a bar door plan dimensions
 3/4"= 1'-0"

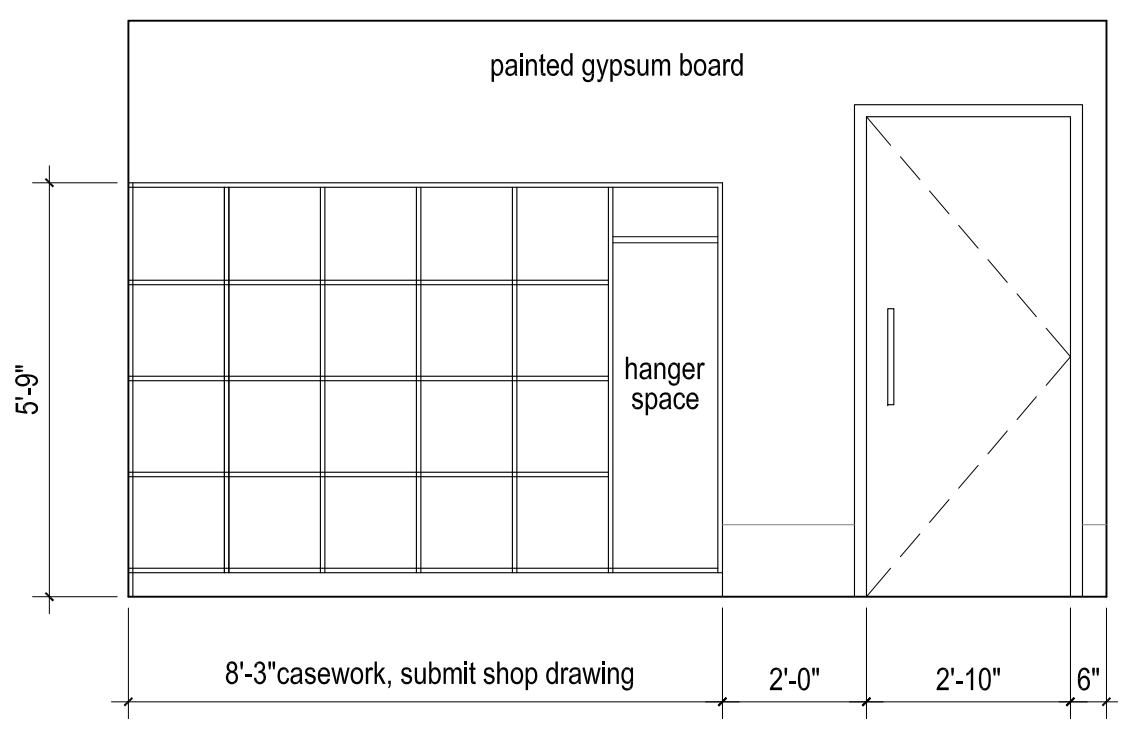
3 Fitness Room Plan Enlargement
 1/4"= 1'-0"



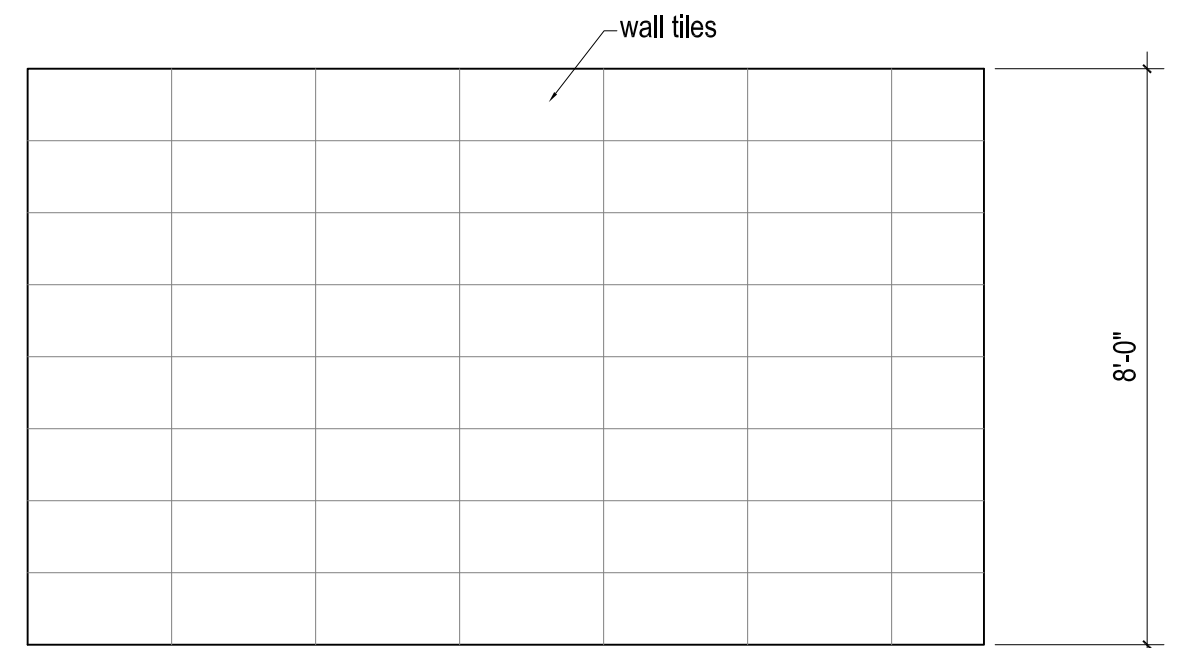
5 Interior Elevation
 3/8"= 1'-0"



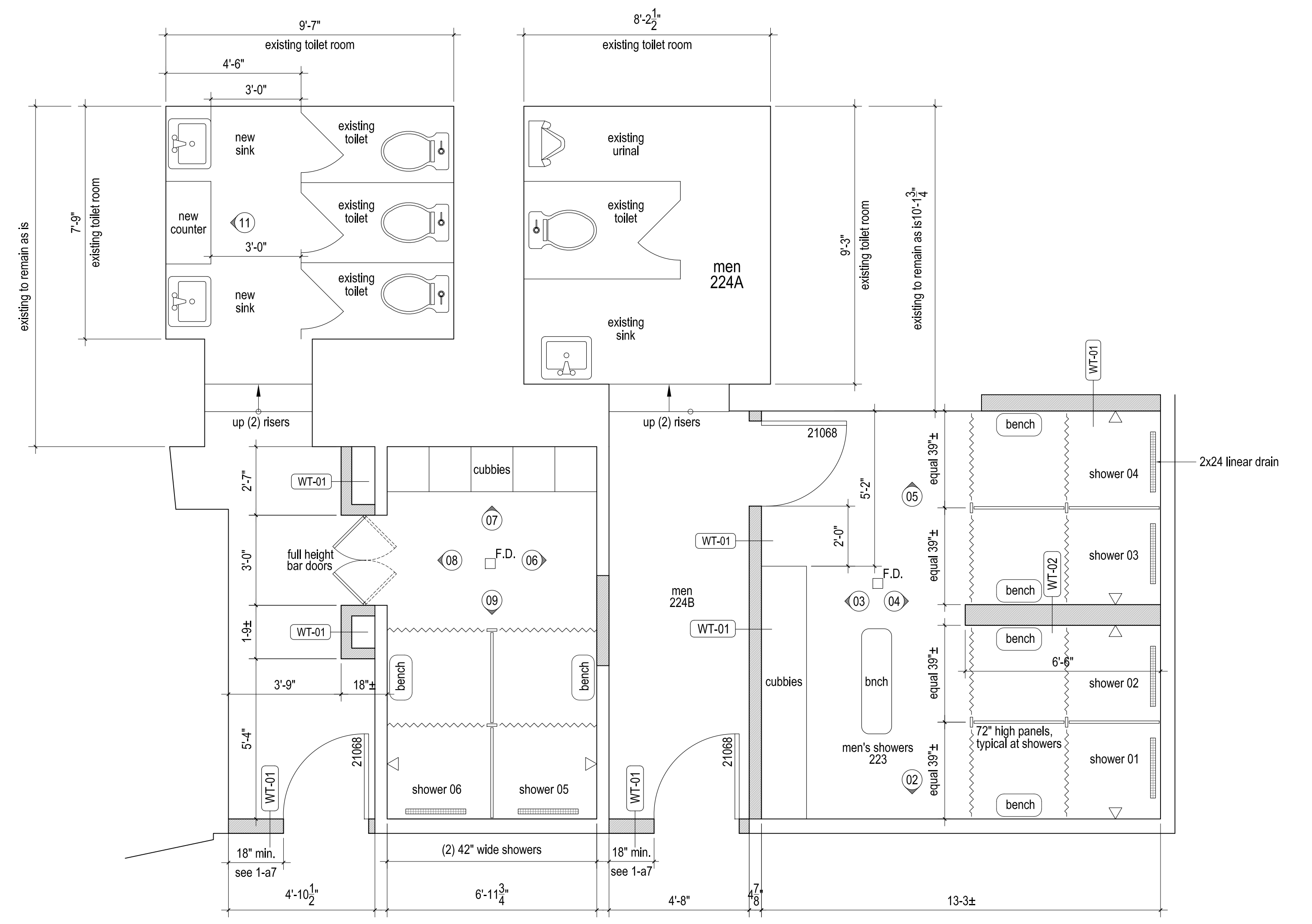
4 Interior Elevation
 3/8"= 1'-0"



3 Interior Elevation
 3/8"= 1'-0"



2 Interior Elevation
 3/8"= 1'-0"



Note: walls shown as existing for reference purposes only. The contractor shall determine which walls are to remain in this area based on existing alignment, and ease of construction.

1 Showers and changing rooms, floor plan
 3/8"= 1'-0"

