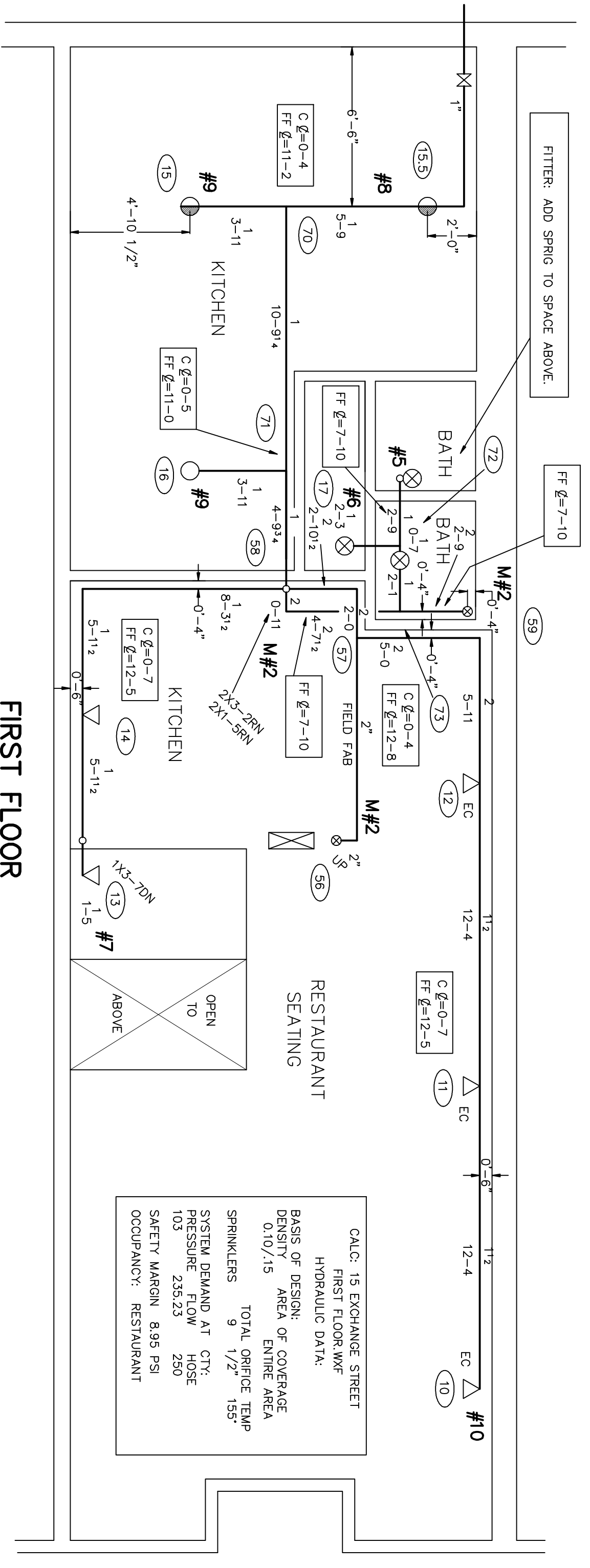
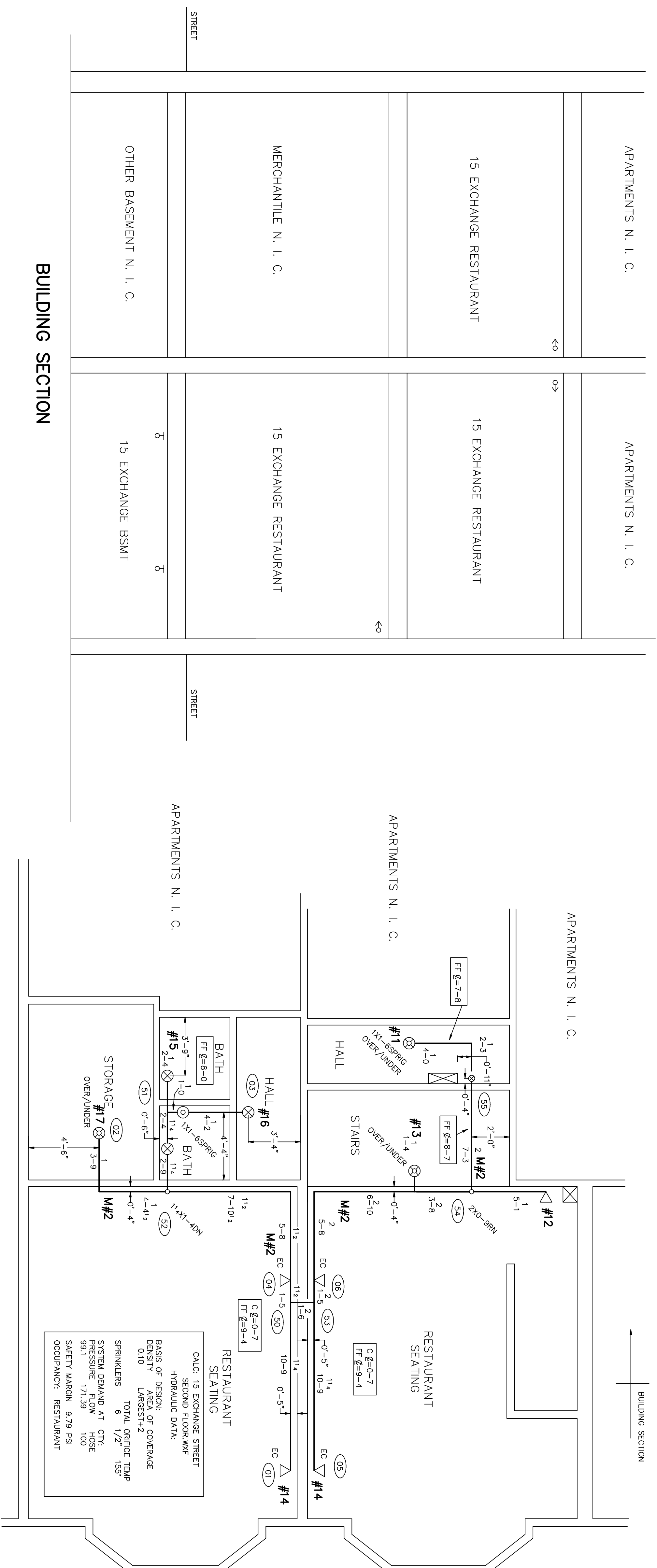
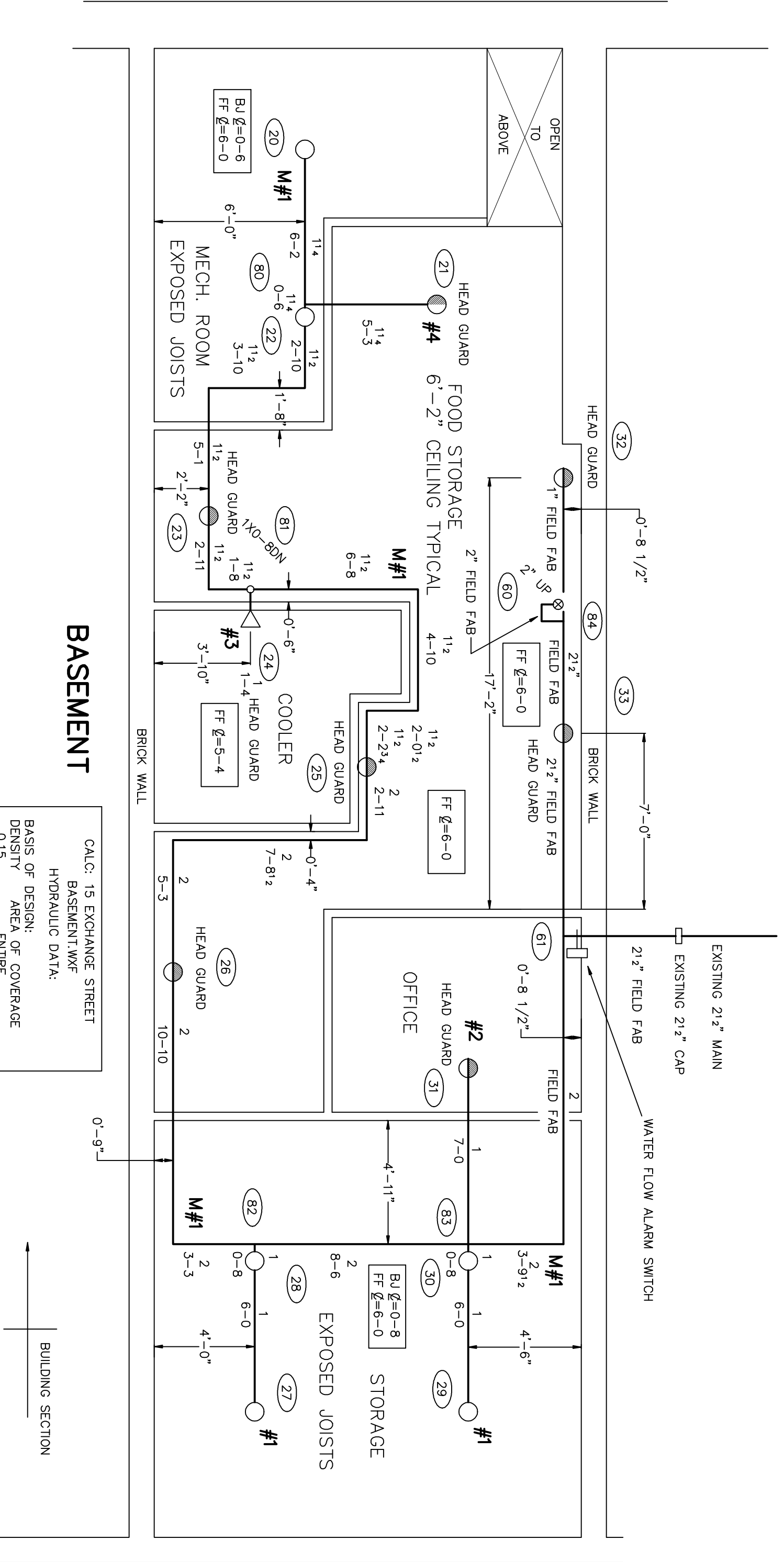


**BUILDING SECTION**

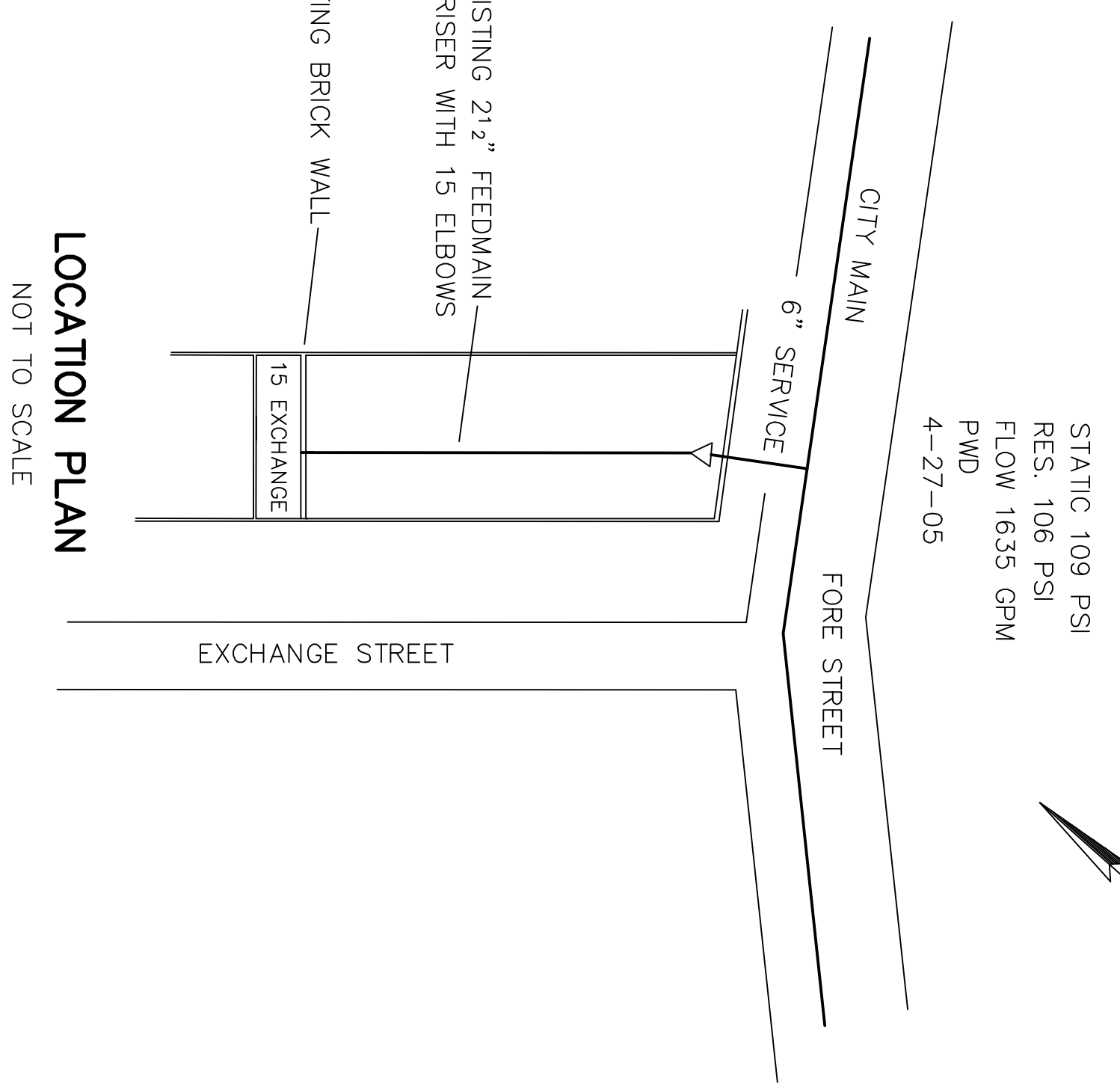


**FIRST FLOOR**



**BASEMENT**

CALC. 15 EXCHANGE STREET  
 BASEMENT W/F  
 HYDRAULIC DATA  
 BASIS OF DESIGN:  
 DESIGN AREA OF COVERAGE  
 DENSITY OF ENTIRE AREA  
 0.10/1.9  
 TOTAL OPENICE TEMP  
 SPRINKLERS 14 1/2" 155"  
 SYSTEM DEMAND AT CITY  
 PRESSURE 235.23  
 FLOW 250  
 SAFETY MARGIN 8.8 PSI  
 OCCUPANCY: RESTAURANT BASEMENT



**LOCATION PLAN**

NOT TO SCALE

**GENERAL NOTES**

ALL DIMENSIONS ARE CENTER TO CENTER U/N  
 ALL 2" AND SMALLER PIPE TO SCH. 40 BLACK SREWED.  
 ALL 2 1/2" PIPE IS SCH. 10 BLACK WITH ROLL GROOVED ENDS.  
 ALL SREWED FITTINGS TO BE STD. WT. C.I. BLACK U/N  
 ALL GROOVED FITTINGS ARE DUCTILE IRON

**SYMBOLS**

- OR BRASS PENDENT SPRINKLER ON A LINE 155" K=5.6
- ⊗ OR CHROME PENDENT SPRINKLER ON A DROP 155" K=5.6
- OR BRASS UPRIGHT SPRINKLER 155" K=5.6
- ▽ OR BRASS SIDEWALL SPRINKLER 155" K=5.6
- EC ▽ EXTENDED COVERAGE OR BRASS SIDEWALL SPRINKLER 155" K=5.6
- FF ⌀-XX FIN FLR TO CENTERLINE OF PIPE
- C ⌀=XX CEILING TO CENTERLINE OF PIPE
- B ⌀=XX BOTTOM OF JOISTS TO CENTERLINE OF PIPE
- RISE OR DROP NIPPLE
- ⊕ RISER BETWEEN FLOORS
- ⊗ HYDRAULIC REFERENCE POINT
- VICTAULIC CPLG.

**SYSTEM CLASSIFICATION**

A WET PIPE LIGHT AND ORDINARY GROUP 1  
 SPRINKLER SYSTEM TO BE INSTALLED IN ALL  
 AREAS OF THE RESTAURANT TO MEET NFPA,  
 STATE, AND CITY OF PORTLAND CODES.

- ⊗ 9 VIKING MICROFAST Q R CHROME SEMI RECESSED PENDENT 1/2"X1/2" K=5.6 SIN VK302
- 9 VIKING MICROFAST Q R BRASS UPRIGHT 1/2"X1/2" K=5.6 SIN VK300
- 9 VIKING MICROFAST Q R BRASS PENDENT 1/2"X1/2" K=5.6 SIN VK302
- EC ▽ 7 VIKING MICROFAST Q R EXTENDED COVERAGE BRASS HORIZONTAL SIDEWALL 1/2"X1/2" K=5.6 SIN VK605
- △ 4 VIKING MICROFAST Q R BRASS HORIZONTAL SIDEWALL 1/2"X1/2" K=5.6 SIN VK305

DESIGNED BY	DATE	REVISION	DATE
APPROVED BY			
CHECKED BY			
DRAWN BY			
SCALE			
SHEET NO.			

**DEAN & ALLYN, INC.**  
 FIRE PROTECTION • SPECIAL HAZARD  
 PO BOX 709, GRAY, MAINE 04039  
 (207)657-5646 FAX: (207)657-5647

**15 EXCHANGE STREET**  
**FORMER WALTERS RESTAURANT**  
**PORTLAND MAINE**

REV. 0  
 DATE: 10-28-09  
 BY: JCS

C09914