

**SECOND FLOOR PLAN- DEMOLITION**

Scale: 1/4"=1'-0"

**DEMOLITION NOTES:**

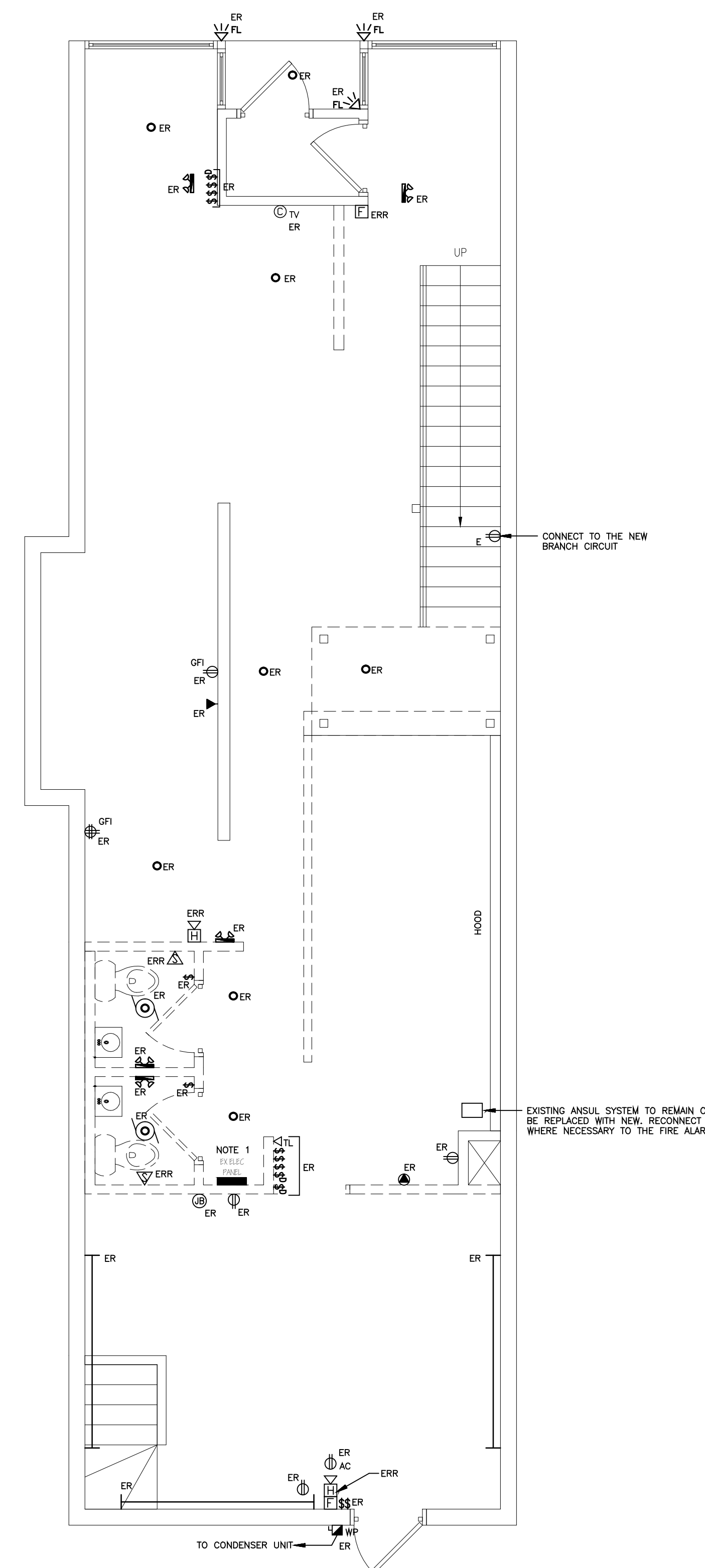
1. THE EQUIPMENT SHOWN IS TO BE USED FOR DIAGRAMMATIC PURPOSES ONLY. IT SHALL BE THE RESPONSIBILITY OF THIS CONTRACTOR TO REVIEW THE SITE AND TO COORDINATE WITH THE GENERAL CONTRACTOR TO DETERMINE THE AMOUNT AND PHASING OF DEMOLITION WORK REQUIRED.
2. THIS CONTRACTOR SHALL BE RESPONSIBLE TO ENSURE THAT ELECTRICAL EQUIPMENT BEING REMOVED BY THE GENERAL/DEMOLITION CONTRACTOR IS TAGGED AND MADE ELECTRICALLY SAFE. CUT ALL CABLES FROM THE PANEL AND AT THE EQUIPMENT TO ENSURE SAFE REMOVAL.
3. IN THE EVENT THAT A DEVICE BEING REMOVED CAUSES ANOTHER DEVICE REMAINING NOT TO OPERATE, IT SHALL BE THIS CONTRACTORS RESPONSIBILITY TO RECONNECT THE EQUIPMENT REMAINING BACK TO ITS SOURCE.

**NOTE:**

"E" EXISTING TO REMAIN.

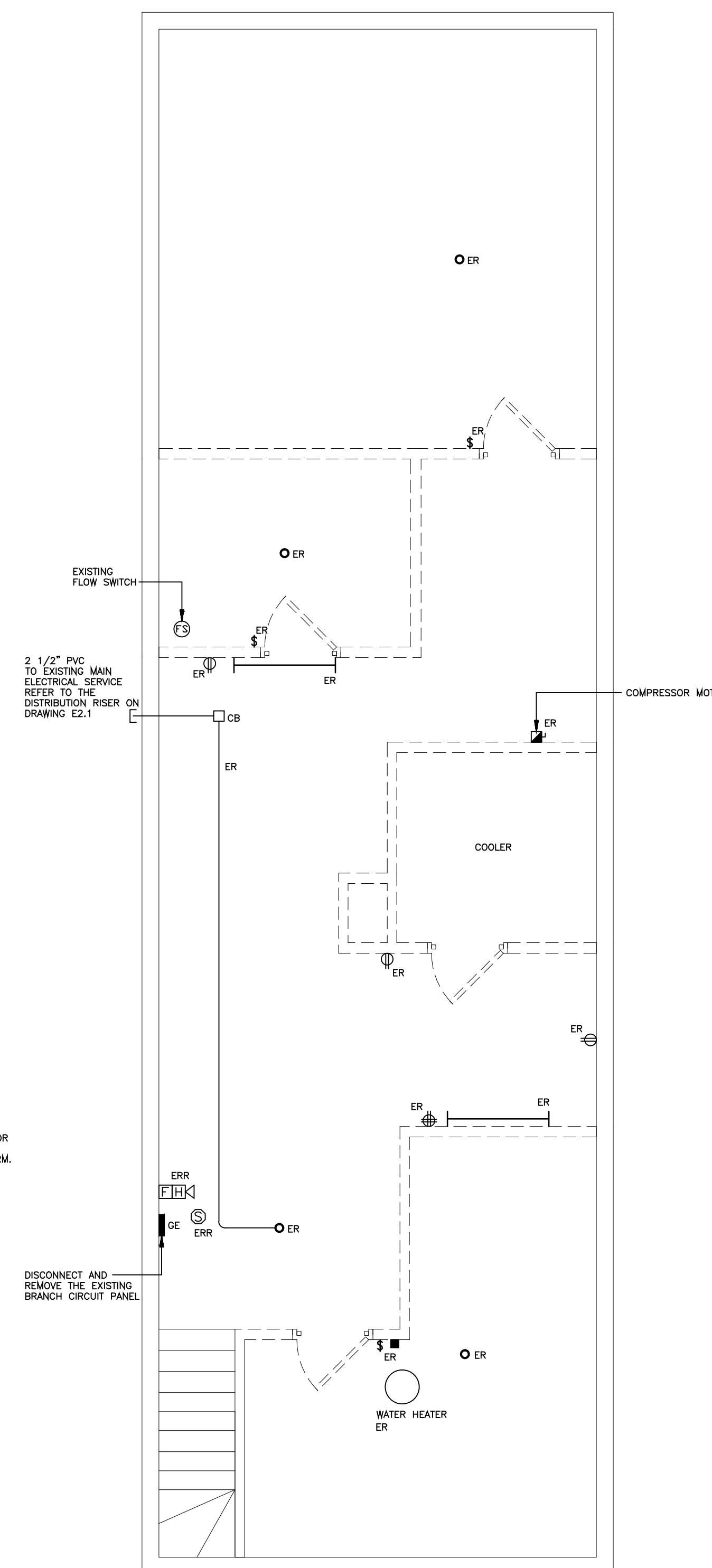
"ER" EXISTING TO BE DISCONNECTED AND REMOVED IN ITS ENTIRETY BACK TO ITS SOURCE.

"ERR" EXISTING TO BE REMOVED AND RELOCATED.



**FIRST FLOOR PLAN- DEMOLITION**

Scale: 1/4"=1'-0"



**BASEMENT PLAN- DEMOLITION**

Scale: 1/4"=1'-0"



**SHEPHERD ENGINEERING, INC.**  
 ELECTRICAL CONSULTANTS

1308 GRAFTON STREET  
 WORCESTER, MASSACHUSETTS 01604  
 PHONE: (508) 757-7793 \* FAX: (508) 753-2309  
 REFERENCE NO.: 13061

DESCRIPTION	DATE	MARK

**B GOOD**  
 PORTLAND, ME

15 Exchange Street  
 Portland, ME

Drawing Title  
**ELECTRICAL  
 FLOOR PLANS-  
 DEMOLITION**

Commission Number:

Scale: AS NOTED

File Name:

Drawn By: GCR

Issue Date: April 12, 2013

**ED-1**