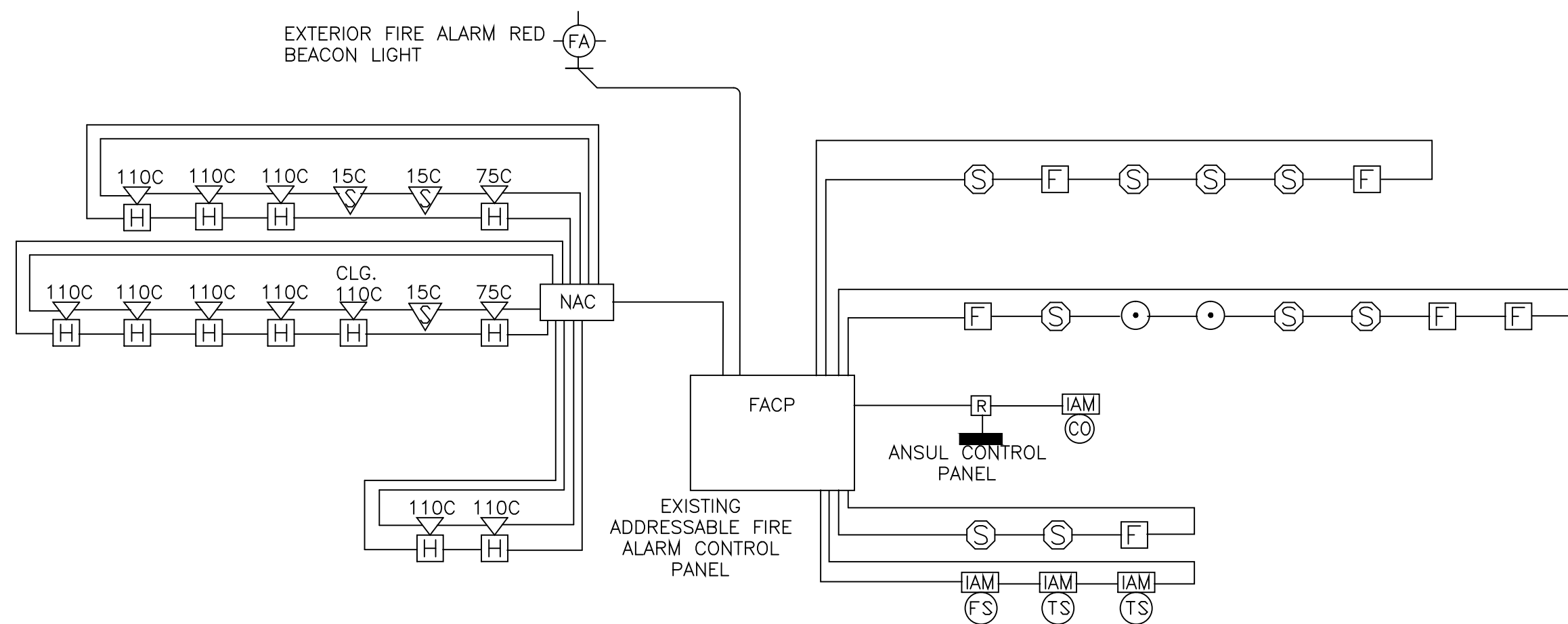
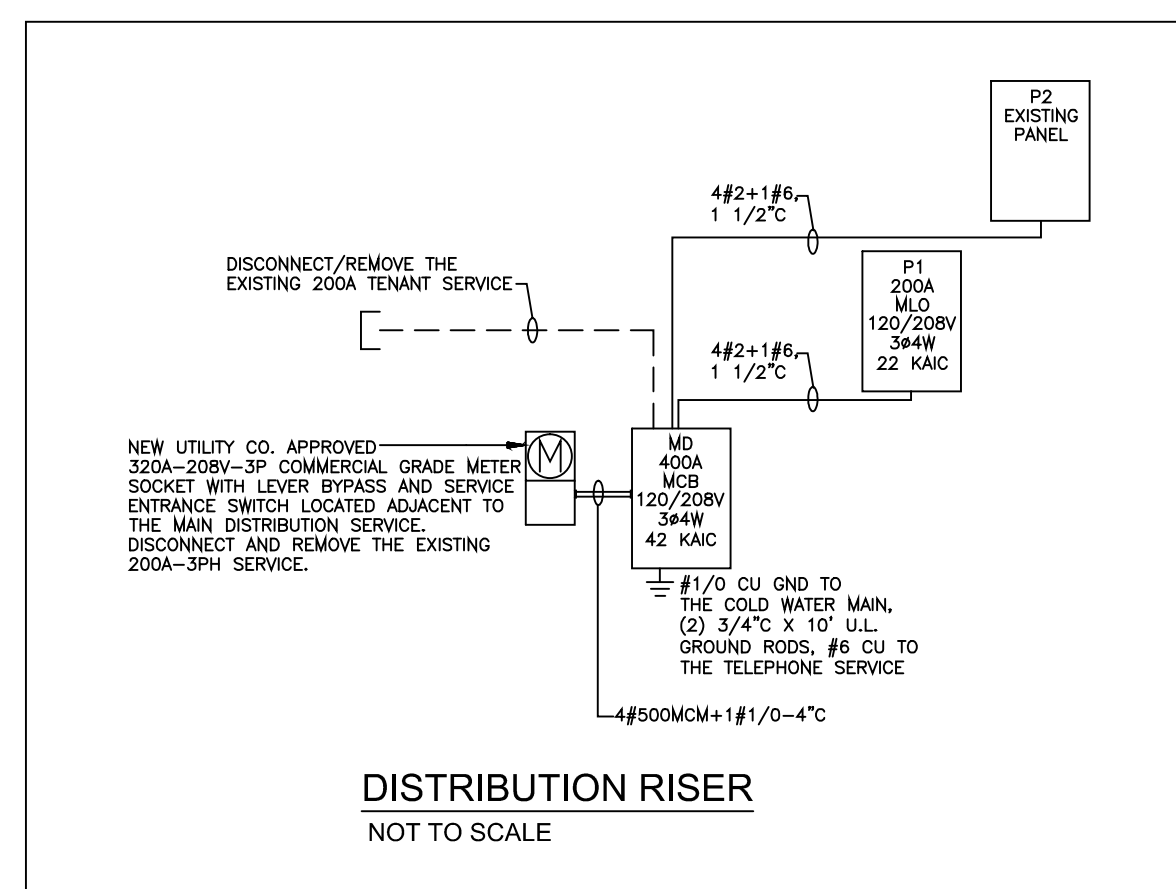


PANEL: MD				42 KAIC			
MAIN: 400A MCB				TYPE: SQUARE D CO. OR EQUAL SURFACE			
VOLTAGE: 120/208V PHASE: 3 WIRE: 4							
CIR	DESCRIPTION	TRIP POLE	CIR	DESCRIPTION	TRIP POLE	CIR	DESCRIPTION
1	WATER HEATER	30 2	2	HOOD EXHAUST FAN	20 3		
3	HOOD MAU-1	20 3	6	BASEMENT LTS.	20 1		
9	CU-2	30 2	12	CU-1	30 2		
11	BASEMENT REC.	20 1	14	CU-3	30 2		
13	COMPRESSOR COOLER	20 2	18	COOLER FAN COIL	20 2		
15	COMPRESSOR FREEZER	20 2	22	FREEZER FAN COIL	20 2		
17	FREEZER LTS/HTR.	20 1	24	CONDENSATE PUMP	20 1		
19	COOLER LTS/HTR.	20 1	26	COMMUNICATIONS QUAD	20 1		
21	SERVER QUAD	20 1	30	SERVER QUAD	20 1		
23	PANEL P1	100 3	34	PANEL P2 (EXIST.)	100 3		
25	SPARE	20 1	38	SPARE	20 1		
27	SPARE	20 1	40	SPARE	20 1		
29	SPARE	20 1	42	SPARE	20 1		

PANEL: P1				42 KAIC			
MAIN: 200A MLO				TYPE: SQUARE D CO. OR EQUAL SURFACE			
VOLTAGE: 120/208V PHASE: 3 WIRE: 4							
CIR	DESCRIPTION	TRIP POLE	CIR	DESCRIPTION	TRIP POLE	CIR	DESCRIPTION
1	CASHER/DINING/TOILET RM LTS.	20 1	2	DINING TRACK LTS.	20 1		
3	DINING TRACK LTS.	20 1	4	DINING TRACK LTS.	20 1		
5	LVST. LTS.	20 1	6	KITCHEN/PREP LTS.	20 1		
7	DINING TRACK LTS.	20 1	8	GENERAL RECS.	20 1		
9	CASHER POS	20 1	10	WINDOW REC.	20 1		
11	DINING RECS.	20 1	12	SOFFIT REC.	20 1		
13	SOFFIT REC.	20 1	14	SODA MACHINE	20 1		
15	SODA MACHINE	20 1	16	SODA PUMP	20 1		
17	BEV. DISPENSER	20 1	18	BEV. DISPENSER	20 1		
19	CONV. OVEN	50 2	20	FRENCH FRY WARMER	20 1		
21	ICE CREAM CABINET	20 1	22	SANDWICH UNIT	20 1		
23	BEV. DISPENSER	20 1	24	ICE MAKER	20 1		
25	BEV. DISPENSER	20 1	26	BLENDEES	20 1		
27	DIPPERWELL	20 1	28	REF. CASE	20 1		
29	FRYER	20 1	30	MEAT GRINDER	20 1		
31	HOT WELL	20 1	32	STEAM TABLE	20 1		
33	WARNING DRAWER	20 1	34	ANSUL SYSTEM	20 1		
35	SPARE	20 1	36	SPARE	20 1		
37	SPARE	20 1	38	SPARE	20 1		
39	SPARE	20 1	40	SPARE	20 1		
41	SPARE	20 1	42	SPARE	20 1		



FIRE ALARM NOTES:

THE FIRE ALARM CONTROL PANEL IS EXISTING. THE ELECTRICAL CONTRACTOR SHALL VISIT THE SITE TO DETERMINE LENGTHS OF CABLE. ALL FIRE ALARM CIRCUIT WIRING SHALL BE IN METAL SHEATH WITH PAINTED RED BAND ON THE ENTIRE LENGTH OF CABLE IF ACCEPTABLE TO LOCAL AUTHORITY HAVING JURISDICTION. AUDIO/VISUAL CIRCUITS SHALL BE PER MANUFACTURER'S RECOMMENDATIONS, IN METAL SHEATH AS MENTIONED ABOVE. CIRCUITS SHALL BE ARRANGED IN TRUE CLASS "A" FASHION.

THE EC SHALL PROVIDE STOPPER II PULL STATION COVERS WITH SOUNDERS ON ALL FIRE ALARM MANUAL PULL STATION DEVICES.

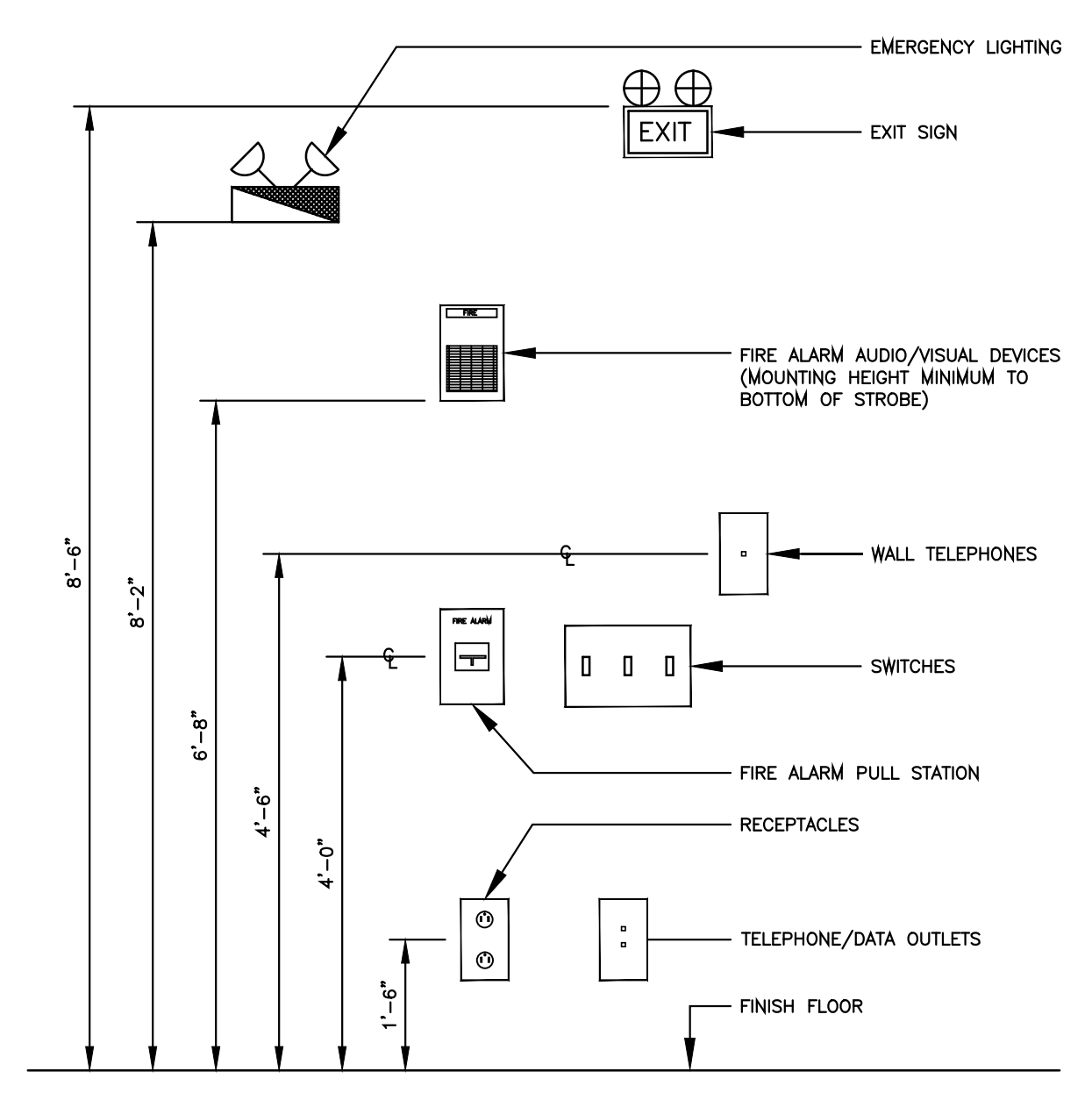
ALL FIRE ALARM PULL STATION INITIATING DEVICES SHALL BE MOUNTED AT 48" AFF.

ALL FIRE ALARM AUDIO/VISUAL NOTIFICATION APPLIANCES SHALL BE MOUNTED AT 80" AFF OR 6" BELOW THE CEILING.

THE FIRE ALARM AUDIO/VISUAL NOTIFICATION APPLIANCES SHALL HAVE A MINIMUM LIGHT INTENSITY OF 75 CANDELA AND A SOUND LEVEL OF 15 dBA ABOVE THE AMBIENT NOISE LEVEL.

AUDIO/VISUAL NOTIFICATION APPLIANCES SHALL BE SYNCHRONIZED.

ALL AUDIO/VISUAL NOTIFICATION APPLIANCES SHALL BE FLUSH MOUNTED UNLESS OTHERWISE NOTED. NOTIFICATION APPLIANCES THAT ARE INDICATED TO BE SURFACE MOUNTED SHALL BE MOUNTED ON BACK BOXES THAT ARE MANUFACTURED BY THE FIRE ALARM SYSTEM MANUFACTURER. SURFACE MOUNTED RIGID CONDUIT SHALL BE USED TO PROTECT THE FIRE ALARM CABLE WHERE EXPOSED.



NOTES:

ALL MOUNTING HEIGHTS SHALL BE MEASURED FROM THE FINISH FLOOR TO THE CENTERLINE OF THE DEVICE EXCEPT EXIT SIGNS, CLOCKS, EMERGENCY LIGHTING AND FIRE ALARM A/V DEVICES.

DEVICES SHALL BE INSTALLED ON A COMMON VERTICAL CENTERLINE WHEREVER POSSIBLE.

ALL DEVICES SHALL BE INSTALLED AT MOUNTING HEIGHTS AS INDICATED ON THIS DEVICE UNLESS OTHERWISE NOTED.

STROBE HEIGHT ILLUSTRATED AT MAXIMUM HEIGHT. STROBE SHALL BE 80" AFF OR 6" BELOW CEILING, WHICHEVER IS LOWER.

LEGEND

- FLUORESCENT 2X4 FIXTURE
- DOWN LIGHT/CEILING FIXTURE
- WALL MOUNTED FIXTURE
- FLUORESCENT STRIP FIXTURE
- EXIT SIGN
- EXIT SIGN/EMERGENCY BATTERY UNIT
- EMERGENCY BATTERY UNIT
- SINGLE POLE SWITCH
- THREE WAY SWITCH
- FOUR WAY SWITCH
- DIMMER SWITCH
- THERMAL SWITCH
- DUPLEX RECEPTACLE
- DOUBLE DUPLEX RECEPTACLE
- GFI RECEPTACLE
- SPECIAL OUTLET (SEE DRAWINGS)
- DISCONNECT SWITCH
- MOTOR
- JUNCTION BOX
- PANEL
- HOMERUN TO PANEL
- TELEPHONE OUTLET
- TEL/DATA OUTLET
- PULL STATION
- SMOKE DETECTOR
- STROBE
- HEAT DETECTOR
- HORN/STROBE
- FIRE FIGHTERS KEYBOX
- CARBON MONOXIDE DETECTOR
- FLOW SWITCH
- TAMPER SWITCH
- INDEPENDENT ADDRESSABLE MODULE
- WEATHER PROOF

The Architects Forum, Inc

72 Manchester Road
Newton, MA 02461

Tel 617 953 3636
Fax 617 964 6090

SHEPHERD ENGINEERING, INC.
ELECTRICAL CONSULTANTS

1308 GRAFTON STREET
WORCESTER, MASSACHUSETTS 01604

PHONE: (508) 757-7783 * FAX: (508) 753-2309
REFERENCE NO.: 13061

DESCRIPTION	DATE	MARK

B GOOD
PORTLAND, ME

15 Exchange Street
Portland, ME

Drawing Title
LEGEND, SCHEDULES & DETAILS

Commission Number:
Scale: AS NOTED
File Name:
Drawn By: GCR
Issue Date: April 12, 2013

E2.1