

SHEPHERD ENGINEERING, INC.
 ELECTRICAL CONSULTANTS

1308 GRAFTON STREET
 WORCESTER, MASSACHUSETTS 01604
 PHONE: (508) 757-7783 * FAX: (508) 753-2309
 REFERENCE NO.: 13061

DESCRIPTION	DATE	MARK

B GOOD
 PORTLAND, ME

15 Exchange Street
 Portland, ME

Drawing Title
**ELECTRICAL
 FLOOR PLANS-
 POWER**

Commission Number:

Scale: AS NOTED

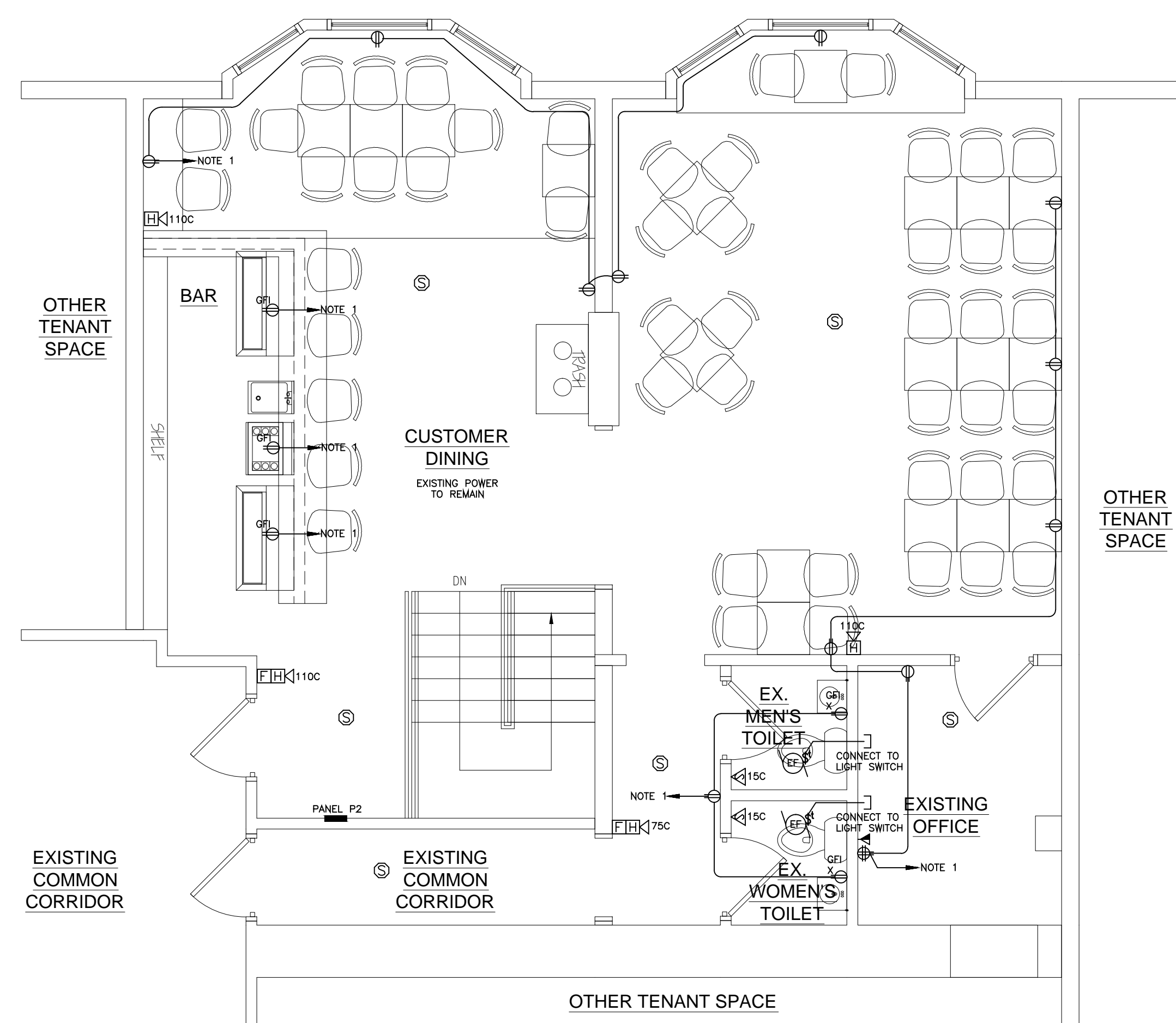
File Name:

Drawn By: GCR

Issue Date: April 12, 2013

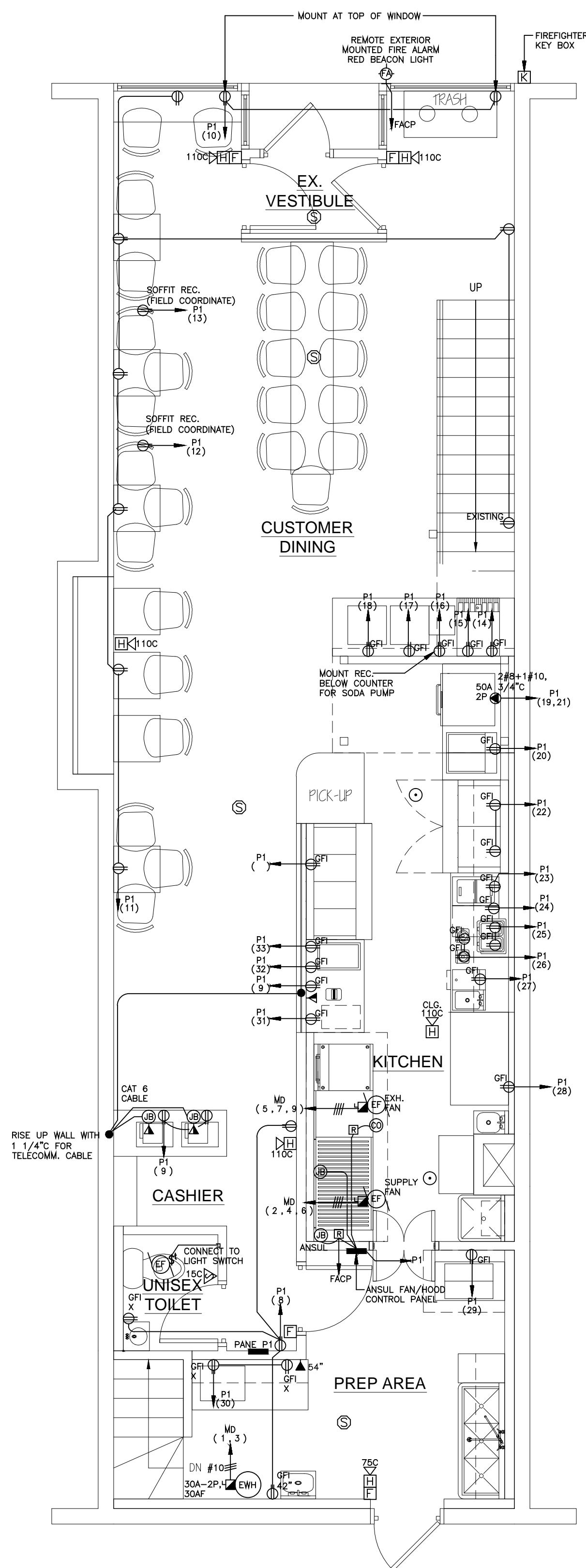
E1.2

FOR PERMIT APPLICATION ONLY
 APRIL, 2013

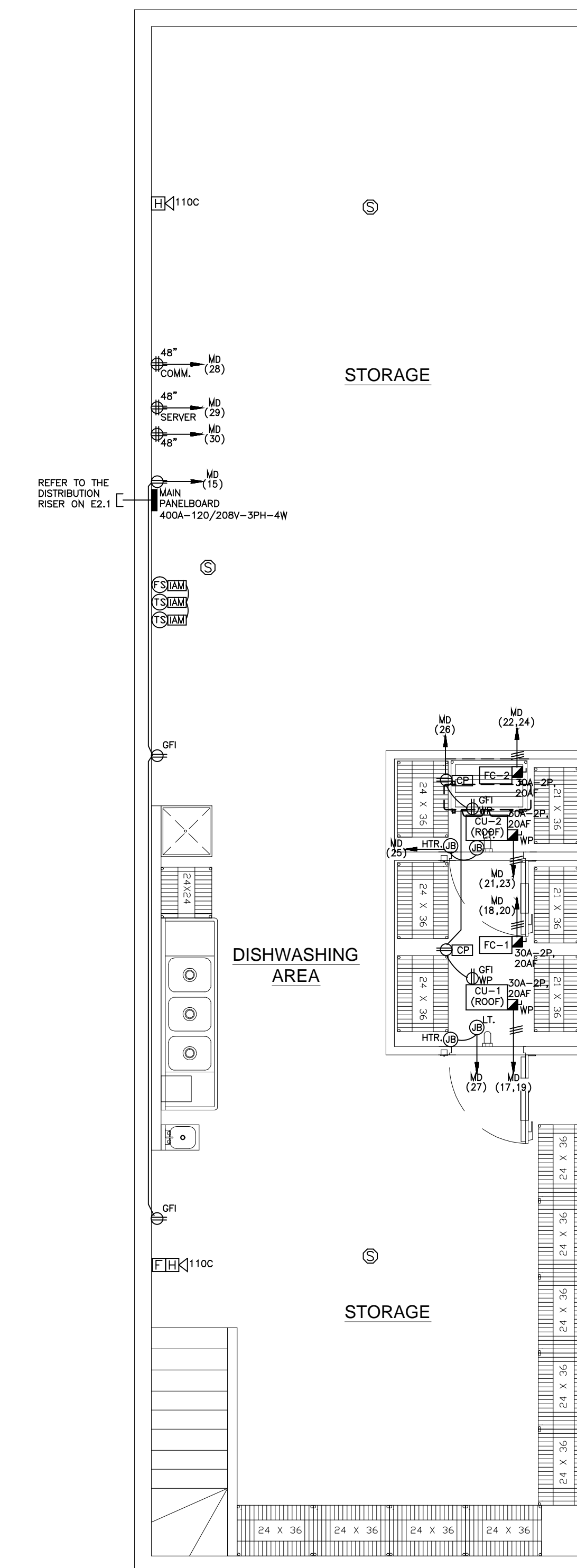


SECOND FLOOR PLAN- POWER/FA
 Scale: 1/4"=1'-0"

NOTE:
 CONNECT TO A NEW OR SPARE 20A-1POLE
 CIRCUIT BREAKER IN THE EXISTING G.E. CO.
 LOAD CENTER PANEL P2.



FIRST FLOOR PLAN- POWER/FA
 Scale: 1/4"=1'-0"



BASEMENT PLAN- POWER/FA
 Scale: 1/4"=1'-0"