



**SHEPHERD ENGINEERING, INC.**  
ELECTRICAL CONSULTANTS

1308 GRAFTON STREET  
WORCESTER, MASSACHUSETTS 01604  
PHONE: (508) 757-7783 \* FAX: (508) 753-2309  
REFERENCE NO.: 13061

DESCRIPTION	DATE	MARK

**B GOOD**  
PORTLAND, ME

15 Exchange Street  
Portland, ME

Drawing Title  
**ELECTRICAL  
FLOOR PLANS-  
LIGHTING**

Commission Number:

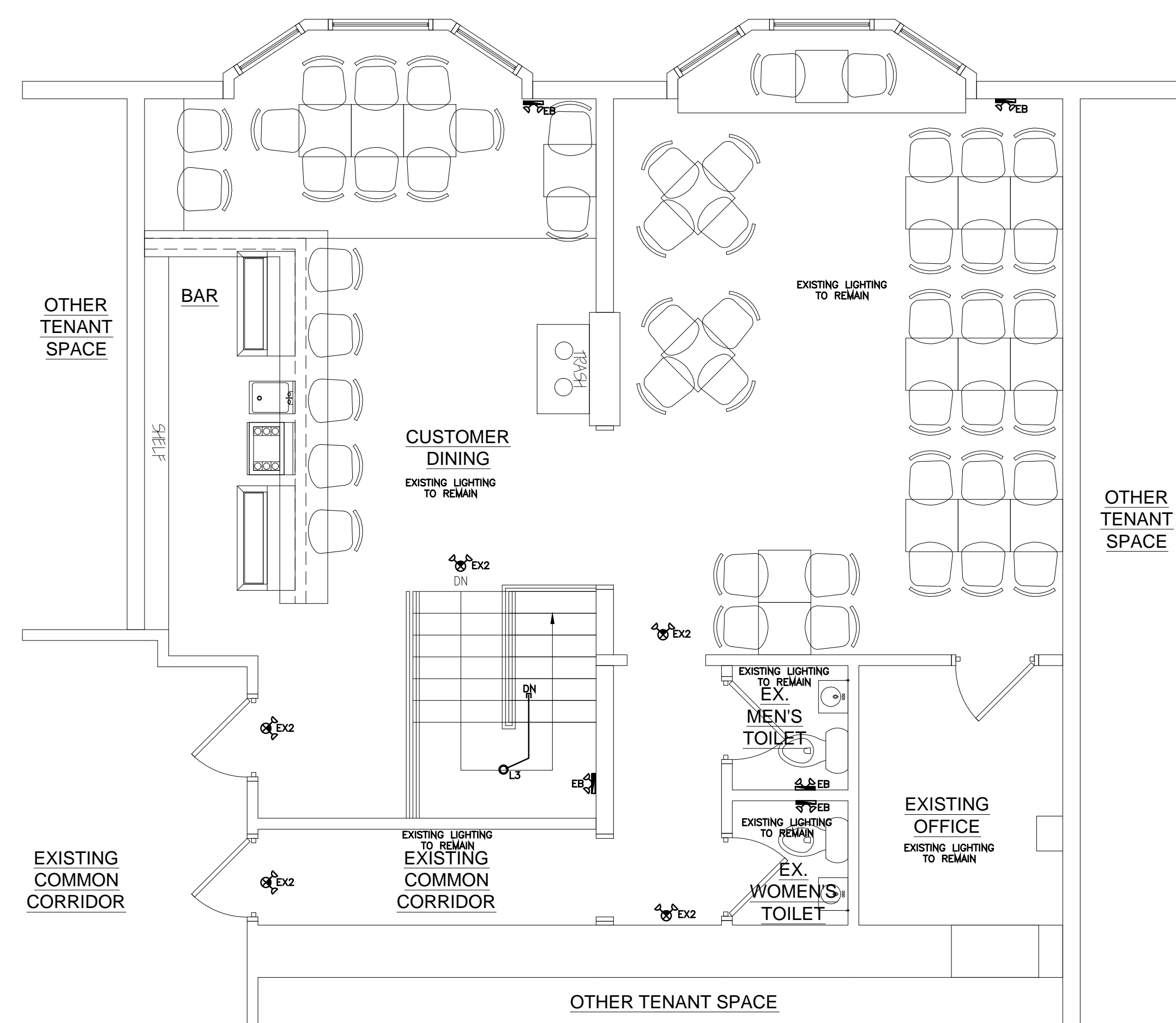
Scale: AS NOTED

File Name:

Drawn By: GCR

Issue Date: April 12, 2013

**E1.1**

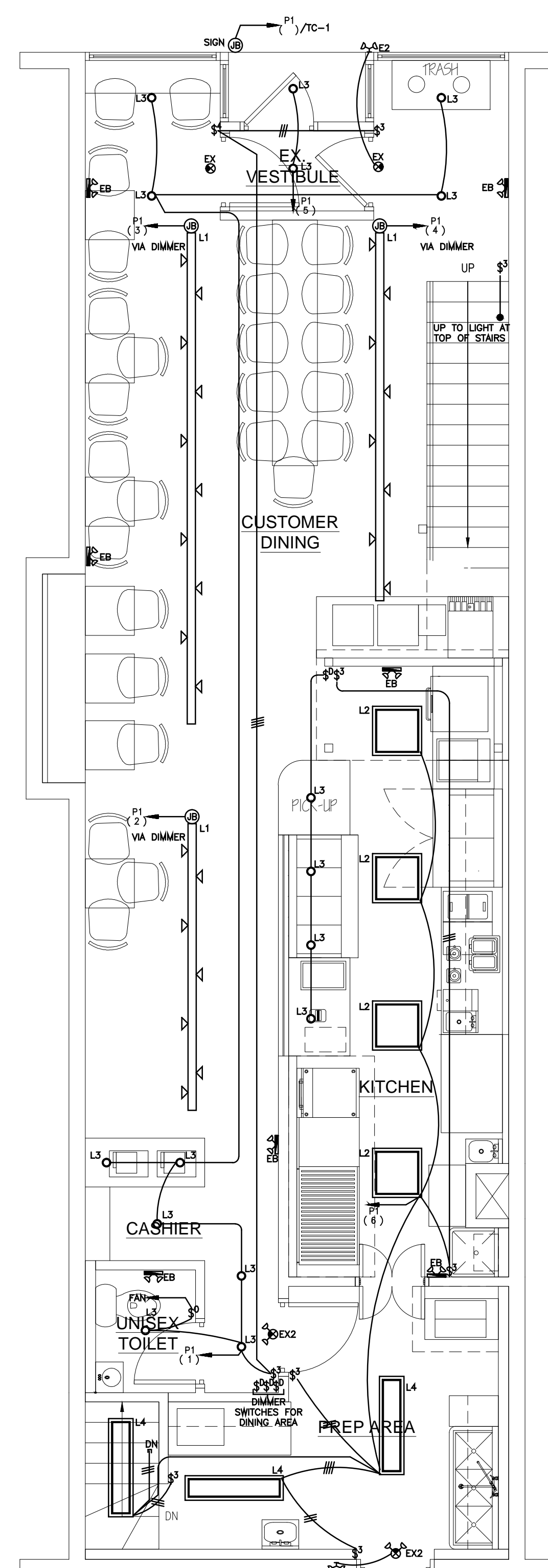


**SECOND FLOOR PLAN- LIGHTING**

Scale: 1/4"=1'-0"

**NOTE:**  
EXIT SIGNS AND EMERGENCY BATTERY  
UNITS ARE TO BE CONNECTED TO THE  
LINE SIDE OF THE LOCAL LIGHTING CIRCUIT.

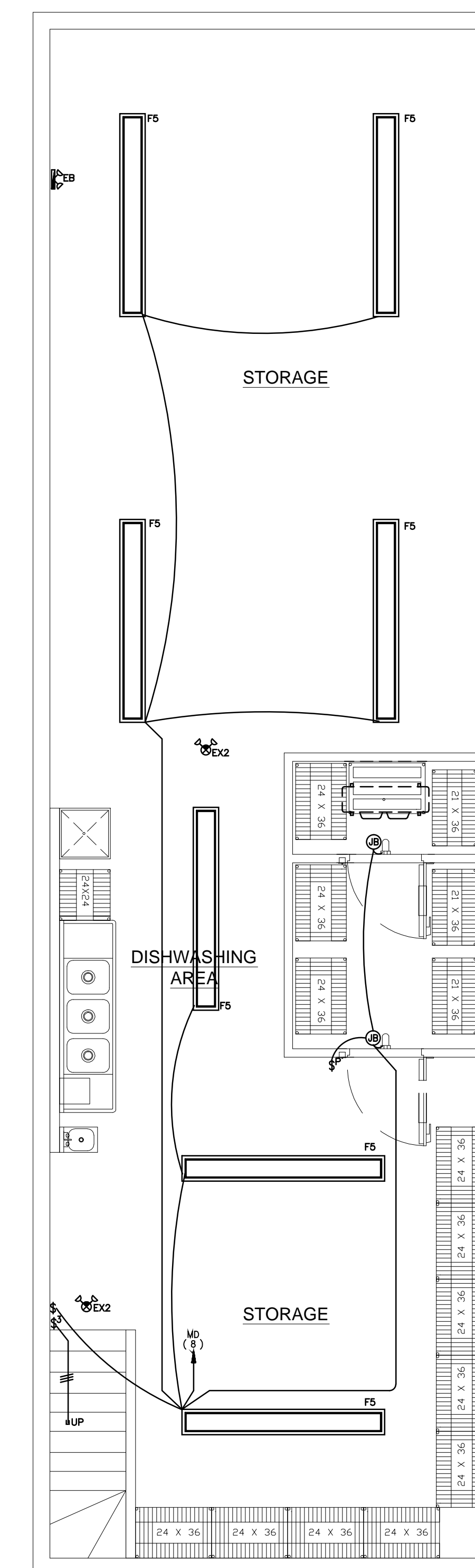
LIGHT FIXTURE SCHEDULE:	
L1	BLACK TRACK AND TRACK HEADS
L2	RECESSED 2'X2' FLUORESCENT LIGHT
L3	RECESSED DOWN LIGHT
L4	SURFACE 1'X4' FLUORESCENT LIGHT
L5	SURFACE 1'X8' FLUORESCENT LIGHT
EX	EXIT SIGN (W/REMOTE CAPACITY)
EX2	EXIT SIGN W/ 2 HEADS (W/REMOTE CAPACITY)
EB	EMERGENCY BATTERY UNIT W/ 2 HEADS



**FIRST FLOOR PLAN- LIGHTING**

Scale: 1/4"=1'-0"

**NOTE:**  
EXIT SIGNS AND EMERGENCY BATTERY  
UNITS ARE TO BE CONNECTED TO THE  
LINE SIDE OF THE LOCAL LIGHTING CIRCUIT.



**BASEMENT PLAN- LIGHTING**

Scale: 1/4"=1'-0"

**NOTE:**  
EXIT SIGNS AND EMERGENCY BATTERY  
UNITS ARE TO BE CONNECTED TO THE  
LINE SIDE OF THE LOCAL LIGHTING CIRCUIT.

FOR PERMIT APPLICATION ONLY  
APRIL, 2013