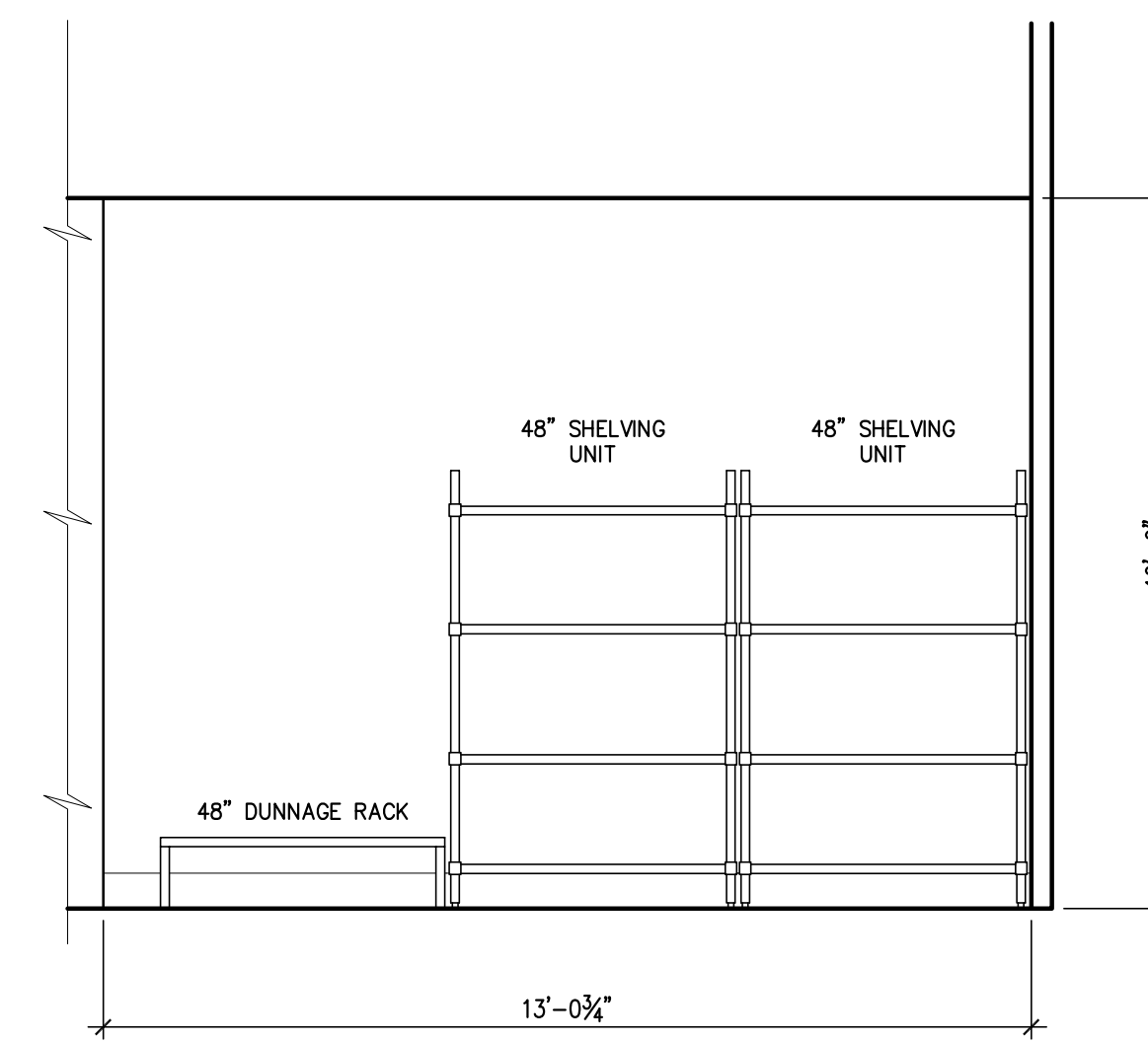
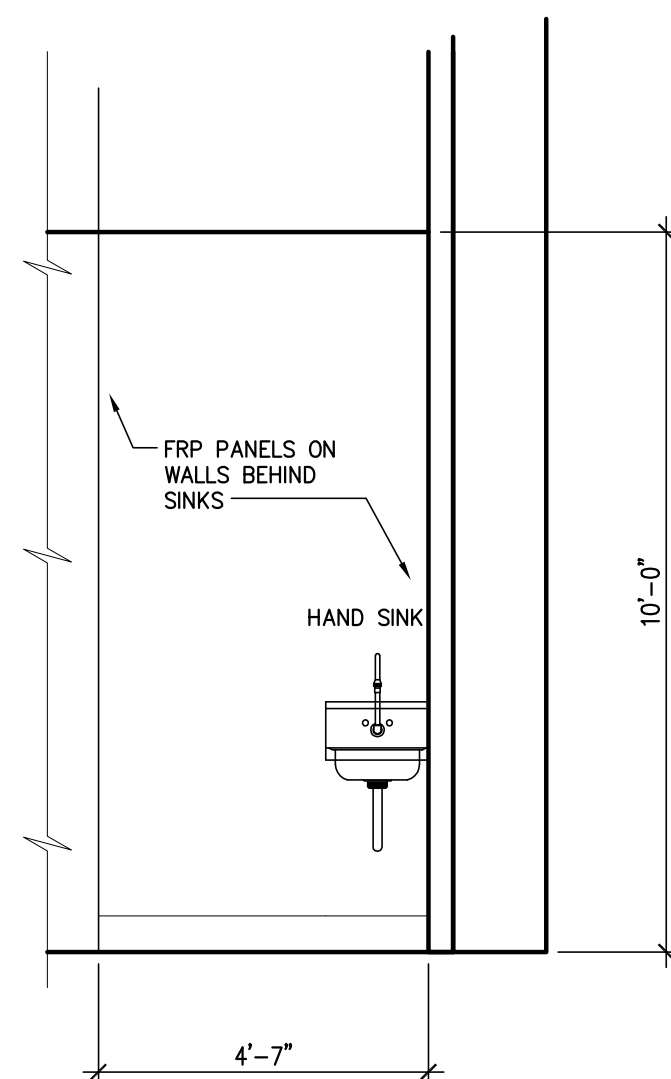


**4A** PREP AREA ELEVATION (SOUTH)  
Scale: 3/8" = 1'-0"

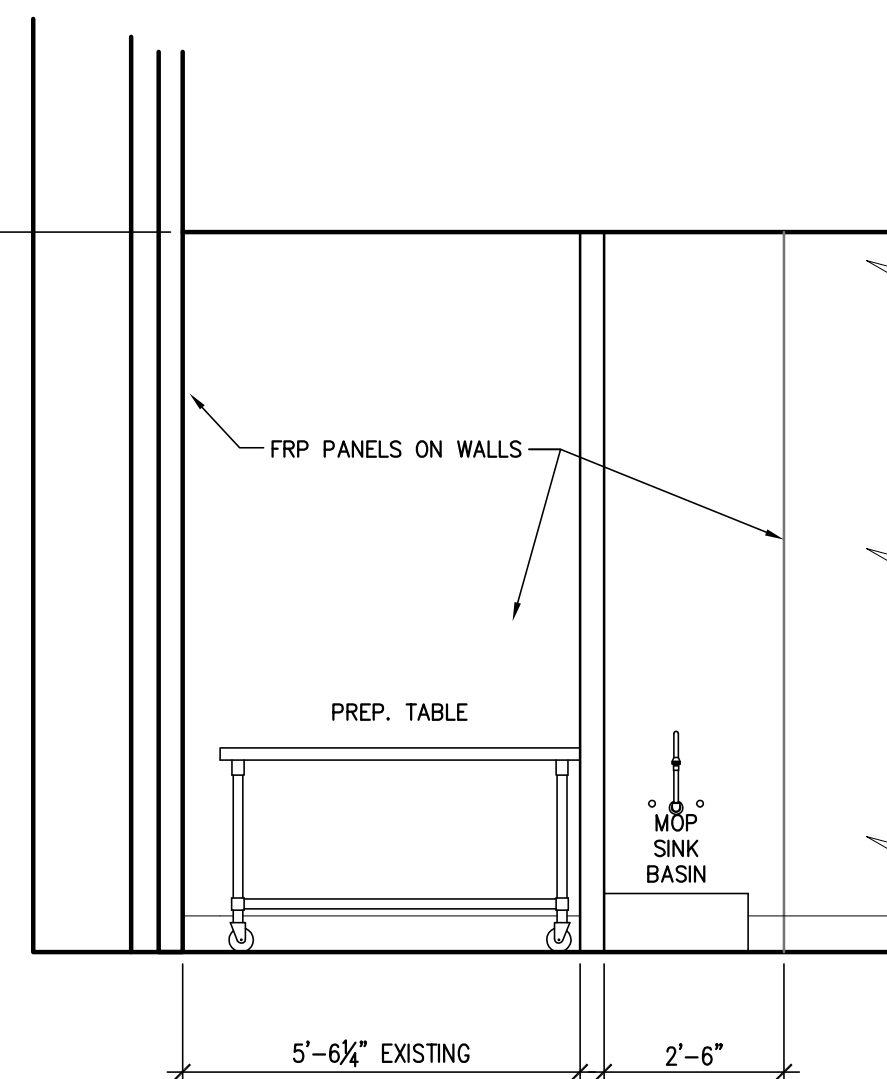
**4C** PREP AREA ELEVATION (EAST)  
Scale: 3/8" = 1'-0"



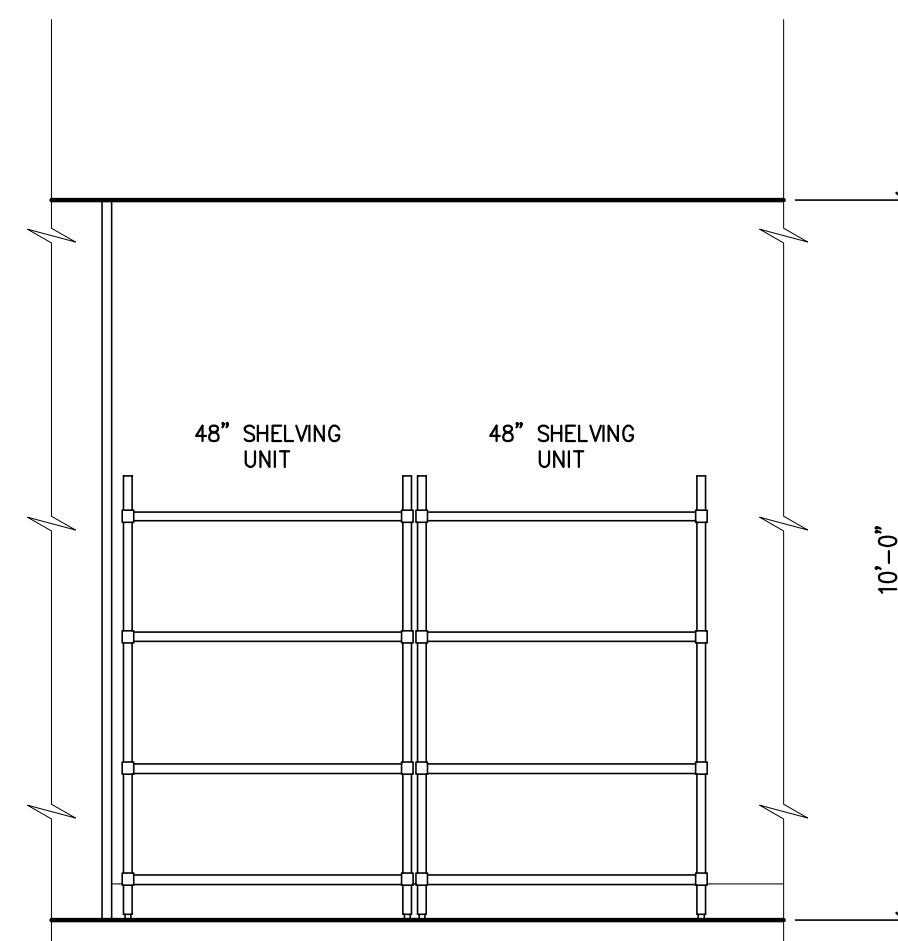
**4E** PREP AREA ELEVATION (NORTH)  
Scale: 3/8" = 1'-0"



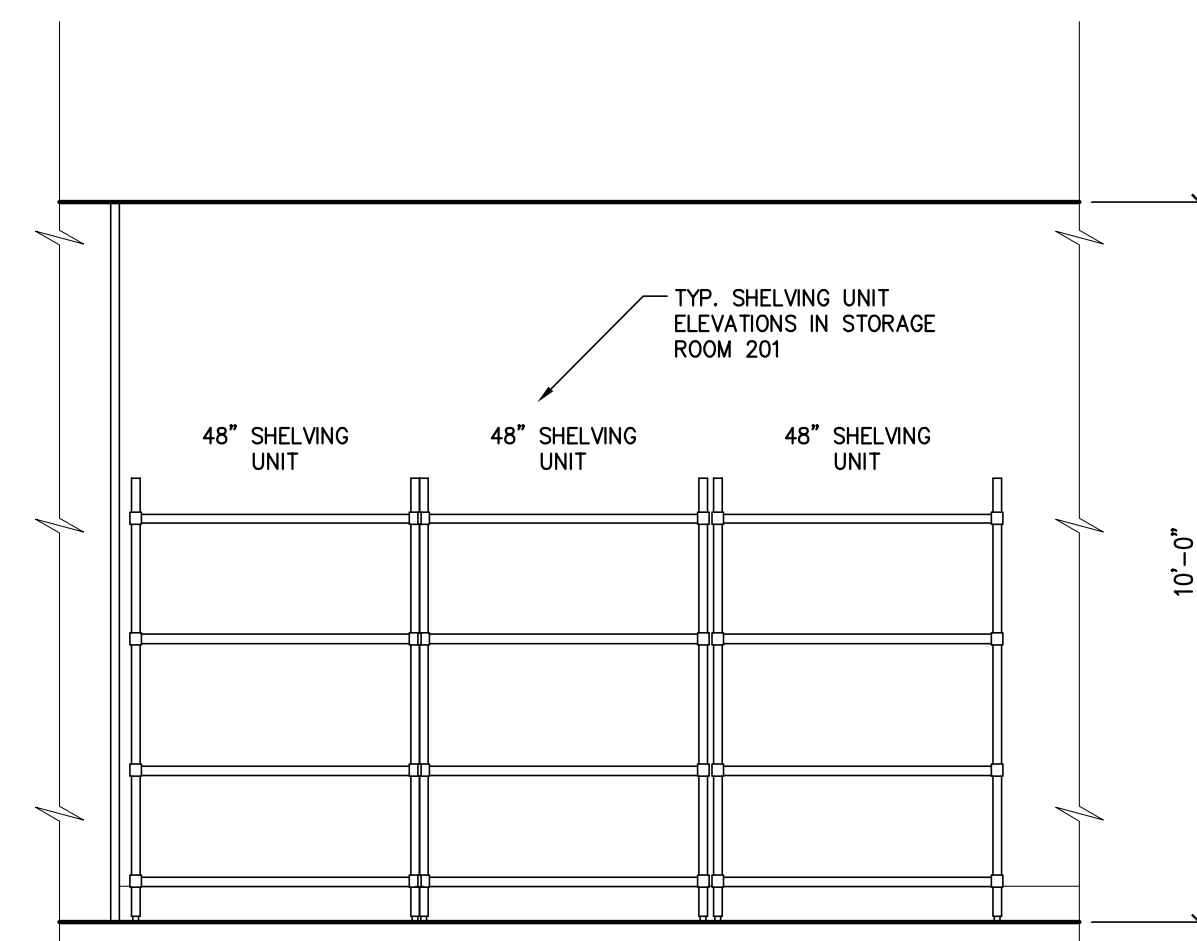
**2A** PREP AREA ELEVATION (WEST)  
Scale: 3/8" = 1'-0"



**2B** PREP AREA ELEVATION (WEST)  
Scale: 3/8" = 1'-0"



**2C** LOWER PREP AREA ELEVATION (NORTH)  
Scale: 3/8" = 1'-0"



**1A** STORAGE 201 ELEVATION (WEST)  
Scale: 3/8" = 1'-0"

BLOCKING @ LIGHTED POSTERS - SEE DETAIL 4A/A5.1  
WOOD BLOCKING TO BE BEHIND ALL LIGHTED POSTERS, BEHIND METAL SHELVING ABOVE YOGURT MACHINES (DETAIL 1A/A4.1), ABOVE METAL SHELVING ABOVE 3-COMP SINK (SIM. TO 1A/A4.1), AT COUNTER AND UPPER COUNTER IN OFFICE (DETAIL 1B/A5.1) AND AT TELEVISION MOUNTING LOCATIONS. (SIM. TO 1A/A4.1 BUT MOUNTED @ 7'-0" A.F.F.)

Professional Seal

Professional Seal

Revisions


**SPECIAL NOTICE:**  
In the event the client consents to, allows, authorizes or approves of changes to any plans, specifications or other construction documents, and these changes are not approved in writing by the design professional, the client recognizes that such changes and the results thereof are not the responsibility of the design professional. Therefore, the client agrees to release the design professional from any liability arising from the construction, use or result of such changes. In addition, the client agrees to the fullest extent permitted by law, to indemnify and hold the design professional harmless from any damage, liability or cost (including reasonable attorney's fees and costs of defense) arising from such changes.

Copyright © 2013 by GODWIN + ASSOCIATES. All rights reserved. No part of this drawing may be reproduced by photocopy or by any other means, or stored, processed, or transmitted in or by any computer or other systems without the prior written permission of GODWIN + ASSOCIATES.

Project Number: 43115  
Drawn By: PMM  
Reviewed By: JAG  
Date: 11.26.13



363 Fore Street  
Portland, Maine 04101

**Interior Elevations  
Prep Area**