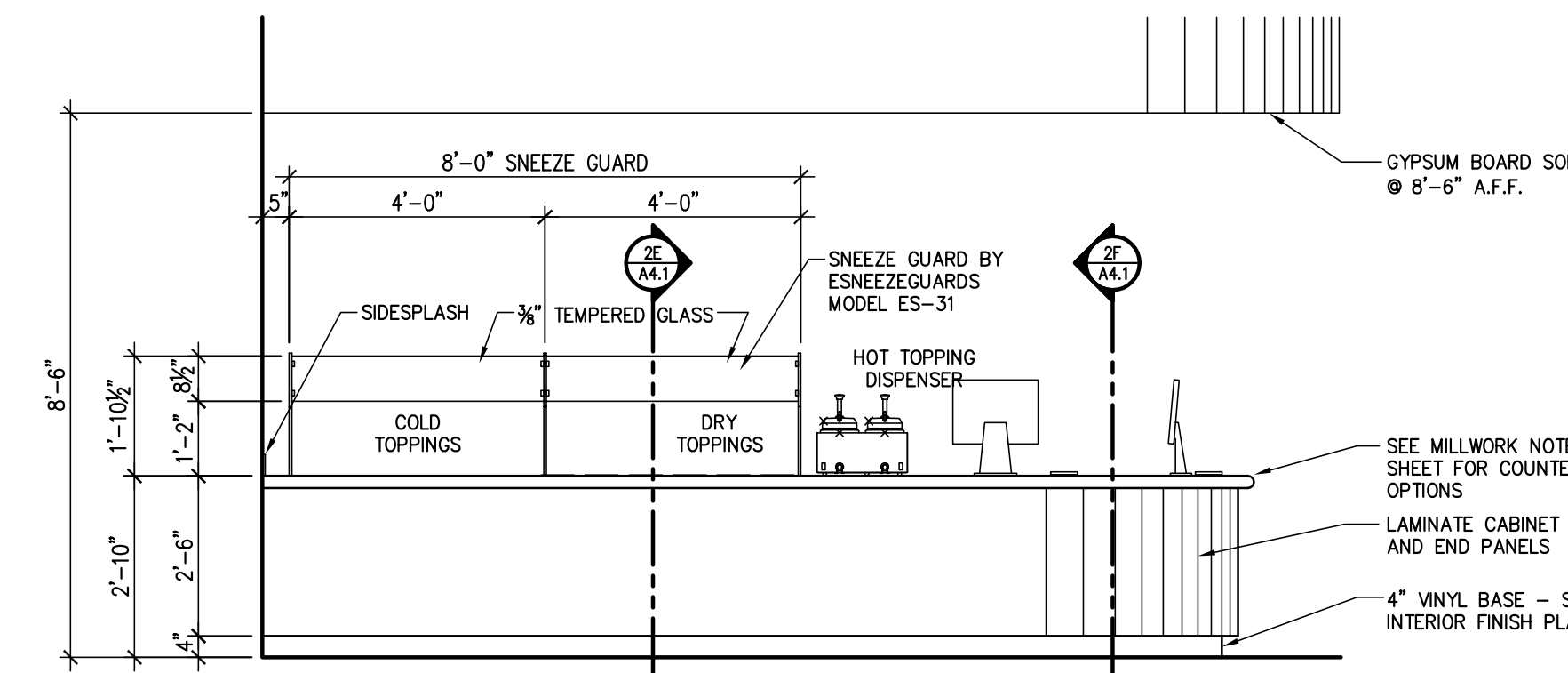
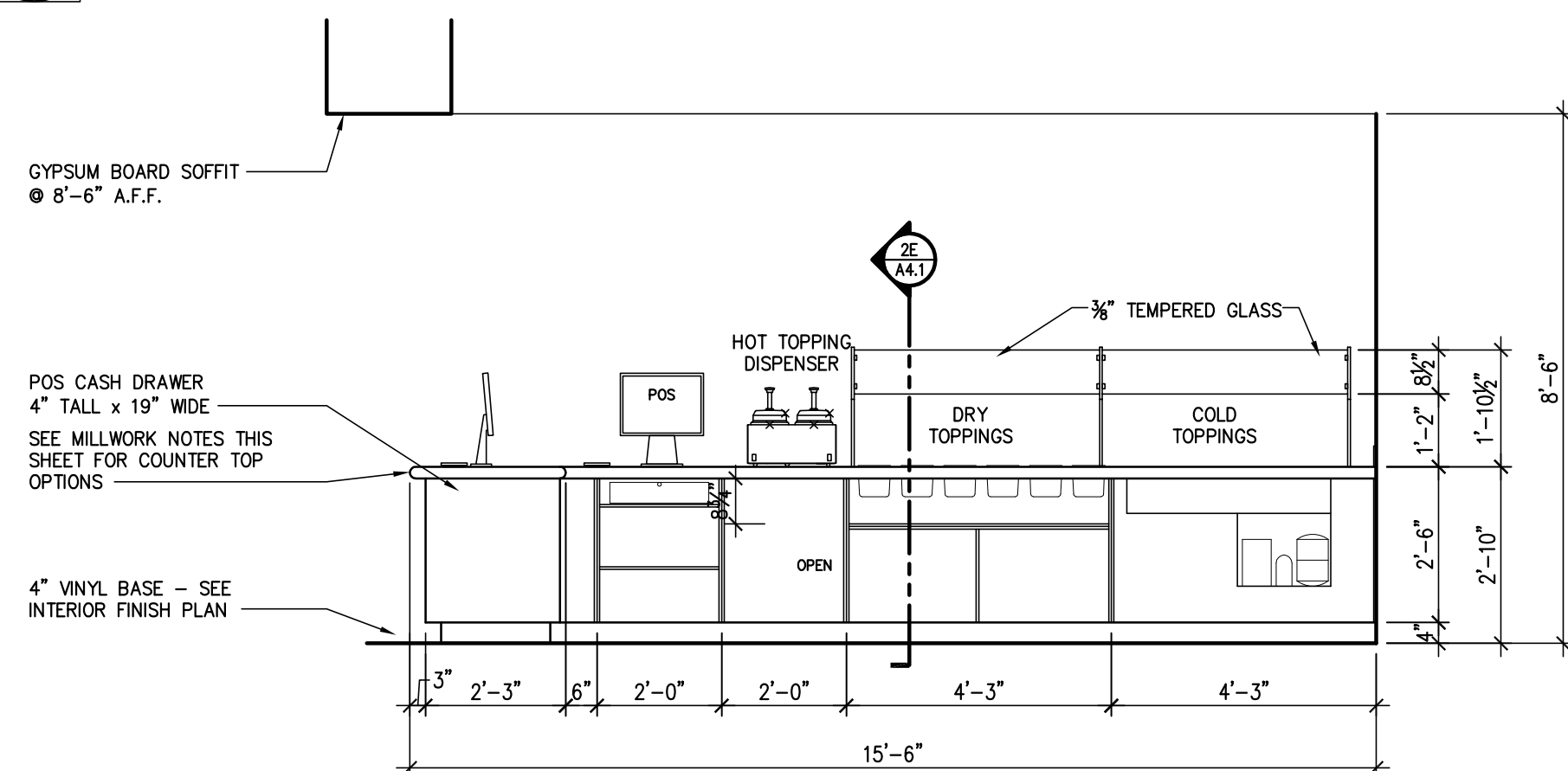


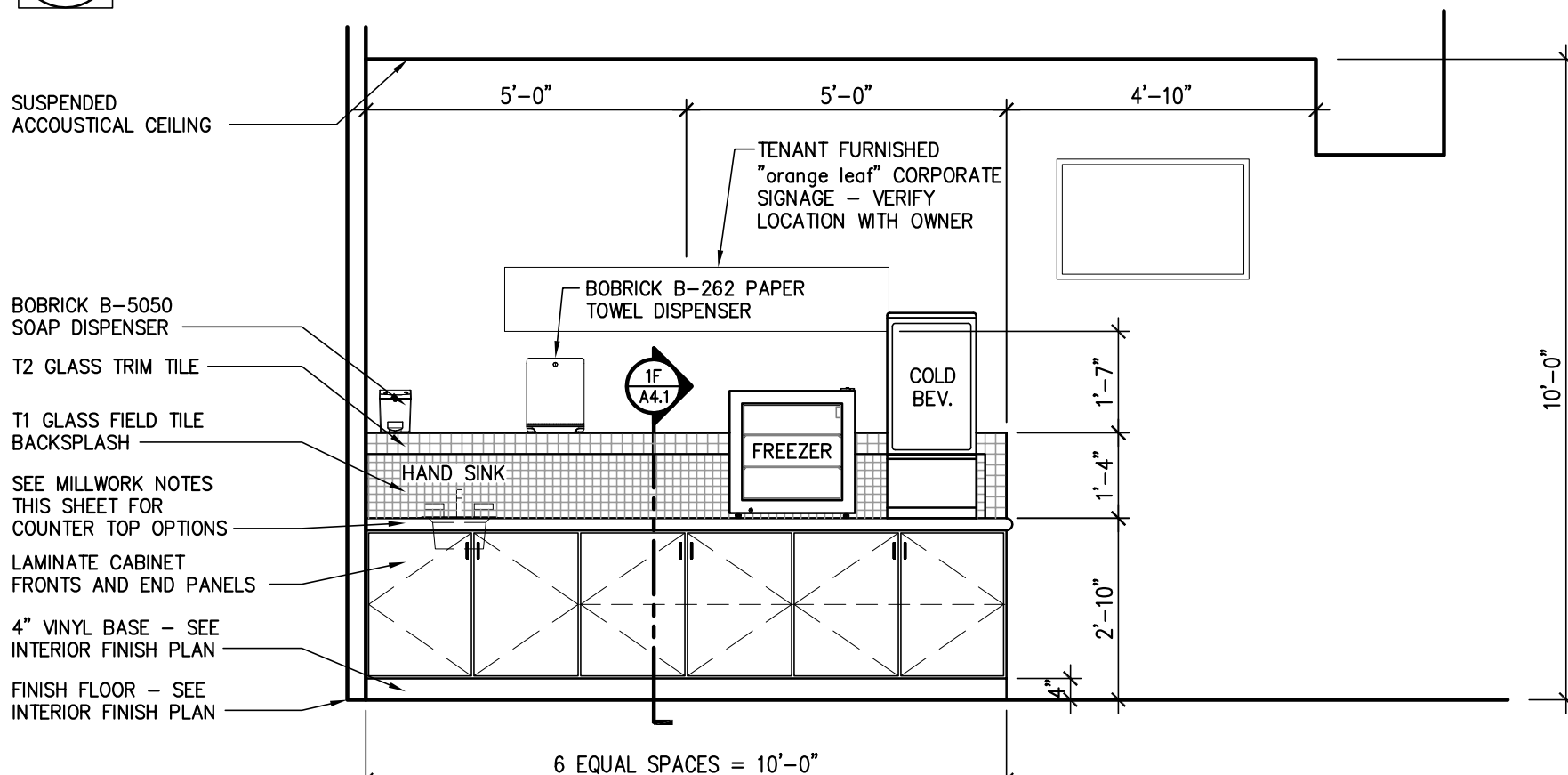
4A ENLARGED PLAN - SALES AREA
Scale: 3/8" = 1'-0"



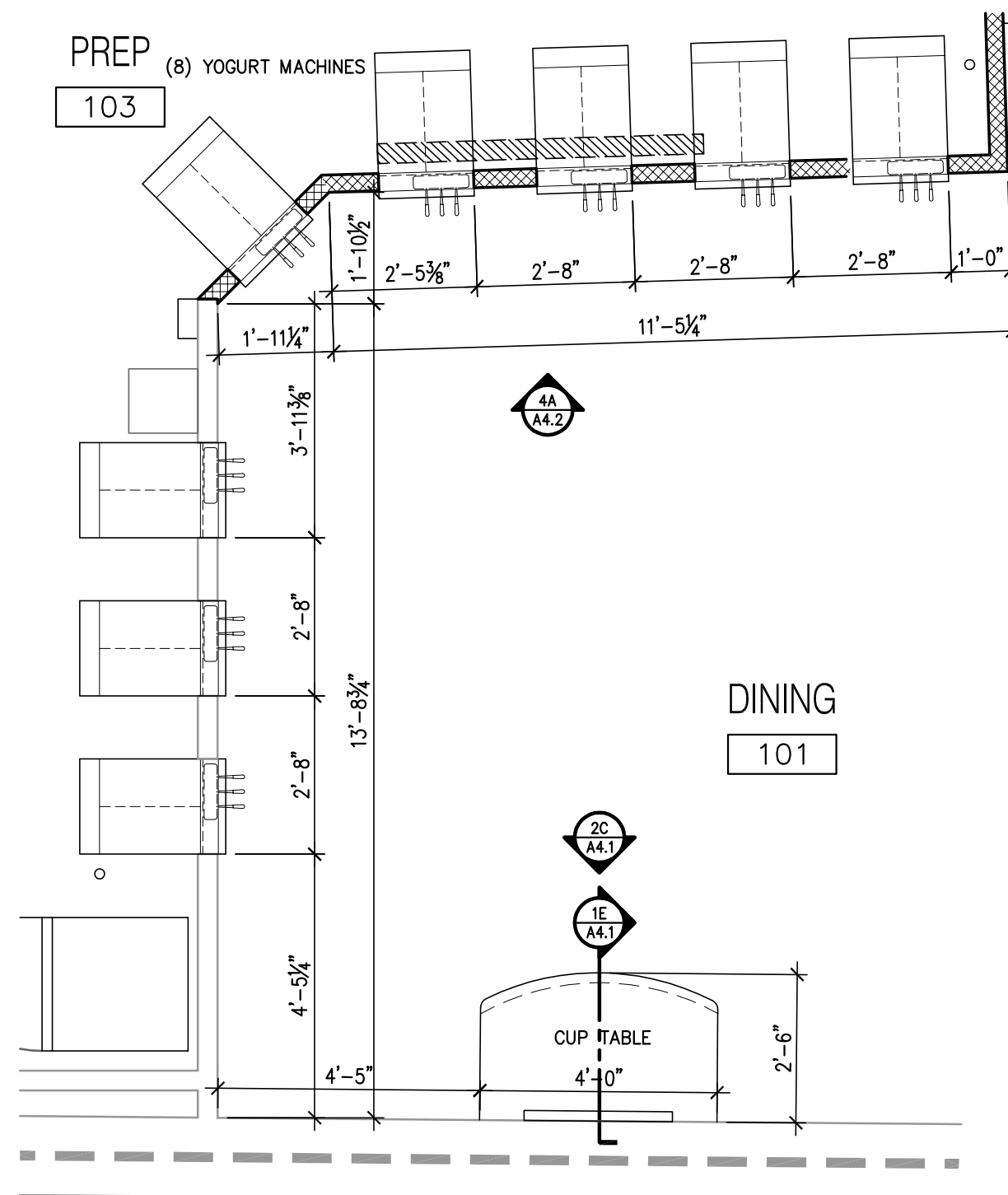
3A INTERIOR ELEVATION - SALES AREA
Scale: 3/8" = 1'-0"



2A INTERIOR ELEVATION - SALES AREA
Scale: 3/8" = 1'-0"

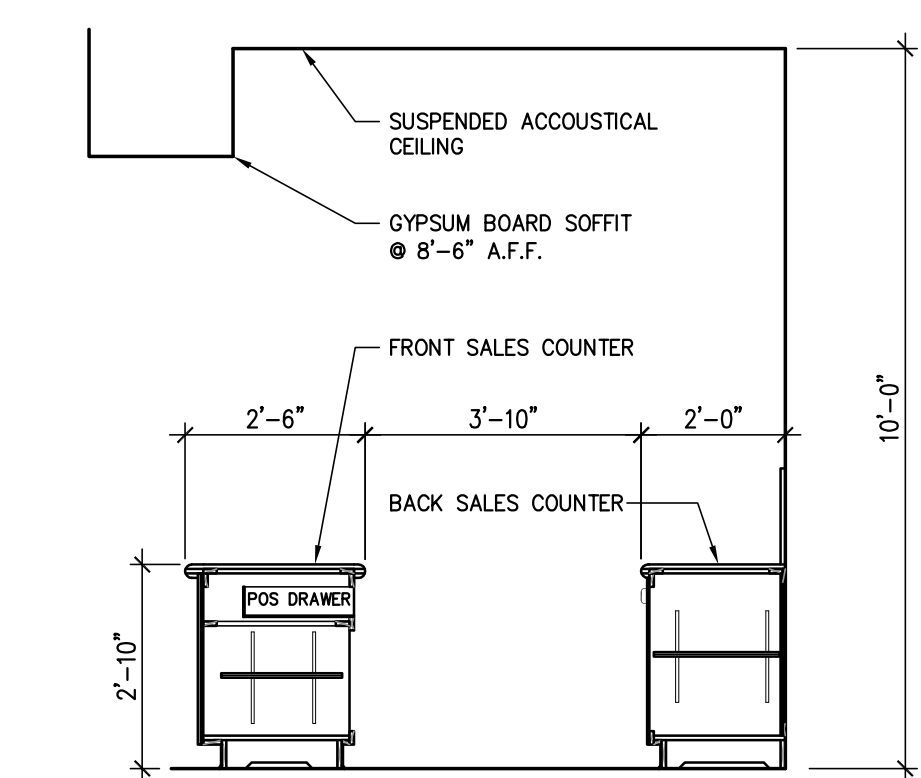


1A INTERIOR ELEVATION - SALES AREA
Scale: 3/8" = 1'-0"

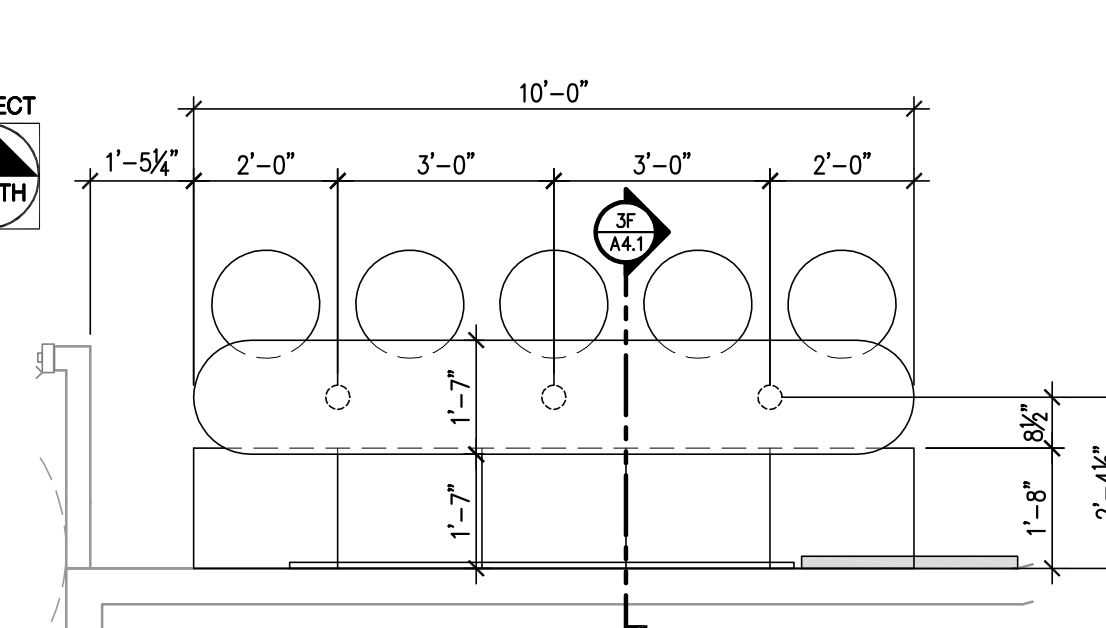


4C ENLARGED PLAN CUP COUNTER / YOGURT MACHINES
Scale: 3/8" = 1'-0"

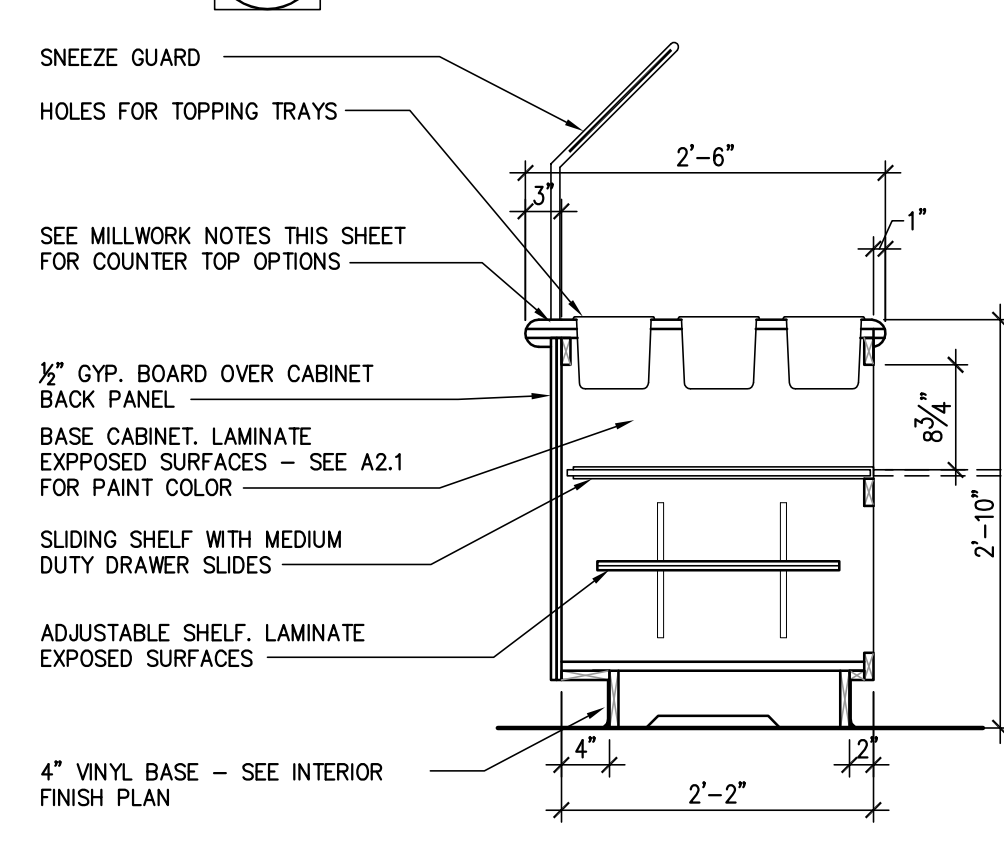
2C INTERIOR ELEVATION - CUP COUNTER
Scale: 3/8" = 1'-0"



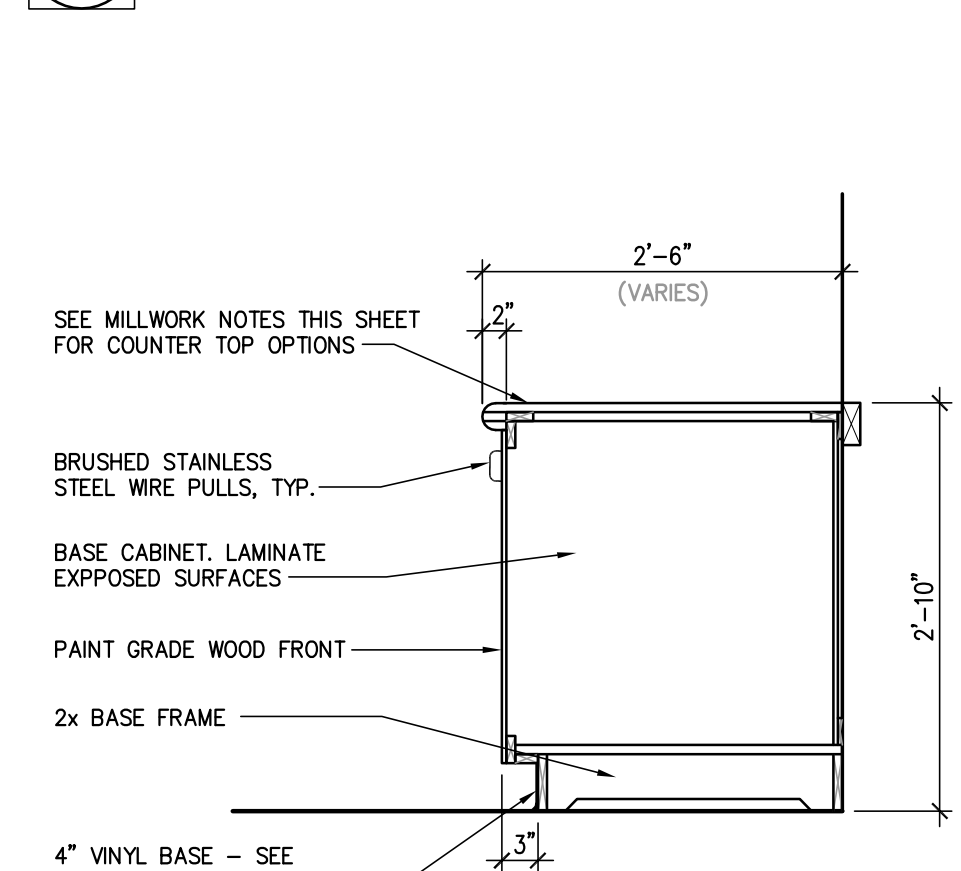
1C COUNTER SECTION - SALES AREA
Scale: 3/8" = 1'-0"



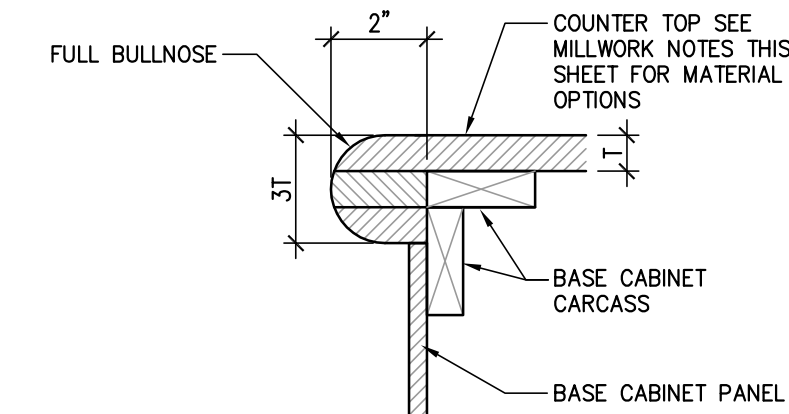
3E ENLARGED PLAN BAR SEATING
Scale: 3/8" = 1'-0"



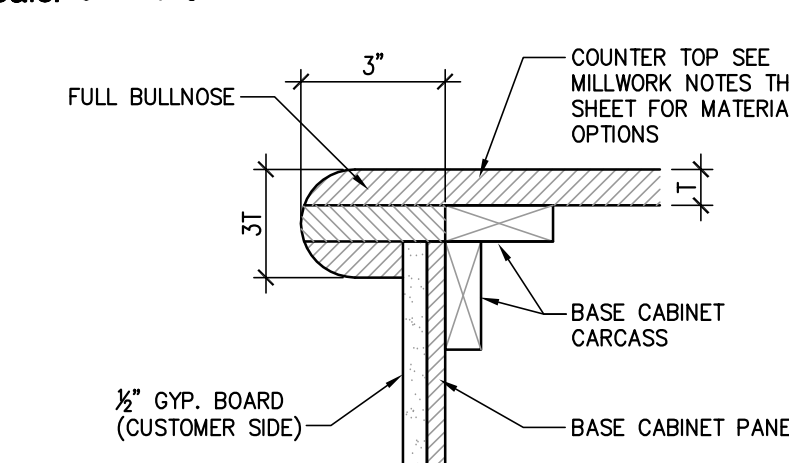
2E FRONT SALES COUNTER SECTION
Scale: 3/4" = 1'-0"



1E CUP COUNTER SECTION
Scale: 3/4" = 1'-0"



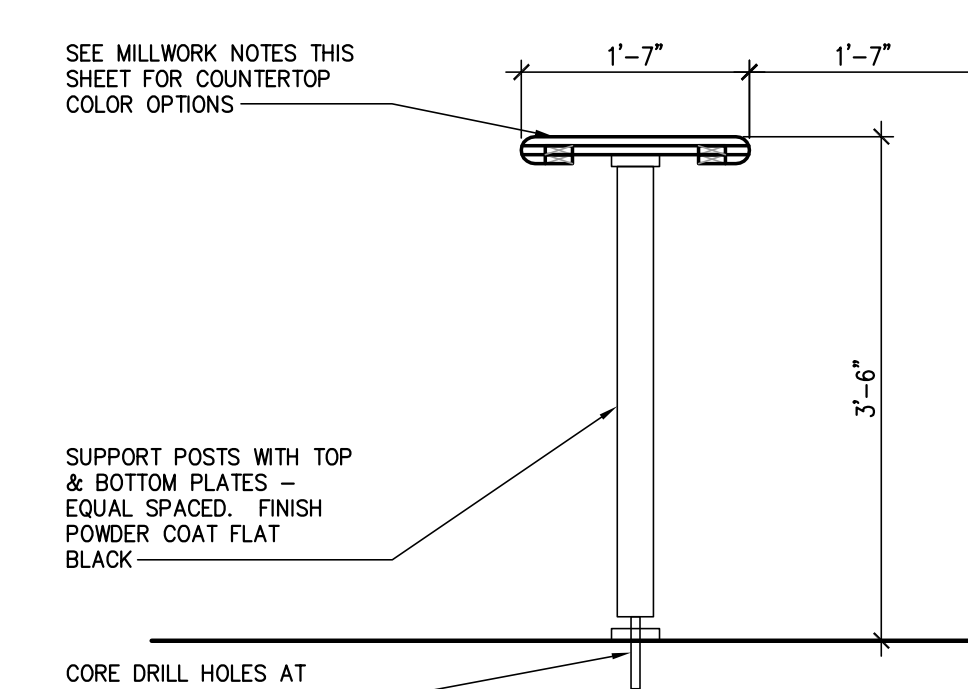
5F CUP COUNTER EDGE DETAIL
Scale: 3" = 1'-0"



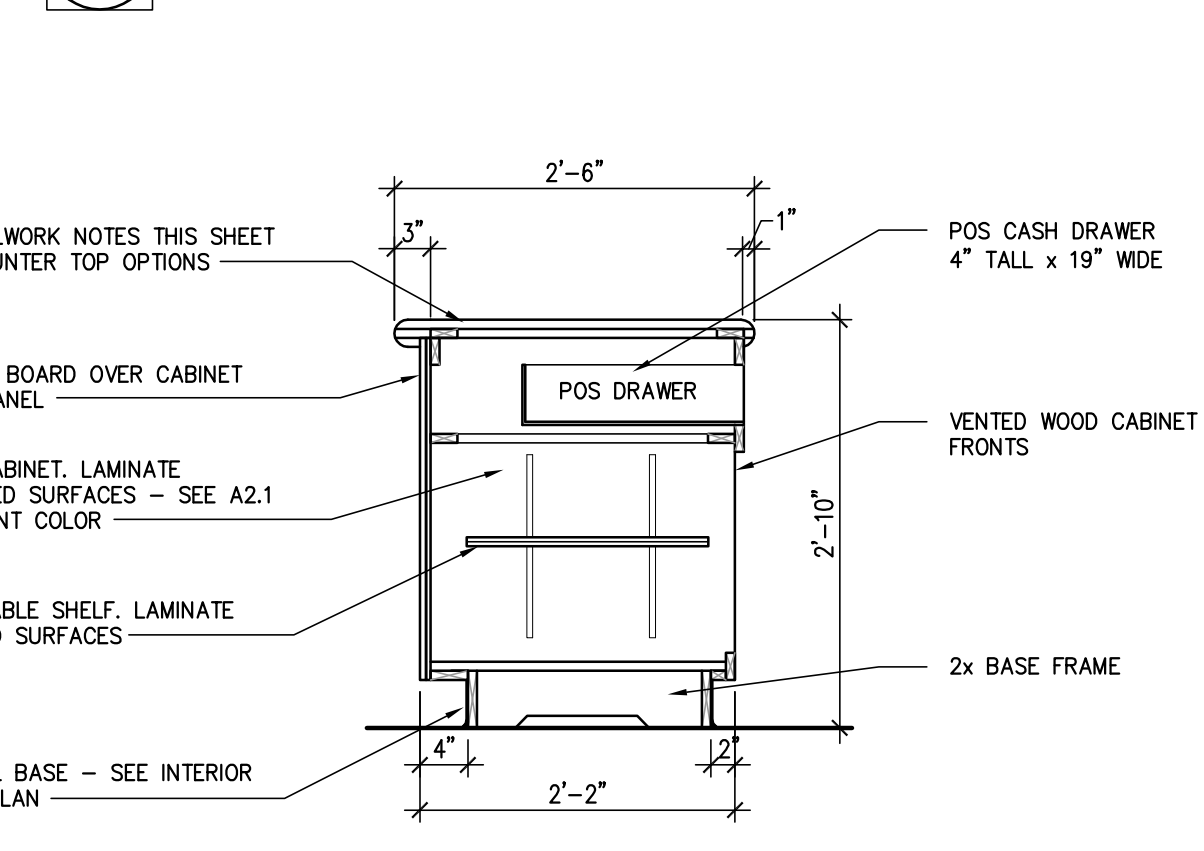
4F SALES COUNTER EDGE DETAIL
Scale: 3" = 1'-0"

MILLWORK NOTES

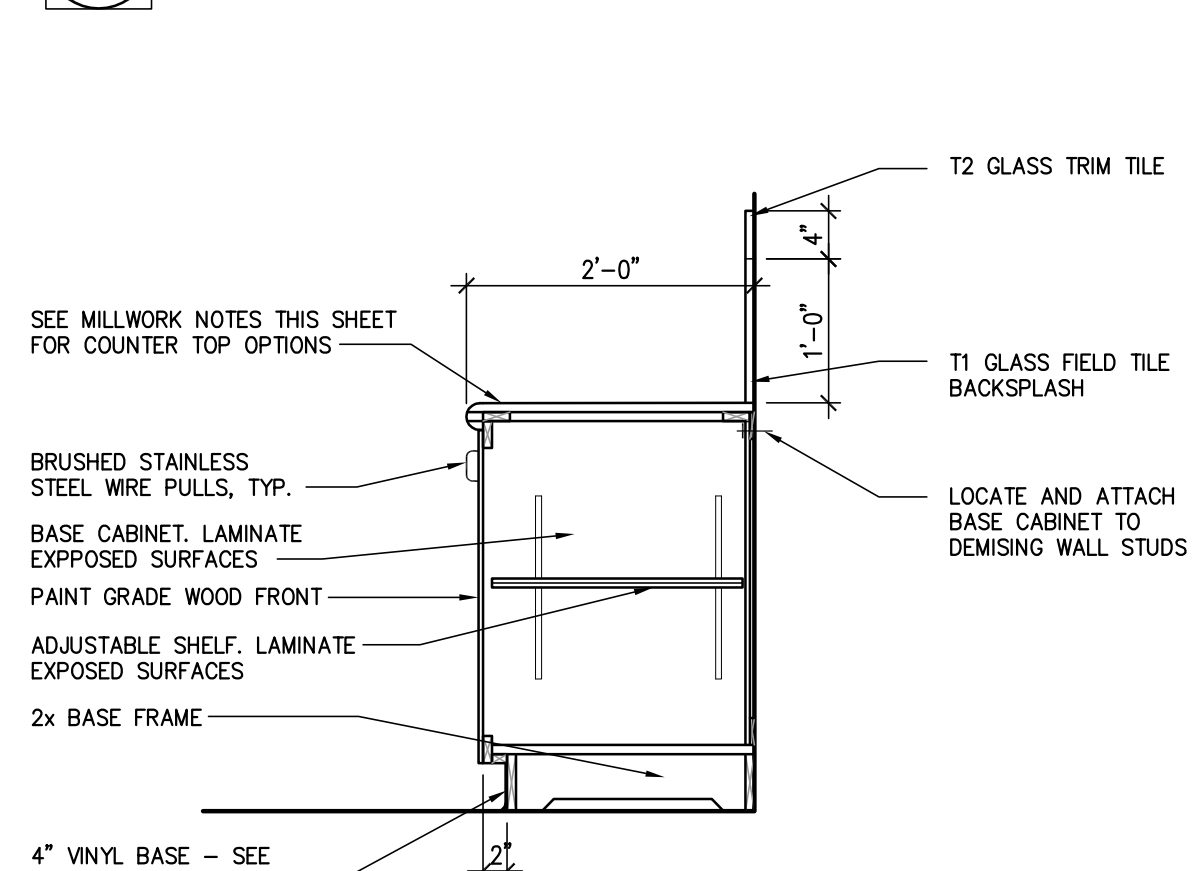
1. ALL LENGTHS OF MILLWORK UNITS SHOWN ON MILLWORK ELEVATIONS ARE EXPECTED FINISH DIMENSIONS.
2. STUD TO STUD DIMENSIONS ARE SHOWN ON PLANS AND ENLARGED PLANS.
3. FIELD VERIFY ALL LENGTHS AVAILABLE FOR MILLWORK UNITS AFTER GYPSUM BOARD IS INSTALLED.
4. CABINET DOORS, AND DRAWER FRONTS SHALL BE PAINTED - SEE SHEET A2.1 FOR COLORS.
5. ALL EXPOSED CABINET SHELVEING SHALL BE LAMINATED.
6. PROVIDE ADJUSTABLE SHELVES THE FULL DEPTH OF ALL CABINETS AS FOLLOWS:
CABINETS UNDER 18" TALL - NONE REQUIRED
CABINETS 18" TO 25" TALL - 1 SHELF
CABINETS 26" TO 35" TALL - 2 SHELVES
7. NO SHELVES ARE REQUIRED AT SINK FRONTS.
8. INSTALL BLOCKING AS REQUIRED FOR ALL CABINETS, SEATING, ETC.
9. FIELD VERIFY ALL CABINET DIMENSIONS PRIOR TO FABRICATION. PAY SPECIAL ATTENTION TO WHERE EQUIPMENT IS AND NOTIFY ARCHITECT OF DISCREPANCIES PRIOR TO FABRICATION.
10. CLEAR KNEE SPACE SHALL BE 25" HIGH UNLESS NOTED OTHERWISE.
11. ALL JOINTS AND CONNECTIONS SHALL BE "BISCUITED".
12. PROVIDE SEALANT AROUND ALL MILLWORK.
13. COUNTERTOP COLOR OPTIONS: CORIAN COLOR: CAMEO WHITE, LIVINGSTONE: QUIET WHITE, LG SURFACES: IVORY WHITE



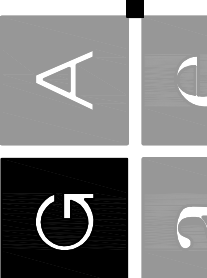
3F BAR STYLE COUNTER SECTION
Scale: 3/4" = 1'-0"



2F FRONT SALES COUNTER SECTION
Scale: 3/4" = 1'-0"



1F BACK SALES COUNTER SECTION
Scale: 3/4" = 1'-0"



Professional Seal

Professional Seal

Revisions

No.	Description

SPECIAL NOTICE:
In the event the client consents to, allows, authorizes or approves of changes to any plans, specifications or other construction documents, and these changes are not approved in writing by the design professional, the client recognizes that such changes and the results thereof are not the responsibility of the design professional. Therefore, the client agrees to release the design professional from any liability arising from the construction, use or result of such changes. In addition, the client agrees to the fullest extent permitted by law, to indemnify and hold the design professional harmless from any damage, liability or cost (including reasonable attorney's fees and costs of defense) arising from such changes.

Project Number: 43115
Drawn By: PMM
Reviewed By: JAG
Date: 11.26.13



363 Fore Street
Portland, Maine 04101

Enlarged Plans, Millwork Elevations and Sections

CONSTRUCTION DOCUMENTS
Sheet Number