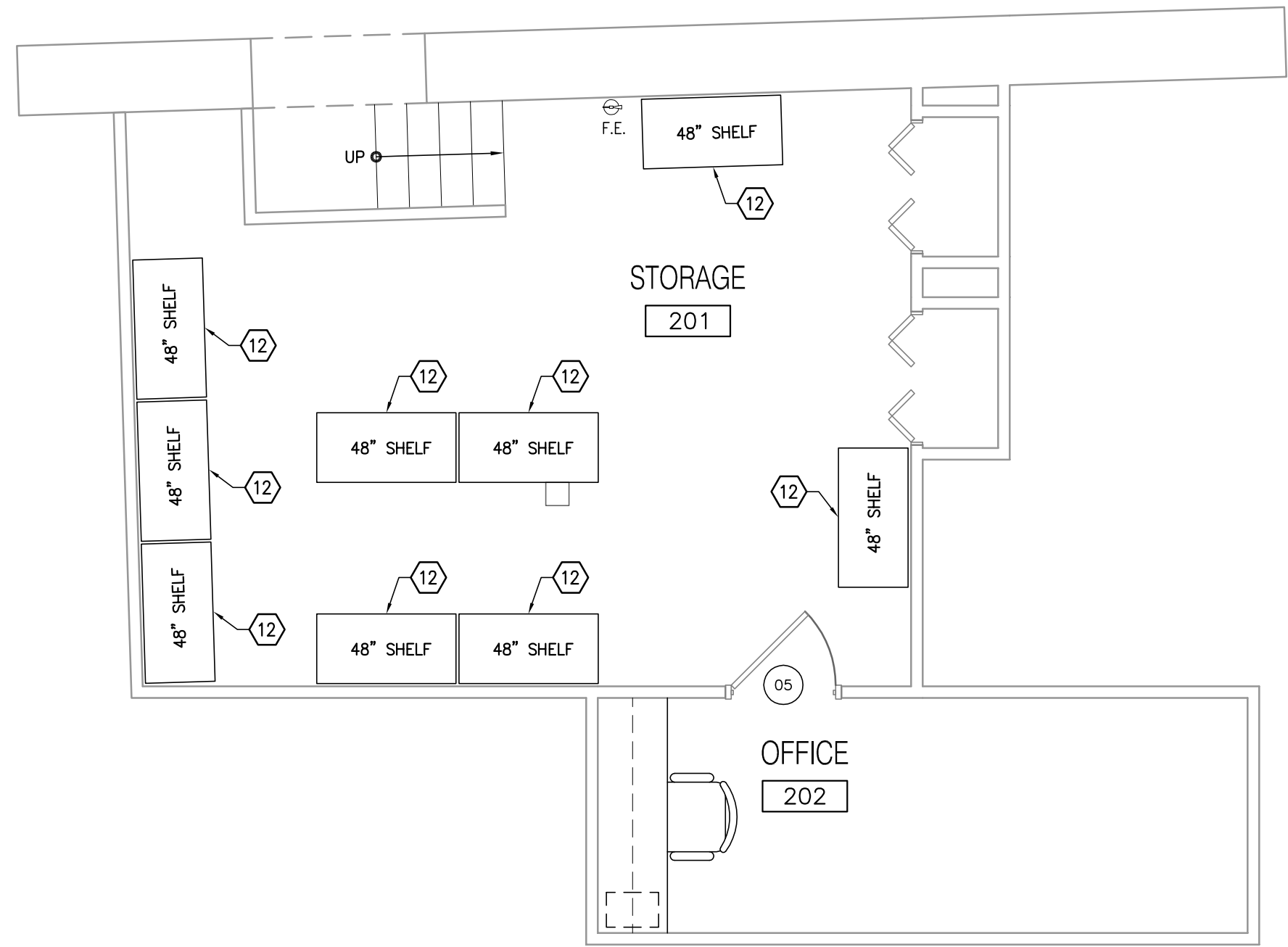
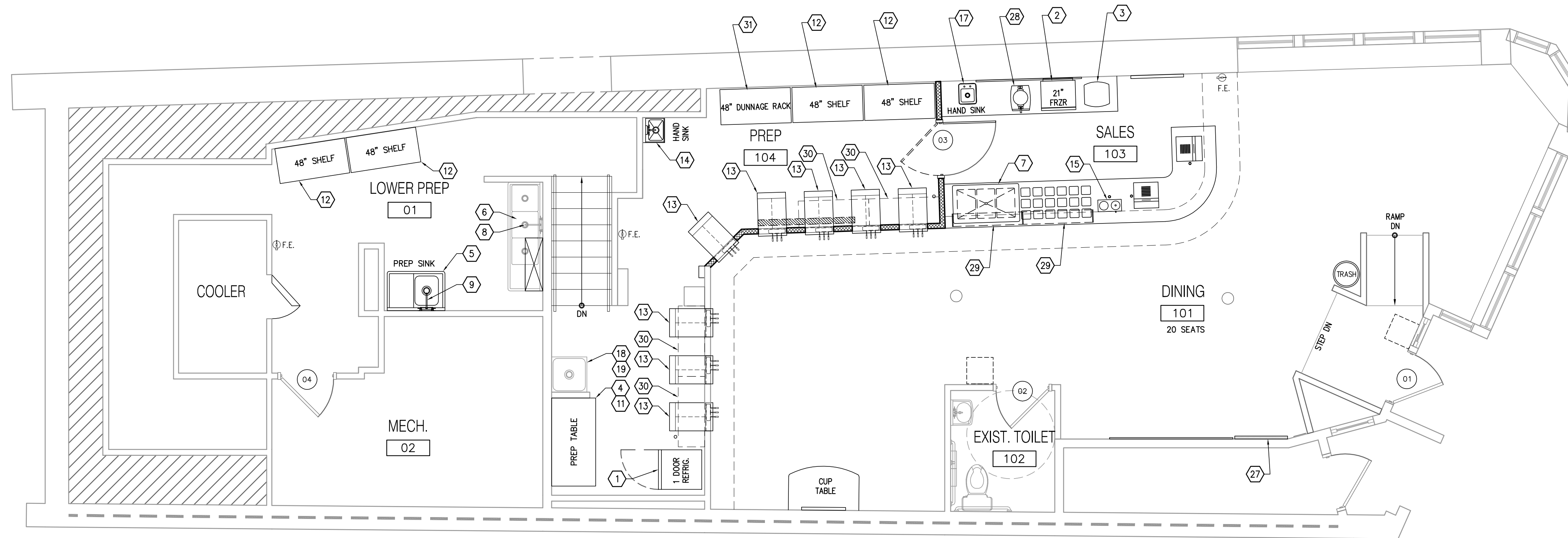
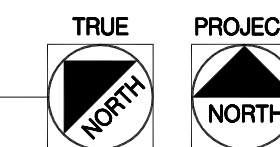


EQUIPMENT SCHEDULE					
ABBREVIATIONS	DESCRIPTION	MANUFACTURER	MODEL NUMBER	COLOR	REMARKS
1	1-DOOR REFRIGERATOR	TRUE FOOD SERVICE EQUIPMENT	T-19	STANDARD	3 SHELVES, 4" CASTORS, 1/2 HP, 8.9 AMPS
2	COUNTER TOP FREEZER	SUMMIT	SCFU386	STAINLESS STEEL	2.0 CF., 2 SHELVES, 115 V. AC/60HZ, 1.5 AMPS
3	DIAMOND SHOWCASE	TURBO AIR	950061 / CRT-77-2R	GLASS	3.0 CU. FT., 3 SHELVES, 1/2 HP, 2.6 AMPS
4	STAINLESS STEEL TABLE	TURBO AIR	TSW-3072SS	STAINLESS STEEL	30" x 60" STAINLESS STEEL TOP WITH UNDERSHELF
5	ONE COMPARTMENT SINK	ADVANCE TABCO	FE-1-1812-18R-X	STAINLESS STEEL	18"x18" BOWL SIZE, WITH 18" DRAINBOARD ON RIGHT
6	THREE COMPARTMENT SINK	EXISTING	EXISTING	STAINLESS STEEL	EXISTING
7	REFRIGERATED COLD PAN	WELLS MANUFACTURING	RCP-300	STAINLESS STEEL	115 VOLTS, 805 WATTS, 1/4 HP, 7.0 AMPS, WITH POWER CORD
8	PRE-RINSE FAUCET	EXISTING	EXISTING		EXISTING
9	FAUCET	KROWNE	12-812		8" O.C. WALL MOUNT, 12" SWING NOZZLE, LEVER HANDLES
10	HAND MIXER	WARING	WSB50		12" STAINLESS STEEL REMOVABLE SHAFT, 120 VOLTS, 1 HP, 6.25 AMPS, 750 WATTS
11	CASTERS	FOCUS FOODSERVICE	180907		5" FOR STAINLESS STEEL TABLE
12	DRY STORAGE SHELVING	METRO	2448	CHROME	
13	YOGURT MACHINE	STOELTING	F231		208-240 VAC, 60 HZ, 1 PHASE, 12 AMP, NEMA 6-20P POWER CORD, 12,000 BTU/HR (R-40A) 3" MINIMUM AIR SPACE EACH SIDE, 3/8" N.P.T. WATER AND DRAIN FITTINGS
14	HAND SINK	JOHN BOOS	PBHS-W-1410-P-SSLR	STAINLESS STEEL	WALL MOUNT 14" WIDE x 10" LENGTH x 5" DEEP, WITH LEFT AND RIGHT SPLASH GUARDS
15	TWIN FUDGE SERVER	SERVER PRODUCTS	81230	STAINLESS STEEL	STAINLESS STEEL PUMPS, ADJUSTABLE THERMOSTATS, (2) 3 QUART STAINLESS STEEL JARS #84409 AND STORAGE LID #84008 AND 10" LADLE #82561
16	CHILLER	COLD SHOT	ACWC-90-EOR		ROOF MOUNTED SEE SHEET P2.1 FOR SPECIFICATIONS
17	DROP-IN SINK	ADVANCE TABCO	DI-1-25	STAINLESS STEEL	10" WIDE x 14" FRONT-TO-BACK x 5" DEEP BOWL, WITH DECK MOUNTED GOOSENECK FAUCET
18	MOP SINK	EXISTING	EXISTING		EXISTING
19	MOP SINK FAUCET	EXISTING	EXISTING		EXISTING
20	PLASTIC FOOD PANS	CAMBRO			1/8" SIZE - 24", 4" AND 6" DEEP, VERIFY SIZE AND QUANTITY WITH OWNER
21	STAINLESS STEEL FOOD PANS				1/8" SIZE - 24", 4" AND 6" DEEP, VERIFY SIZE AND QUANTITY WITH OWNER
22	PLASTIC PAIL	CONTINENTAL CARLISLE	2200 (CONTAINER) 1202 (LD)		5 GALLON, WITH LID, VERIFY QUANTITY WITH OWNER
23	PLASTIC CONTAINER	CONTINENTAL CARLISLE	0600 (CONTAINER) 0603 (LD)		6 QUART, WITH LID, VERIFY QUANTITY WITH OWNER
24	PLASTIC STEEL ADAPTER BAR		20		20" LONG
25	PLASTIC TONG	CONTINENTAL CARLISLE	4606	WHITE	VERIFY QUANTITY WITH OWNER
26	1/2 OUNCE PLASTIC SPOON	CONTINENTAL CARLISLE	4460	WHITE	VERIFY QUANTITY WITH OWNER
27	BACK LIT POSTER	SIGNS NOW			CONTACT MICHAEL HUGHES (405)321-2224 OF WWW.SIGNSNOWORMAN.COM
28	WAFFLE MAKER	OLD WORLD CONE			12.5 AMPS, 1500 WATTS (206)241-0333 OR WWW.OLDWORLD.CONE.COM
29	SNEEZE GUARD	ESNEEZE GUARDS	ES-31		3 BAYS, 96" TOTAL LENGTH (800)690-0002 OR WWW.ESNEEZE GUARDS.COM
30	BULK STORAGE SHELVING	METRO		CHROME	18x48 SHELVING ON DIRECT WALL MOUNTS
31	DUNNAGE RACK	ADVANCE TABCO	DUN-2448	ALUMINUM	24x48 - 12" HEIGHT, 2,000 LB LOAD CAPACITY



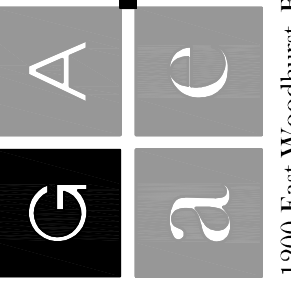
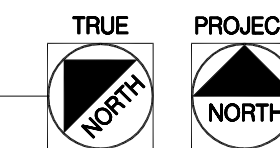
UPPER LEVEL EQUIPMENT PLAN

Scale: 1/4" = 1'-0"



MAIN & LOWER LEVEL EQUIPMENT PLAN

Scale: 1/4" = 1'-0"



Professional Seal

Professional Seal

Revisions

SPECIAL NOTICE:
In the event the client consents to, allows, authorizes or approves of changes to any plans, specifications or other construction documents, and these changes are not approved in writing by the design professional, the client recognizes that such changes and the results thereof are not the responsibility of the design professional. Therefore, the client agrees to release the design professional from any liability arising from the construction, use or result of such changes. In addition, the client agrees to the fullest extent permitted by law, to indemnify and hold the design professional harmless from any damage, liability or cost (including reasonable attorney's fees and costs of defense) arising from such changes.

Copyright © 2013 by GODWIN + ASSOCIATES. All rights reserved. No part of this drawing may be reproduced by photocopy or by any other means, or stored, processed, or transmitted in or by any computer or other systems without the prior written permission of GODWIN + ASSOCIATES.

Project Number: 43115
Drawn By: PMM
Reviewed By: JAG
Date: 11.26.13



363 Fore Street
Portland, Maine 04101

Equipment Plan and Schedule

CONSTRUCTION DOCUMENTS

Sheet Number

A3.1