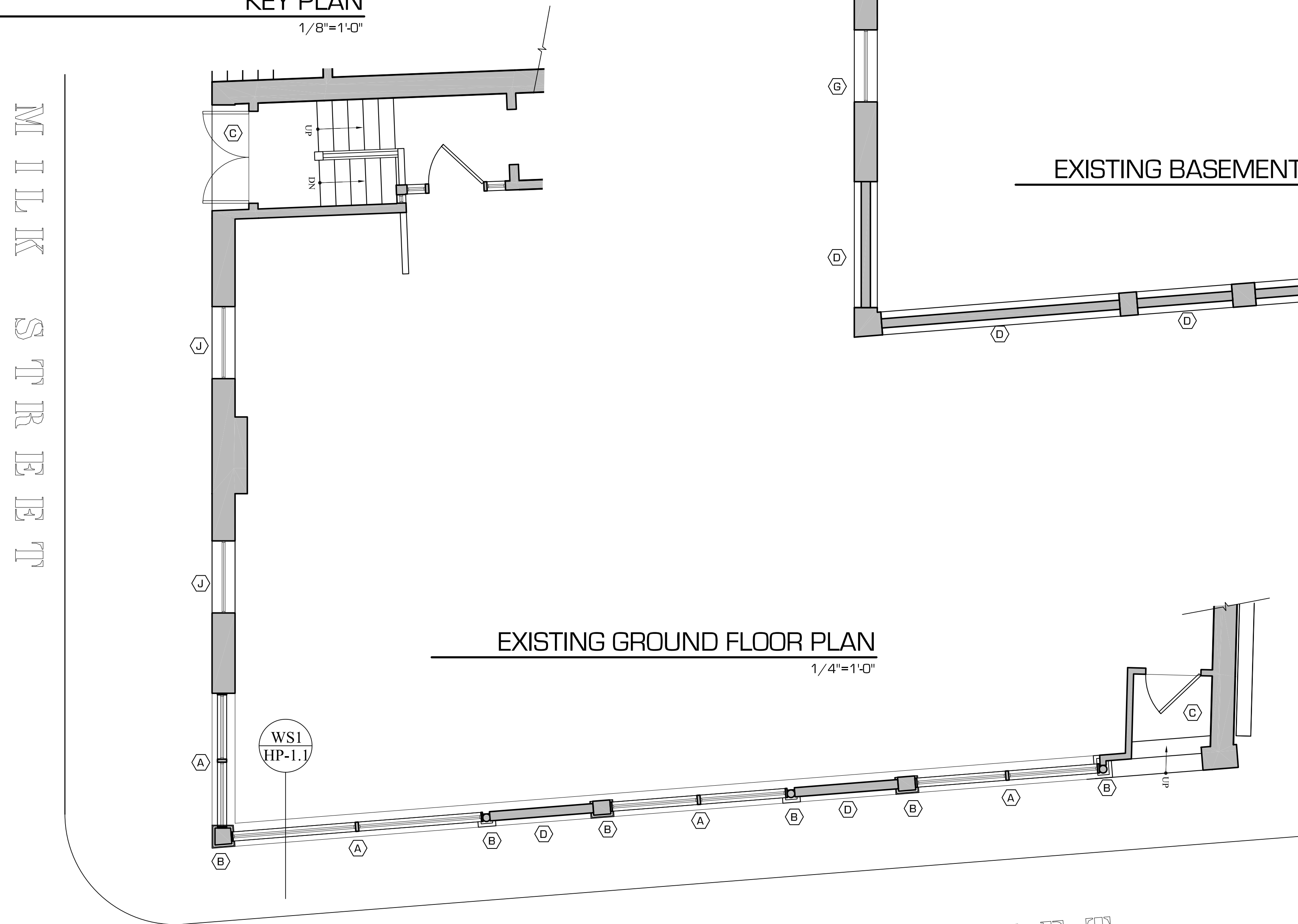
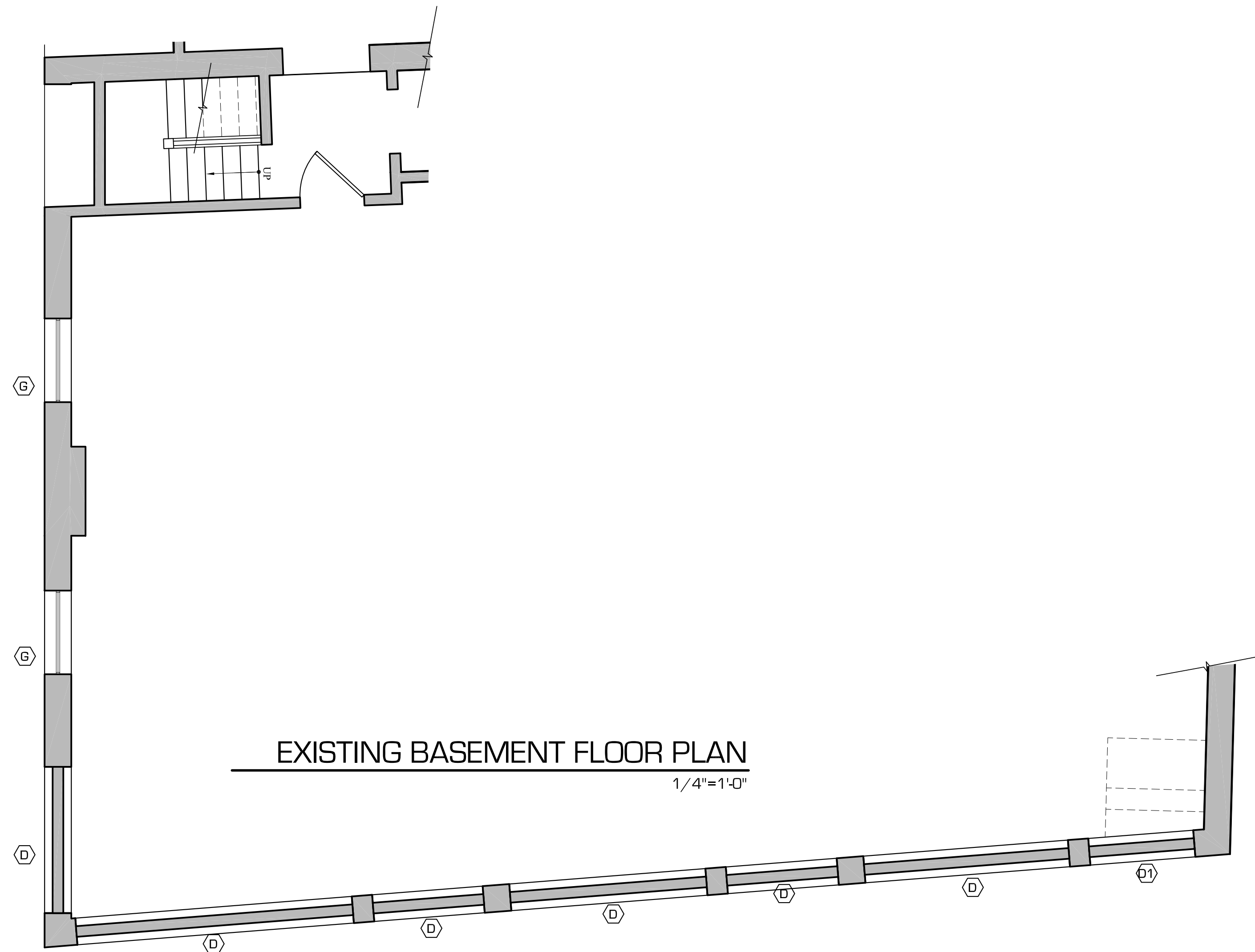


KEY PLAN
1/8"=1'-0"



EXISTING GROUND FLOOR PLAN
1/4"=1'-0"



EXISTING BASEMENT FLOOR PLAN
1/4"=1'-0"

FACADE RENOVATION NOTES:

- (A) EXISTING STOREFRONT TO BE REPAIRED, NEW CLEAR GLAZING, FRAMES & SASHES.
- (B) METAL DECORATIVE COLUMNS WITH GRANITE PIERS TO REMAIN. NEW PAINT AT COLUMNS.
- (C) ENTRY TO BE RECONFIGURED.
- (D) WOOD PANEL STOREFRONT TO BE REMOVED.
- (D1) ENTRY STAIRS TO BE REMOVED.
- (E) STEEL FREEZE TO REMAIN, NEW PAINT.
- (F) NO WORK AT BRICK FACADE, TYP.
- (G) EXISTING IRON BARS AT BASEMENT BULKHEAD WINDOWS TO BE REMOVED
- (H) PRESERVE GRANITE BASES, TYP.
- (I) EXISTING DOUBLE HUNG WINDOWS TO REMAIN, TYP.
- (J) EXISTING DOUBLE HUNG WINDOWS TO BE REPLACED WITH WOOD SASH REPLACEMENT KITS. SUBMISSION FOR STAFF REVIEW BY WINDOW REPRESENTATIVE.
- (K) EXISTING SIGNAGE LOCATION (SEPARATE SIGN PERMIT BY TENANT)