

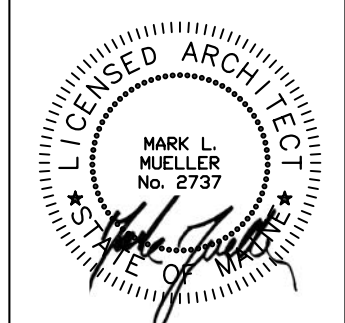
WALL LEGEND

EXISTING WALL	
PROPOSED WALL	
DEMOLISHED WALL	
FIRE RATED WALL	

LIFE SAFETY LEGEND:

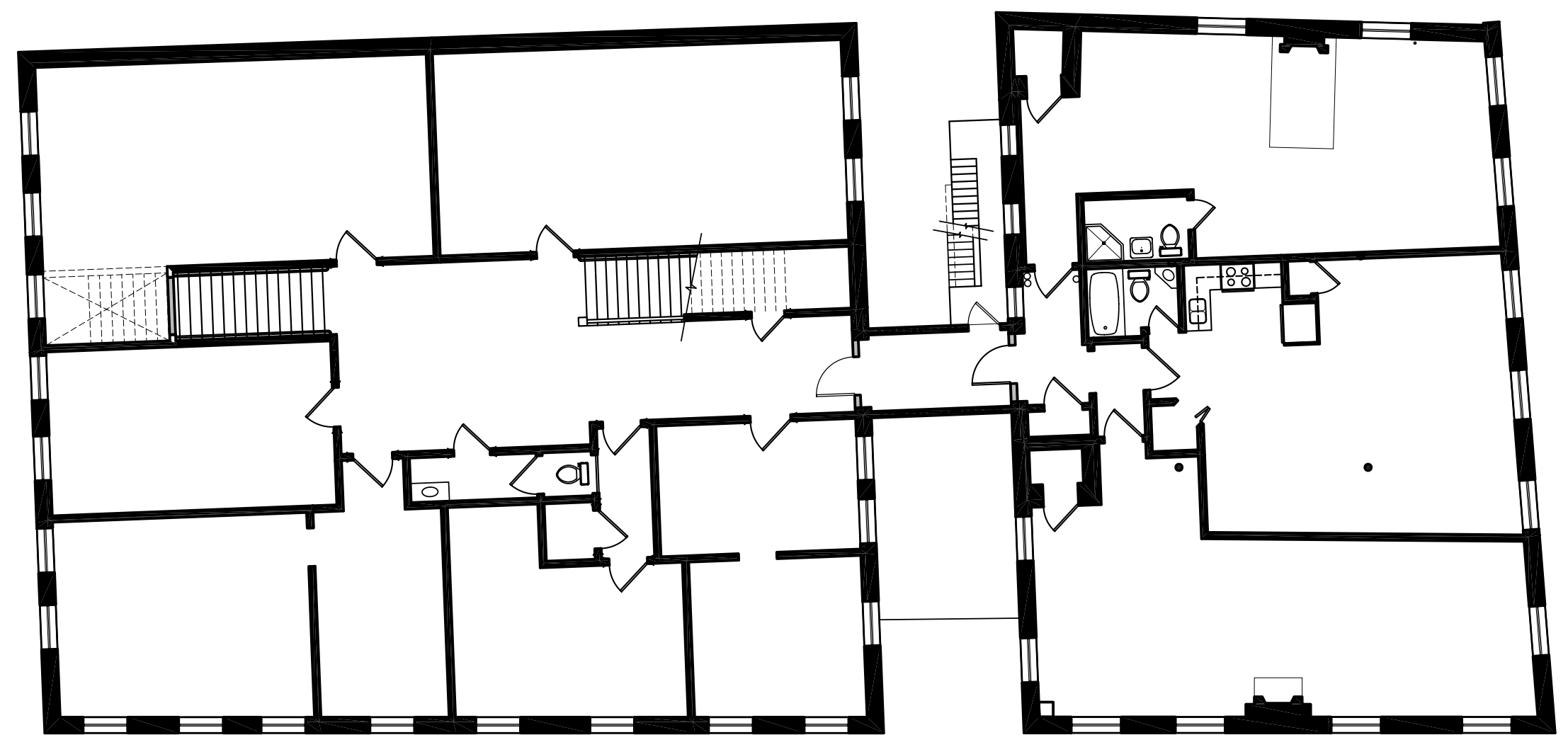
	EXIT LIGHT
	EMERGENCY BACKUP LIGHT
	SMOKE DETECTOR
	HEAT DETECTOR
	HORN/STROBE
	STROBE
	FIRE EXTINGUISHER IN RECESSED CABINET
	ELEC. RECEPTACLE (INSTALL PER CODE & AS SHOWN)

- LIFE SAFETY AND FIRE ALARM SYSTEMS SHALL BE DESIGNED AND INSTALLED PER NFPA 72 AND PER CITY OF PORTLAND CODE.
 - A SEPARATE PERMIT AND CITY APPROVED CONTRACTOR IS REQUIRED.
 - ALL STROBES TO BE 30 CANDELA UNLESS OTHERWISE NOTED.
 - SYSTEM SHALL BE SUPERVISED BY AN OFF-SITE CERTIFIED BY THE CITY OF PORTLAND THIRD PARTY.



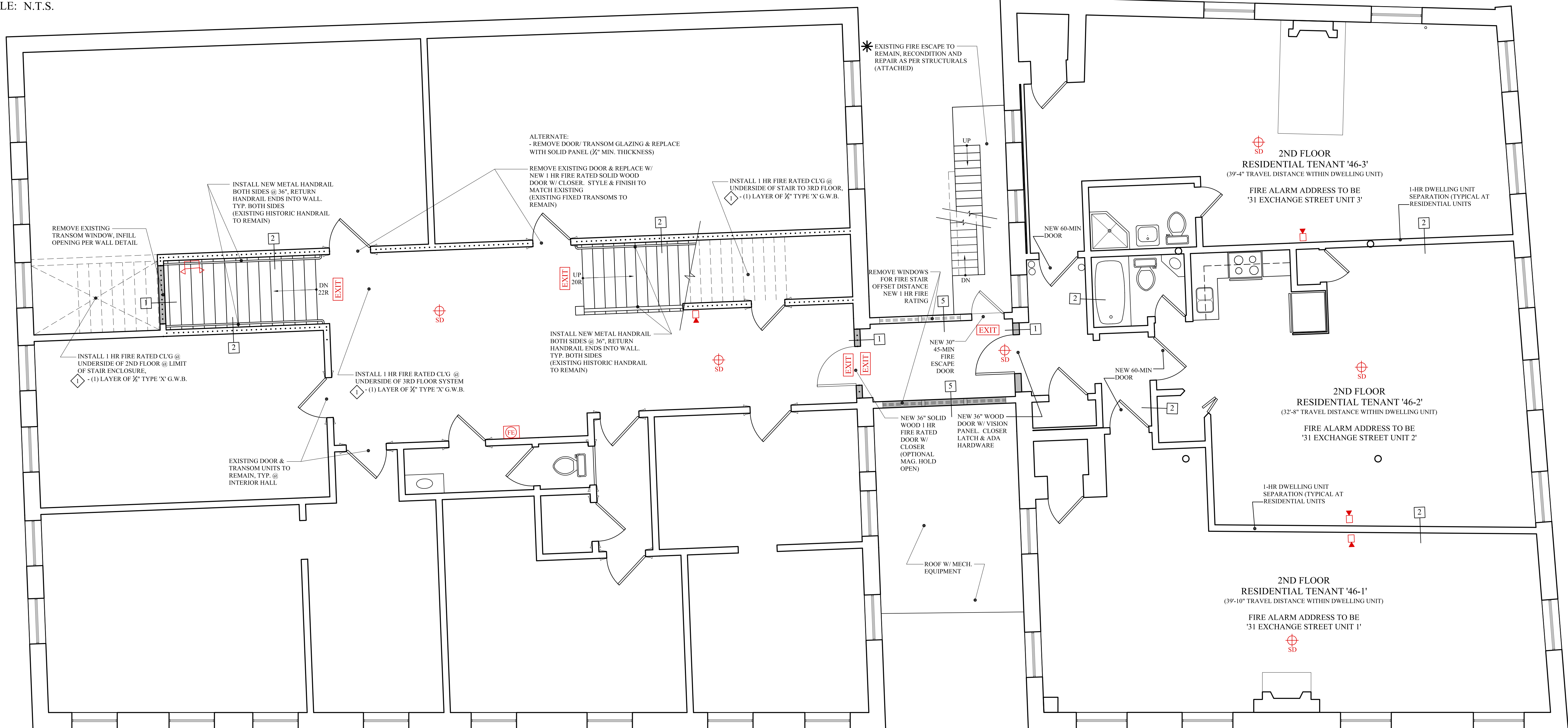
MARK MUELLER ARCHITECTS
 A.I.A.
 100 Commercial Street
 Suite 205
 Portland, Maine 04101
 Phone/Fax 207.774.9057
 Email: rfm@muellerarchitects.com

© COPYRIGHT 2014
 MARK MUELLER ARCHITECTS



KEY PLAN
 SCALE: N.T.S.

SCHEMATIC SECTION
 SCALE: 1/8" = 1'-0"



SECOND FLOOR PLAN
 SCALE: 1/4" = 1'-0"

BUILDING PERMIT SET: JANUARY 15, 2014

RENOVATIONS AT:
46 MARKET STREET
 PORTLAND, MAINE

PROPOSED 2ND FLOOR PLAN

DATE	MAY 2013
PROJECT	46 MARKET
DRAWN BY	MFP
CHECK BY	MLM

A-1.2