

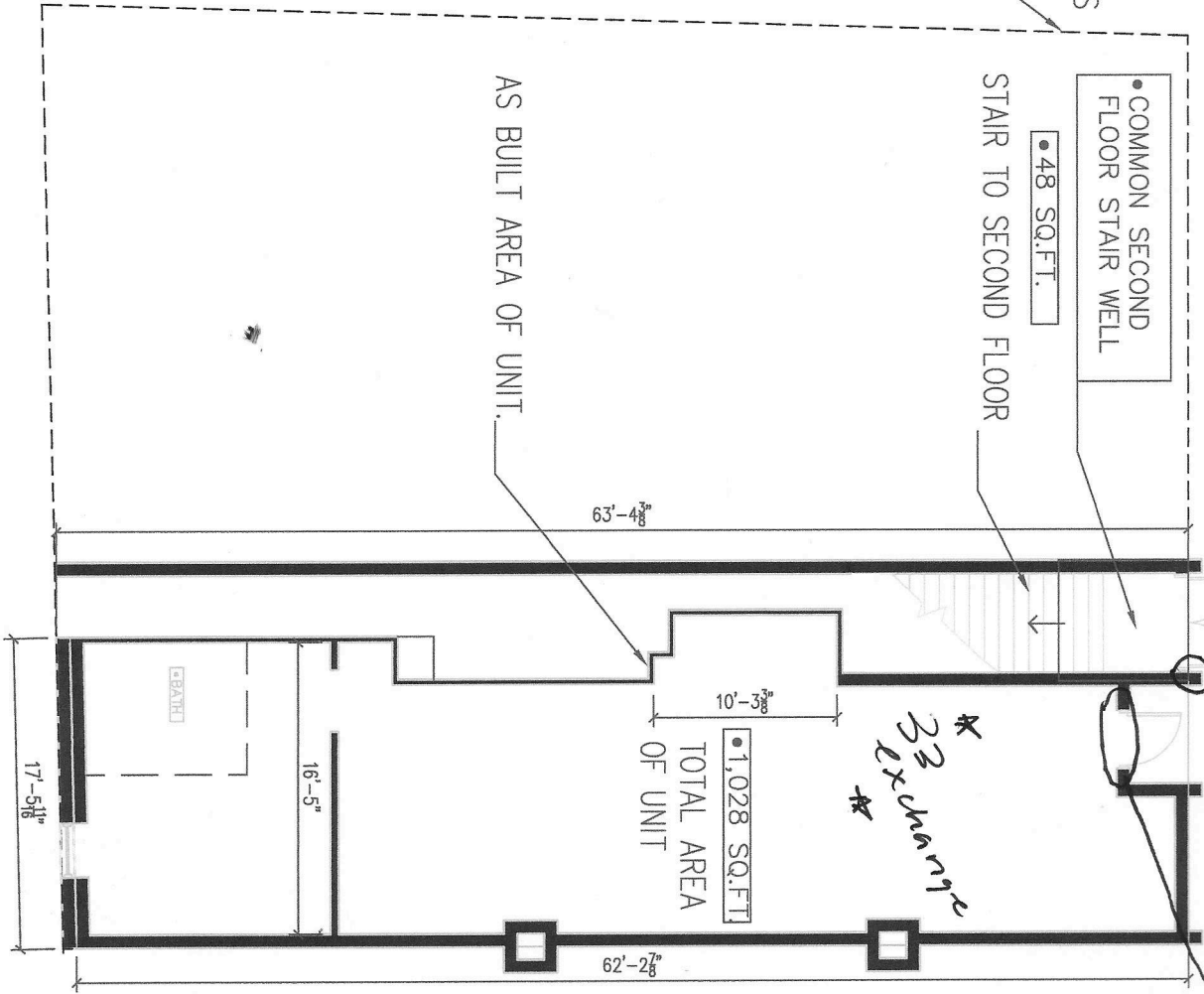
Milk street

INT OF BUILDING AS  
ON PORTLAND  
CRS DRAWINGS

size 11.5' x 3'

EXCHANGE ST

LOCATION OF PROJECTING SIGN. 11' OFF GROUND.



LOCATION OF 2ND FLOOR SIGN, DIRECTLY ABOVE DOORWAY. 1' x 4' size. FROM WALL

33 Exchange St

151 building Renfuge @ 33 Exchange St.

• COMMON SECOND FLOOR STAIR WELL

• 48 SQ.FT.

STAIR TO SECOND FLOOR

• 1,028 SQ.FT. TOTAL AREA OF UNIT

• COMMON ELECTRIC/SPRINKLER UTILITY ROOM

• 240 SQ.FT.

• COMMON GAS METER AND SUPPLY

• 16 SQ.FT.

• COMMON SPACE FIRST FLOOR UNIT SHARE 7.8%

• 24 SQ.FT.

1 FIRST FLOOR UNIT PLAN  
A1.0