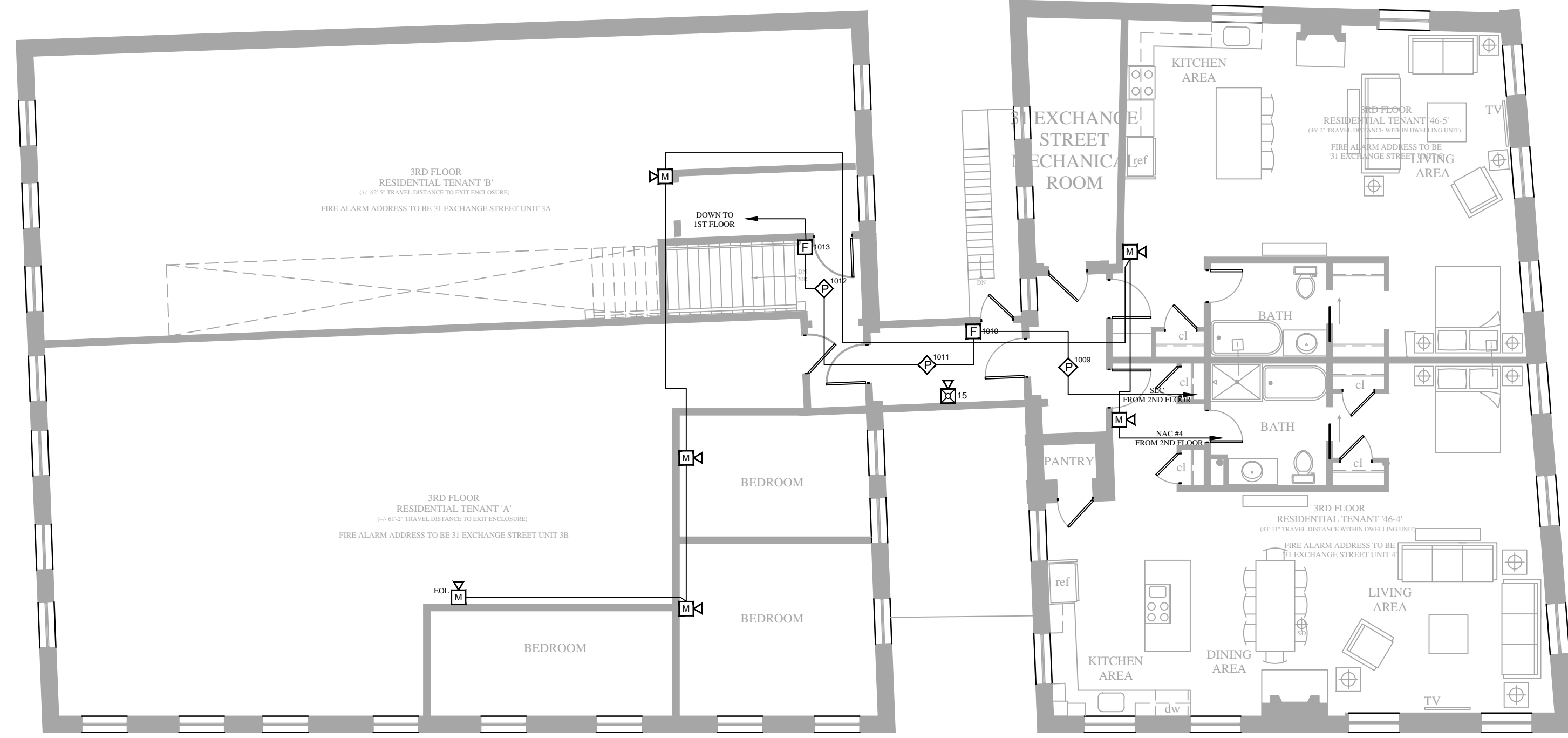


31 EXCHANGE
2ND FLOOR

4 6 MARKET
2ND FLOOR

FIRE ALARM SYSTEM LAYOUT - 2ND FLOOR
SCALE: 1/8"=1'



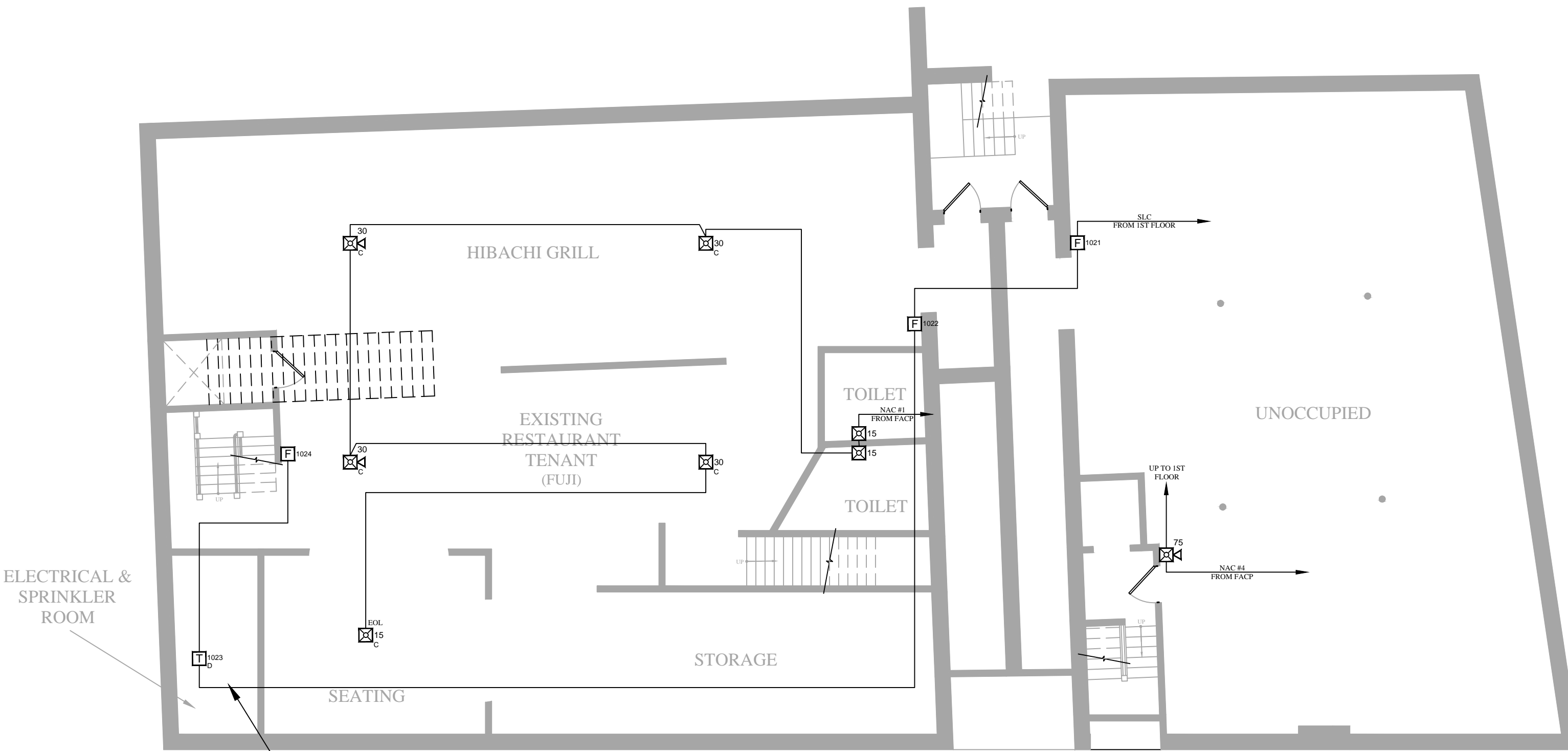
31 EXCHANGE
3RD FLOOR

4 6 MARKET
3RD FLOOR

FIRE ALARM SYSTEM LAYOUT - 3RD FLOOR
SCALE: 1/8"=1'

SYMBOL LEGEND				
QTY	SYMBOL	DESCRIPTION	MODEL	BACK BOX
1	[FACP]	FIRE ALARM CONTROL PANEL	FC-922	ENCLOSURE
1	[MST]	RADIO MASTER BOX	AES	ENCLOSURE
2	[ANN]	REMOTE ANNUNCIATOR	FT2015-R3	ENCLOSURE
9	[SD]	SMOKE DETECTOR/BASE	OH921/DB-11	SINGLE GANG OR OCTAGON BOX
13	[MP]	MANUAL PULL STATION	MSM-KD/HTRLM	3.5" DEEP SINGLE GANG
1	[T _M]	SINGLE INPUT MINI MONITOR MODULE	HTRI-M	-
1	[T _D]	DUAL INPUT MONITOR MODULE	HTRI-D	4" SQUARE
2	[T _I]	4 INPUT/OUTPUT MODULE	FDCIO422	4 11/16" SQUARE
7	[MCS]	MULTI-CANDELA STROBE	ZR-MC-R	4" SQUARE
3	[MCS _C]	MULTI-CANDELA STROBE (CEILING)	MODEL	4" SQUARE
12	[MCHS]	MULTI-CANDELA HORN/STROBE	ZH-MC-R	4" SQUARE
7	[MCHS _C]	MULTI-CANDELA HORN/STROBE (CEILING)	ZH-MC-CR	4" SQUARE
9	[MH]	MINI HORN	MH-R	4" SQUARE
1	[KB]	KNOX BOX	MODEL	3.5" DEEP SINGLE GANG

NOTE: 1ST FLOOR & BASEMENT OF 46 MARKET ST. IS NOT BEING RENOVATED AT THIS TIME. FIRE ALARM SYSTEM IS PROVIDED FOR GENERAL EVACUATION IN OPEN CONCEPT SPACE AS SHOWN. FIRE ALARM SYSTEM SHALL BE MODIFIED TO ACCOMMODATE FUTURE RENOVATIONS. SYSTEM IS DESIGNED WITH ROOM FOR EXPANSION IN THESE SPACES.

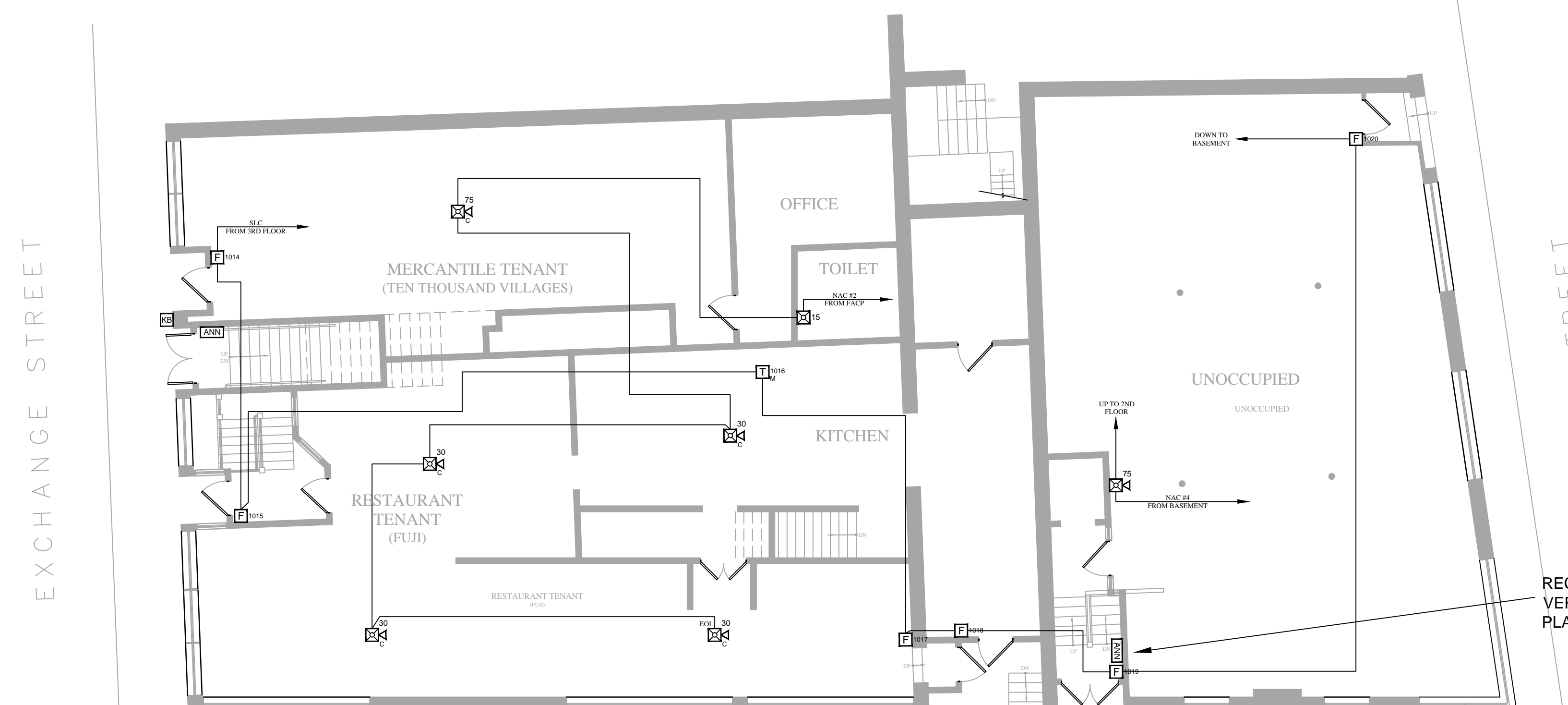


31 EXCHANGE
BASEMENT

4 6 MARKET
BASEMENT

FIRE ALARM SYSTEM LAYOUT - BASEMENT
SCALE: 1/8"=1'

EXISTING SPRINKLER RISER TO BE MODIFIED TO ACCOMMODATE PADDLE TYPE FLOW SWITCH & TAMPER SWITCH FOR INTERFACE WITH FIRE ALARM SYSTEM

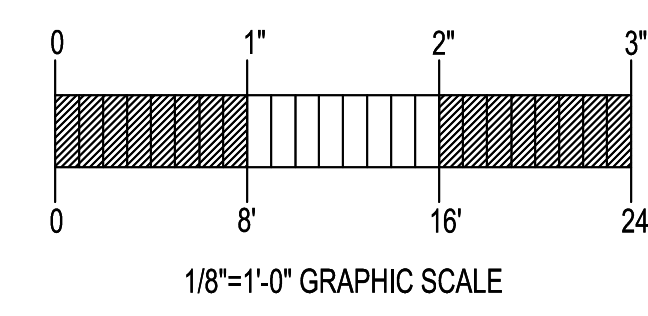


31 EXCHANGE
1ST FLOOR

4 6 MARKET
1ST FLOOR

FIRE ALARM SYSTEM LAYOUT - 1ST FLOOR
SCALE: 1/8"=1'

RECOGNIZED AS PRIMARY ENTRY TO COMMERCIAL SPACE. VERIFY WITH PORTLAND FIRE DEPARTMENT FOR ANNUNCIATOR PLACEMENT



GENERAL NOTES	DATE	REVISIONS	REQUIRED APPROVALS	FIRE ALARM SYSTEM
			OWNER STATE FIRE MARSHAL LOCAL FIRE DEPARTMENT	31 Exchange/46 Market PORTLAND, ME
			DRAWN BY: CRM	PLANS & DETAILS
			CHECKED BY: BWB	DWG. NO. 1 OF 2
			CONTRACTOR LICENSE #	JOB NUMBER
			EASTERN FIRE SERVICES, INC. AUBURN/LEWISTON INDUSTRIAL AIRPARK, AUBURN, MAINE 04210	SCALE AS SHOWN
				DATE 5-8-14