

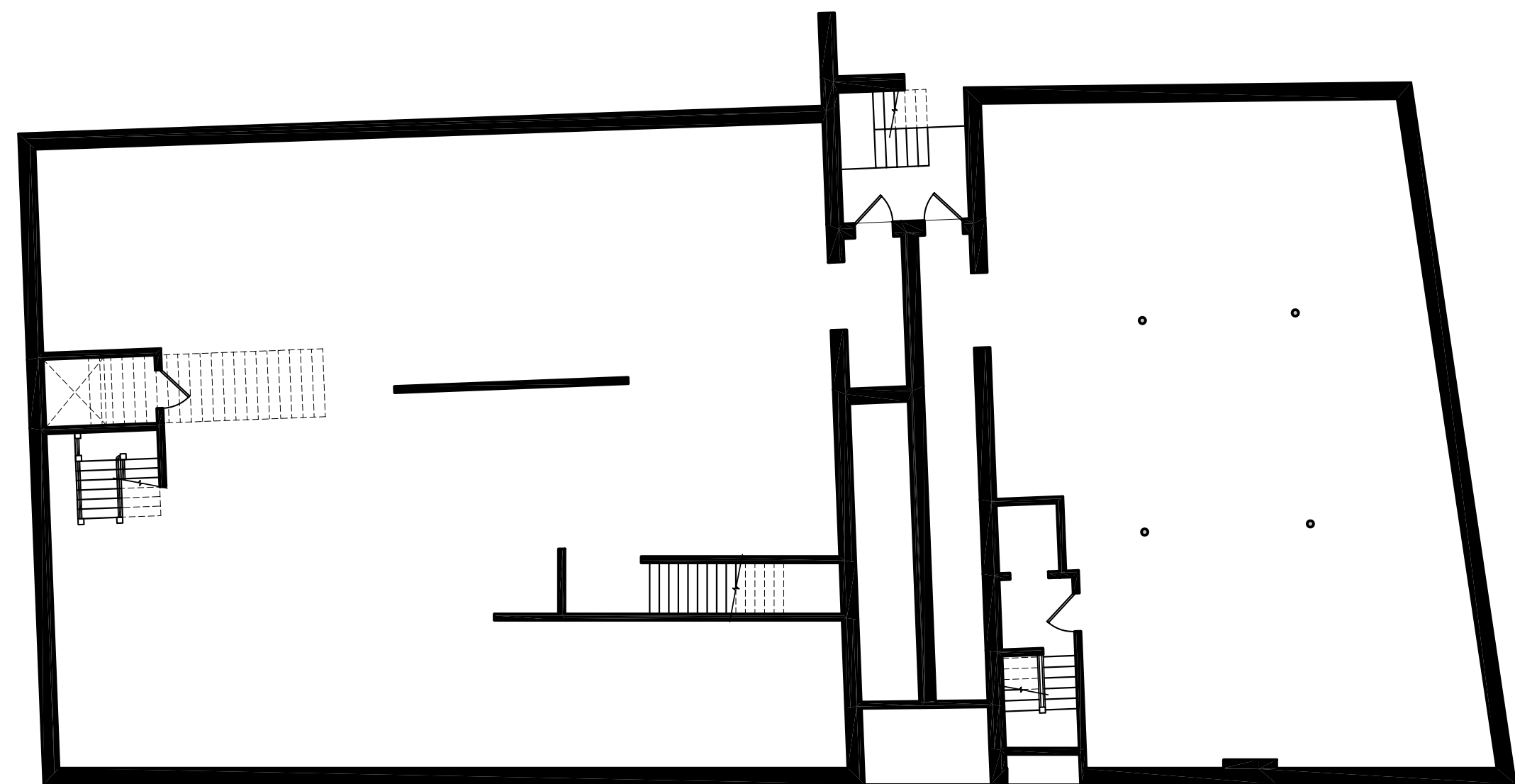
WALL LEGEND

EXISTING WALL	
PROPOSED WALL	
DEMOLISHED WALL	
FIRE RATED WALL	

LIFE SAFETY LEGEND:

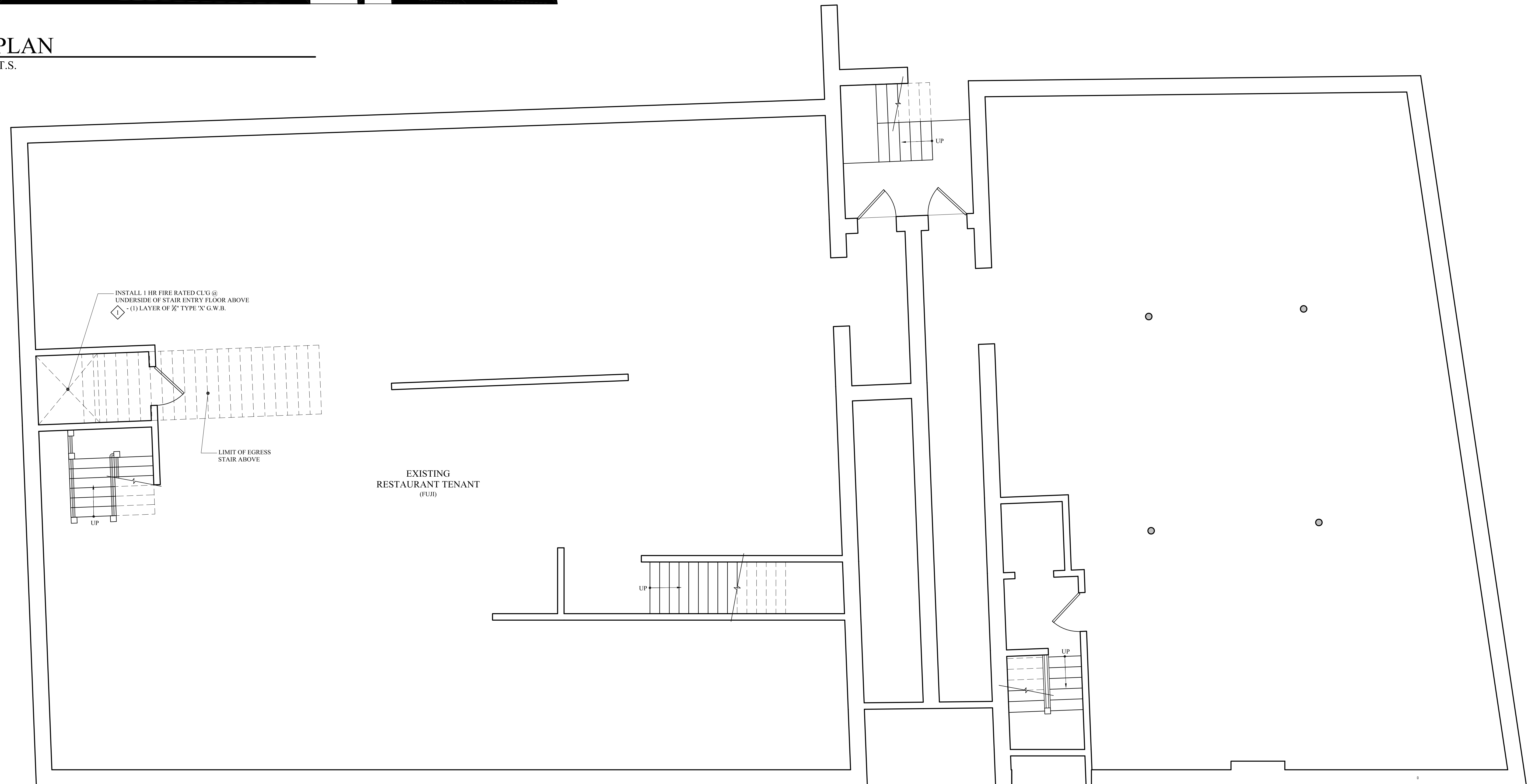
	EXIT LIGHT
	EMERGENCY BACKUP LIGHT
	SMOKE DETECTOR
	HEAT DETECTOR
	HORN STROBE
	STROBE
	FIRE EXTINGUISHER IN RECESSED CABINET
	ELEC. RECEPTACLE (INSTALL PER CODE & AS SHOWN)

- LIFE SAFETY AND FIRE ALARM SYSTEMS SHALL BE DESIGNED AND INSTALLED PER NFPA 72, AND PER CITY OF PORTLAND CODE.  
 - A SEPERATE PERMIT AND CITY APPROVED CONTRACTOR IS REQUIRED.  
 - ALL STROBES TO BE 30 CANDELA UNLESS OTHERWISE NOTED.  
 - SYSTEM SHALL BE SUPERVISED BY AN OFF-SITE CERTIFIED BY THE CITY OF PORTLAND THIRD PARTY.



KEY PLAN

SCALE: N.T.S.

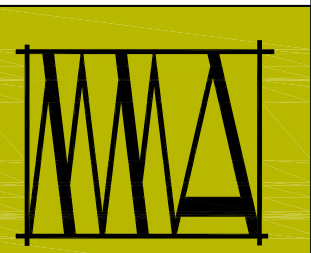


EXISTING RESTAURANT TENANT (FUI)

BASEMENT FLOOR PLAN

SCALE: 1/4" = 1'-0"

BUILDING PERMIT SET: JANUARY 15, 2015



**M A R K  
M U E L L E R  
A R C H I T E C T S**  
A.I.A.

100 Commercial Street  
Suite 205  
Portland, Maine 04101  
Phone/Fax 207.774.9057  
Email:  
rf@muellerarchitects.com

© COPYRIGHT 2013  
MARK MUELLER ARCHITECTS

LIFE SAFETY REMEDIATION AT:  
**31 EXCHANGE STREET**  
31 EXCHANGE STREET  
PORTLAND, MAINE

PROPOSED  
BASEMENT PLAN

DATE	MAY 2013
PROJECT	31 EXCHANGE
DRAWN BY	MFP
CHECK BY	MLM

A-1.4