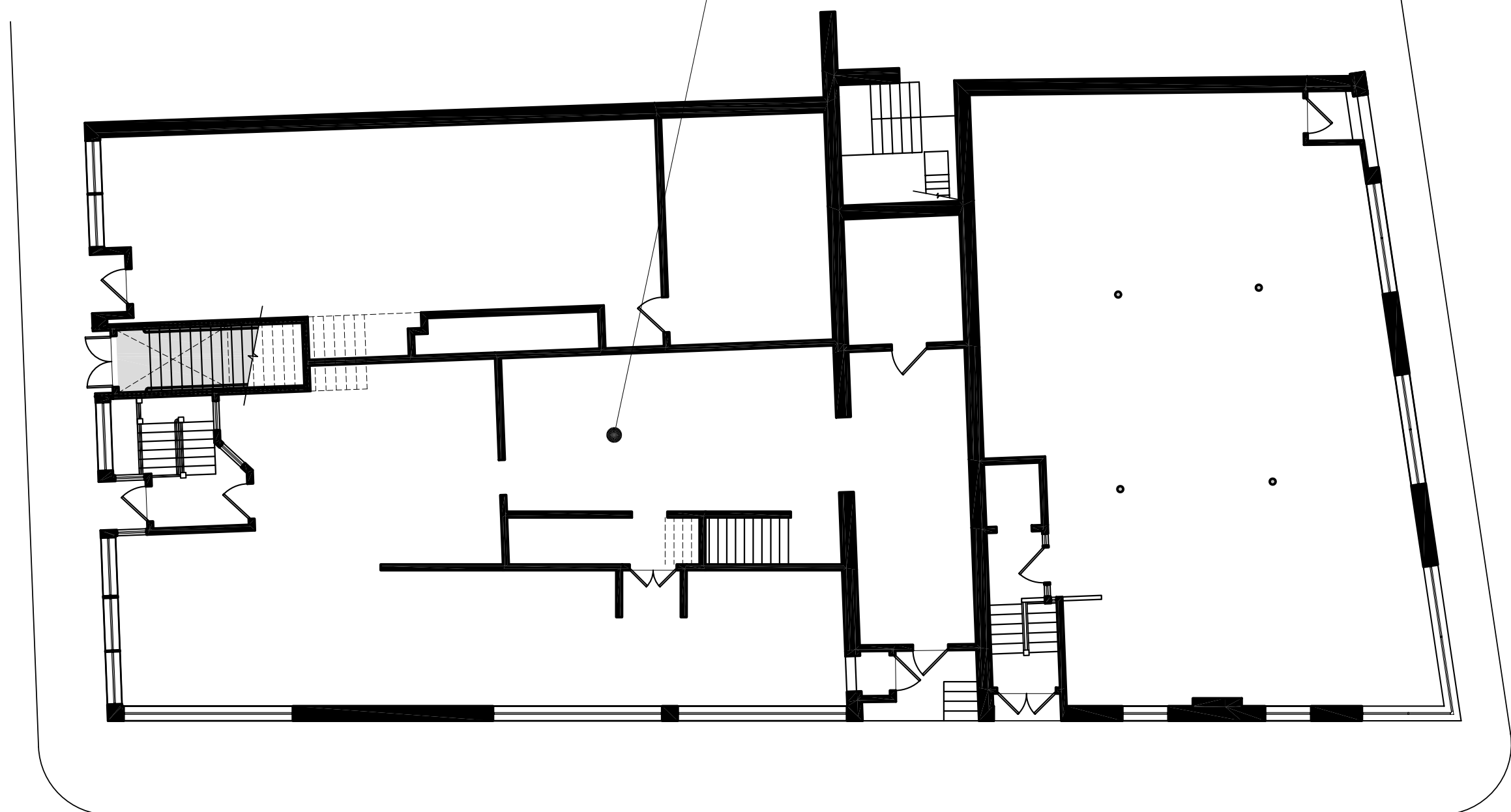
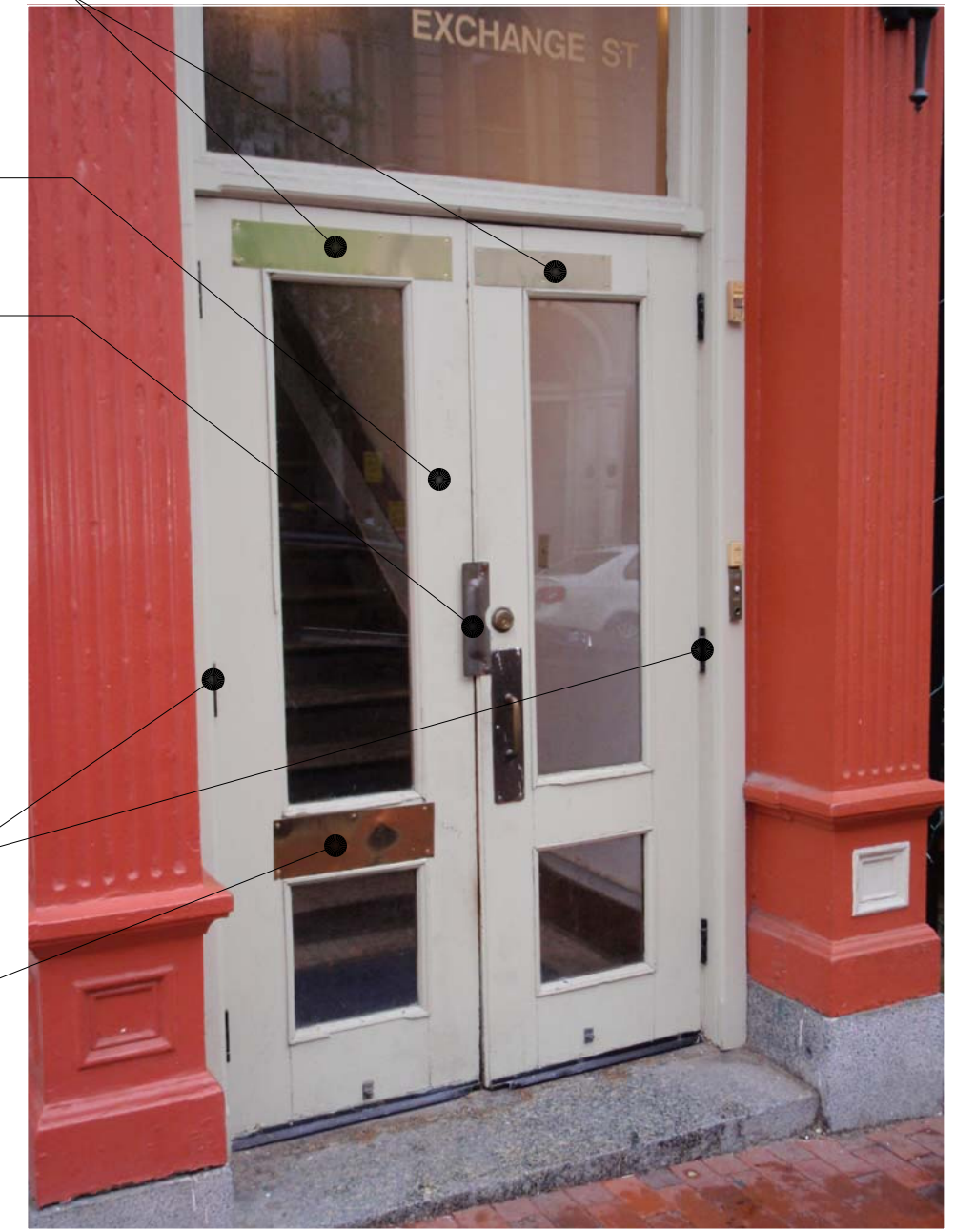
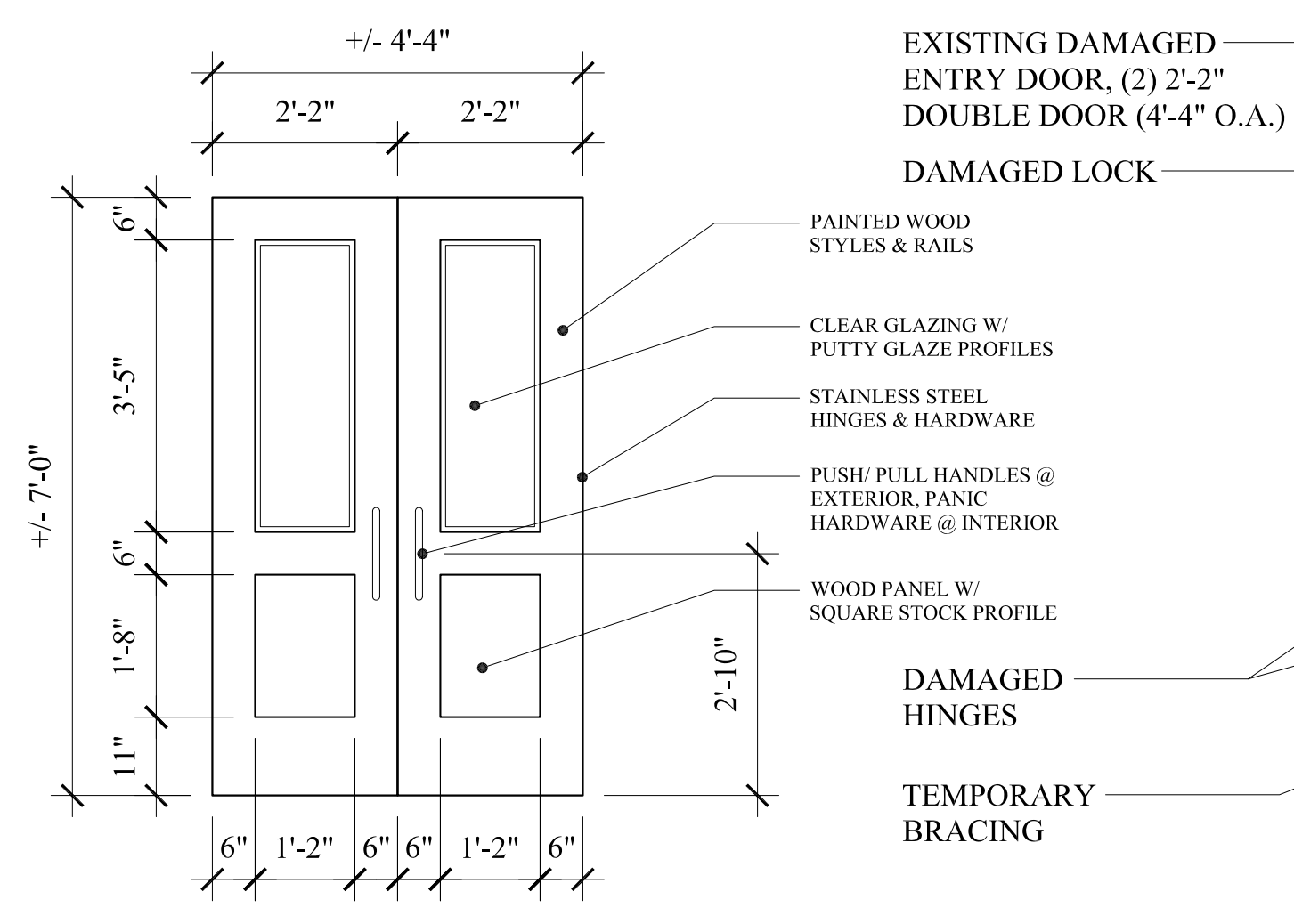


PROPOSED PLANS FOR LIFE SAFETY REMEDIATION WITHIN 31 EXCHANGE STREET ONLY



PROPOSED ENTRY DOOR
SCALE: 1/2" = 1'-0"



WALL LEGEND

- EXISTING WALL
- PROPOSED WALL
- DEMOLISHED WALL
- FIRE RATED WALL

LIFE SAFETY LEGEND:

- EXIT LIGHT
- EMERGENCY BACKUP LIGHT
- SMOKE DETECTOR
- HEAT DETECTOR
- HORN/STROBE
- STROBE
- FIRE EXTINGUISHER IN RECESSED CABINET
- ELEC. RECEPTACLE (INSTALL PER CODE & AS SHOWN)

- LIFE SAFETY AND FIRE ALARM SYSTEMS SHALL BE DESIGNED AND INSTALLED PER NFPA 72 AND PER CITY OF PORTLAND CODE.

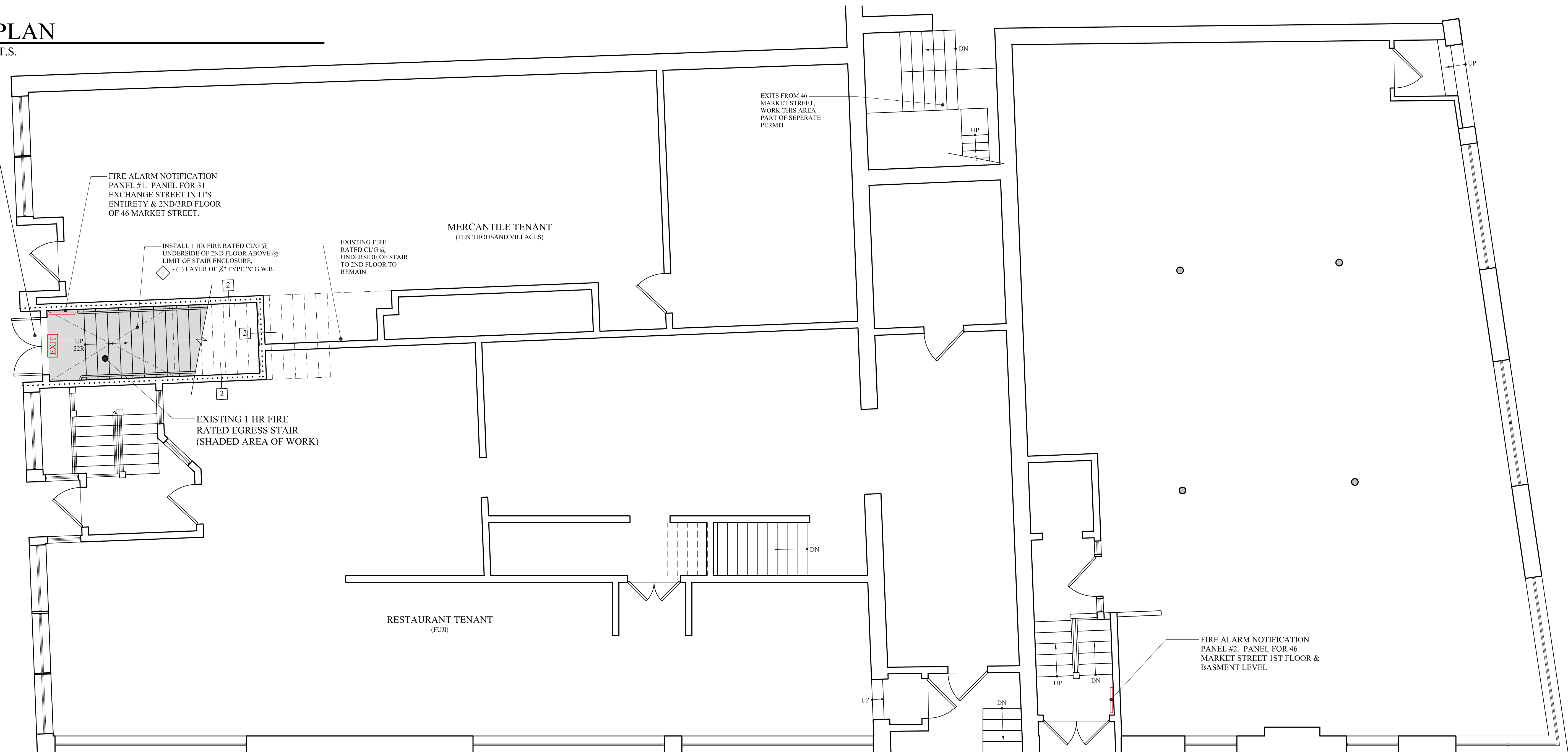
- A SEPARATE PERMIT AND CITY APPROVED CONTRACTOR IS REQUIRED.

- ALL STROBES TO BE 30 CANDELA UNLESS OTHERWISE NOTED.

- SYSTEM SHALL BE SUPERVISED BY AN OFF-SITE CERTIFIED BY THE CITY OF PORTLAND THIRD PARTY.

KEY PLAN
SCALE: N.T.S.

MAIN ENTRY DOOR DEMOLISHED DURING RECENT UNAUTHORIZED BUILDING ACCESS. NEW ENTRY DOOR PROPOSED. SEE DOOR ELEVATION & MANUF. DETAIL SHEET



FIRST FLOOR PLAN
SCALE: 1/4" = 1'-0"

BUILDING PERMIT SET: JANUARY 15, 2015

MARK MUELLER ARCHITECTS A.I.A.
100 Commercial Street, Suite 205
Portland, Maine 04101
Phone/Fax 207.774.9057
Email: rfm@muellerarchitects.com

LIFE SAFETY REMEDIATION AT:
31 EXCHANGE STREET
31 EXCHANGE STREET
PORTLAND, MAINE

PROPOSED 1ST FLOOR PLAN

DATE	MAY 2013
PROJECT	31 EXCHANGE
DRAWN BY	MFP
CHECK BY	MLM