

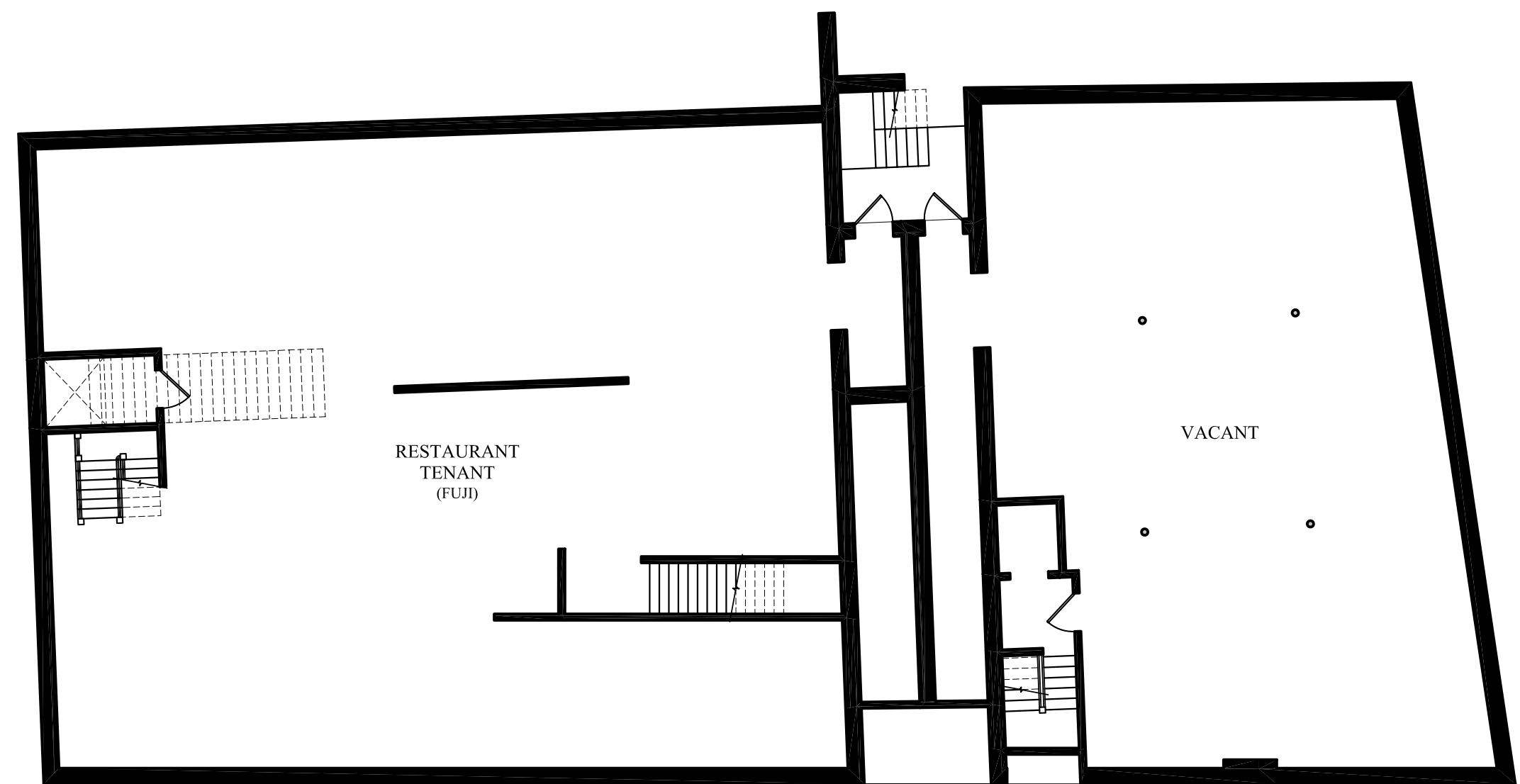
WALL LEGEND

EXISTING WALL	
PROPOSED WALL	
DEMOLISHED WALL	
FIRE RATED WALL	

LIFE SAFETY LEGEND:

	EXIT LIGHT
	EMERGENCY BACKUP LIGHT
	SMOKE DETECTOR
	HEAT DETECTOR
	HORN/STROBE
	STROBE
	FIRE EXTINGUISHER IN RECESSED CABINET
	ELEC. RECEPTACLE (INSTALL PER CODE & AS SHOWN)

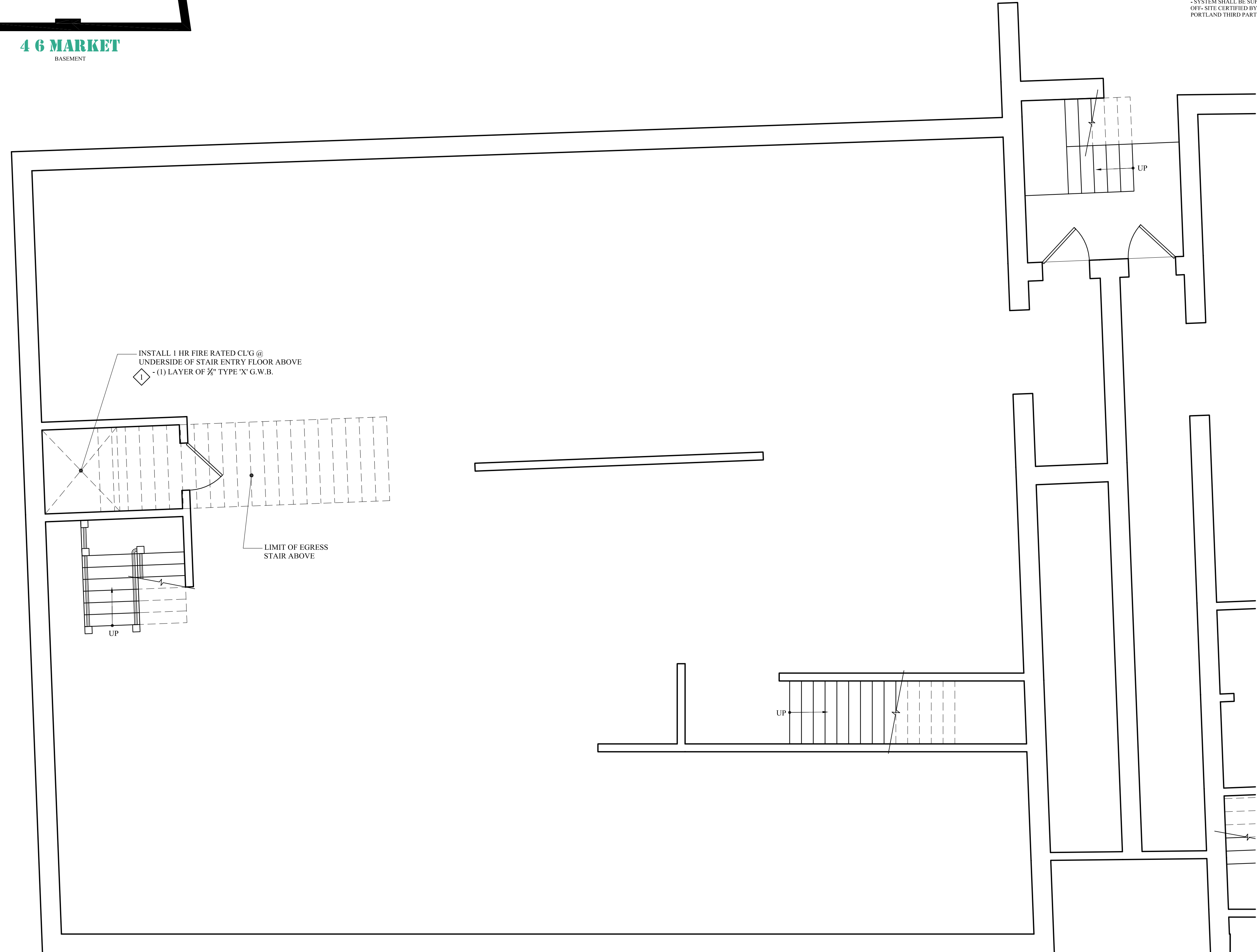
- LIFE SAFETY AND FIRE ALARM SYSTEMS SHALL BE DESIGNED AND INSTALLED PER NFPA 72 AND PER CITY OF PORTLAND CODE.
- A SEPERATE PERMIT AND CITY APPROVED CONTRACTOR IS REQUIRED.
- ALL STROBES TO BE 30 CANDELA UNLESS OTHERWISE NOTED.
- SYSTEM SHALL BE SUPERVISED BY AN OFF-SITE CERTIFIED BY THE CITY OF PORTLAND THIRD PARTY.



31 EXCHANGE
BASEMENT

46 MARKET
BASEMENT

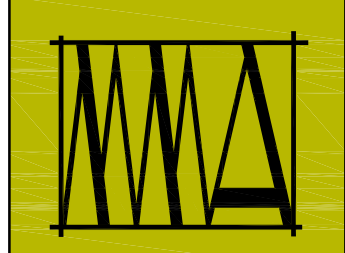
KEY PLAN
SCALE: N.T.S.



INSTALL 1 HR FIRE RATED CLG @
UNDERSIDE OF STAIR ENTRY FLOOR ABOVE
- (1) LAYER OF 5/8" TYPE 'X' G.W.B.

LIMIT OF EGRESS
STAIR ABOVE

BASEMENT FLOOR PLAN
SCALE: 1/4" = 1'-0"



MARK
MUELLER
ARCHITECTS
A.I.A.
100 Commercial Street
Suite 205
Portland, Maine 04101
Phone/Fax 207.774.9057
Email:
rf@muellerarchitects.com

© COPYRIGHT 2013
MARK MUELLER ARCHITECTS

31 EXCHANGE
31 EXCHANGE STREET
PORTLAND, MAINE

PROPOSED
BASEMENT PLAN

DATE	MAY 2013
PROJECT	31 EXCHANGE
DRAWN BY	MRP
CHECK BY	MLM

A-1.4

LIFE SAFETY REMEDIATION SET: JUNE 14, 2013