

WALL LEGEND

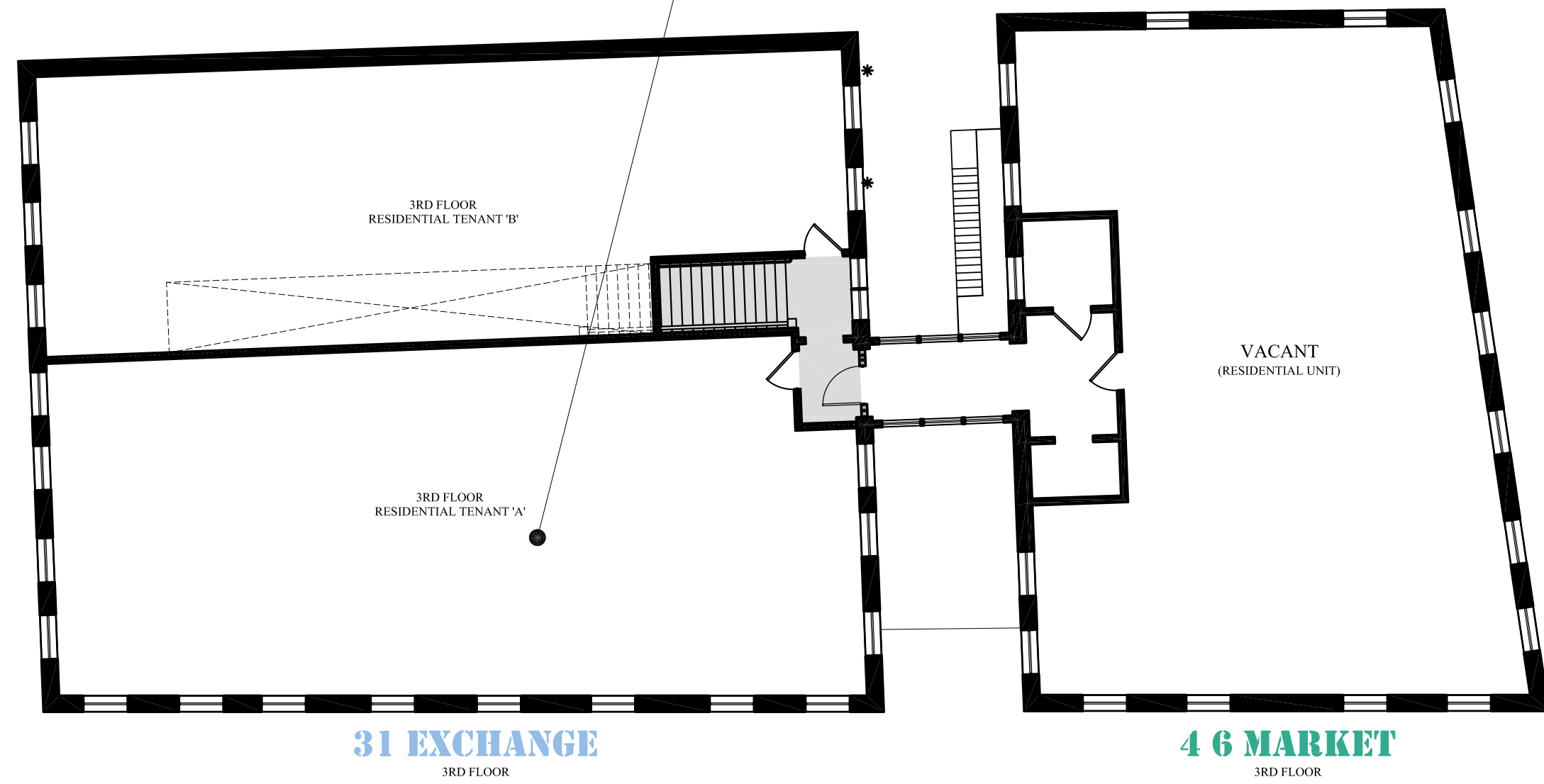
EXISTING WALL	
PROPOSED WALL	
DEMOLISHED WALL	
FIRE RATED WALL	

LIFE SAFETY LEGEND:

	EXIT LIGHT
	EMERGENCY BACKUP LIGHT
	SMOKE DETECTOR
	HEAT DETECTOR
	HORN/STROBE
	STROBE
	FIRE EXTINGUISHER IN RECESSED CABINET
	ELEC. RECEPTACLE (INSTALL PER CODE & AS SHOWN)

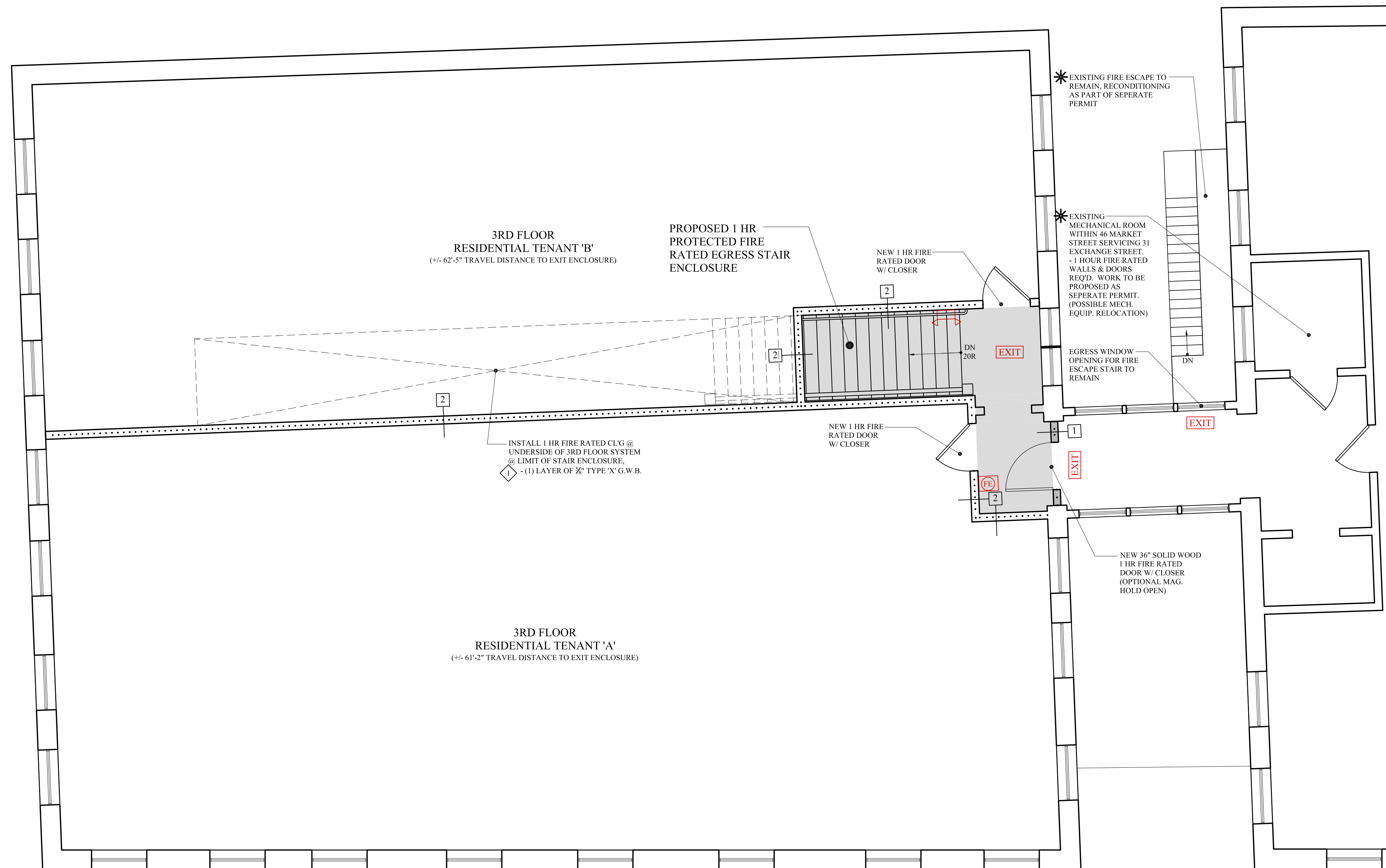
- LIFE SAFETY AND FIRE ALARM SYSTEMS SHALL BE DESIGNED AND INSTALLED PER NFPA 72, AND PER CITY OF PORTLAND CODE.  
 - A SEPERATE PERMIT AND CITY APPROVED CONTRACTOR IS REQUIRED.  
 - ALL STROBES TO BE 30 CANDELA UNLESS OTHERWISE NOTED.  
 - SYSTEM SHALL BE SUPERVISED BY AN OFF-SITE CERTIFIED BY THE CITY OF PORTLAND THIRD PARTY.

PROPOSED PLANS FOR LIFE SAFETY REMEDIATION WITHIN 31 EXCHANGE STREET ONLY



KEY PLAN

SCALE: N.T.S.



THIRD FLOOR PLAN

SCALE: 1/4" = 1'-0"

LIFE SAFETY REMEDIATION SET: JUNE 14, 2013



MARK MUELLER ARCHITECTS A.I.A.  
 100 Commercial Street  
 Suite 205  
 Portland, Maine 04101  
 Phone/Fax 207.774.9057  
 Email: rfm@muellerarchitects.com

© COPYRIGHT 2013  
 MARK MUELLER ARCHITECTS

31 EXCHANGE  
 31 EXCHANGE STREET  
 PORTLAND, MAINE

PROPOSED  
 3RD FLOOR PLAN

DATE	MAY 2013
PROJECT	31 EXCHANGE
DRAWN BY	MRP
CHECK BY	MLM

A-1.3