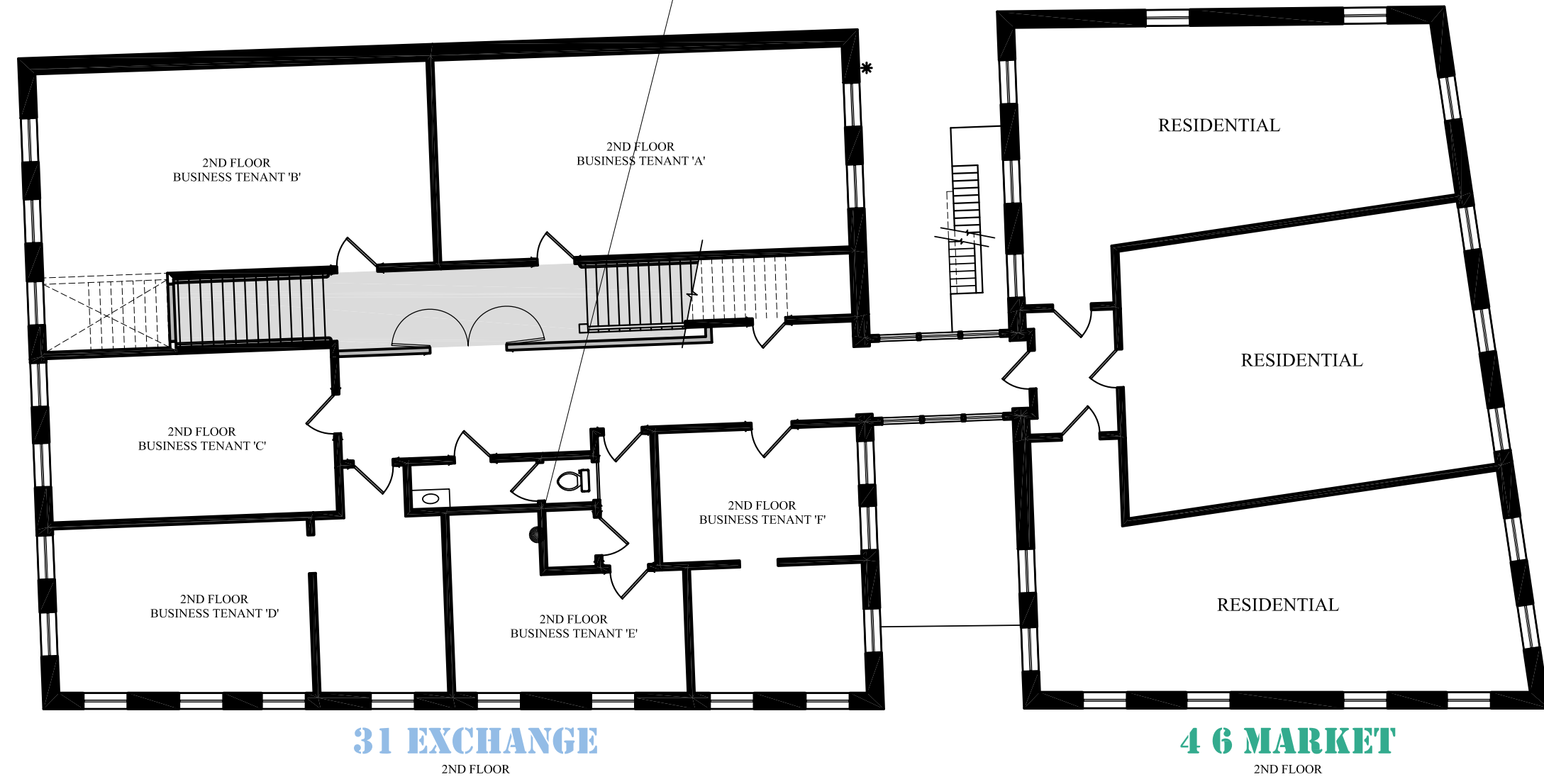
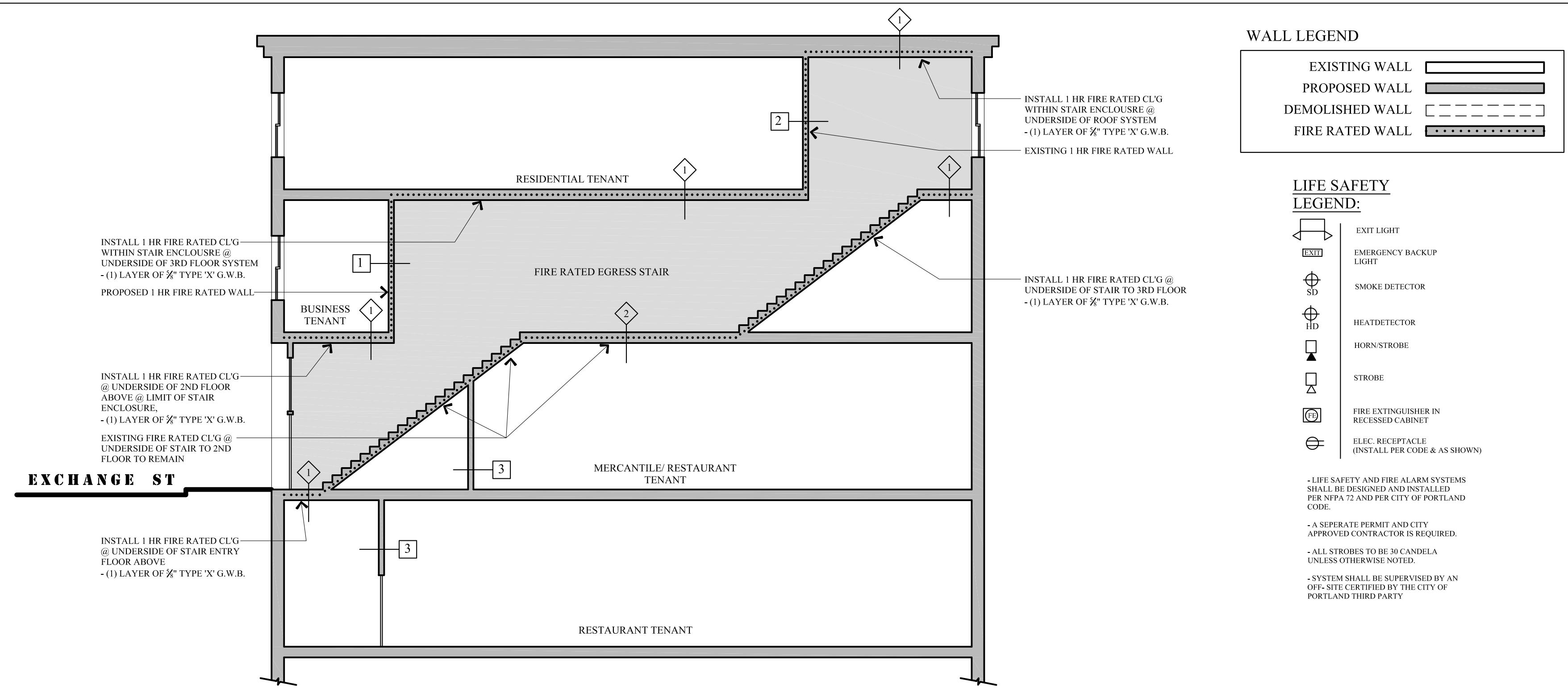


PROPOSED PLANS FOR LIFE SAFETY REMEDIATION WITHIN 31 EXCHANGE STREET ONLY

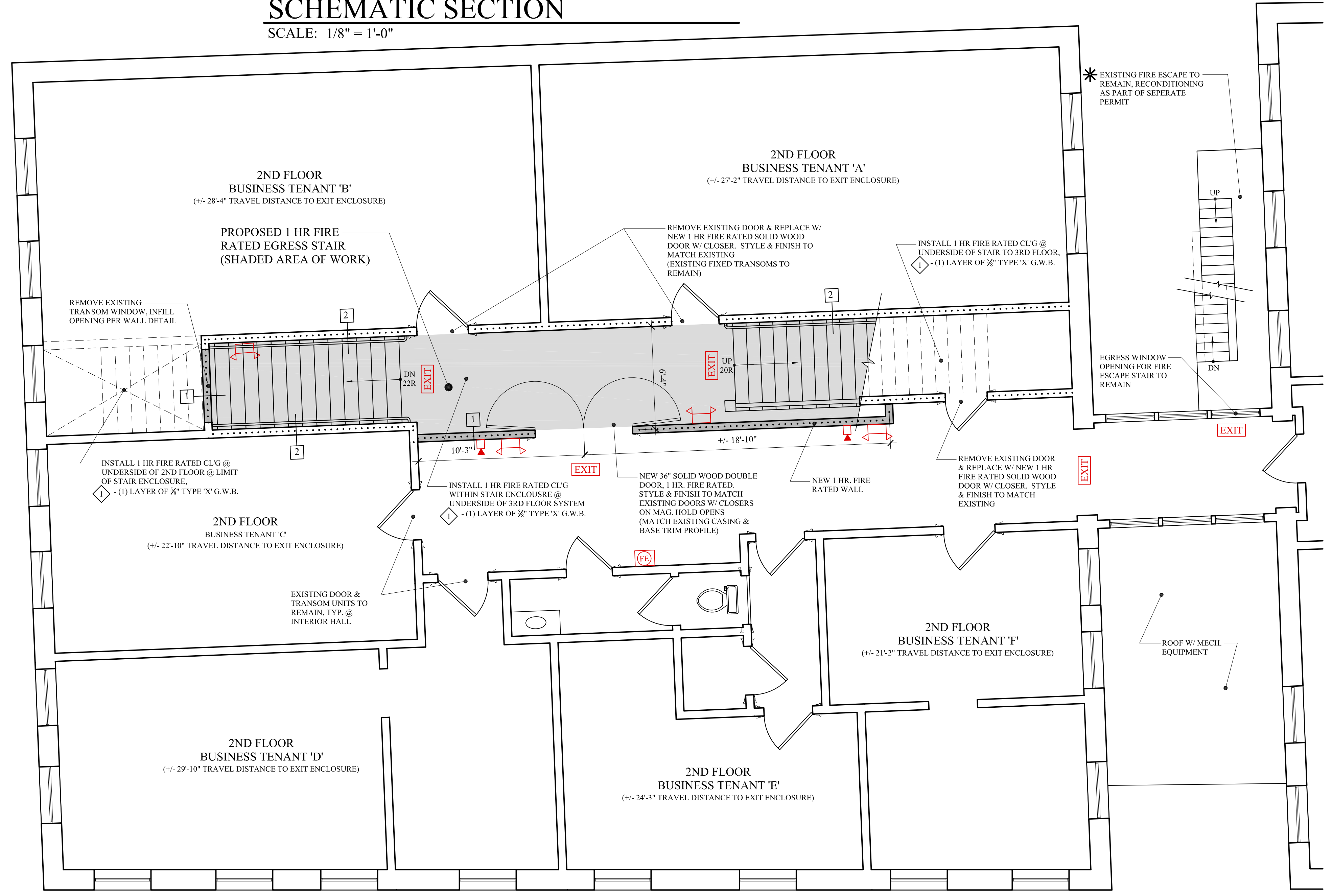
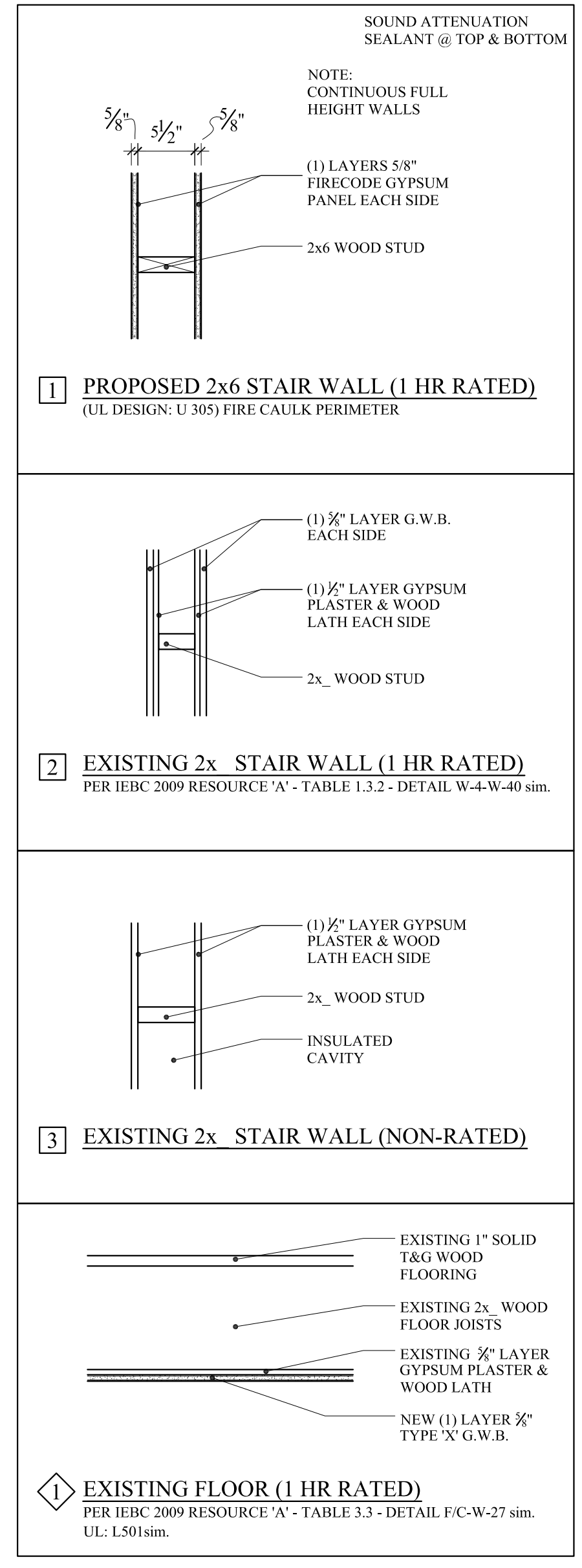


KEY PLAN
SCALE: N.T.S.



SCHEMATIC SECTION
SCALE: 1/8" = 1'-0"

- WALL LEGEND**
- EXISTING WALL
 - PROPOSED WALL
 - DEMOLISHED WALL
 - FIRE RATED WALL
- LIFE SAFETY LEGEND:**
- EXIT LIGHT
 - EMERGENCY BACKUP LIGHT
 - SMOKE DETECTOR
 - HEAT DETECTOR
 - HORN/STROBE
 - STROBE
 - FIRE EXTINGUISHER IN RECESSED CABINET
 - ELEC. RECEPTACLE (INSTALL PER CODE & AS SHOWN)
- LIFE SAFETY AND FIRE ALARM SYSTEMS SHALL BE DESIGNED AND INSTALLED PER NFPA 72 AND PER CITY OF PORTLAND CODE.
- A SEPERATE PERMIT AND CITY APPROVED CONTRACTOR IS REQUIRED.
- ALL STROBES TO BE 30 CANDELA UNLESS OTHERWISE NOTED.
- SYSTEM SHALL BE SUPERVISED BY AN OFF-SITE CERTIFIED BY THE CITY OF PORTLAND THIRD PARTY.



SECOND FLOOR PLAN
SCALE: 1/4" = 1'-0"

MARK MUELLER ARCHITECTS
A.I.A.
100 Commercial Street
Suite 205
Portland, Maine 04101
Phone/Fax 207.774.9057
Email: rfm@muellerarchitects.com

31 EXCHANGE
31 EXCHANGE STREET
PORTLAND, MAINE

PROPOSED 2ND FLOOR PLAN

REVISIONS:

DATE	MAY 2013
PROJECT	31 EXCHANGE
DRAWN BY	MJP
CHECK BY	MLM

A-1.2