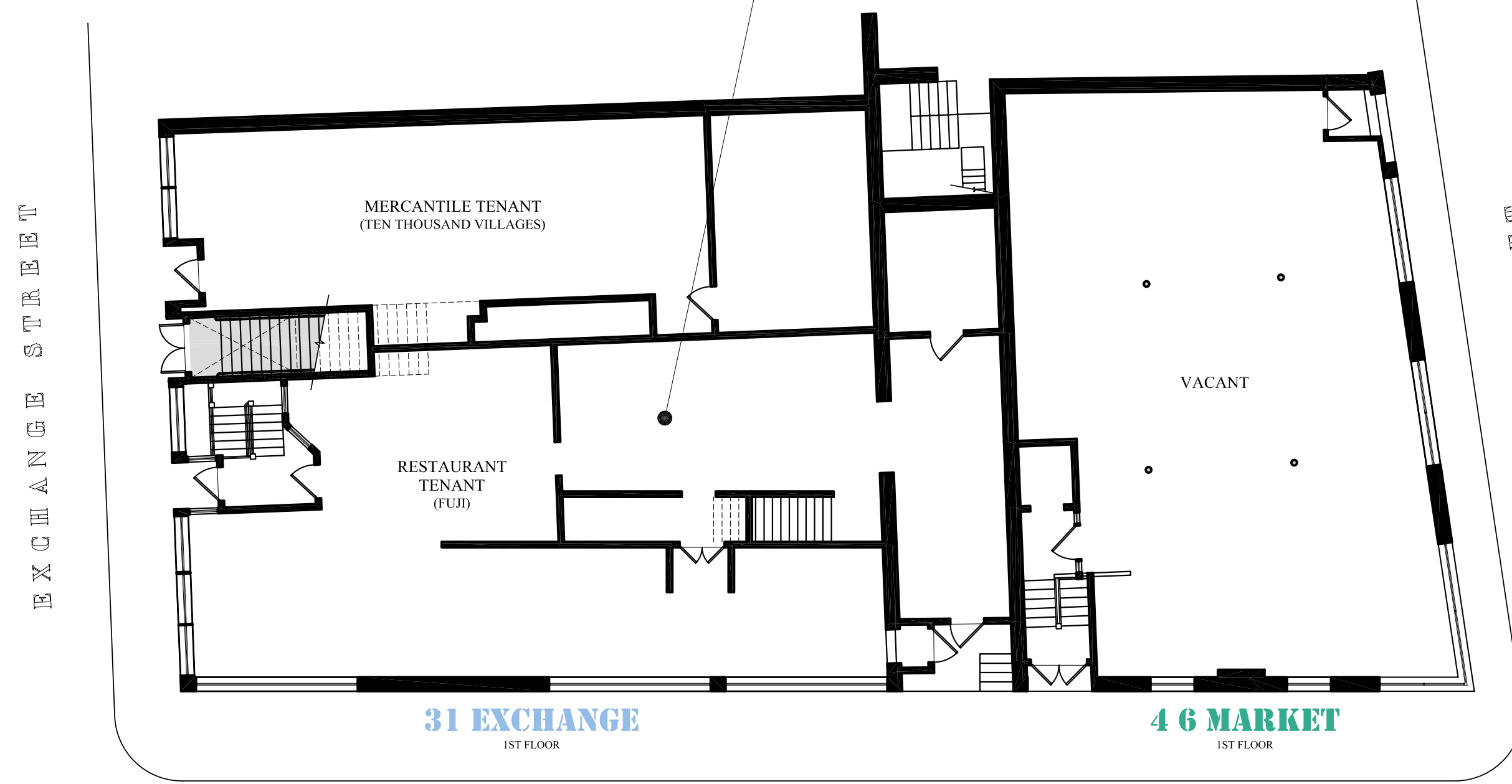
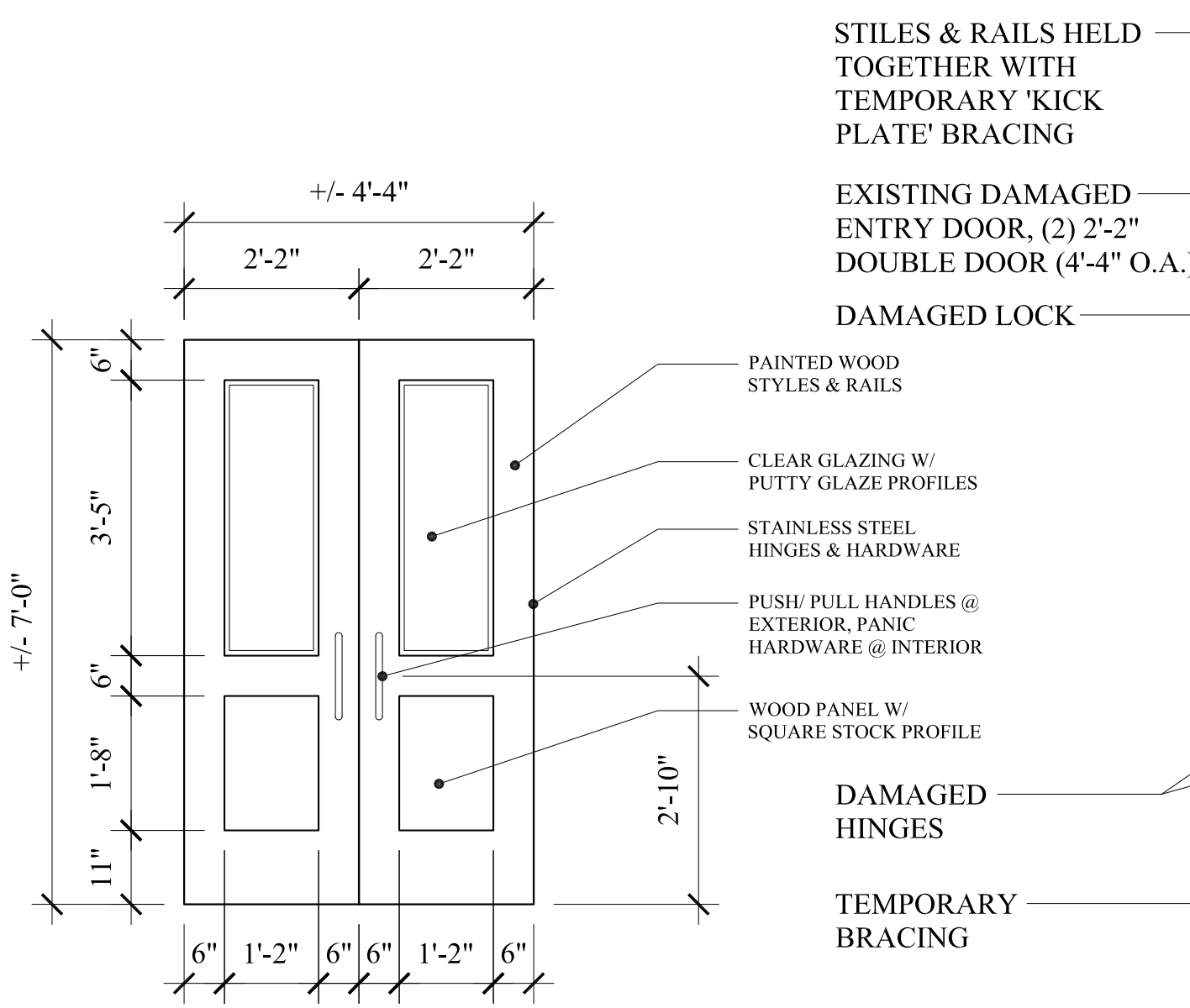


PROPOSED PLANS FOR LIFE SAFETY REMEDIATION WITHIN 31 EXCHANGE STREET ONLY



KEY PLAN

SCALE: N.T.S.

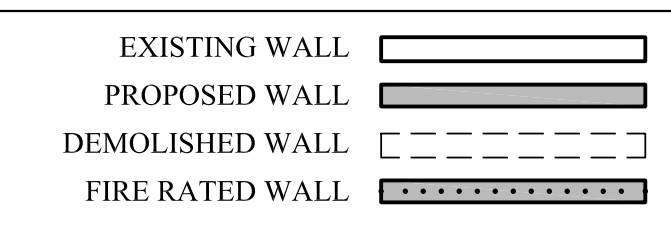


PROPOSED ENTRY DOOR

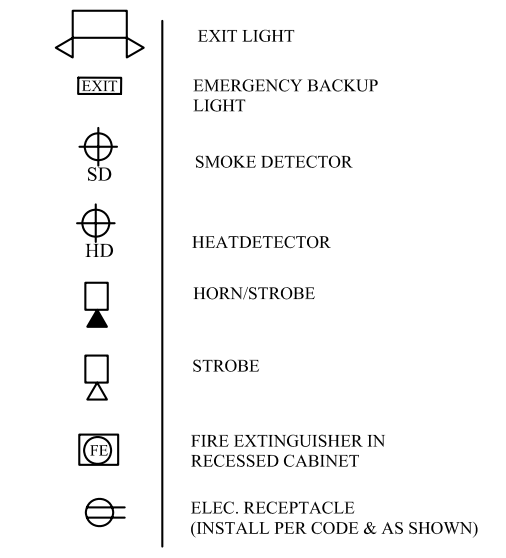
SCALE: 1/2" = 1'-0"



WALL LEGEND



LIFE SAFETY LEGEND:



- LIFE SAFETY AND FIRE ALARM SYSTEMS SHALL BE DESIGNED AND INSTALLED PER NFPA 72 AND PER CITY OF PORTLAND CODE.
 - A SEPARATE PERMIT AND CITY APPROVED CONTRACTOR IS REQUIRED.
 - ALL STROBES TO BE 30 CANDELA UNLESS OTHERWISE NOTED.
 - SYSTEM SHALL BE SUPERVISED BY AN OFF-SITE CERTIFIED BY THE CITY OF PORTLAND THIRD PARTY.

MILK STREET

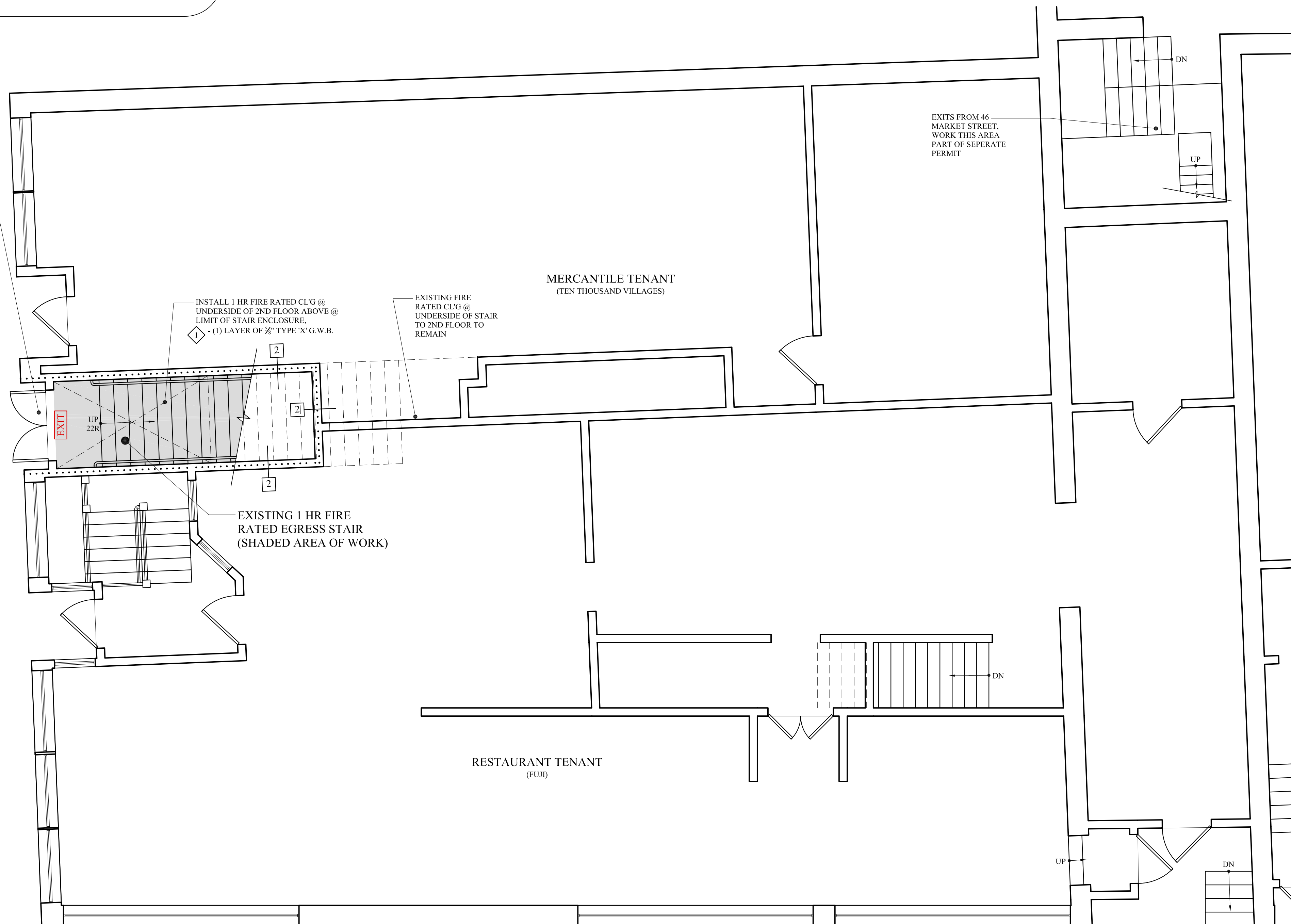
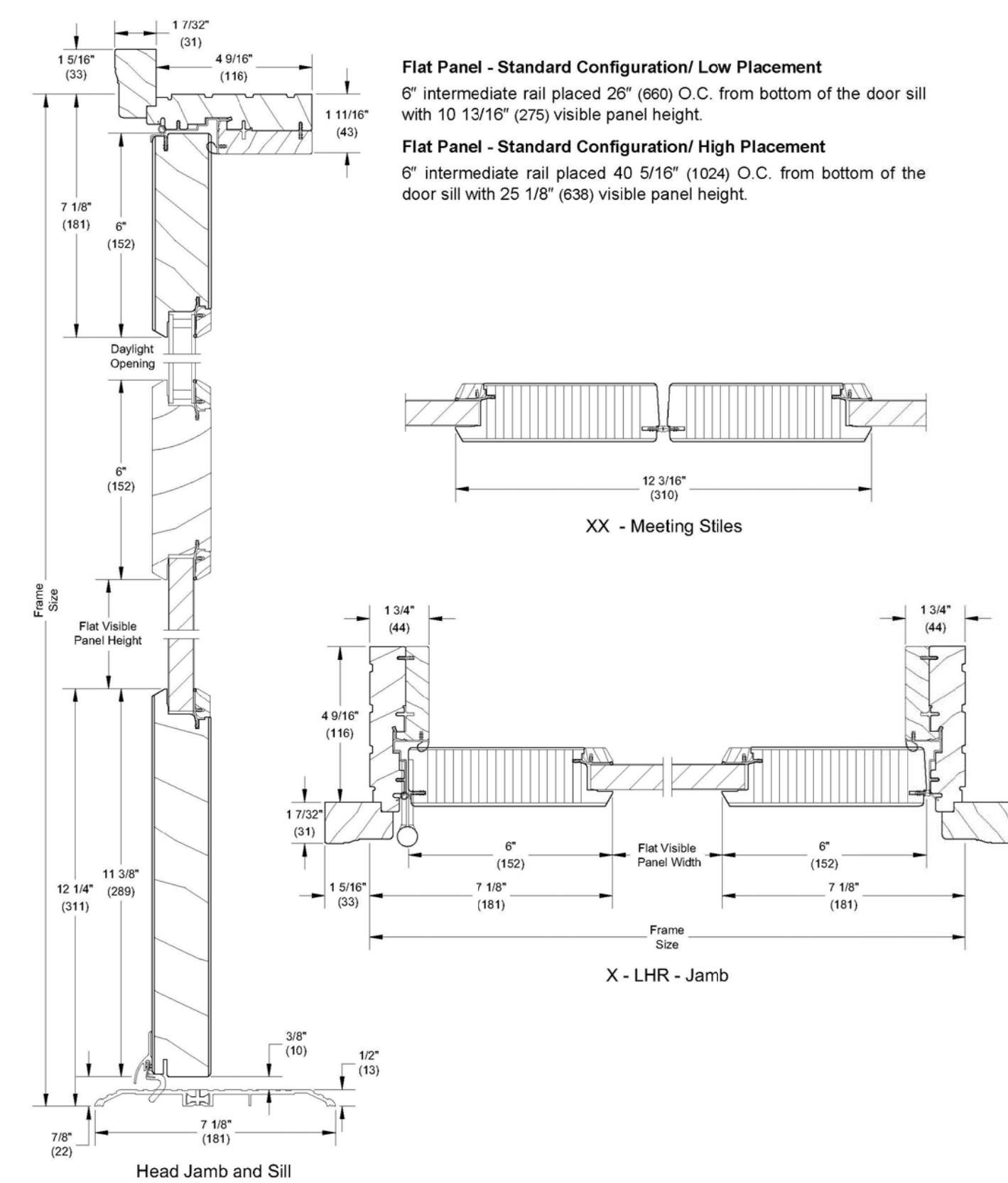
MAIN ENTRY DOOR DEMOLISED DURING RECENT UNAUTHORIZED BUILDING ACCESS. NEW ENTRY DOOR PROPOSED. SEE DOOR ELEVATION & MANUF. DETAIL SHEET



Wood Commercial Door

1 3/4" Commercial Section Details: Flat Panel Placement

Scale: 3" = 1' 0"



FIRST FLOOR PLAN

SCALE: 1/4" = 1'-0"

31 EXCHANGE
31 EXCHANGE STREET
PORTLAND, MAINE

PROPOSED
1ST FLOOR PLAN

REVISIONS
DATE
PROJECT
31 EXCHANGE
DRAWN BY
MRP
CHECK BY
MLM

A-1.1

MARK MUELLER ARCHITECTS
A.I.A.
100 Commercial Street
Suite 205
Portland, Maine 04101
Phone/Fax 207.774.9057
Email: rfm@muellerarchitects.com