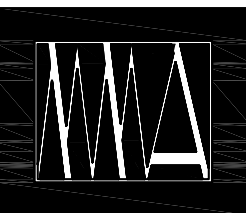
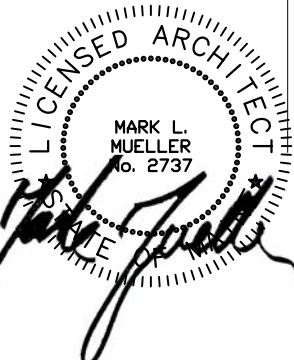
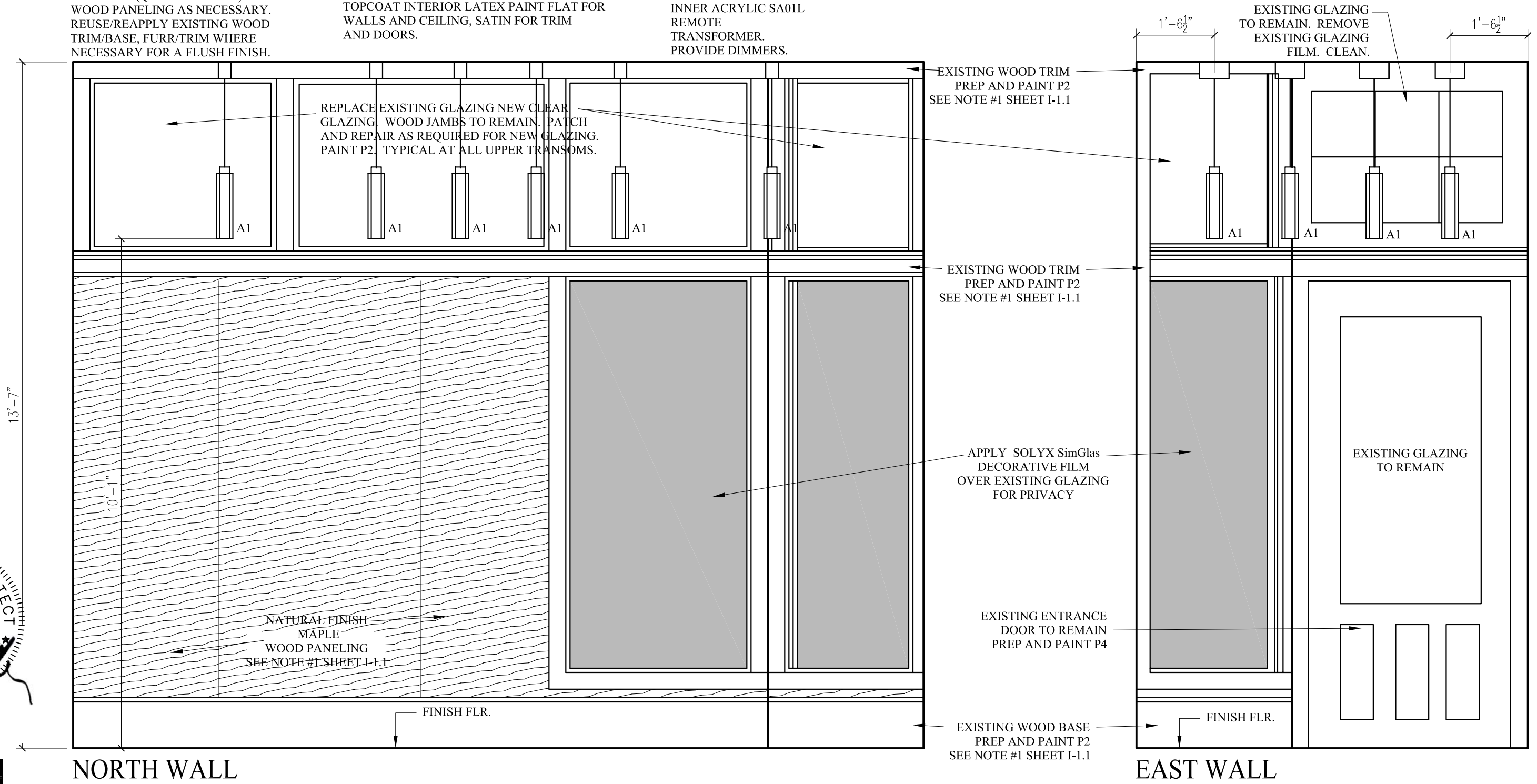


**LIGHTING LEGEND**

1. REMOVE/SAVE EXISTING WOOD TRIM/BASE. INSTALL MAPLE WOOD PANELING (QUARTER SAWN). FUR/TRIM WOOD PANELING AS NECESSARY. REUSE/REAPPLY EXISTING WOOD TRIM/BASE, FUR/TRIM WHERE NECESSARY FOR A FLUSH FINISH.

2. TYPICAL ON ALL PAINTED SURFACES: CLEAN/PATCH/PREP SURFACE. APPLY TWO COATS PRIMER, FINISH WITH TWO LAYERS TOPCOAT INTERIOR LATEX PAINT FLAT FOR WALLS AND CEILING, SATIN FOR TRIM AND DOORS.

A1 LIGHTOLIER DIRECT MOUNT VETRO LED 2-3/8" PENDANT PS SERIES 3500K INNER ACRYLIC SA01L REMOTE TRANSFORMER. PROVIDE DIMMERS.



MARK  
MUELLER  
ARCHITECTS

**45 EXCHANGE STREET-LOBBY**  
PORTLAND, MAINE

INTERIOR ELEVATION 1/2" = 1'-0" **I-1.1**  
PERMIT SET APRIL 15, 2014