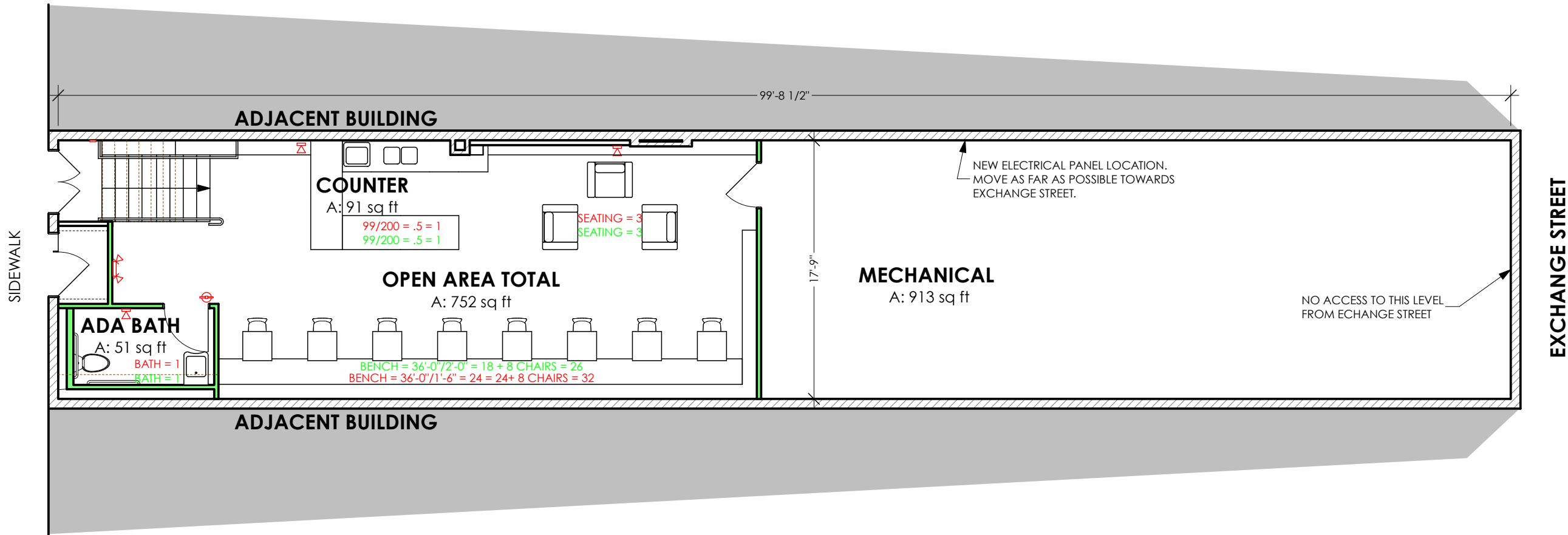


MARKET STREET



1

SITE PLAN

SCALE: 1/8" = 1'-0"

IBC 2009 11.27.12

USES: MERCANTILE M (BOOKSTORE) & ASSEMBLY A-2 (CAFE) WHERE ASSEMBLY TO MORE RESTRICTIVE OCCUPANCY (EXPLAINED ON FLOOR PLAN) = 30

1. SINGLE EGRESS PERMITTED WHEN OL 49 OR LESS IN A & M & EXISTING BUILDINGS ARE NOT REQUIRED TO HAVE ACCESSIBLE MEANS OF EGRESS.
2. AREA LESS THAN 5,000 SF, OL LESS THAN 100 AND AREA IS LEVEL OF DISCHARGE THEREFORE NO SPRINKLER SYSTEM REQUIRED
3. ONE HOUR RATED CEILING ASSEMBLY REQUIRED BETWEEN ASSEMBLY & MERC, NON FOR MERC TO MERC
4. STAIR HEADROOM NOT LESS THAN 80" AND HANDRAILS REQUIRED ON BOTH SIDES W/ SLIP RESISTANT & SECURED TREADS.
5. OL LESS THAN 50 THEREFORE MIN WIDTH OF STAIR PERMITTED TO BE 36" WITH 4 1/2" HANDRAIL PROTRUSION FROM WALL.
6. HEADROOM 7'-6" MINIMUM W/ PROJECTIONS NOT LESS THAN 6'-8" ABOVE FLOOR.

NFPA 101 2009 11.28.12

USES: MERCANTILE CLASS C AS ASSEMBLY DEFINED AS GATHERING OF 50 OR MORE OCCUPANCY (EXPLAINED ON FLOOR PLAN) = 36

1. SINGLE EGRESS PERMITTED IN M CLASS C WHEN TRAVEL DISTANCE LESS THAN 75 FT.
2. SIZE OF SCOPE IS SMALLER THAN REQUIREMENTS THEREFORE NO SPRINKLER SYSTEM REQUIRED
3. NO RATED ASSEMBLY REQUIRED WHEN M ABOVE AND PROJECT IS M.
4. STAIR HEADROOM NOT LESS THAN 80" AND HANDRAILS REQUIRED ON BOTH SIDES W/ SLIP RESISTANT & SECURE TREADS.
5. OL LESS THAN 50 THEREFORE WITH OF STAIR PERMITTED TO BE 36" W/ 4 1/2" HANDRAIL PROTRUSION FROM WALL.
6. STAIR TREADS SHALL ALSO BE FREE OF PROTRUSIONS OR LIPS THAT COULD TRIP STAIR USER.
7. HEADROOM 7'-0" MINIMUM IN EXISTING BUILDINGS W/ PROJECTIONS NOT LESS THAN 6'-8" ABOVE FLOOR.
8. EXIT DOOR IN M CLASS C PERMITTED TO SWING INWARD AS IT IS LEVEL OF DISCHARGE.

A-1.0 SITE PLAN

THOMAS CAFE

DARREN THOMAS
66 MARKET ST, PORTLAND, ME 04101

DRAFTSPERSON:
CAT SUMISLASKI

DATE OF ISSUE:
1/3/13

PROJECT STATUS:
LIFE SAFETY REVIEW

CALEB JOHNSON ARCHITECTS

265 MAIN ST, UNIT 201, BIDDEFORD, MAINE 04005
T: 207.283.8777 F: 207.283.0087
WWW.CALEBJOHNSONARCHITECTS.COM

MARKET STREET

RELOCATED PULL STATION

SLOPED PROTRUSION ON GROUND

ADJACENT BUILDING

1
A-3.1

SIDEWALK

NEW WALL SET ON MASONRY HALF WALL

DN

HANDRAIL

"EXIT" SIGN W/EMERGENCY FLOOD LIGHTS

STROBE ONLY

FIRE EXTINGUISHER

PLUMBING TO BE REDONE FOR HEADROOM

TABLE TYPICAL OF 8

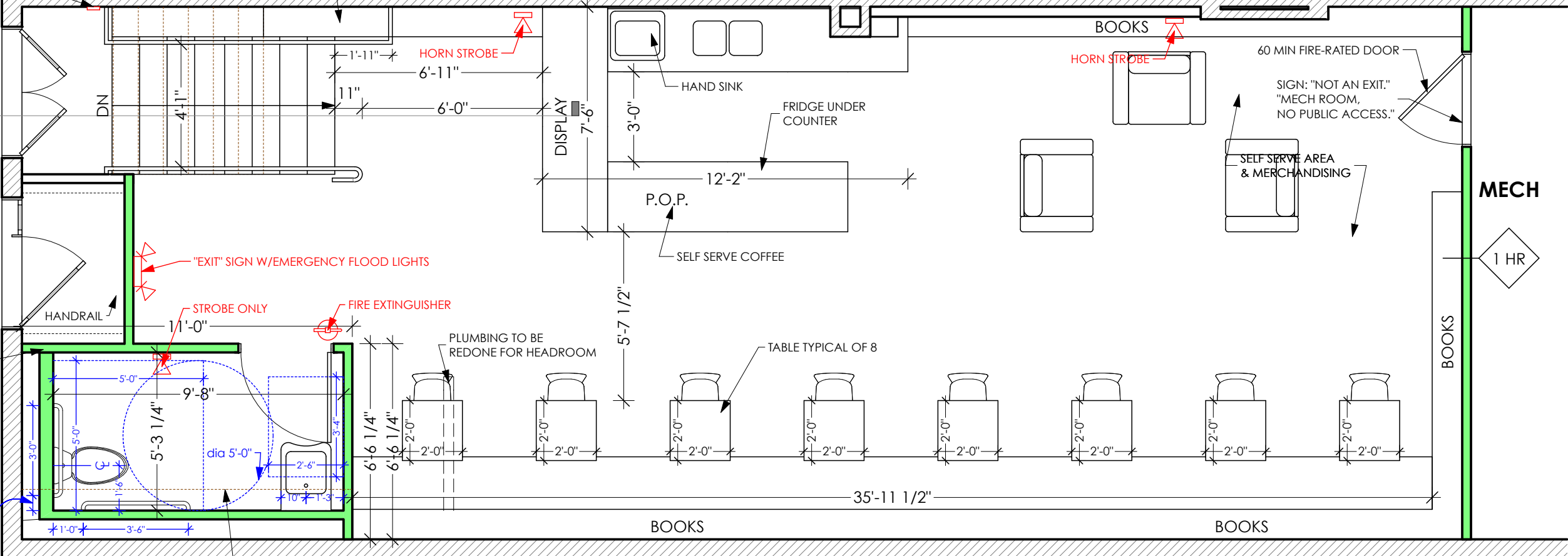
REMOVE 1'-0" LEDGE FOR ADA COMPLIANCE

ADJACENT BUILDING

1

GROUND FLOOR

SCALE: 1/4" = 1'-0"



NOTES:

- 1. CEILING TO BE SMOKE TIGHT.
- 2. DEMOLISH ALL EXISTING EXPOSED SPRINKLER PIPES AND HEADS.

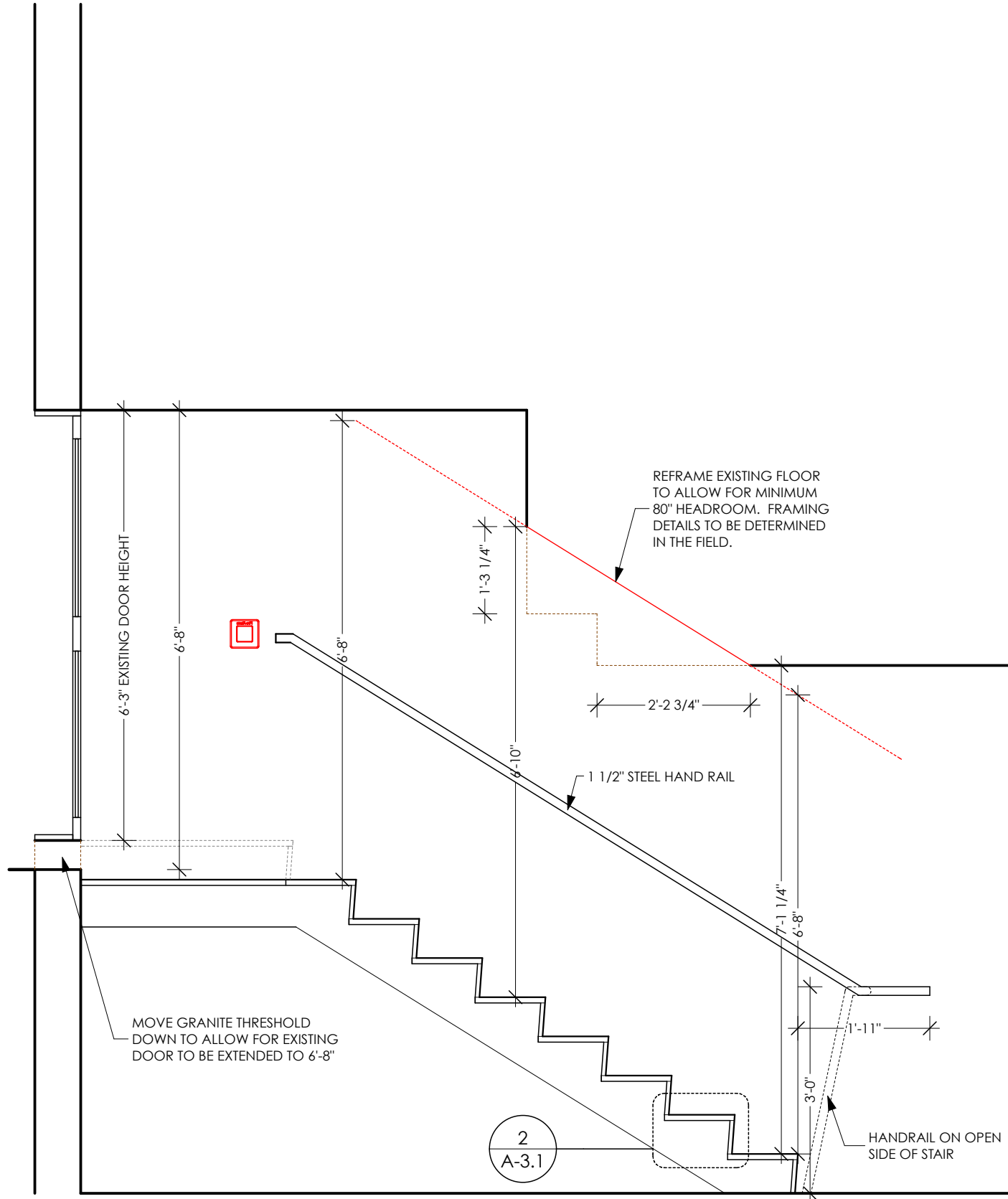
A-1.1 FLOOR PLAN

THOMAS CAFE

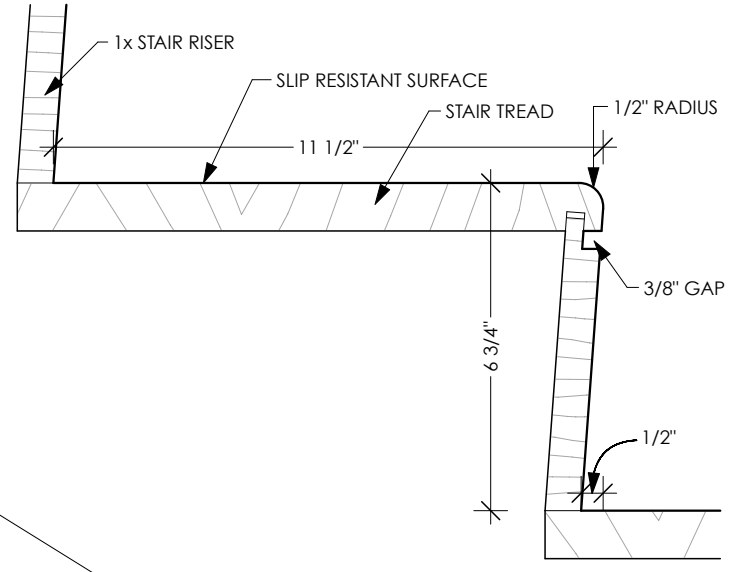
DARREN THOMAS
66 MARKET ST, PORTLAND, ME 04101

DRAFTSPERSON:
CAT SUMISLASKI
DATE OF ISSUE:
1/3/13
PROJECT STATUS:
LIFE SAFETY REVIEW

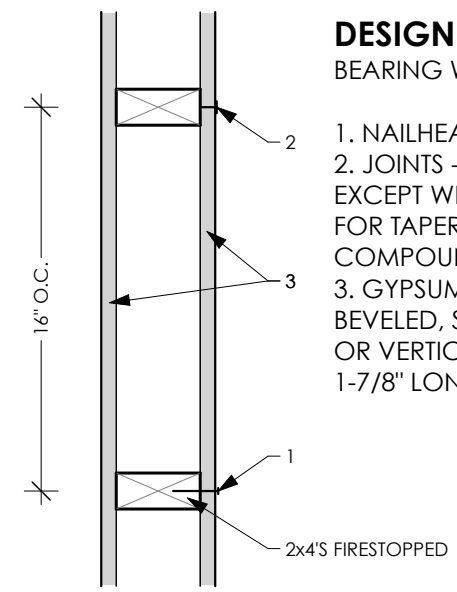
CALEB JOHNSON ARCHITECTS
265 MAIN ST, UNIT 201, BIDDEFORD, MAINE 04005
T: 207.283.8777 F: 207.283.0087
WWW.CALEBJOHNSONARCHITECTS.COM



1 STAIR SECTION
SCALE: 1/2" = 1'-0"



2 STAIR DETAIL
SCALE: 3" = 1'-0"



3 1 HR RATED WALL
SCALE: 1 1/2" = 1'-0"

DESIGN # U305

BEARING WALL RATING - 1 HR

1. NAILHEADS - EXPOSED OR COVERED W/ JOINT COMPOUND.
2. JOINTS - EXPOSED OR COVERED W/ FIBER TAPE AND JOINT COMPOUND, EXCEPT WHERE REQUIRED FOR SPECIFIC EDGE CONFIGURATION. FOR TAPERED, ROUNDED-EDGE WALLBOARD, JOINTS COVERED WITH JOINT COMPOUND OR FIBER TAPE AND JOINT COMPOUND. JOINTS REINFORCED.
3. GYPSUM BOARD - 5/8" THICK WALLBOARD PAPER OR VINYL SURFACED, WITH BEVELED, SQUARE, OR TAPERED EDGES, APPLIED EITHER HORIZONTALLY OR VERTICALLY. WALLBOARD NAILED 7" O.C. W/ 6d CEMENT COATED NAILS 1-7/8" LONG, 0.0915" SHANK dia AND 1/4" DIAM HEADS.