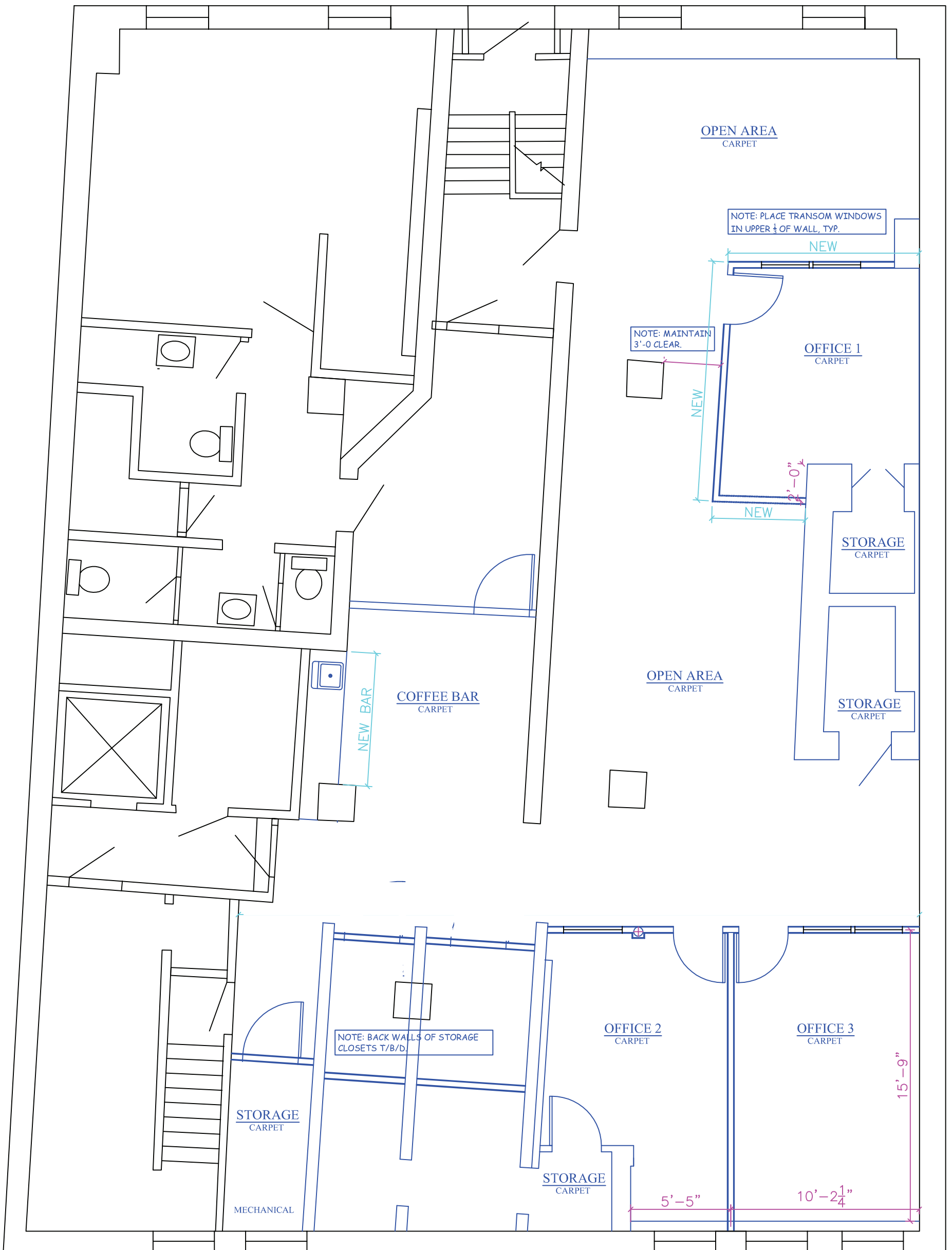


Market Street



**Floor Plan**

SCALE:  $\frac{3}{16}$ "=1'-0

Exchange Street

A-0.1

**Basement**

Scale: As noted  
Date: June 3, 2011  
Dwg: Audrey Rolio

**Office Renovation**

95 Exchange Street  
Portland, Maine 04102

Top of Exchange, LLC.  
42 Market St.  
Portland, ME 04102  
207-774-1000