



Neokraft
SIGN S

Neokraft Signs Inc.
686 Main Street
Lewiston, Maine 04240
Telephone: 207.782.9654
Facsimile: 207.782.0009
1.800.339.2258
http://www.neokraft.com

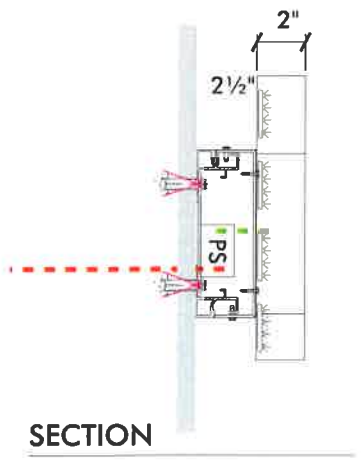
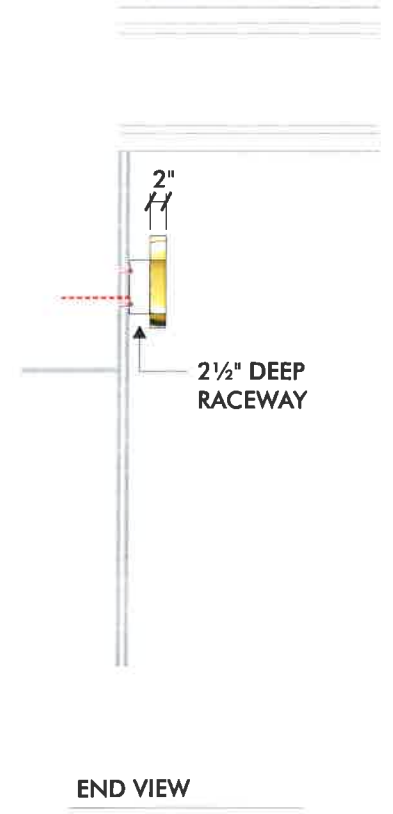
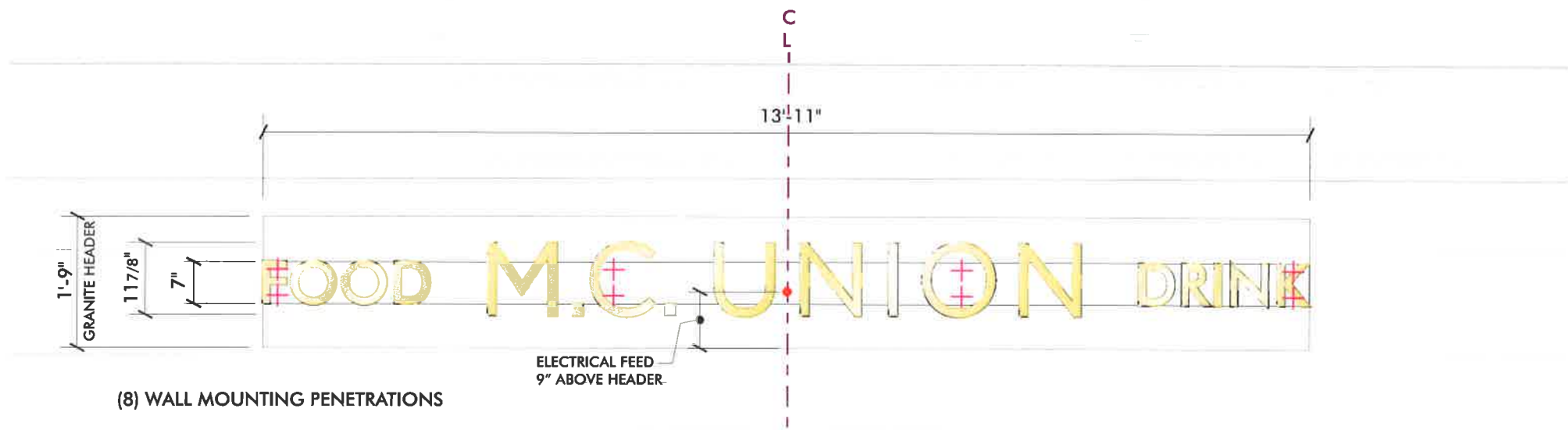
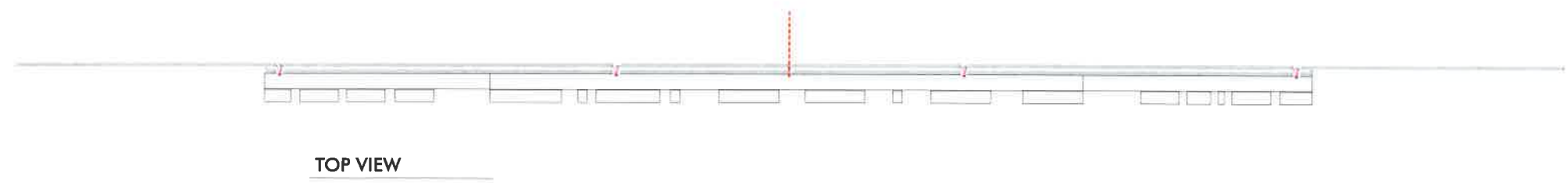
Custom Sign Fabrication

These plans are the exclusive property of Neokraft Signs, Inc. and are the result of the original work of its employees. They are submitted to Neokraft's client for the sole purpose of consideration of whether to purchase these plans or to purchase from Neokraft a sign manufactured according to these plans.

Distribution or exhibition of these plans to anyone other than employees of said client, or use of these plans to construct a sign similar to the one embodied herein, is expressly forbidden. In the event that such exhibition or construction occurs, Neokraft expects to be reimbursed \$1500 in compensation for time and effort entailed in creating these plans.

Press Hotel
19509

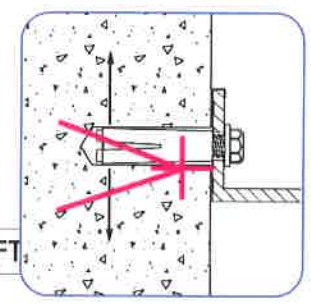
PERMIT	
Location:	390 Congress Street Portland, Maine
Drawing No.:	2 of 3
Drawn by:	BK Rep.: RM
Date:	04.10.2015
Lead No.:	ML022526
Gen Ref.:	18472, ML020857



A2.04 4

2" DEEP FABRICATED LETTERS, POLISHED BRASS FINISH, IVORY ACRYLIC FACES, WHITE 'LED' LIGHTING, STUD MOUNTED BY 'STEEL-ART' PO# _____, LETTERS MOUNT TO FABRICATED ALUM. RACEWAY BACKGROUND (SC#2042), PAINTED (COLOR TBD), RACEWAY MOUNTED TO WALL WITH 'LOK-BOLT' EXPANSION ANCHORS AS INDICATED, SEAL ALL PENETRATIONS, 120v-20amp ELECTRICAL TO SIGN LOCATION BY OWNER

CONGRESS STREET - ENTRY SIGN - INTERNALLY LIGHTED LETTERS 14 SQ. FT.
SCALE: 1/2"=1'-0" (1) SET REQUIRED



LOK-BOLT™ ANCHORING SYSTEM AS MFG BY POWERS FASTENERS, NEW ROCHELLE, NY OR EQUAL: A PRE-ASSEMBLED SINGLE UNIT SLEEVE ANCHOR FOR ANCHORING INTO SOLID AND HOLLOW CONCRETE AND MASONRY SUBSTRATES, PATENTED COMPRESSION RING PULLS FIXTURE FLUSH TO THE WORK SURFACE AVAILABLE IN CARBON STEEL AND TYPE 304 STAINLESS STEEL; SEVERAL HEAD STYLES
SIZE RANGE: 1/4" DIA. x 5/8" TO 3/4" DIA. x 7 1/2"