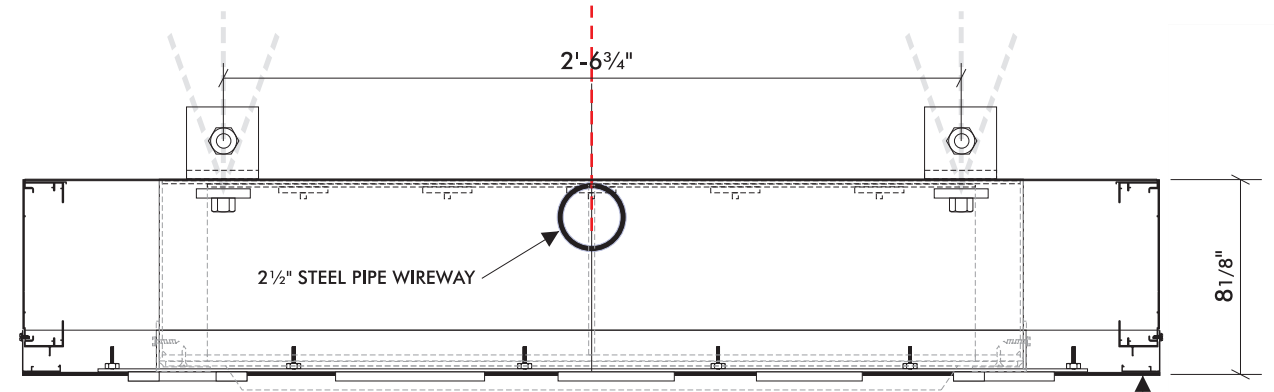
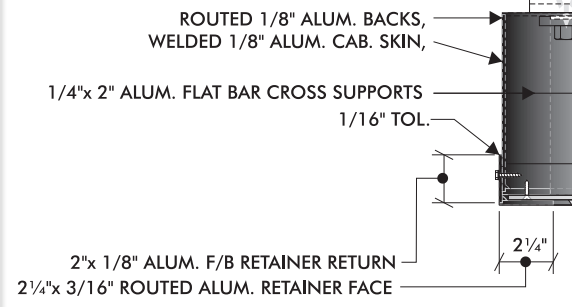


ELECTRICAL PENETRATION THRU WALL CENTERED IN CABINET



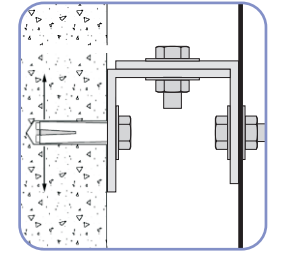
S/C ALUM. S/F CAB. 8" 2-PART #1927, 15/8" RET. #1944, 1/8" ALUM., ROUTED LETTER OPENINGS, 1/2" CLEAR ACRYLIC PUSH-THRU LETTERS, 1st/2nd SFC WHITE TRANSL. VINYL

MOUNTING (2) PER ROUND SIGN



FABRICATED ROUND CABINETS

CABINETS/MOUNTING - DETAILS
SCALE: 1 1/2" = 1'-0"



LOK-BOLT™ ANCHORING SYSTEM AS MFG BY POWERS FASTENERS, NEW ROCHELLE, NY OR EQUAL: A PRE-ASSEMBLED SINGLE UNIT SLEEVE ANCHOR FOR ANCHORING INTO SOLID AND HOLLOW CONCRETE AND MASONRY SUBSTRATES, PATENTED COMPRESSION RING PULLS FIXTURE FLUSH TO THE WORK SURFACE, AVAILABLE IN CARBON STEEL AND TYPE 304 STAINLESS STEEL; SEVERAL HEAD STYLES
SIZE RANGE: 1/4" DIA. x 5/8" TO 3/4" DIA. x 7 1/2"

3"x 3" MATCHING SHOES
SLEEVE-ANCHOR - MATCHING SHOES MOUNTING DETAIL
NOT TO SCALE

CIRCULAR ALUMINUM CABINETS, PAINTED BLACK (DARK SILVER RETAINER FACE _____), FORMED/DEBOSSED ACRYLIC PAN FACES, SEE PAGE 1 FOR FACE DETAILS,
'HOTEL' - CABINET PAINTED BLACK, PUSH-THRU WHITE ACRYLIC TEXT,
WHITE 'LED' ILLUMINATION INSIDE CABINETS, POWER SUPPLIES IN HOTEL CABINET,
MOUNTED TO WALL WITH MATCHING SHOES, 2 1/2 SCHD. 40 PIPE" WIREWAY CONNECTING CABINETS, SS BOLTS/NUTS/WASHERS, SEE DETAIL, ELECTRICAL FEED IN CONDUIT THRU WALL, ALL WALL PENETRATIONS TO BE SEALED WITH SILICONE SEALANT

SIGN NO. 2—SINGLE FACE INT. ILLUM. WALL ID
SCALE: 3/8" = 1'-0" (1) REQUIRED

Press Hotel
18472

Location: 119 Exchange Street
Portland, Maine

Drawing No.: 3 of 8

Drawn by: BK Rep.: RM

Date: 11.03.2014

Revised: 12.19.2014

Lead No.: ML020857

Gen Ref.: