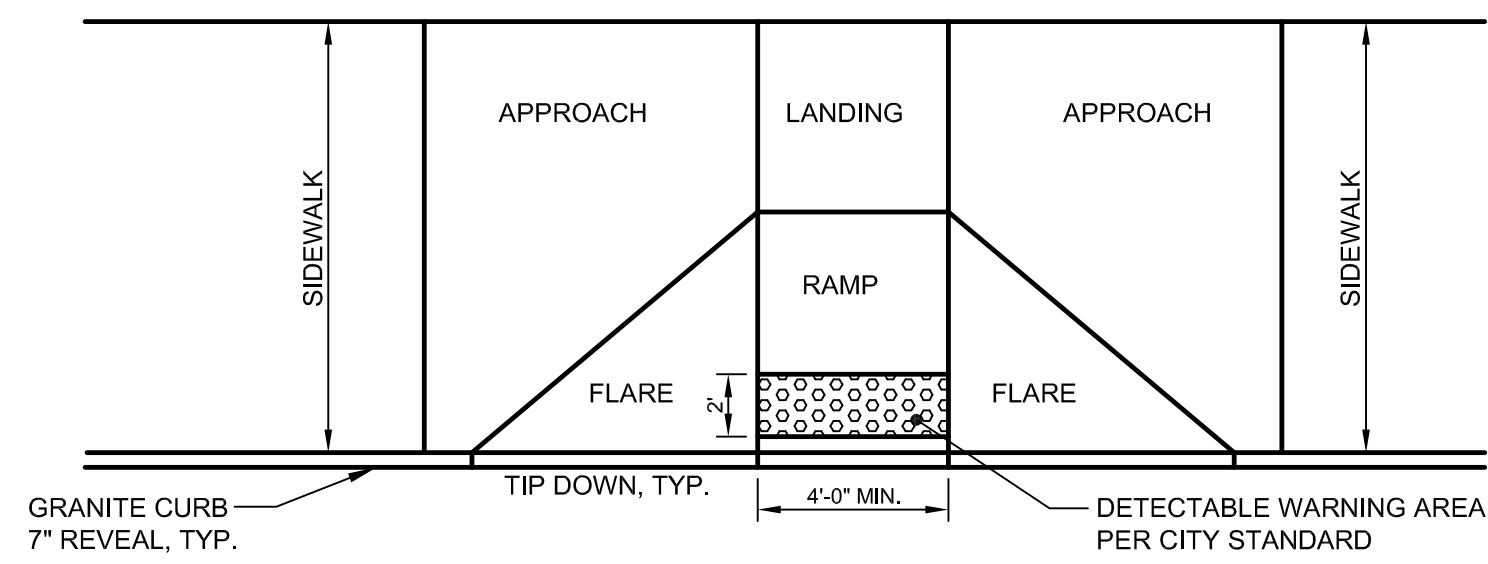


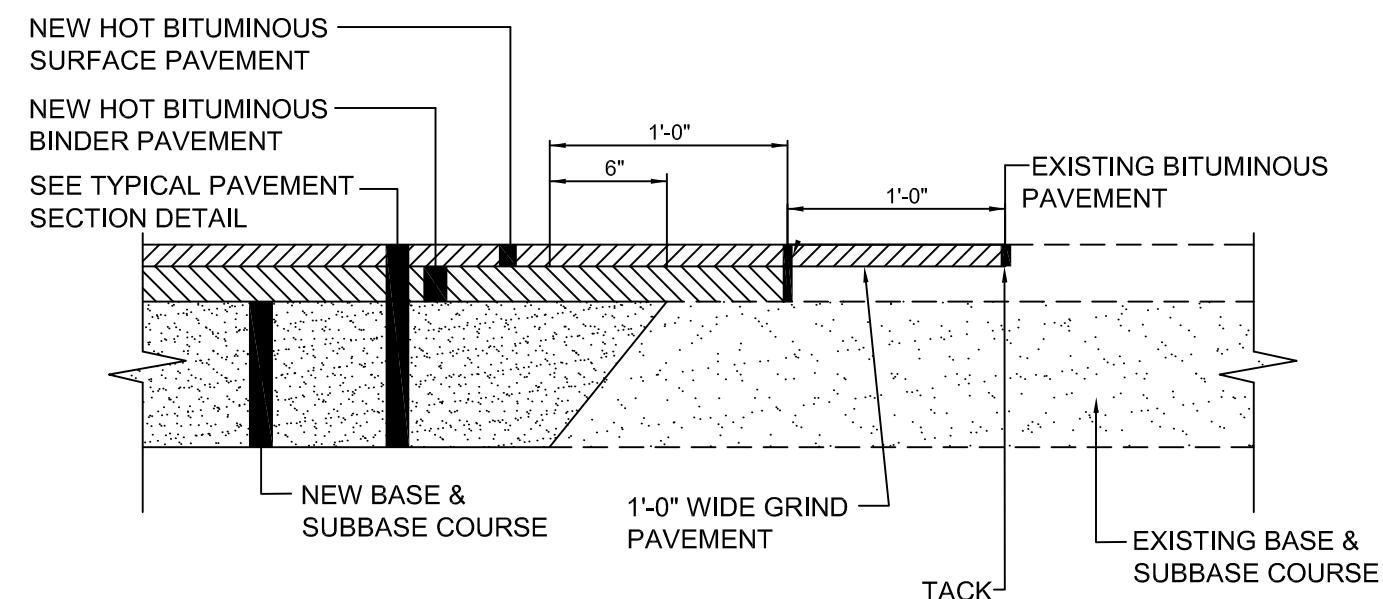
NOTES:

ALL RAMP SHALL COMPLY WITH ADA STANDARDS.
GRANITE CURB ADJACENT TO RAMP SHALL BE FLUSH WITH STREET.
FLARES AND RAMP SHALL CONSIST OF SIMILAR MATERIAL TO ADJACENT SIDEWALK

DESIGN ELEMENT	SLOPE IN DIRECTION OF TRAVEL	CROSS SLOPE
APPROACH	8.33% MAXIMUM	2%
LANDING	2%	2%
RAMP	8.33% MAXIMUM	MATCH STREET GRADE
FLARE	10% MAX. AT CURB FACE	-
SIDEWALK	MATCH STREET GRADE	2%



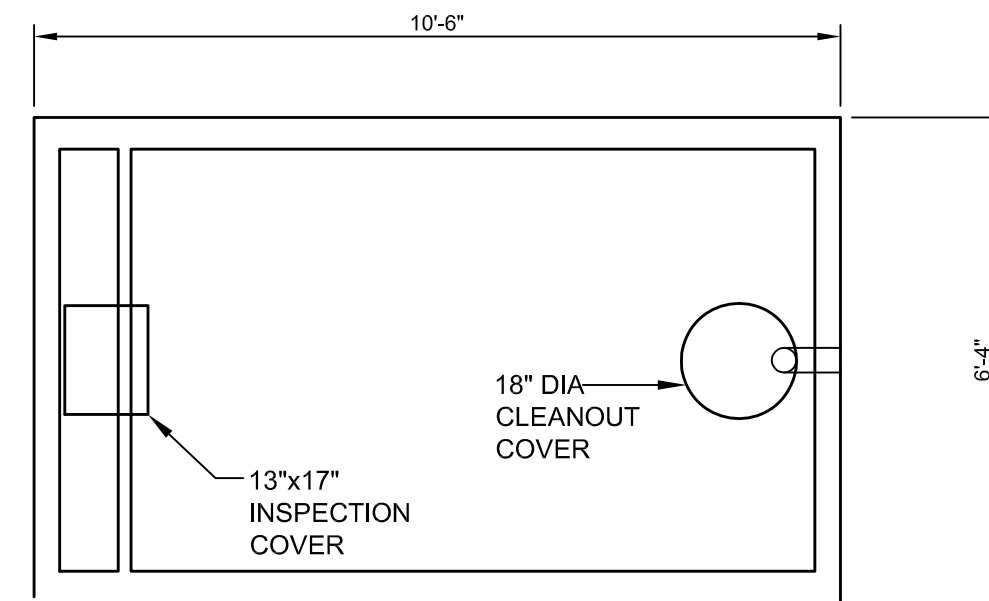
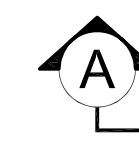
PERPENDICULAR ADA RAMP LAYOUT FOR WIDE SIDEWALK WITH NO ESPLANADE
N.T.S.



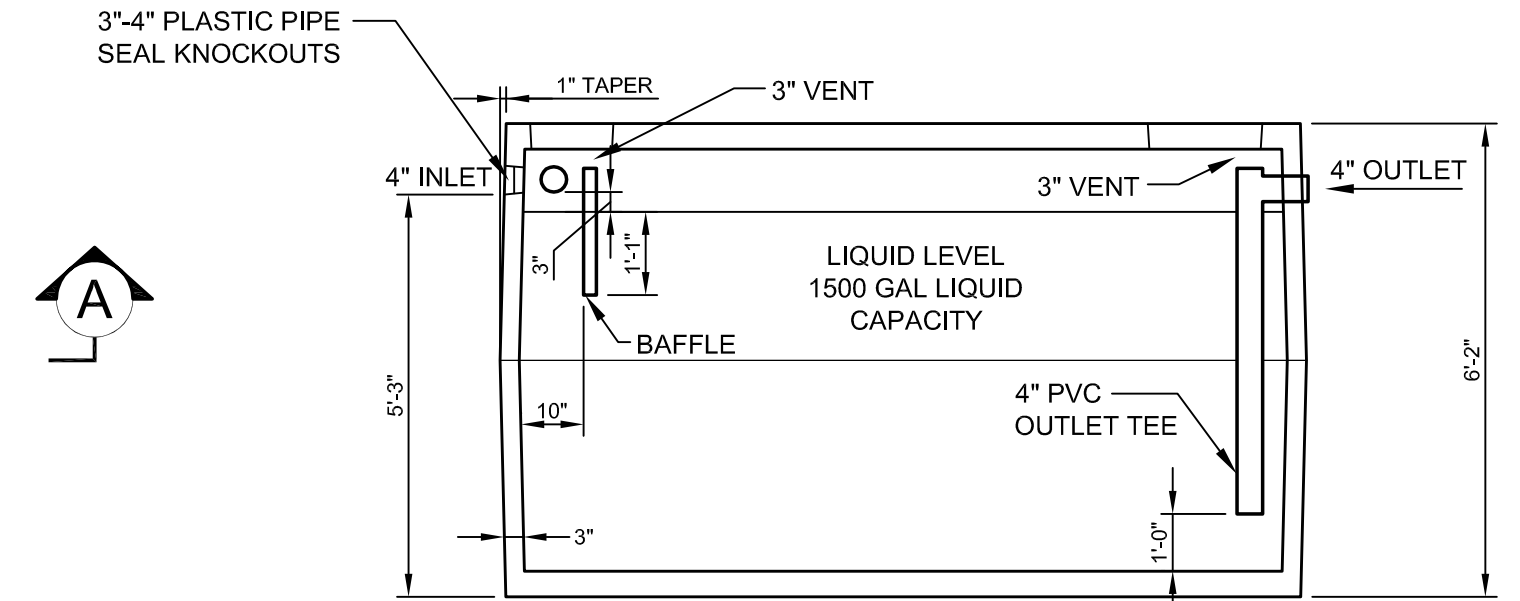
NOTES:

- USE THIS DETAIL FOR THE RADIUS FILLET AT THE DRIVEWAY ENTRANCE TO THE PUBLIC STREETS OR TO MATCH PARKING LOT/DRIVE PAVEMENTS WHERE WIDENING OF EXISTING PAVEMENT AREA IS REQUIRED.
- WHERE SURFACE PAVEMENT HAS NOT BEEN INSTALLED THE 2'-0" WIDE GRIND IS NOT REQUIRED.

PAVEMENT SAWCUT DETAIL
N.T.S.



PLAN VIEW

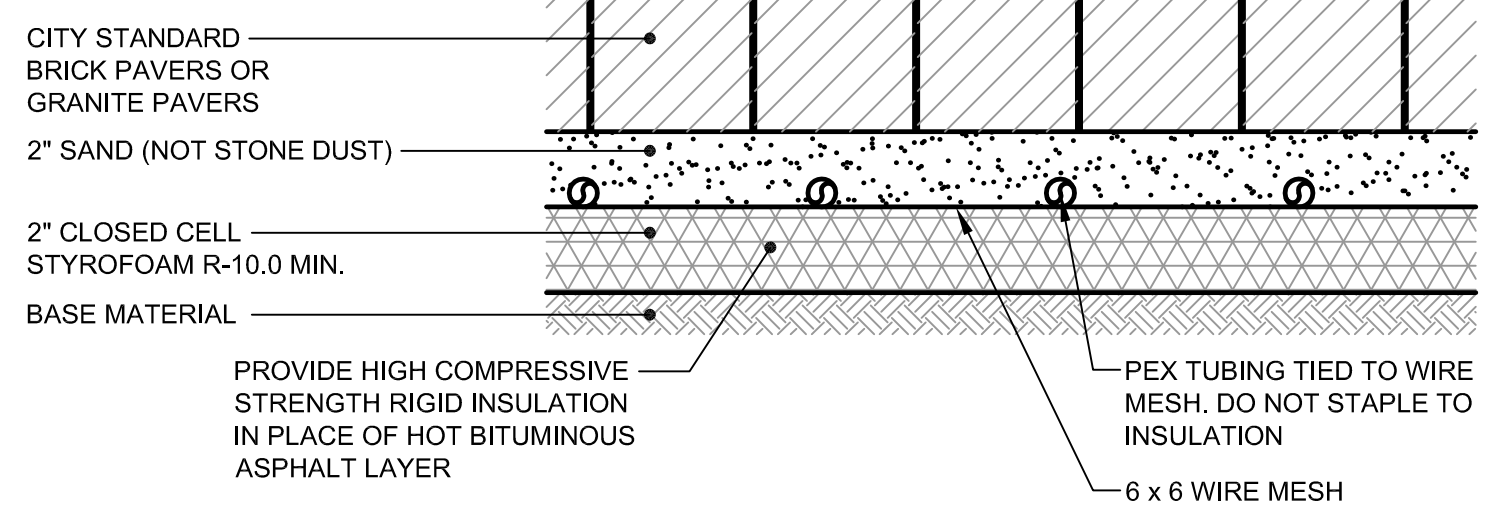


SECTION A-A

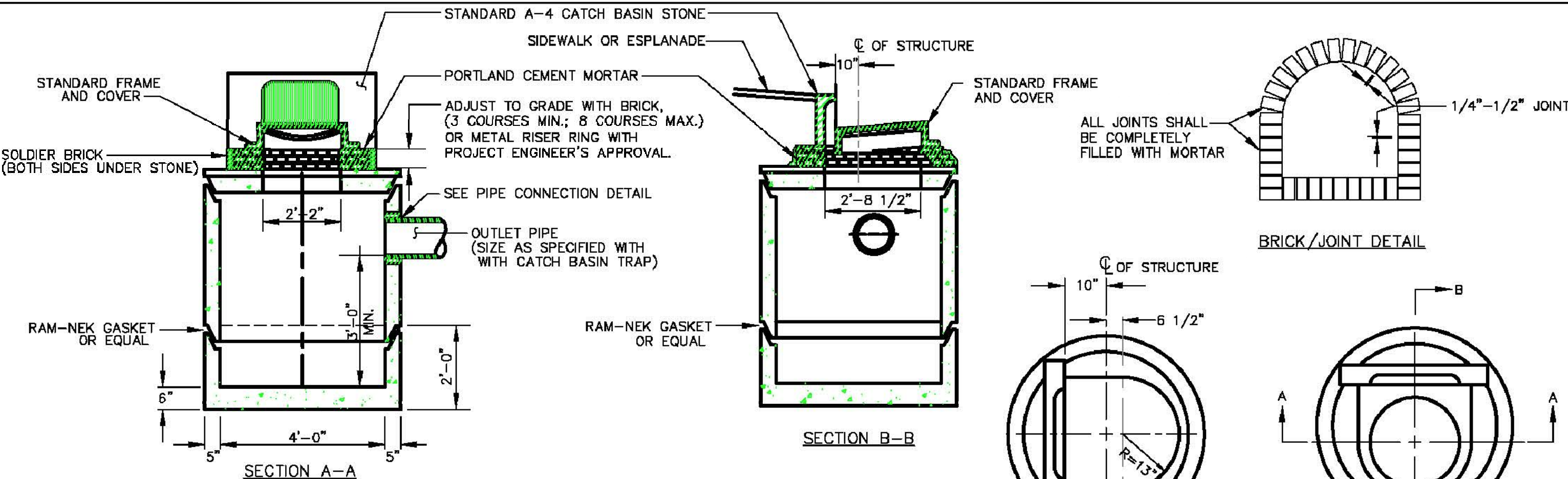
NOTES:

- CONCRETE: 4000 PSI AFTER 28 DAYS
- REINFORCING: 6x6/10x10 W.W.M. & FIBERS
- HEAVY DUTY SEPTIC TANK TOPS REINFORCED WITH 5/8" REBAR @ 12" O.C.E.W.
- KEYED JOINT SEALED WITH BUTYL RUBBER.
- EXCAVATION MUST BE AT LEAST 12" WIDER & LONGER THAN TANK SIZE
- TOTAL STRUCTURE WEIGHT = 12,500 LBS
- INSTALL APPROPRIATE CONCRETE RISER SECTIONS OVER INSPECTION & CLEANOUT OPENINGS TO BRING COVERS TO GRADE.

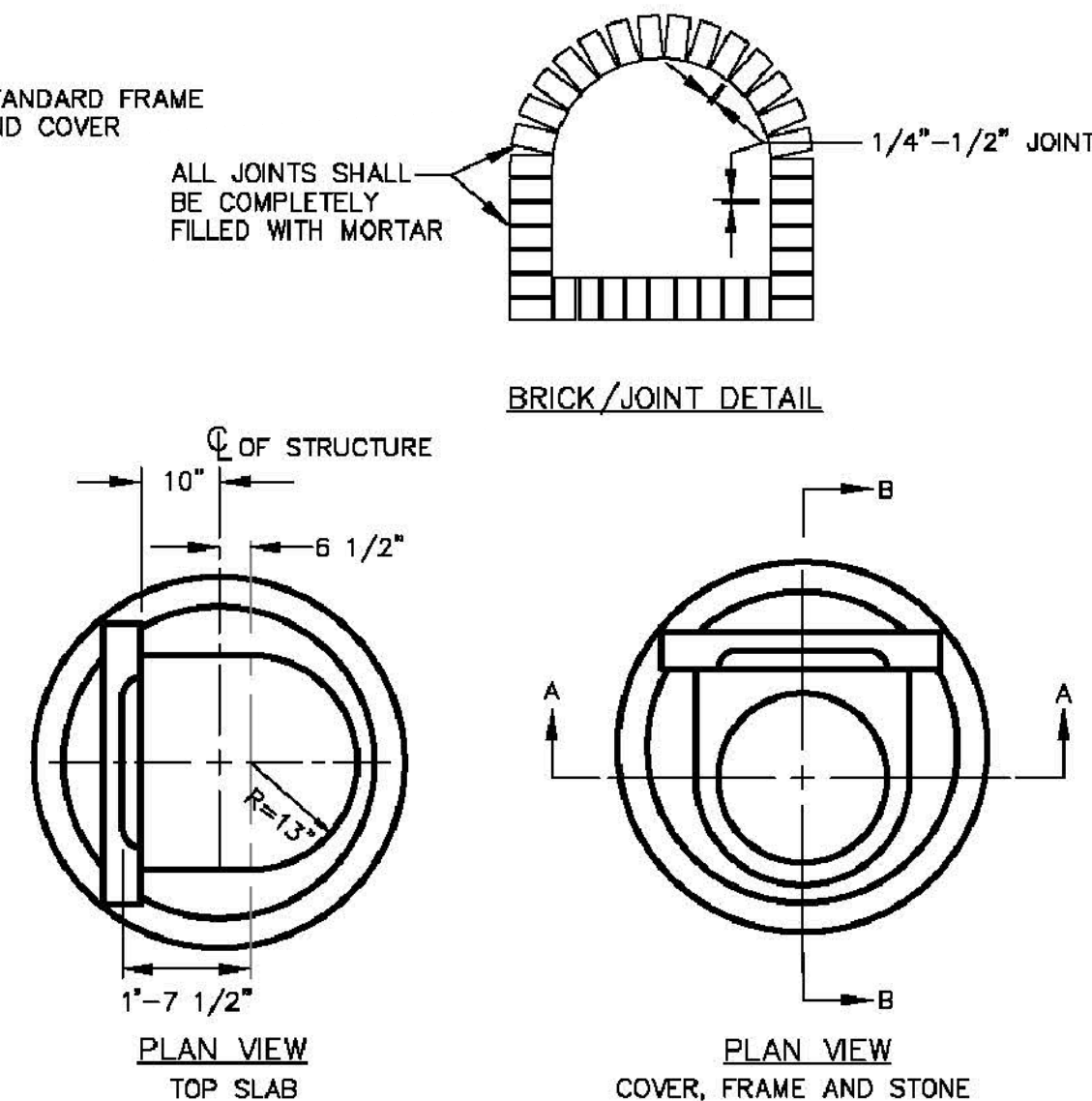
GREASE TRAP DETAIL
N.T.S.



SECTION THRU RADIANT SNOW MELT TUBING ON GRADE
N.T.S.



PRECAST CATCH BASIN ALONG GUTTER LINE DETAIL
N.T.S.



PLAN VIEW TOP SLAB

PLAN VIEW COVER, FRAME AND STONE

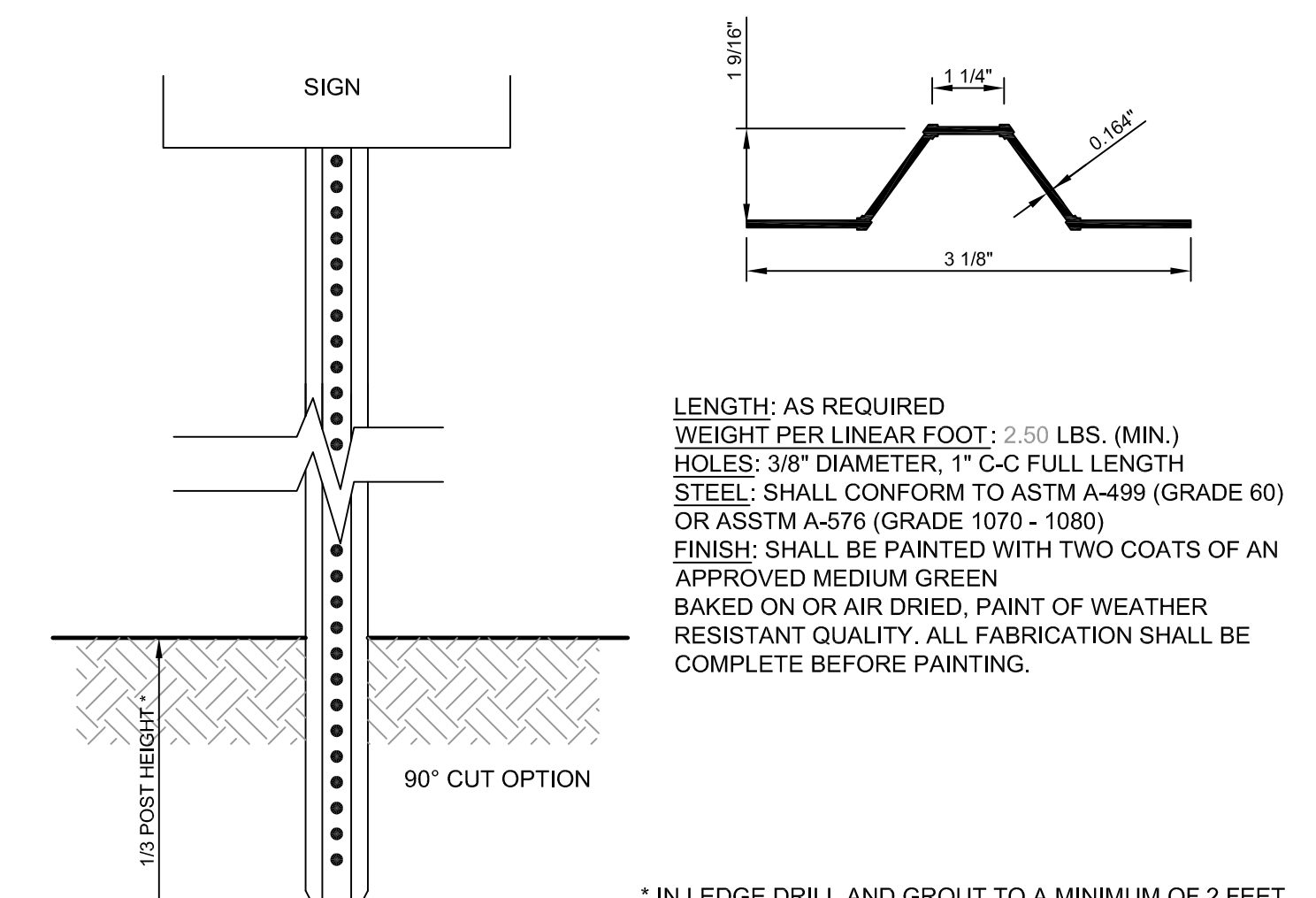
NOTE: THE SILT SACK WILL BE MANUFACTURED FROM A WOVEN POLYPROPYLENE FABRIC THAT MEETS OR EXCEEDS THE FOLLOWING SPECIFICATIONS:

PROPERTIES	TEST METHOD	UNITS
GRAB TENSILE STRENGTH	ASTM D-4632	265 LBS
GRAB TENSILE ELONGATION	ASTM D-4633	20 %
PUNCTURE	ASTM D-3786	420 PSI
MULLEN BURST	ASTM D-4533	45 LBS
TRAPEZOID TEAR	ASTM D-4355	90 %
UV RESISTANCE	ASTM D-4751	20 US SIEVE
APPARENT OPENING SIZE	ASTM D-4491	200 GAL/MIN/50 FT
FLOW RATE PERMITTIVITY	ASTM D-4491	1.5 SEC -1

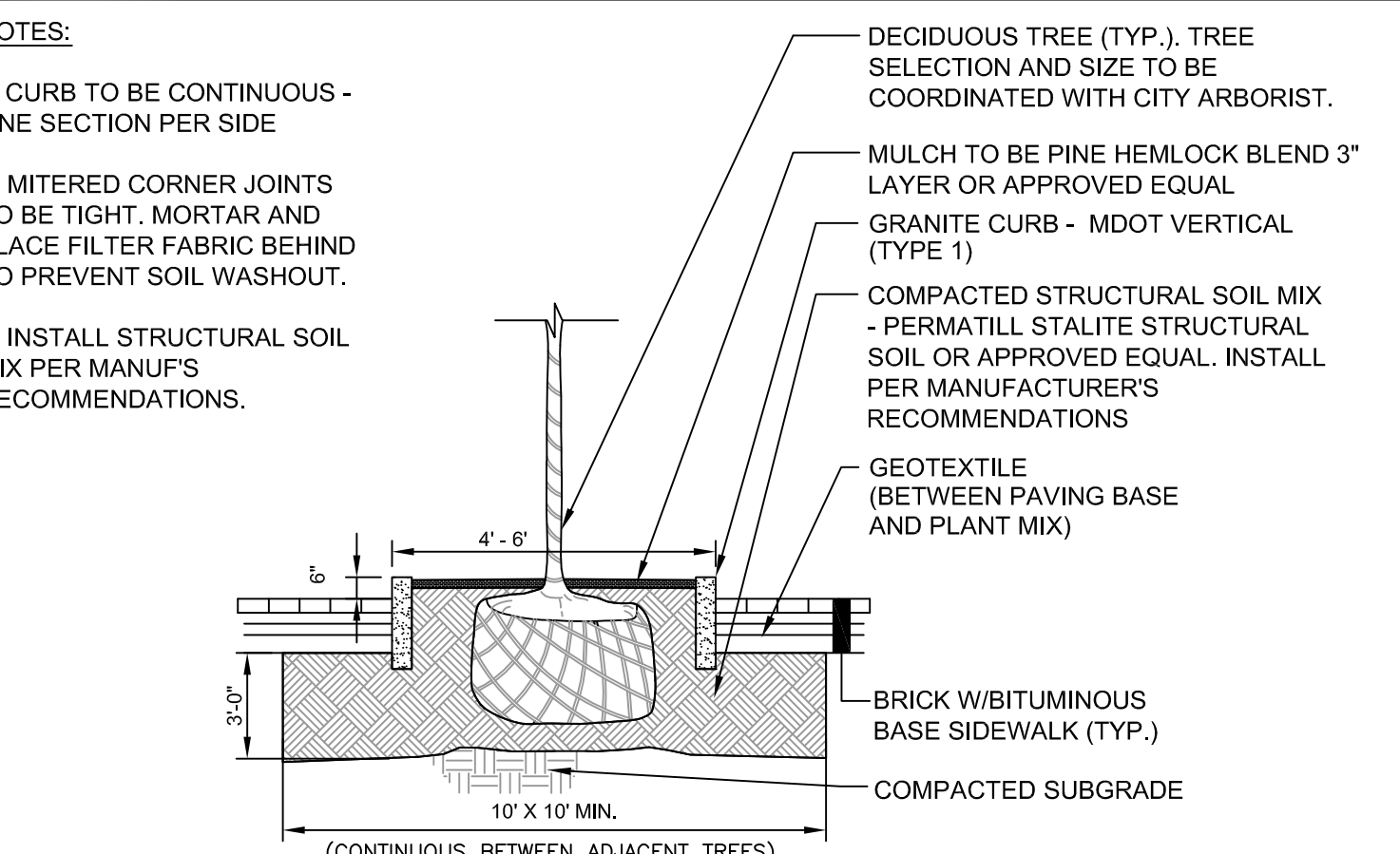
HIGH-FLOW SILT SACK (FOR USE IN LOW POINTS/SAGS) (FOR AREAS OF MODERATE TO HEAVY PRECIPITATION AND RUN-OFF)

NOTE: SILT SACK SIZE & DIMENSIONS PER MANUFACTURER'S SPECIFICATIONS.

SILT SACK DETAIL & SPECIFICATIONS
N.T.S.



U-CHANNEL METAL SIGN POST
N.T.S.



TREE PLANTER DETAIL
N.T.S.

Prepared For: 119 DEVELOPMENT LLC C/O DEVELOPERS COLLABORATIVE LLC 17 CHESTNUT STREET PORTLAND, ME 04101	Project: HOTEL REDEVELOPMENT PORTLAND, ME	Revisions:
	119 EXCHANGE STREET PORTLAND, MAINE	12/28/12 Final Plan Submission
		10/29/12 Schematic Sidewalk Layout for Review
		09/18/12 Preliminary Site Plan Application
Architect: ARCHETYPE architects 48 Union Wharf Portland, Maine 04101 (207) 772-6022 Fax (207) 772-4056	Date: SEPT. 2012	Scale: AS NOTED
DELUCA-HOFFMAN ASSOCIATES, INC. 778 MAIN STREET, SUITE 8 SOUTH PORTLAND, ME 04106 207.775.1121 WWW.DELUCAHOFFMAN.COM	P.E. STEPHEN BUSHEY LIC. # 7429	C-4.0