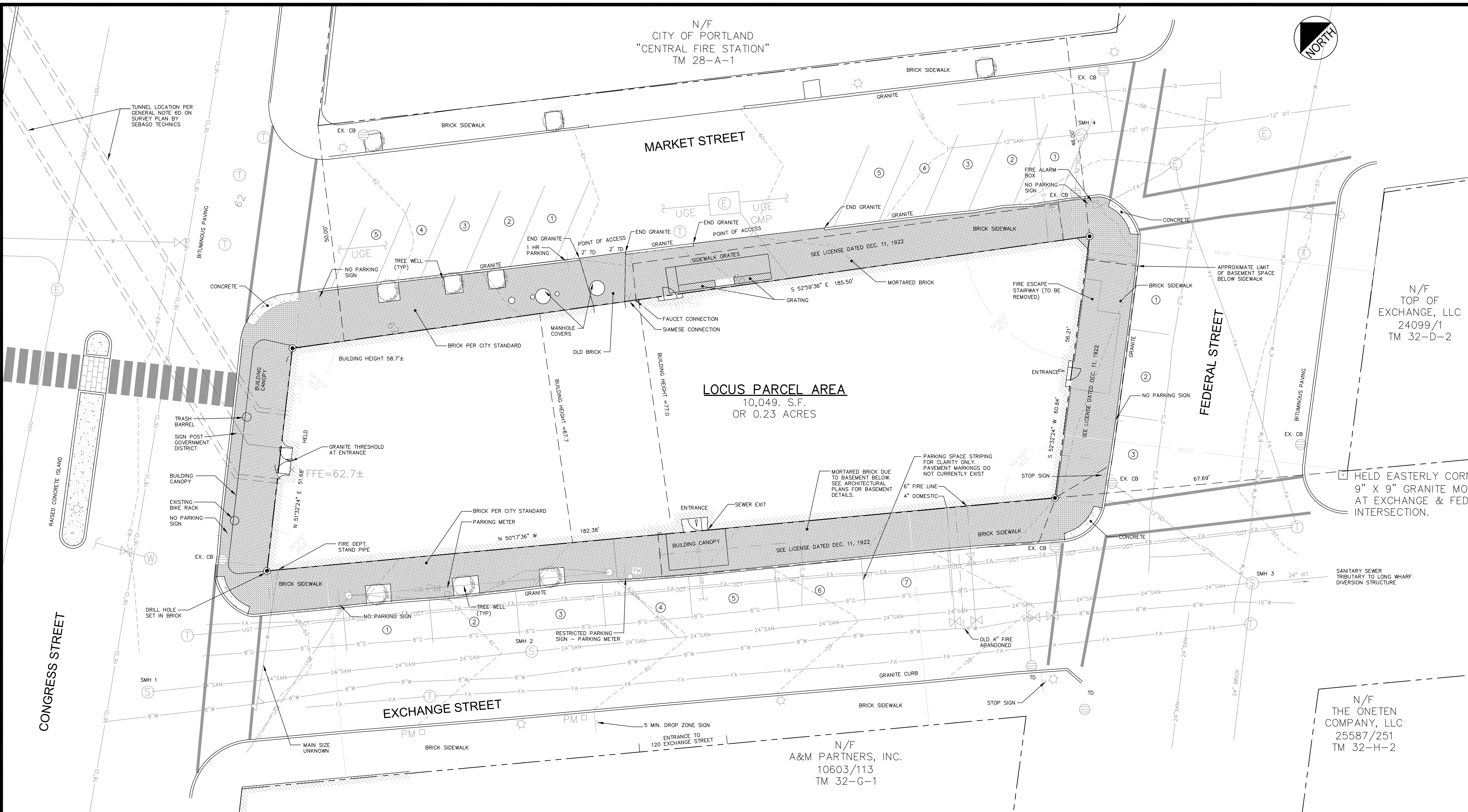
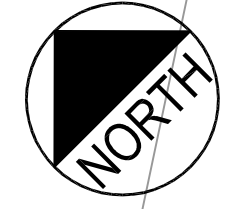


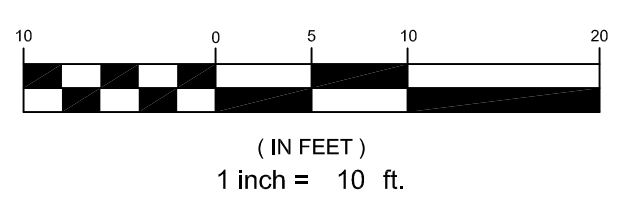
N/F
CITY OF PORTLAND
"CENTRAL FIRE STATION"
TM 28-A-1



LOCUS PARCEL AREA
10,049. S.F.
OR 0.23 ACRES

NOTE:
1. SPACES 4 - 7 ON EXCHANGE STREET, SPACES 1 - 3 ON FEDERAL STREET AND ALL SPACES ON MARKET STREET ARE IDENTIFIED AS UNRESTRICTED PARKING SPACES. IT IS THOUGHT THAT PARKING METERS WERE NOT INSTALLED AT THESE LOCATIONS DUE TO THE BASEMENT SPACE LOCATED UNDERNEATH THE SIDEWALK PER LICENSE AGREEMENT DATED DEC. 11, 1922.

PLAN REFERENCE
1. "ALTA / ACSM LAND TITLE SURVEY OF CONGRESS STREET SITE, 390 CONGRESS STREET, PORTLAND, MAINE FOR: GRAND METRO BUILDERS OF NEW YORK CORP." BY SEBAGO TECHNICS, DATED 07.20.09.
2. PROJECT BENCHMARK: USC&G BRASS DISK SET IN GRANITE BLOCK STAMPED "1919/38" NAVD 88 ELEVATION = 68.95'



DH DeLUCA-HOFFMAN ASSOCIATES, INC.
778 MAIN STREET, SUITE 8
SOUTH PORTLAND, ME 04106
207.775.1121
WWW.DELUCAHOFFMAN.COM

Prepared For: 119 DEVELOPMENT LLC C/O DEVELOPERS COLLABORATIVE LLC 17 CHESTNUT STREET PORTLAND, ME 04101	Project: HOTEL REDEVELOPMENT PORTLAND, ME	Revisions:
	119 EXCHANGE STREET PORTLAND, MAINE	12/28/12 Final Plan Submission
Architect: ARCHETYPE architects 48 Union Wharf Portland, Maine 04101 (207) 772-6022 Fax (207) 772-4056	Date: SEPT. 2012	10/29/12 Schematic Sidewalk Layout for Review 09/18/12 Preliminary Site Plan Application
	Scale: 1" = 10'	
	EXISTING CONDITIONS PLAN	
	C-2.1	