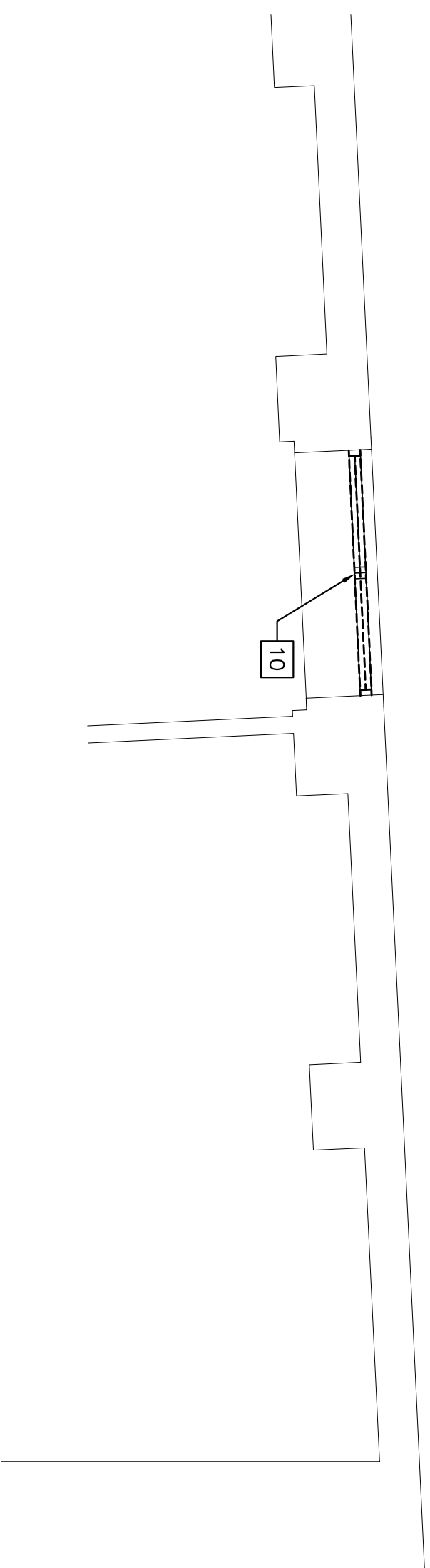
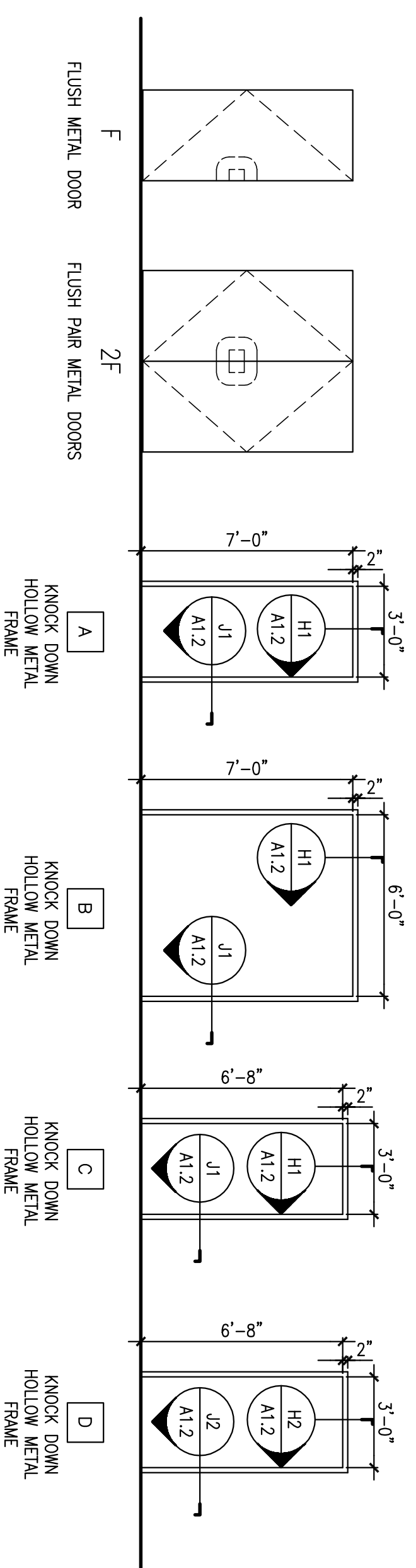


REMOVALS NOTES:

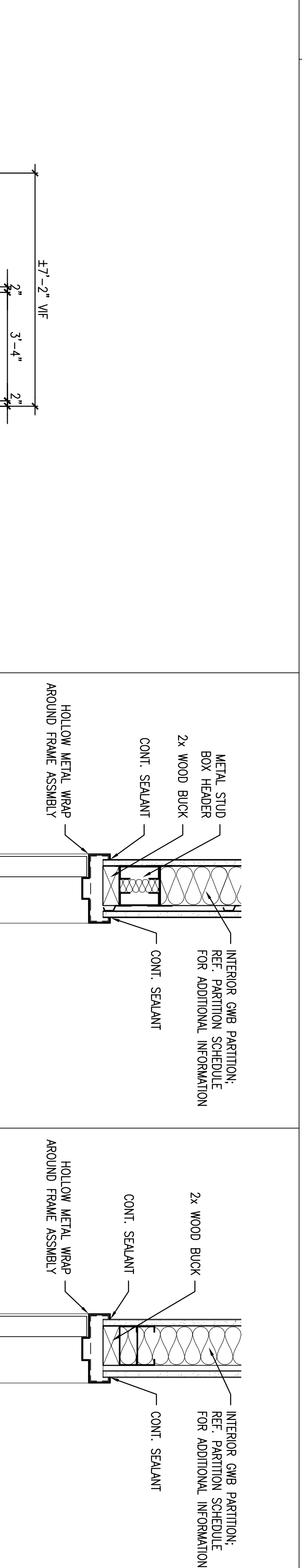
- 1 EXISTING PANEL WALL AND DOOR ASSEMBLY TO BE REMOVED BY OWNER.
- 2 EXISTING TERRA COTTA WALL ASSEMBLY TO BE REMOVED BY OWNER.
- 3 EXISTING LOCKERS TO BE REMOVED BY OWNER.
- 4 REMOVE PORTION OF EXISTING TERRA COTTA BLOCK WALL ASSEMBLY TO EXTENTS REQUIRED FOR NEW DOOR ASSEMBLY, PATCH AND REPAIR ADJACENT SURFACES TO REMAIN AS REQUIRED.
- 5 EXISTING SHOWER UNITS TO BE REMOVED BY OWNER.
- 6 EXISTING 3-BAY SINK UNIT TO BE REMOVED BY OWNER.
- 7 REMOVE EXISTING DOOR AND FRAME ASSEMBLY COMPLETE PREPARE OPENING AS REQUIRED FOR NEW DOOR AND FRAME INSTALLATION AS REQUIRED. ENLARGE OPENING WITHIN WALL ASSEMBLY AS REQUIRED.
- 8 REMOVE PORTION OF EXISTING WALL ASSEMBLY AS REQUIRED FOR DUCT PENETRATION. COORDINATE SIZE OF OPENING WITH DUCTWORK SIZES. UPON COMPLETION OF DUCT INSTALLATIONS, THE FIRE RATED PENETRATION SHALL BE REINSTALLED IN SUCH A FASHION AS TO MAINTAIN THE FIRE RATING OF THE WALL ASSEMBLY PENETRATED. THE FIRE RATING OF THE PENETRATION SHALL EQUAL THE FIRE RATING OF THE FLOOR BEING PENETRATED.
- 9 REMOVE A PORTION OF CONCRETE BASEMENT CEILING DECK / FIRST FLOOR FLOOR DECK AS REQUIRED FOR DUCT PENETRATION. UPON COMPLETION OF DUCT INSTALLATIONS, THE FIRE RATED PENETRATION SHALL BE REINSTALLED IN SUCH A FASHION AS TO MAINTAIN THE FIRE RATING OF THE FLOOR/CEILING ASSEMBLY PENETRATED. THE FIRE RATING OF THE FLOOR/CEILING SHALL EQUAL THE FIRE RATING OF THE FLOOR/CEILING BEING PENETRATED.
- 10 REMOVE EXISTING HOLLOW METAL FRAME WINDOW COMPLETE.



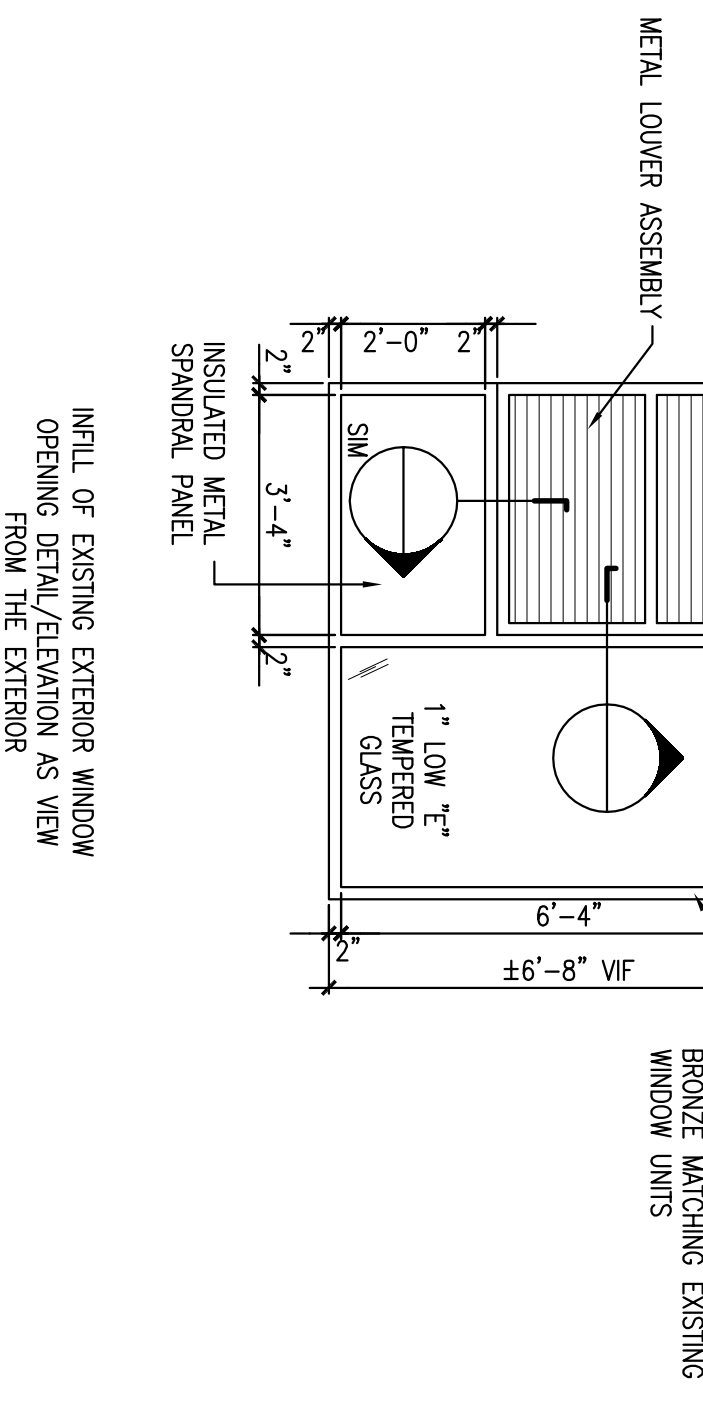
A REMOVALS PLAN - FIRST FLOOR SCALE: 1/4" = 1'-0"



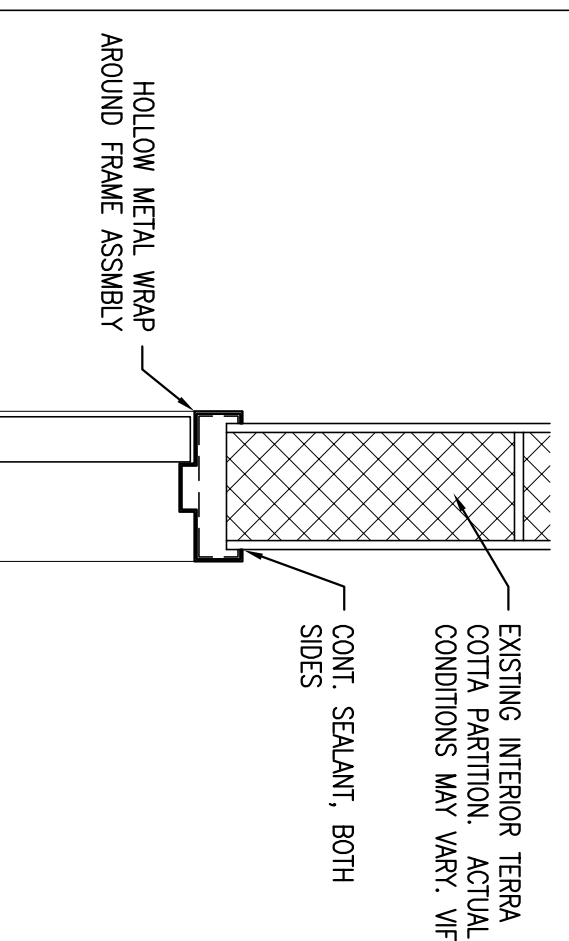
2 DOOR AND DOOR FRAME ELEVATIONS



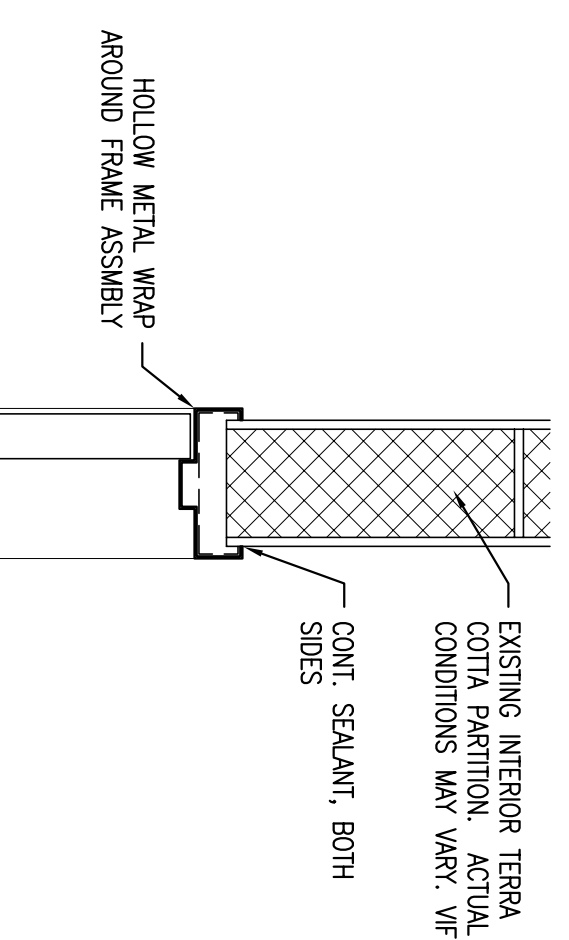
5 ELEVATION @ EXTERIOR WINDOW INFILL



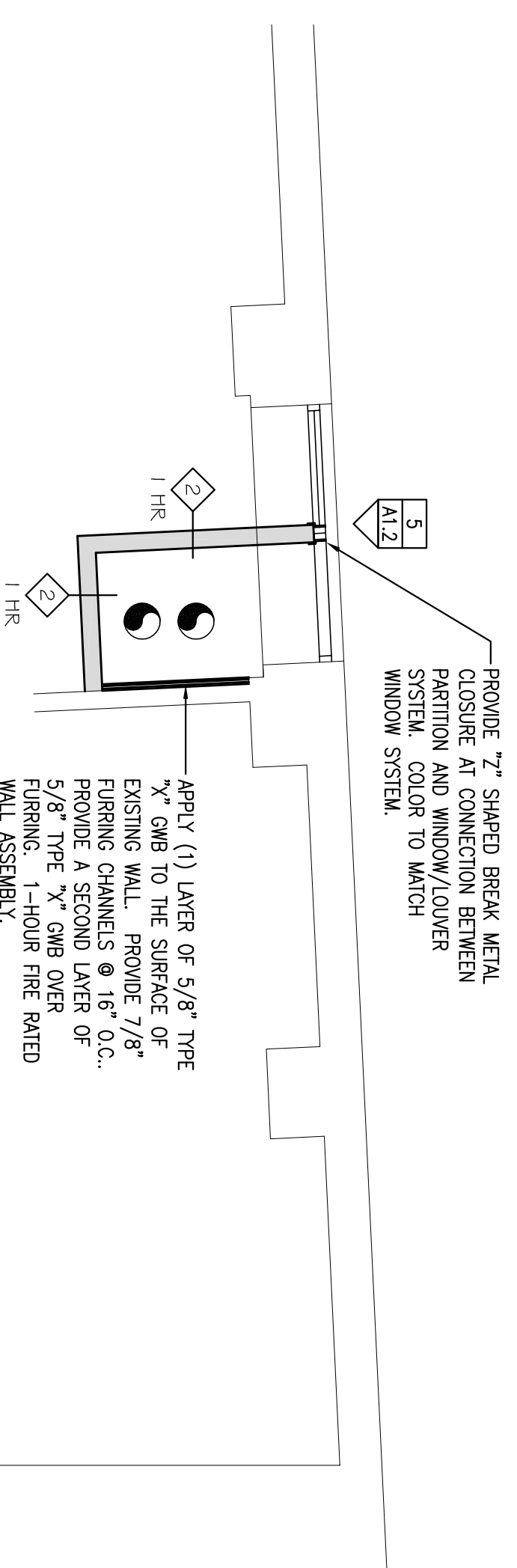
H2 TYP. HEAD DETAIL SCALE: 1/2" = 1'-0"



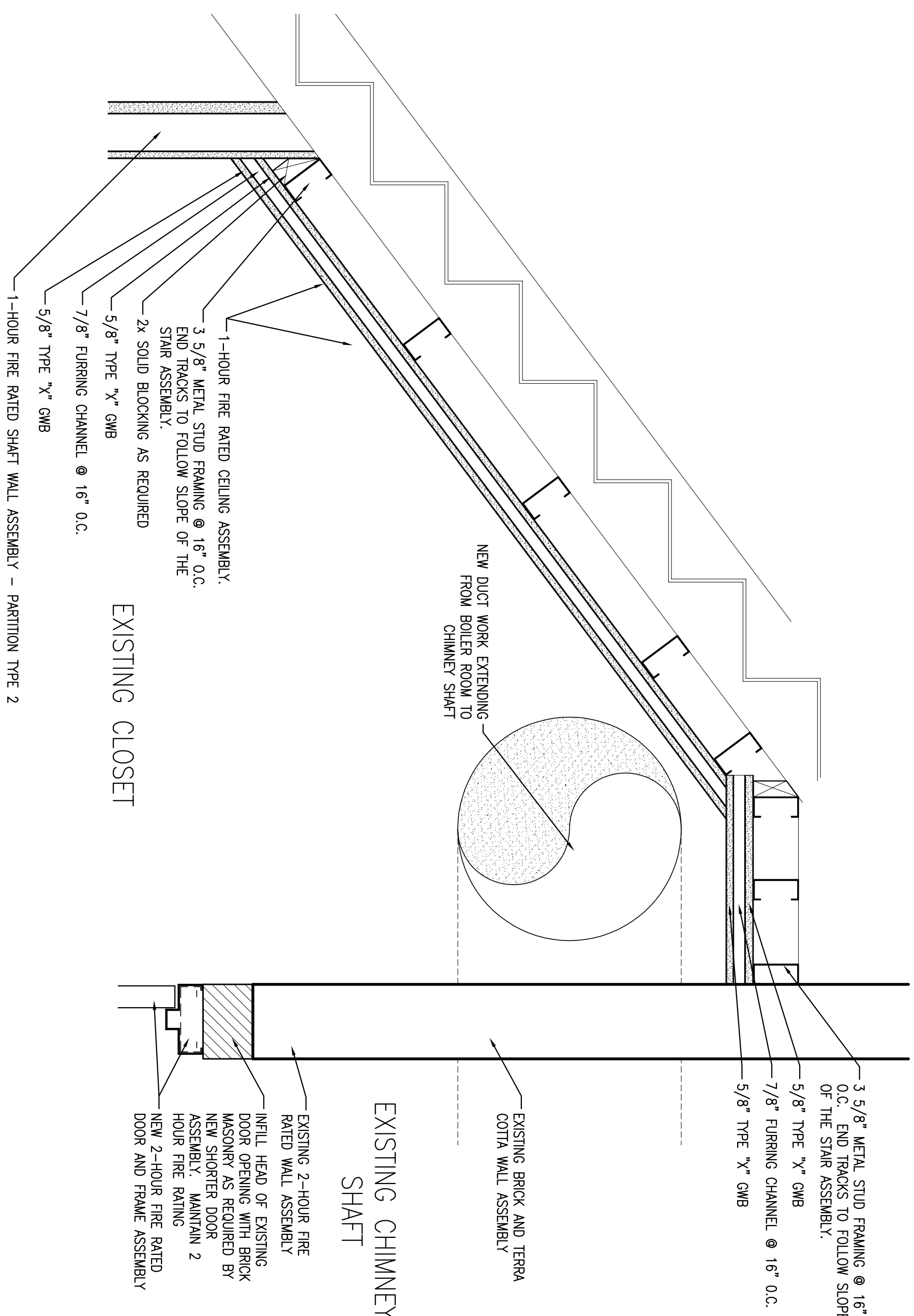
J2 TYP. JAMB DETAIL SCALE: 1/2" = 1'-0"



B NEW WORK PLAN - FIRST FLOOR SCALE: 1/4" = 1'-0"



7 DETAIL @ FIRE RATED CEILING SCALE: 1/2" = 1'-0"



CWS Architects

454 Cumberland Avenue
Portland, ME 04101
Phone: (207) 774-4441
Fax: (207) 774-4016
www.CWSarch.com

BOILER REPLACEMENT RENOVATIONS
390 CONGRESS STREET
PORTLAND, MAINE
04104

BLETHEN MAINE PAPERS
390 CONGRESS STREET
PO BOX 1460
PORTLAND, MAINE
04037
(207) 828-8123

REVISIONS:

Description	Date

Drawing Title:
PARTIAL FIRST FLOOR REMOVALS & NEW WORK PLANS, DETAILS
Scale: 1/4" = 1'-0"
Date: Progress 11/14/05
CWS Proj. No.: 054356.BLR

Drawing Number:
A12