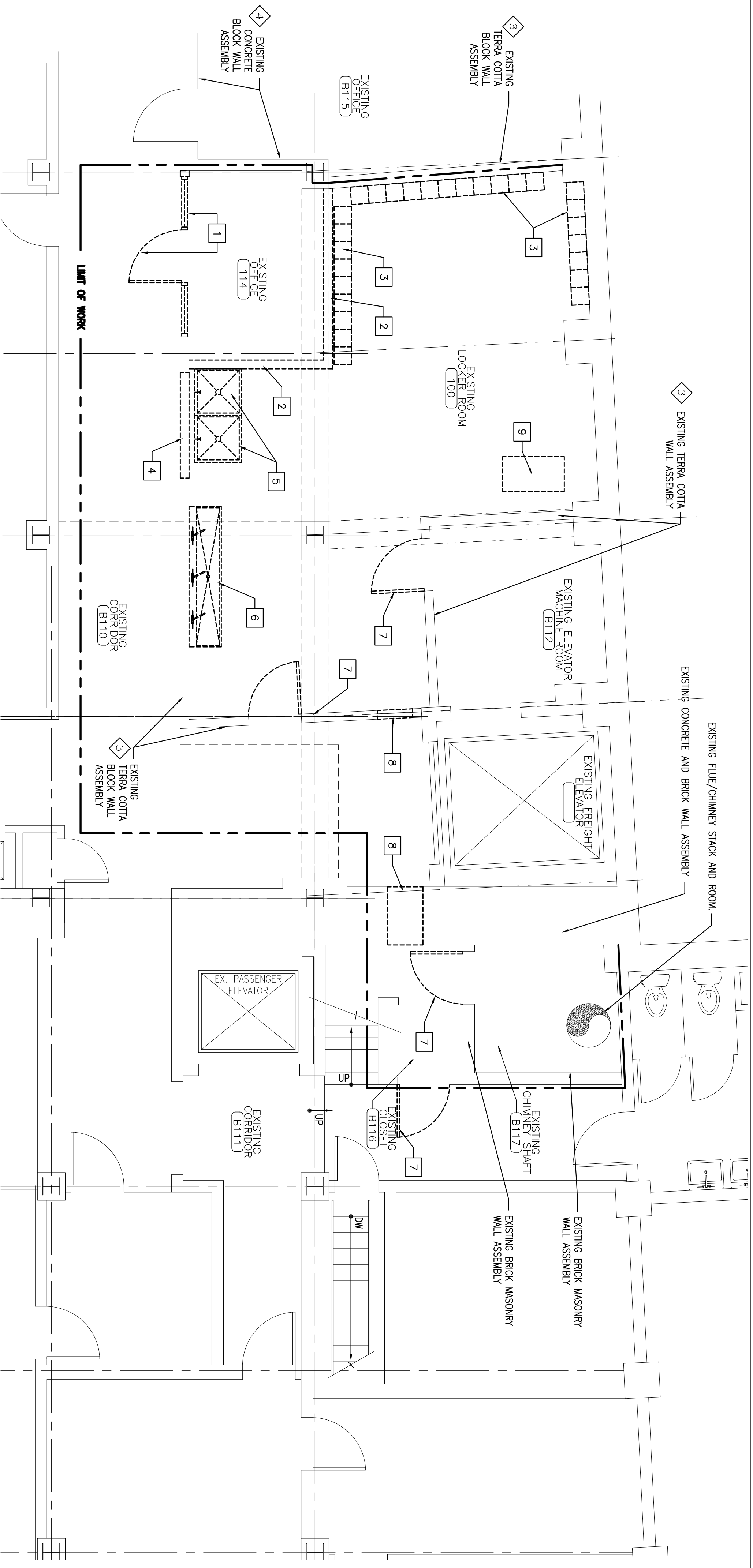


**GENERAL REMOVALS NOTES:**

1. THE CONTRACTOR SHALL PATCH AND REPAIR ALL WALL ASSEMBLIES WITHIN THE LIMITS OF WORK THAT BECOME DAMAGED DURING THE GENERAL CONSTRUCTION PROCESS.
2. THE INTENT OF THE DRAWINGS IS TO CREATE A 1-HOUR FIRE RATED ENCLOSURE AROUND THE NEW BOILER ROOM AND TO ISOLATE THE AREA BENEATH THE STAIR WITH A 1-HOUR FIRE RATED ENCLOSURE. ALL WALL ASSEMBLIES SHALL BE FIRE RATED THROUGHOUT. THESE ASSEMBLIES SHALL BE FIRE SEALED. THE FIRE RATING OF THE SEAL SHALL BE EQUAL TO THE FIRE RATING OF THE WALL BEING PENETRATED. THE 1-HOUR ENCLOSURE INCLUDES ALL PERIMETER WALLS AS WELL AS THE CONCRETE FLOOR AND CEILING DECKS.
3. THE WALL ASSEMBLIES SURROUNDING THE EXISTING CHIMNEY SHIRT ARE 2-HOUR FIRE RATED WALL ASSEMBLIES. THESE WALL ASSEMBLIES SHALL MAINTAIN THIS RATING AND SHALL BE EQUAL TO THE RATING OF THE WALL ASSEMBLY PENETRATED.

**REMOVALS NOTES:**

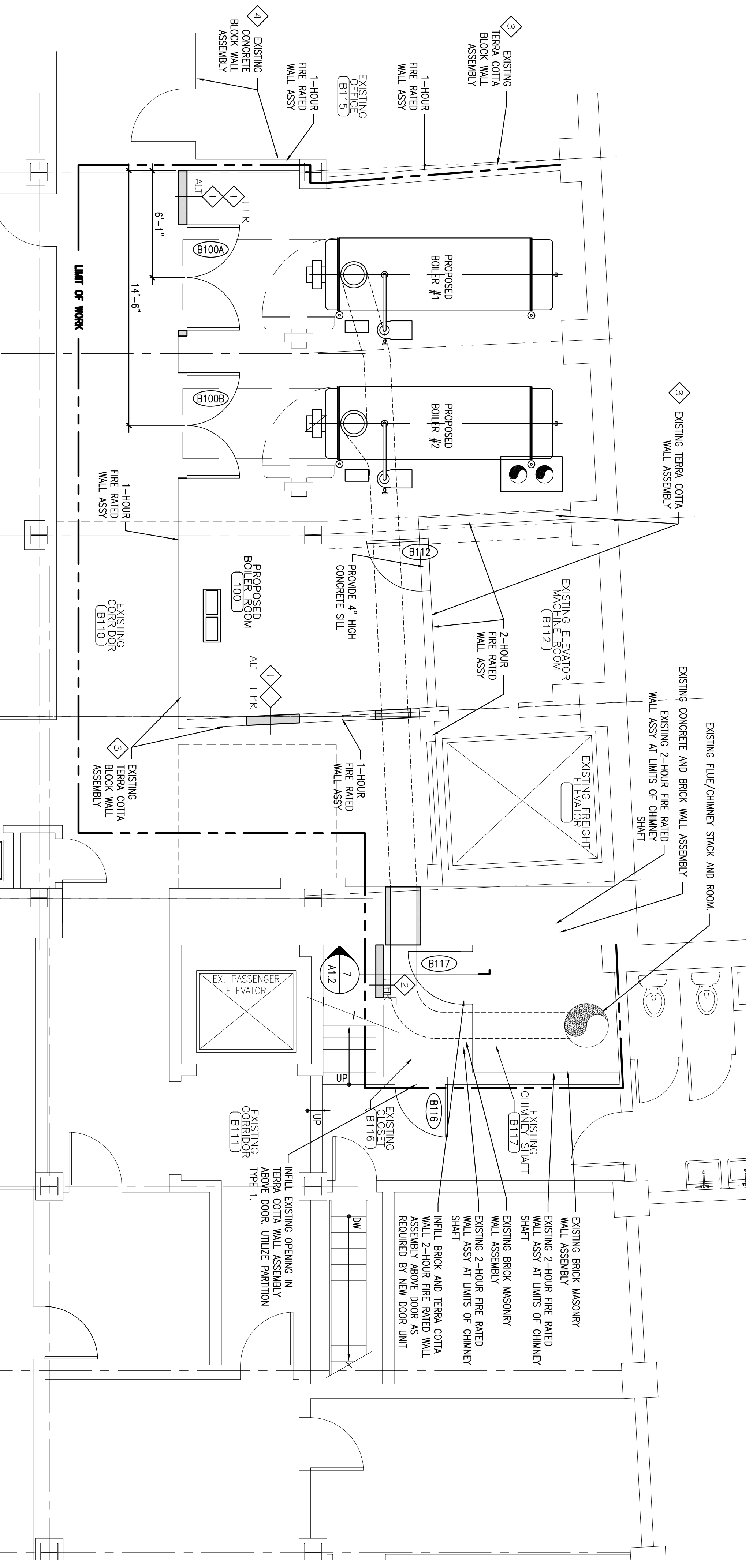
1. EXISTING PANEL WALL AND DOOR ASSEMBLY TO BE REMOVED BY OWNER.
2. EXISTING TERRA COTTA WALL ASSEMBLY TO BE REMOVED BY OWNER.
3. EXISTING LOCKERS TO BE REMOVED BY OWNER.
4. REMOVE PORTION OF EXISTING TERRA COTTA BLOCK WALL ASSEMBLY TO EXTENTS REQUIRED FOR NEW DOOR ASSEMBLY, PATCH AND REPAIR ADJACENT SURFACES TO REMAIN AS REQUIRED.
5. EXISTING SHOWER UNITS TO BE REMOVED BY OWNER.
6. EXISTING 3-BAY SINK UNIT TO BE REMOVED BY OWNER.
7. REMOVE EXISTING DOOR AND FRAME ASSEMBLY COMPLETE PREPARE OPENING AS REQUIRED. ENLARGE OPENING WITHIN WALL ASSEMBLY AS REQUIRED.
8. REMOVE PORTION OF EXISTING WALL ASSEMBLY AS REQUIRED FOR DUCT PENETRATION. COORDINATE SIZE OF OPENING WITH DUCT WORK SIZES. REMOVE PORTION OF DUCT INSTALLATIONS, PENETRATION SHALL BE MADE IN SUCH A FASHION AS TO MAINTAIN THE FIRE RATING OF THE WALL ASSEMBLY PENETRATED. THE FIRE RATING OF THE PENETRATION SHALL EQUAL THE FIRE RATING OF THE FLOOR/CEILING BEING PENETRATED.
9. REMOVE A PORTION OF CONCRETE BASEMENT CEILING DECK / FIRST FLOOR FLOOR DECK AS REQUIRED FOR DUCT PENETRATION. UPON COMPLETION OF DUCT INSTALLATIONS, THE FIRE RATED PENETRATION SHALL BE MADE IN SUCH A FASHION AS TO MAINTAIN THE FIRE RATING OF THE FLOOR/CEILING ASSEMBLY PENETRATED. THE FIRE RATING OF THE PENETRATION SHALL EQUAL THE FIRE RATING OF THE FLOOR/CEILING BEING PENETRATED.
10. REMOVE EXISTING HOLLOW METAL FRAME WINDOW COMPLETE.



**A REMOVALS PLAN**

REFERENCED FROM:

SCALE: 1/4" = 1'-0"



**B NEW WORK FLOOR PLAN**

REFERENCED FROM:

SCALE: 1/4" = 1'-0"



**CWS Architects**  
 454 Cumberland Avenue  
 Portland, ME 04101  
 Phone: (207) 774-4441  
 Fax: (207) 774-4016  
 www.CWSarch.com

**BOILER REPLACEMENT RENOVATIONS**  
 390 CONGRESS STREET  
 PORTLAND, MAINE  
 04104

**BLETHEN MAINE PAPERS**  
 390 CONGRESS STREET  
 PO BOX 1460  
 PORTLAND, MAINE  
 04037  
 (207) 828-8123

REVISIONS:	
Description:	Date:

**REMOVALS AND NEW WORK PLANS**  
 Drawing Title:  
 Scale: 1/4" = 1'-0"  
 Date: Progress II/14/05  
 CWS Proj. No.: 05435.BLR

**A1.1**  
 Drawing Number:  
 ISSUED FOR PERMITTING