

GAYLORD AUTOSTART NOTES

- A) TEMPERATURE SENSING THERMOSTATS (TST) INSTALLED IN HOOD
- B) "TST" - PRESET TO 90°F AT FACTORY
- C) IN SOME CLIMATES AND/OR CONDITIONS, IT MAY BE NECESSARY TO ADJUST THE "TST" TEMPERATURE SETTING IN THE FIELD BY OTHERS
- D) DRY CONTACTS EF1 & EF2, MAY BE WIRED TO 24V TO 220VAC CONTACTS

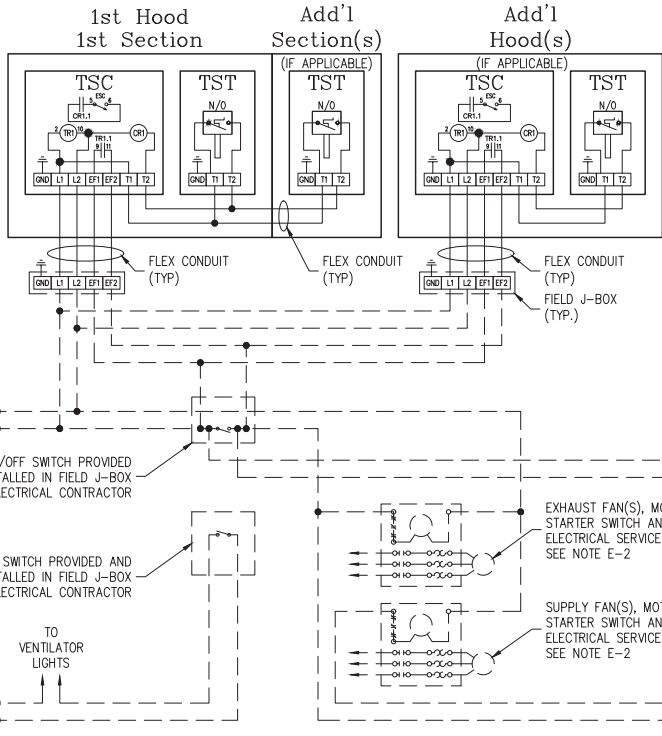
WIRING NOTES

- E-1) ALL EXTERNAL CONTROL WIRING SHALL BE 12 GAUGE MINIMUM OR AS PER APPLICABLE CODES.
- E-2) THE HOLDING COILS WITHIN THE MAGNETIC STARTERS MUST MATCH THE SUPPLY VOLTAGE. MAGNETIC STARTERS ARE SUPPLIED BY OTHERS.

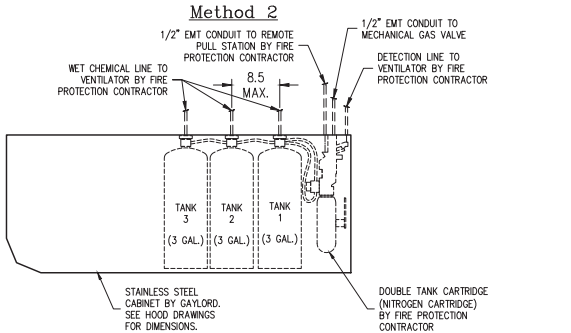
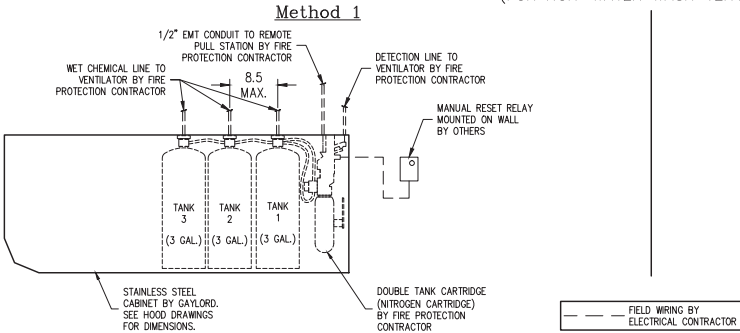
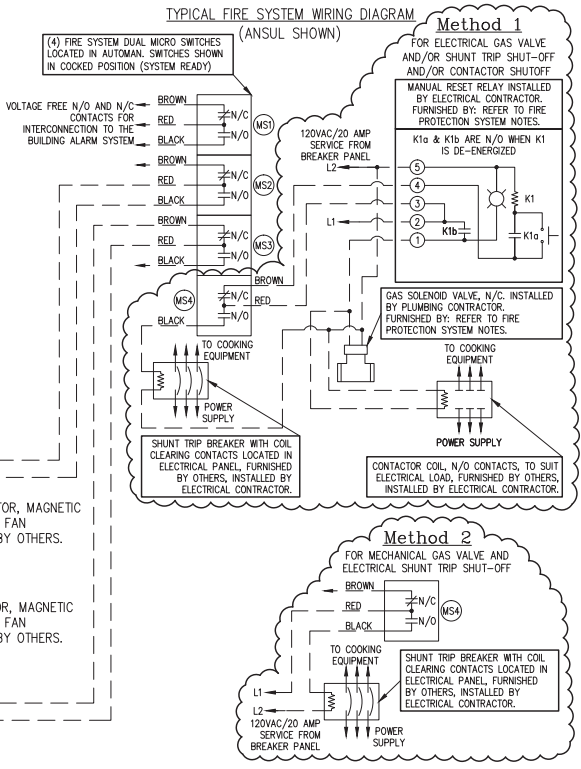
--- FIELD WIRING BY OTHERS
 — WIRING BY GAYLORD

WHEN USING MULTIPLE LIGHT SWITCHES ON ONE CIRCUIT, VERIFY THAT THE LOAD DOES NOT EXCEED 15 AMPS (MAX.) IF IT DOES, USE MULTIPLE CIRCUITS.

SUPPLY VOLTAGE
 [x] 120V
 [] 220V
 [] 50Hz
 [x] 60Hz



TYPICAL ANSUL TANK SCHEMATIC (FOR NON-WATER WASH VENTILATOR)



| INSTALLATION INFORMATION | | | | |
|--------------------------|----------|----------|------------------------------------|------------|
| REV | DRAWN BY | DATE | REVISIONS | CHECKED BY |
| 02 | AH | 10-22-14 | REVISED TO 24" HIGH HOODS | |
| 01 | RS | 10-09-14 | REVISED TO FULL SUBMITTAL DRAWINGS | |

This plan is made from available information, but measurements in a clear and concise manner. Gaylord Industries will not be responsible for any incidental or consequential damages incurred by others as a result of contractors, installers and others failure to notify Gaylord of changes to the plan.

ATTENTION - This plan is the property of Gaylord Industries and is confidential and proprietary. It is not to be copied, reproduced, or distributed, in whole or part, nor be used in anyway detrimental to Gaylord Industries. If you have received this plan without Gaylord's permission, please (1) do not read it, (2) reply to the sender that you received the drawing in error, and (3) erase and/or destroy the drawing.

GAYLORD® INDUSTRIES

10800 S.W. AVERY ST.
 TUALATIN, OR 97062

TELEPHONE: (503) 691-2010
 TOLL FREE: (800) 547-9696
 FAX NO.: (503) 692-6048
 E-MAIL: gaylord@gaylordusa.com

| | | |
|-------------------------------------|---------------------------|---------------------------|
| ANSUL R-102-ASEFC-3T-19N-24F | FP-1 | 13230903 |
| ELX-BB-MP-AS-120 (T1) | 18 | 13230901 |
| DRAWN BY: SH | CHECKED BY: ELECT. DESIG. | F.A. CHECK: SE. APPROVAL: |
| PRESS HOTEL PORTLAND, ME | | |
| DRAWING NO: 13-2200B | DATE: 02-27-13 | REV: 02 SHEET NO: 04 |

