

CPVC CURING TIMES

FOR TFP-400, TFP-500  
WICHAUL #899 & SPEARS FS-5  
200 PSI (MAXIMUM) TEST PRESSURE

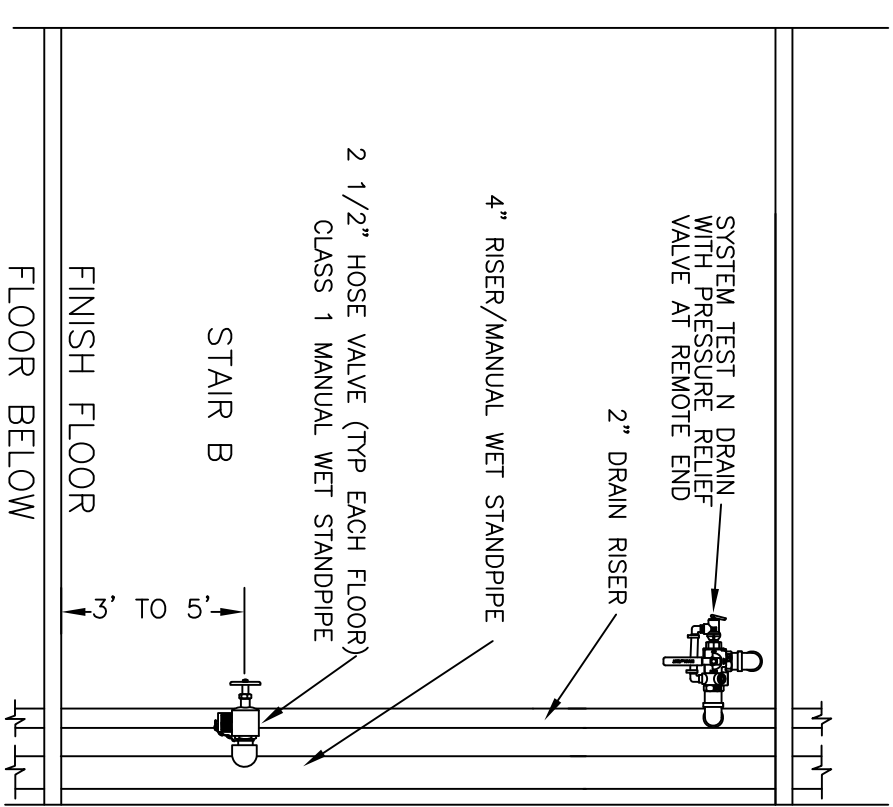
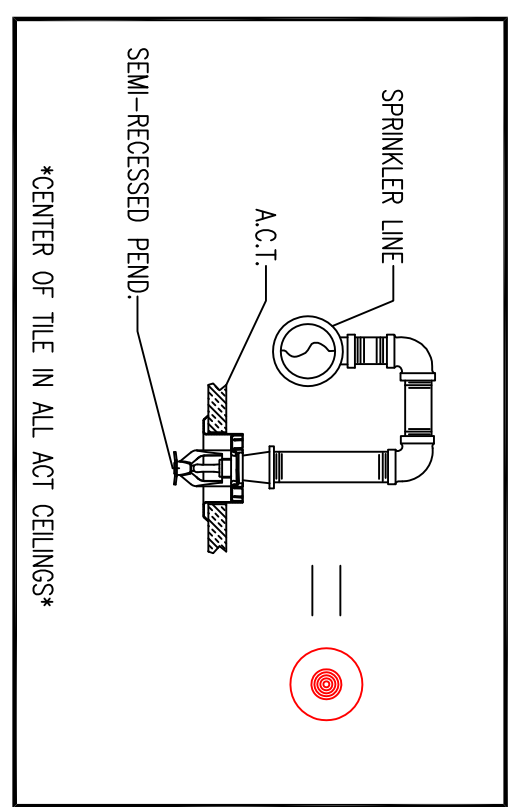
PIPE SIZE (INCHES)	100% TO AMBIENT TEMPERATURE DURING CURE PERIOD	TEST PERIOD
1/2"	40 MIN	90 TO 39*
3/4"	45 MIN	115 HR
1"	1.5 HR	24 HR
1-1/4"	1.5 HR	120 HR
1-1/2"	1.5 HR	16 HR
2"	6 HR	36 HR
2-1/2"	8 HR	72 HR

NOTE: \*FOR THESE SIZES, THE SOLVENT CEMENT CAN BE APPLIED AT TEMPERATURES BELOW 32°F HOWEVER, THE SPRINKLER SYSTEM PIPING AND CEILING TO BE CURED PER THE ABOVE RECOMMENDATIONS PRIOR TO PRESSURE TESTING.

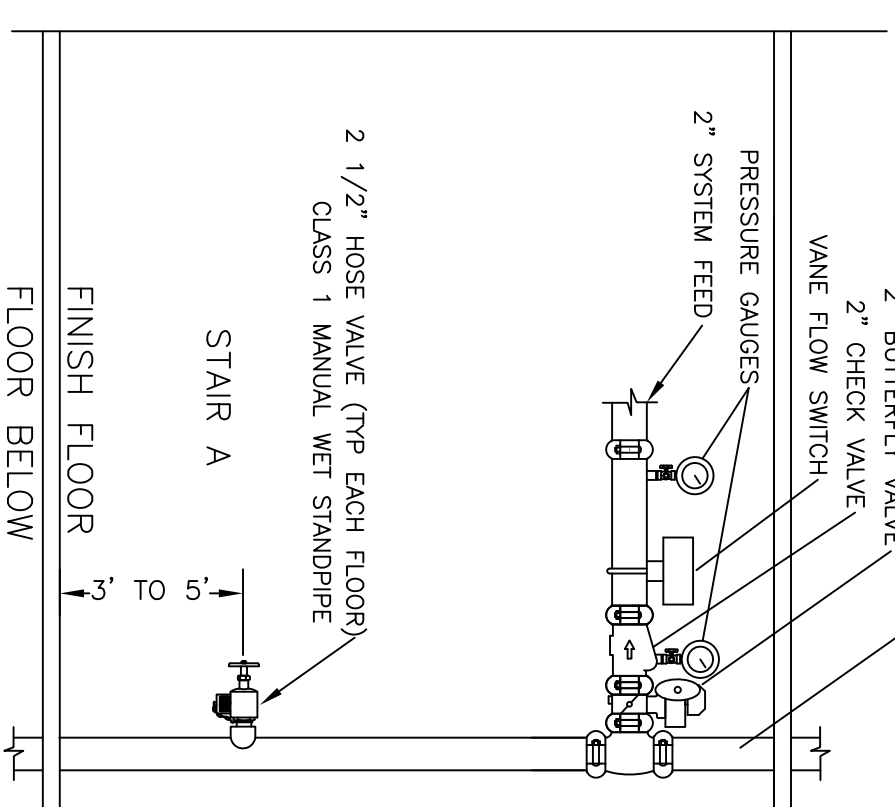
CPVC HANGING NOTES

CPVC MAXIMUM SUPPORT SPACING (FT)

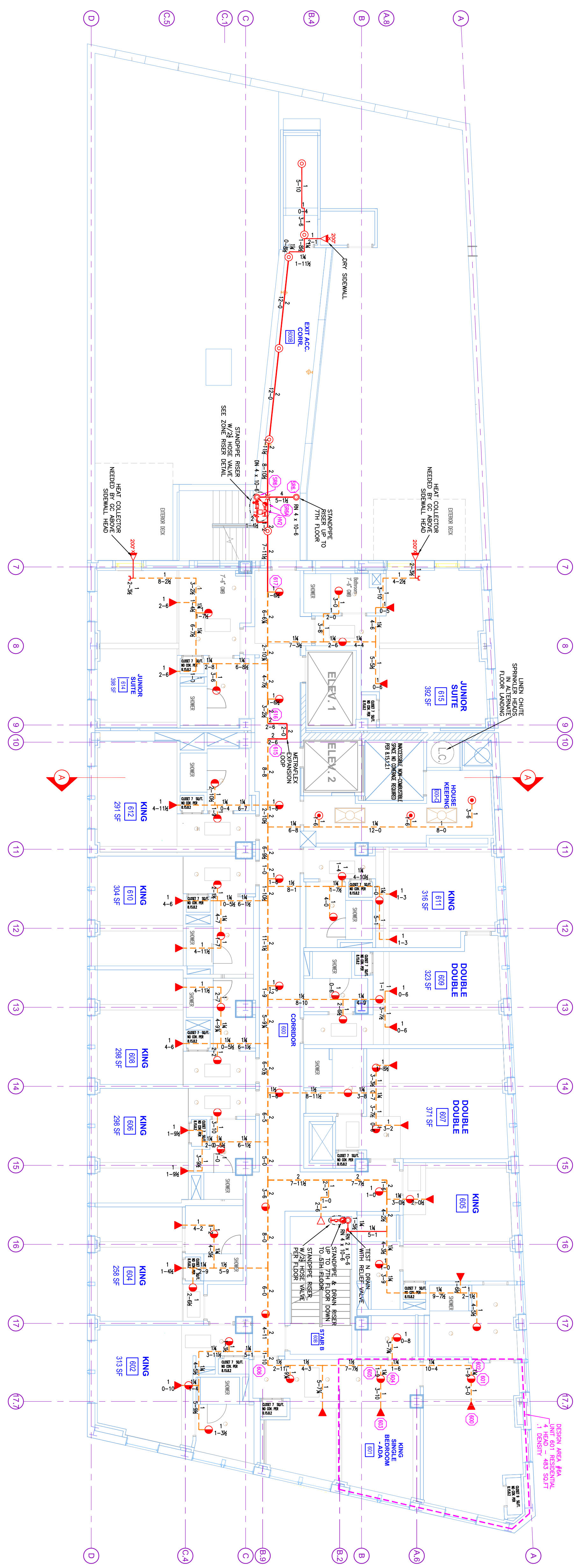
PIPE SIZE	3/4"	1"	1-1/2"	2"	2-1/2"	3"
NOMINAL PIPE SIZE	6'	8'	10'	12'	14'	16'



HD HOSE VALVE DETAIL  
SCALE: N.T.S.



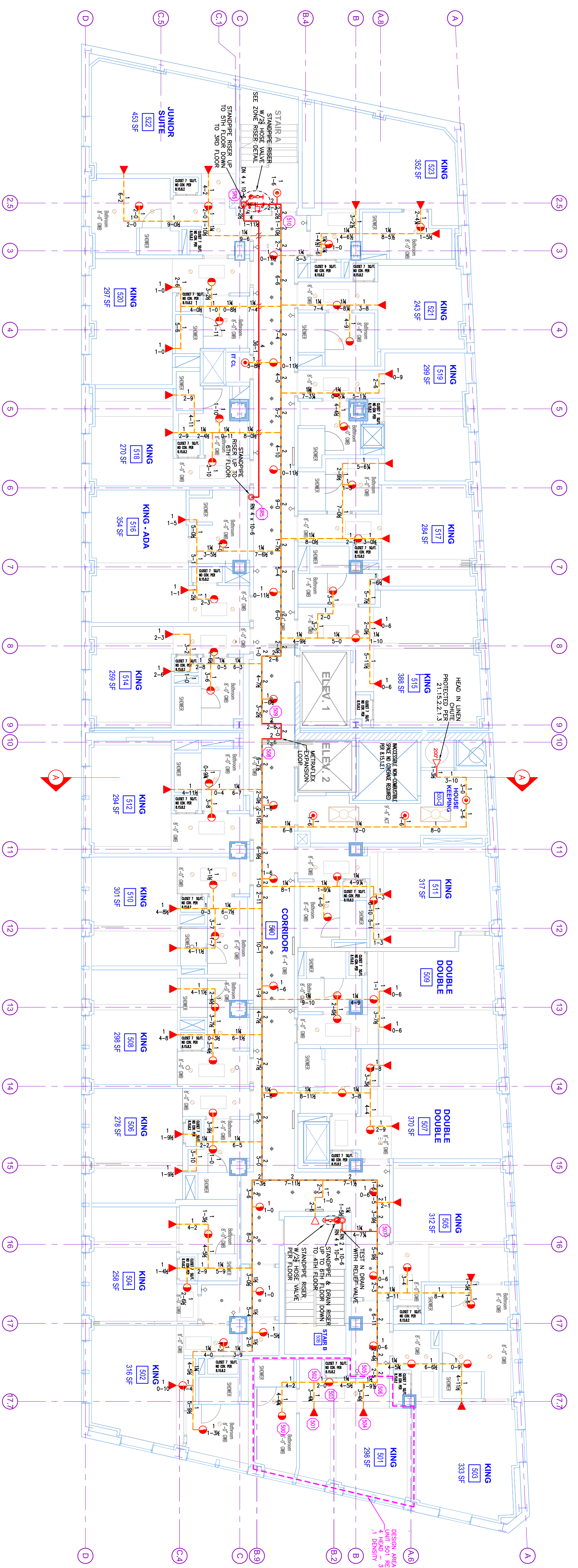
ZD ZONE RISER DETAIL  
SCALE: N.T.S.



\*DESIGN AREA NUMBER 6A\*  
HYDRAULIC DESIGN CRITERIA  
LOADING: 400 SQ. FT. 1.5 WET  
AREA OF OPERATION: 443-501 FT.  
DESIGN: 1.5 WET DESIGN OF 100 GPM  
HEAD SPRINKLER: 224 SQ. FT. 17' X 14'  
SYSTEM STAND INCLUDING HOSE: 6  
SAFETY MARGIN: 8-9%

4.1 SIXTH FLOOR (ZONE 6)  
TOTAL PROTECTED AREA 6,900 SQ.FT.  
SCALE 1/8" = 1'-0"

\*DESIGN AREA NUMBER 5A\*  
HYDRAULIC DESIGN CRITERIA  
LOADING: 400 SQ. FT. 1.5 WET  
AREA OF OPERATION: 444-501 FT.  
DESIGN: 1.5 WET DESIGN OF 100 GPM  
HEAD SPRINKLER: 224 SQ. FT. 17' X 14'  
SYSTEM STAND INCLUDING HOSE: 6  
SAFETY MARGIN: 8-9%



4 FIFTH FLOOR (ZONE 5)  
TOTAL PROTECTED AREA 9,200 SQ.FT.  
SCALE 1/8" = 1'-0"

