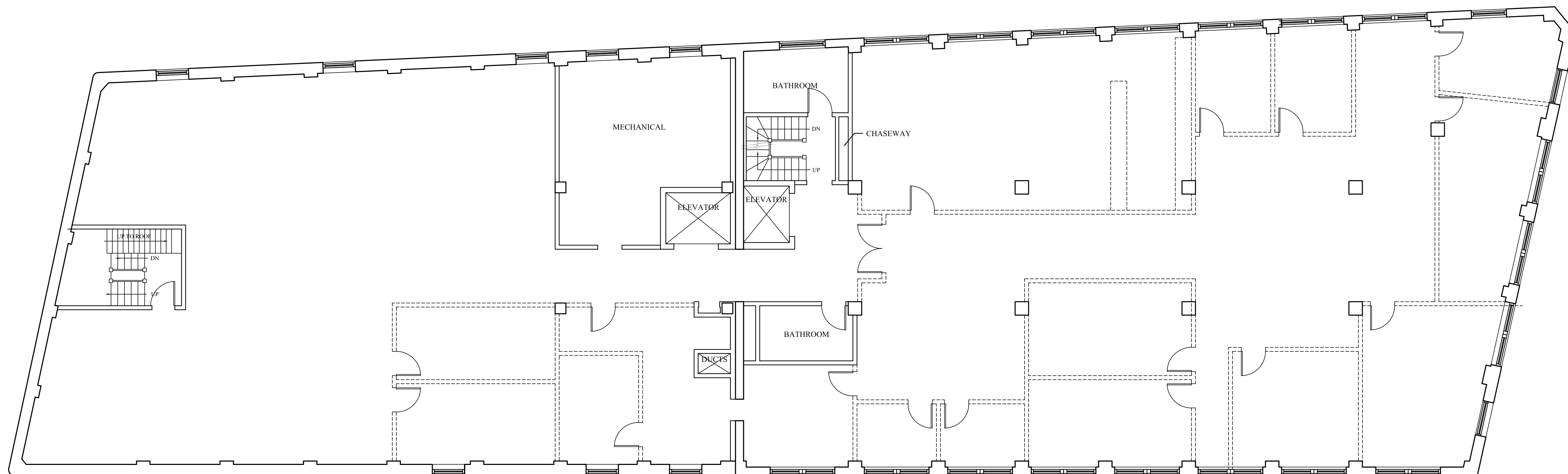


6 | SIXTH FLOOR PLAN (9,840 sqft)  
SCALE: 1/8"=1'-0"



5 | FIFTH FLOOR PLAN (9,840 sqft)  
SCALE: 1/8"=1'-0"

**General Note:**

- Verify in field location and layout of interior walls.
- Remove all non-structural interior partitions.
- Stairs, Elevators and Mechanical Rooms to remain.
- Remove all hung ceilings.
- Remove carpeting.
- Bathrooms and plumbing fixtures to be demo'd. All piping to be removed and capped at lower level.
- Electrical demo'd back to panel boxes.
- Piping and equipment from previous heating system to be removed.
- Consult owner before demoing any decorative walls/floors/ceilings.

Project:		PRESS HERALD OFFICE BUILDING	
		390 CONGRESS STREET PORTLAND, MAINE	
Revisions:			
Scale:		1/8" = 1'-0"	
Date:		24 June 2010	
		FIFTH FLOOR AND SIXTH FLOOR DEMO	
		A4	