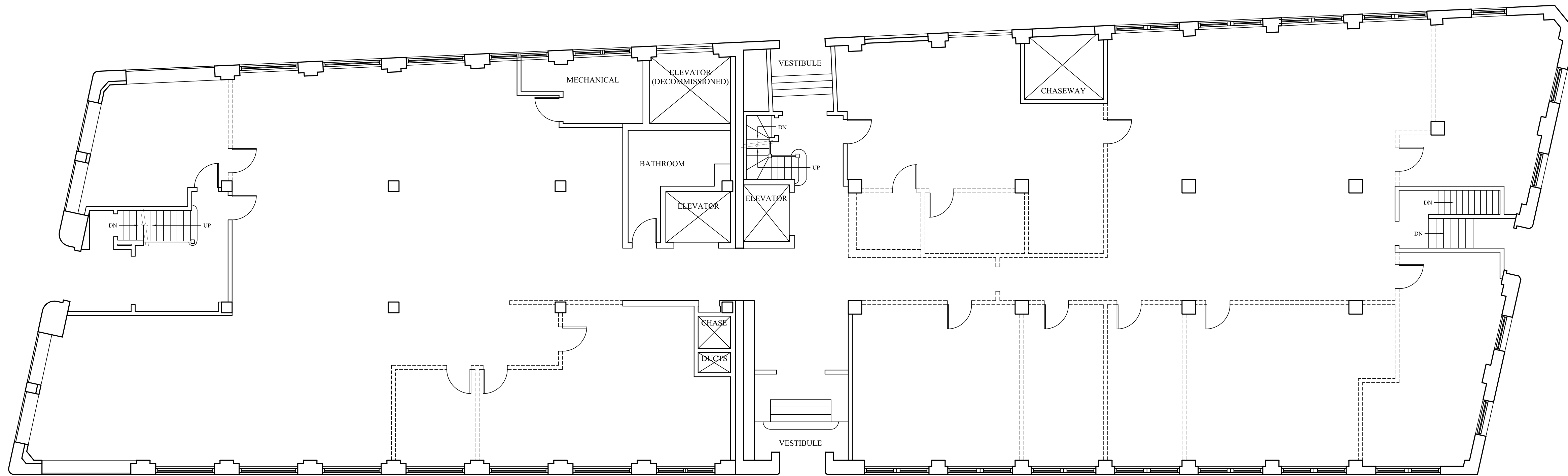


2 | SECOND FLOOR PLAN (9,840 sqft)  
SCALE: 1/8"=1'-0"



1 | FIRST FLOOR PLAN (9,840 sqft)  
SCALE: 1/8"=1'-0"

- General Note:**
- Verify in field location and layout of interior walls.
  - Remove all non-structural interior partitions.
  - Stairs, Elevators and Mechanical Rooms to remain.
  - Remove all hung ceilings.
  - Remove carpeting.
  - Bathrooms and plumbing fixtures to be demo'd. All piping to be removed and capped at lower level.
  - Electrical demo'd back to panel boxes.
  - Piping and equipment from previous heating system to be removed.
  - Consult owner before demoing any decorative walls/floors/ceilings.

Project:		PRESS HERALD OFFICE BUILDING	
		390 CONGRESS STREET PORTLAND, MAINE	
Revisions:			
Date:	24 June 2010	Scale:	1/8" = 1'-0"
		FIRST FLOOR AND SECOND FLOOR DEMO	
		A2	